




MATERIAL LEGEND

-  SPLIT FACE CMU
-  PAINTED CONCRETE TILT-WALL
-  ALUMINUM & GLASS STOREFRONT
-  PAINTED METAL
-  BRICK VENEER

SAMPLE MATERIAL CALCULATIONS										
Elevation	Total Area	Glass/Opening Area	OS% ¹	Concrete Tilt Wall Area	T.W. %	Split Face CMU Area	CMU %	Brick Veneer Area	B.V. %	Total Masonry Percentage
NORTH	1,383 sqft	76 sqft	5.0%	881 sqft	67.4%	374 sqft	28.6%	41 sqft	3.0%	99.2%
SOUTH	1,383 sqft	76 sqft	5.0%	881 sqft	67.4%	374 sqft	28.6%	41 sqft	3.0%	99.2%
WEST	7,719 sqft	1,099 sqft	14.2%	2,599 sqft	38.7%	2,299 sqft	34.7%	1,635 sqft	24.7%	98.1%
EAST	6,450 sqft	1,785 sqft	27.7%	4,565 sqft	100%	-	-	-	-	100%
OVERALL MASONRY + GLASS AREAS = 98.6%										

Note: Masonry percentages are calculated based on the total area of the associated facade minus glass.

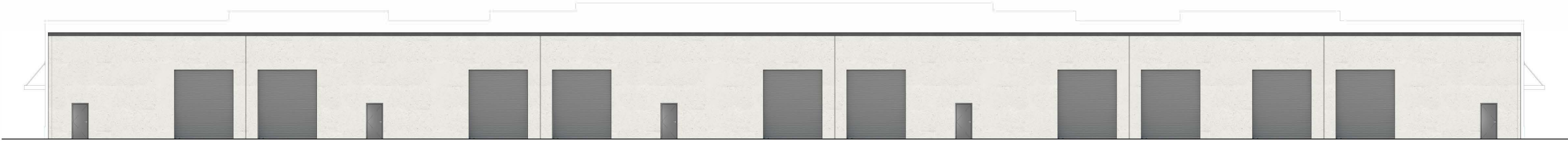
Note: All facades to be finished with similar architectural elements and materials including minimum 75% masonry.

Permitted elevations will include masonry/tilt-wall mix to meet and exceed UDC masonry requirements. Buildings will feature textured surfaces/architectural elements to enhance wall surfaces.

Similar architectural elements, materials, and colors will be carried through each building on the sites. The elevations presented in this exhibit are representative of a consistent design style that will carry through each building on both sites.



ENLARGED ELEVATION - NORTH / SOUTH - BUILDING 1
Scale: 1" = 10'-0"



ENLARGED ELEVATION - EAST - BUILDING 1
Scale: 1" = 20'-0"



ENLARGED ELEVATION - WEST - BUILDING 1
Scale: 1" = 20'-0"



CHISOLM TRAIL STREET ELEVATION - BUILDINGS 1 & 2
Scale: 1" = 50'-0"