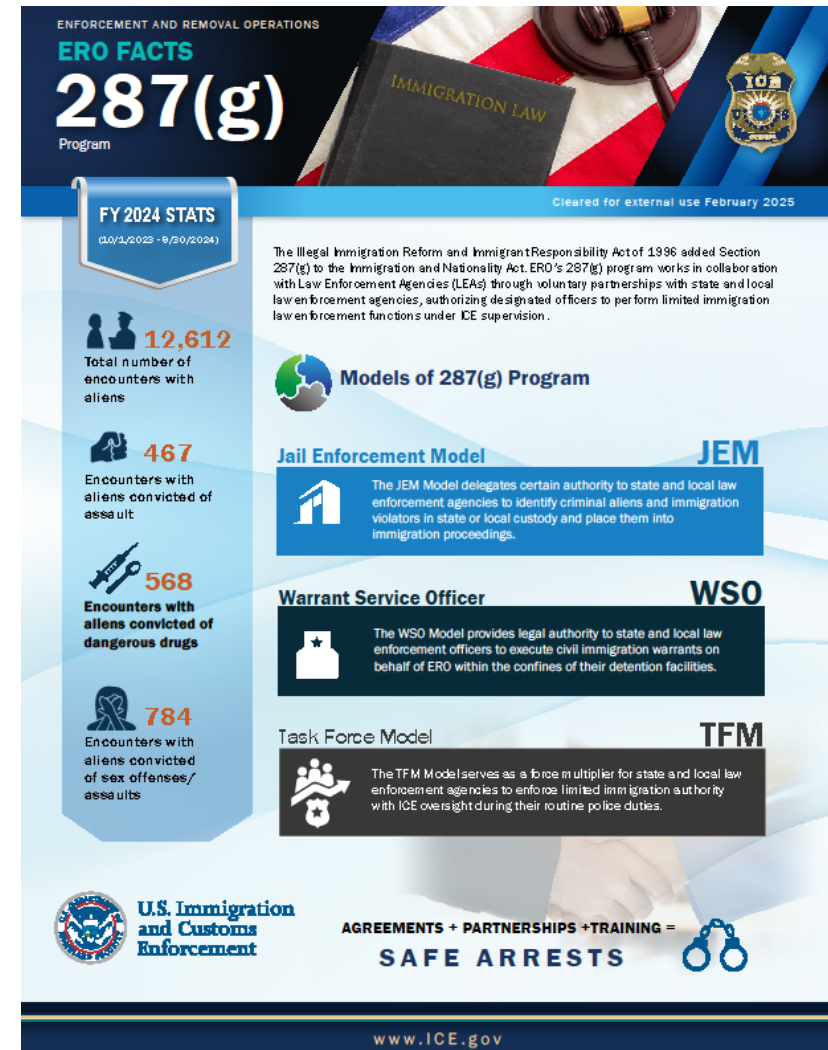


Item H-1

Consider a resolution authorizing the City of Keller's participation in the U.S. Immigration and Customs Enforcement 287(g) Warrant Service Officer Model Program and authorizing the City Manager to execute all necessary agreements and documents.

287g Models

- Jail Enforcement Model (JEM)
- Warrant Service Officer (WSO)
- Task Force Model (TFM)



Current Practices

Secure Communities Program – Since 2013

- U.S. initiative aimed at identifying and deporting non-citizens who have been arrested for criminal offenses.
- FBI fingerprint data (AFIS) is shared with ICE, allowing ICE to check for immigration violations.

Interview questions are asked of all arrestees during the booking process

- If the immigration status of an arrestee is in question, the booking officer can contact the ICE Command Center 24/7.
- ICE will then conduct a phone interview and determine if an immigration detainer is warranted.

Recent Statistics – ICE Contacts

2022

- 1,750 persons arrested
- 12 contacts

2023

- 1,772 persons arrested
- 7 contacts

2024

- 2,095 persons arrested
- 13 contacts

2025

- 1,420 persons arrested (YTD)
- 18 contacts



287g Models – Task Force Model

Task Force Model

- Authorizes state and local law enforcement agencies to carry out specific immigration law enforcement duties.
- This includes identifying, processing and arresting individuals suspected of immigration violations during their routine law enforcement activities.

287g Models – Jail Enforcement Model

Jail Enforcement Model: Focuses on immigration enforcement within the confines of a detention center.

- Local law enforcement agencies identify individuals with potential immigration violations who have been arrested for a criminal offense.
- Only offenders brought to the jail are screened for immigration status.
- No immigration enforcement functions are conducted outside the detention center, such as in the community or places of employment.
- Facilitates the initiation of deportation proceedings against identified individuals.

Senate Bill 8 mandates that sheriffs' offices (county-level jails) participate in the 287g program. Tarrant County has participated since 2020.

287g Models – Warrant Service Officer

Warrant Service Model: Empowers local law enforcement agencies to serve and execute administrative warrants on individuals within their custody who are subject to deportation, only within the agency's jails or correctional facilities.

- Designated detention officers are trained, certified and authorized by ICE to execute ICE administrative warrants, not criminal warrants. This training is less extensive than the jail enforcement model.

Does **NOT** provide authority to:

- Make immigration-related arrests on the street or during routine police patrols
- Conduct interrogations regarding an individual's immigration status.

Key Considerations: Warrant Service Officer Model

Personnel & Training

- All detention officers must complete an online or on-site, 8-hour certification course
- Annual recertification is required
- No additional staffing or compensation will be necessary due to the limited scope of additional duties
- Officers will require an additional background check, but a security clearance is not needed

Operations & Infrastructure

- The program requires no new infrastructure
- Oversight from ICE would be limited

Additional Operational Changes

- Outside of the 287g program, ICE has offered to provide on-site training to our detention officers.
- ICE will provide the Tarrant County Sheriff's Office booking questionnaire to enhance our ability to recognize potential immigration violations, to include Class C arrests.



Questions?
Deputy Chief Jared Lemoine
817-743-4500

Excellence • Integrity • Service • Creativity • Communication