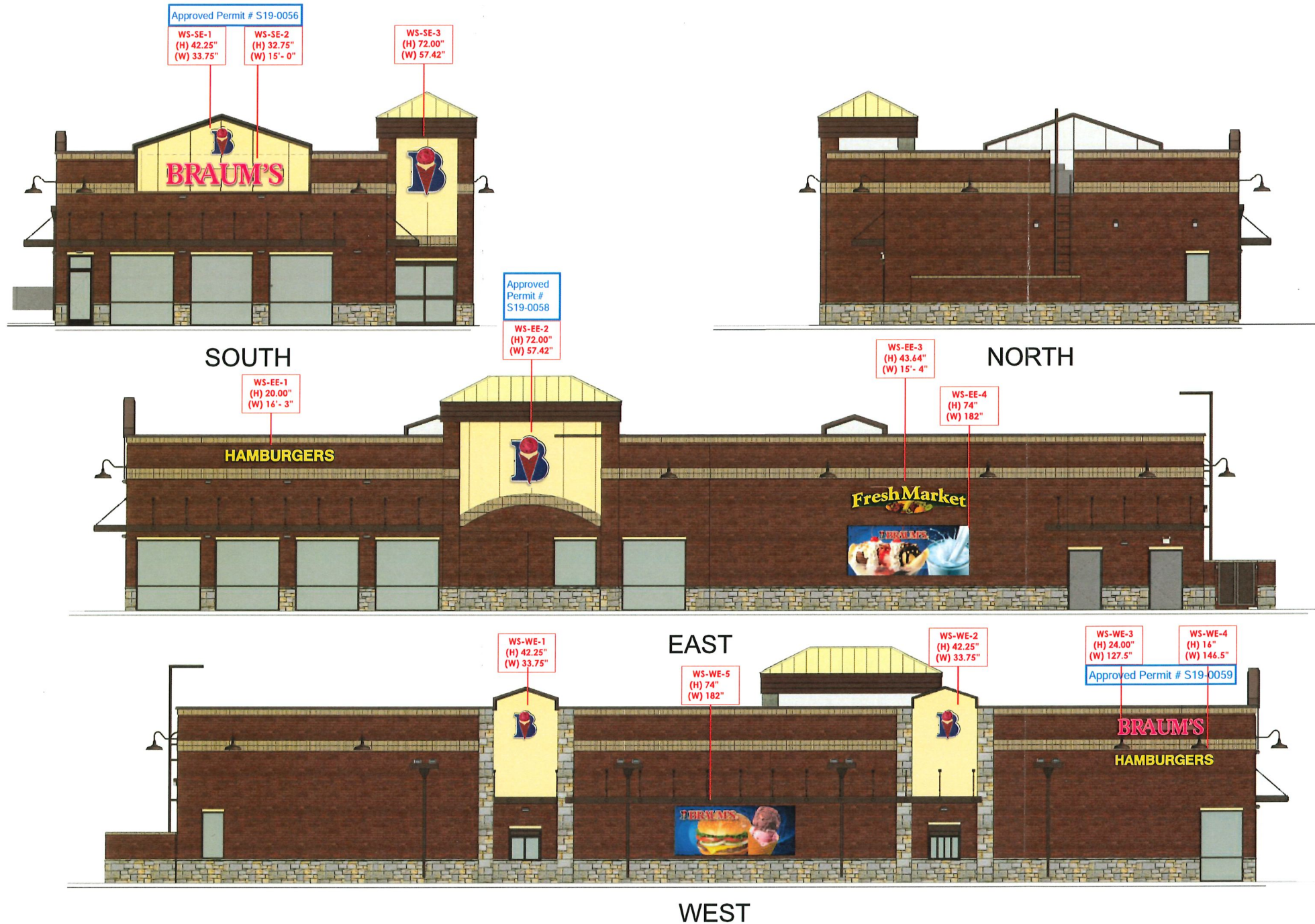


PROPOSED SIGNAGE



SIGN SPECIFICATIONS

SOUTH ELEVATION:
 INSTALL NEW (NON-STANDARD) 42.25" LED INTERNALLY ILLUMINATED LOGO CABINET WALL SIGN
 INSTALL NEW 72" LED INTERNALLY ILLUMINATED LOGO CABINET WALL SIGN
 INSTALL NEW 32.75" BRAUM'S LED INTERNALLY ILLUMINATED PAN EMBOSSED RACEWAY MOUNTED CHANNEL LETTERS

NORTH ELEVATION:
 N/A

EAST ELEVATION:
 • INSTALL NEW (NON-STANDARD) 42.25" LED INTERNALLY ILLUMINATED LOGO CABINET WALL SIGNS -- QTY-1
 INSTALL NEW 20" HAMBURGERS LED INTERNALLY ILLUMINATED RACEWAY MOUNTED CHANNEL LETTERS
 INSTALL NEW 72" LED INTERNALLY ILLUMINATED LOGO CABINET WALL SIGN
 INSTALL NEW 43" LED INTERNALLY ILLUMINATED RACEWAY MOUNTED FRESH MARKET CHANNEL LETTERS AND CABINET

WEST ELEVATION:
 • INSTALL NEW (NON-STANDARD) 42.25" LED INTERNALLY ILLUMINATED LOGO CABINET WALL SIGNS -- QTY-2
 • INSTALL NEW 24" BRAUM'S LED INTERNALLY ILLUMINATED PAN EMBOSSED RACEWAY MOUNTED CHANNEL LETTERS
 • INSTALL NEW 16" HAMBURGERS LED INTERNALLY ILLUMINATED RACEWAY MOUNTED CHANNEL LETTERS

SIGN CALCULATIONS

SOUTH ELEVATION:
 (WS-SE-1) 42.25" X 33.75" = 9.90 SF
 (WS-SE-2) 32.75" X 15'-0" = 40.94 SF
 (WS-SE-3) 72.00" X 57.42" = 28.71 SF

NORTH ELEVATION:
 N/A

EAST ELEVATION:
 (WS-EE-1) 194.5" X 20.8" = 27.5 SF
 (WS-EE-2) 72.00" X 57.42" = 28.71 SF
 (WS-EE-3) 43.64" X 15'-4" = 55.8 SF
 (WS-EE-4) 74.00" X 182" = 93.8 SF

WEST ELEVATION:
 (WS-WE-1) 42.25" X 33.75" = 9.90 SF
 (WS-WE-2) 42.25" X 33.75" = 9.90 SF
 (WS-WE-3) 24.00" X 127.5" = 21.2 SF
 (WS-WE-4) 16.00" X 146.5" = 15.87 SF
 (WS-WE-5) 74.00" X 182" = 93.8 SF

TOTAL PROPOSED: 229.43 SF

CLIENT

Braums-Keller, TX

SALES

Dave Schridde 800.845.9927

SCALE

1/16" = 1'

AO#

18748

ARTIST

R Evans - Andrew Lovell

REVISION HISTORY

- 11.12.18 - NEW
- 12.11.18-Revision 2-Added "B"
- 12.13.18-Revision 3-Elevation Update and Permitting
- 12.14.18 - Rev 4-Color Change

T:\Cyrus\Doc\Order\18000\o18748 - Braums (498)\Art\Working Files

This drawing is Copyrighted material. It remains the property of Springfield Sign unless otherwise agreed upon in writing. It is unlawful to use this drawing for bidding purposes, nor can it be reproduced, copied, or used in the production of a sign without the written permission from Springfield Sign, Inc.

This is an artistic rendition and final colors/sizes may vary from that depicted herein.

APPROVED BY

DATE