

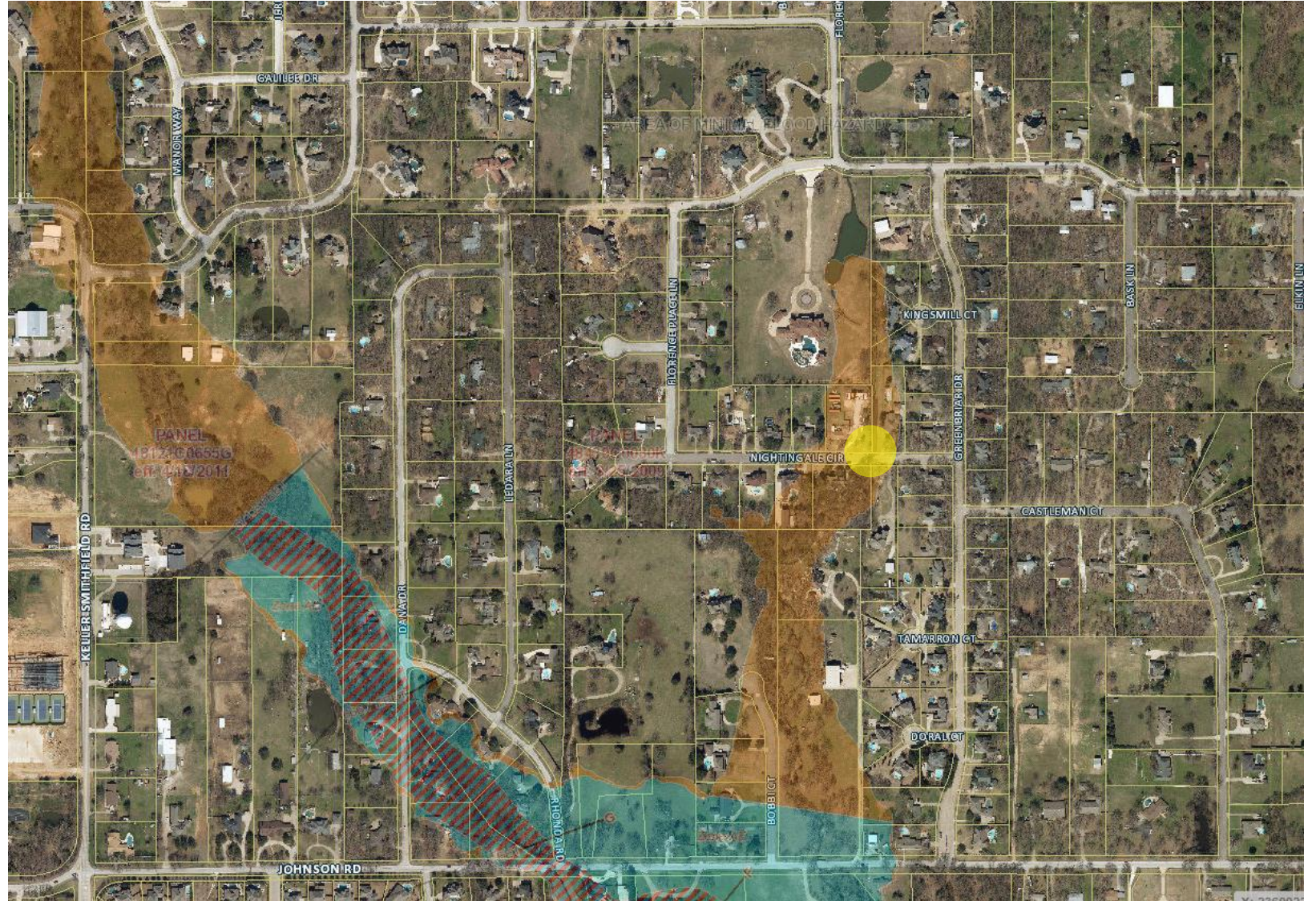
Nightingale Culvert Project Options Update

**City Council
January 5, 2021**

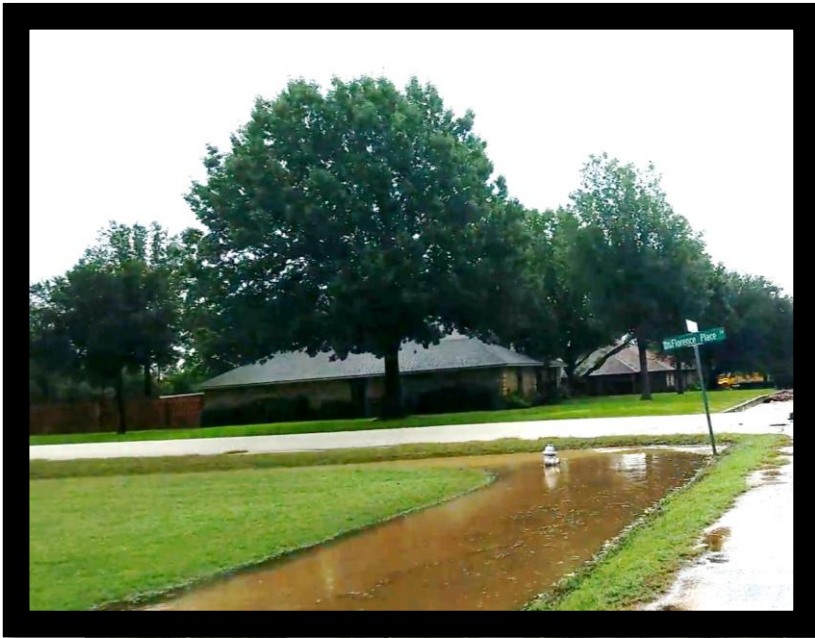
**Alonzo Liñán, PE
Director of Public Works**

Overview

- Residential Road
- FEMA Unmapped Area
- Low Water Crossing
- Swift Water Rescue

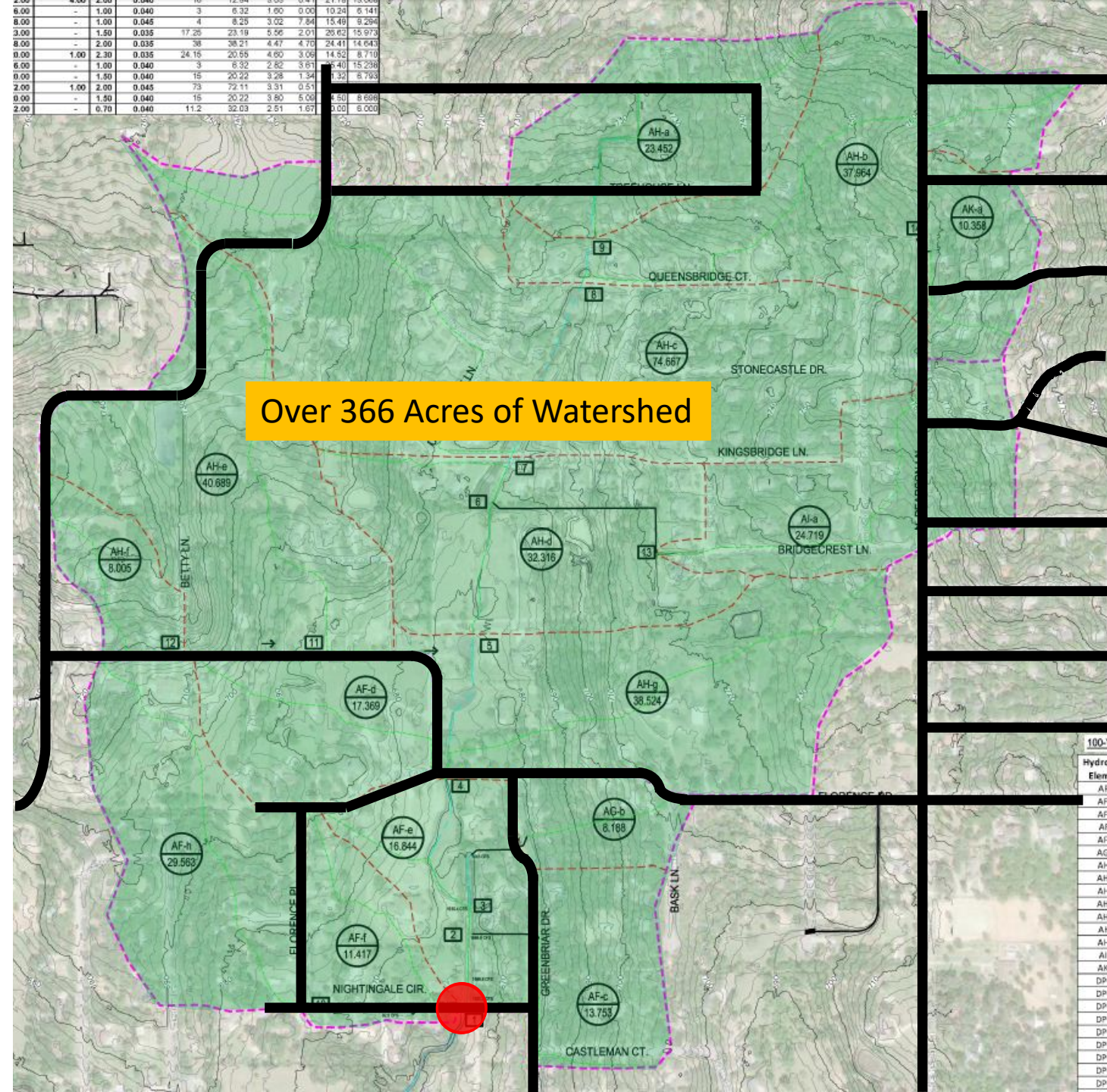


Existing Conditions



Previous Discussions

- X Do Nothing – Leave As Is
- X Close Road – Install Cul-de-Sacs
- X 1 Year Event Improvement
- ✓ *100 Year Event Improvement*
- ✓ *Consider 500 Year Event*
- ✓ *Address Current Ditch Concerns*



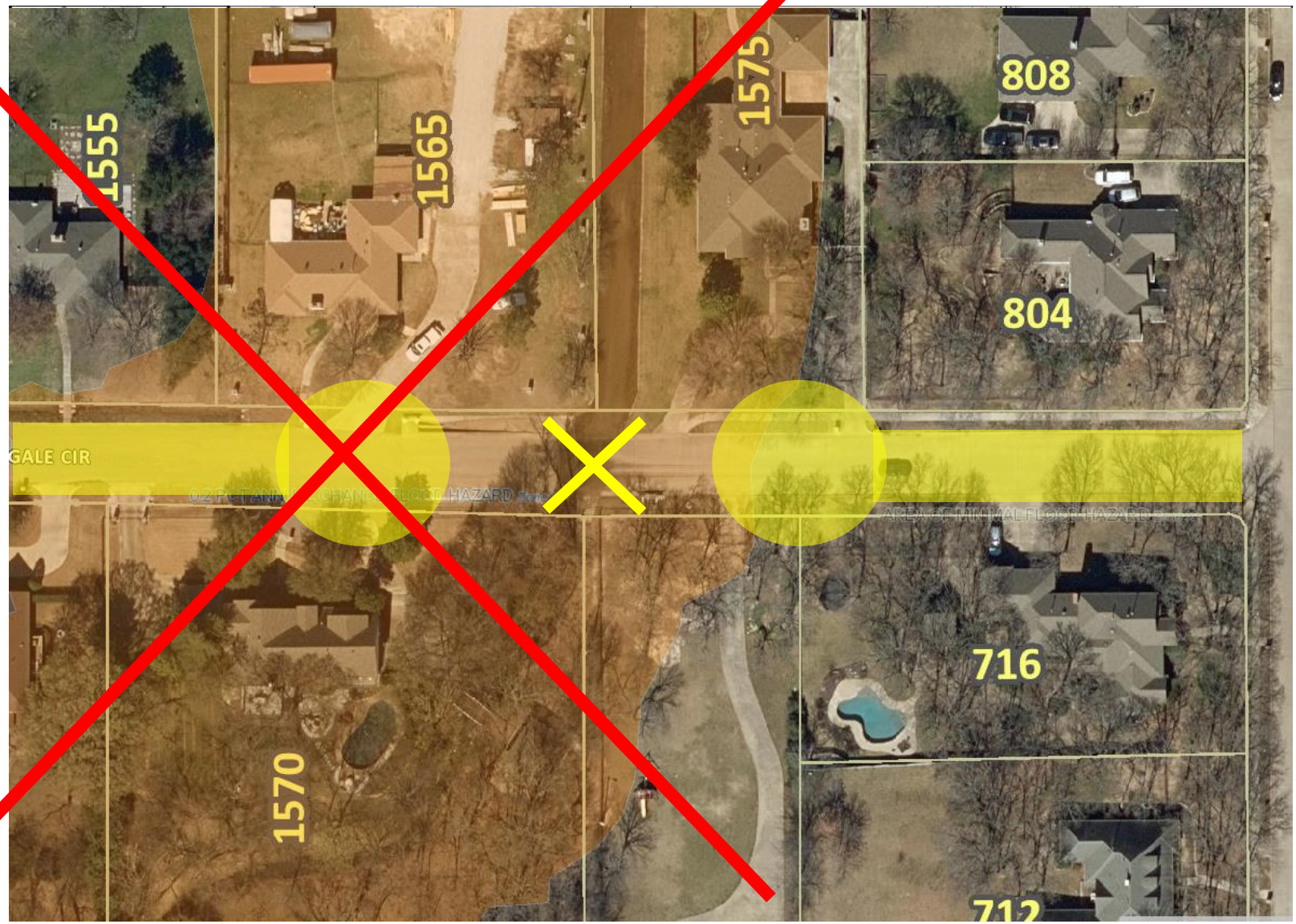
Option #1 – Do Nothing

Do Nothing – Leave As Is

- \$0k
- No Improvement



Option #2 – Close Street



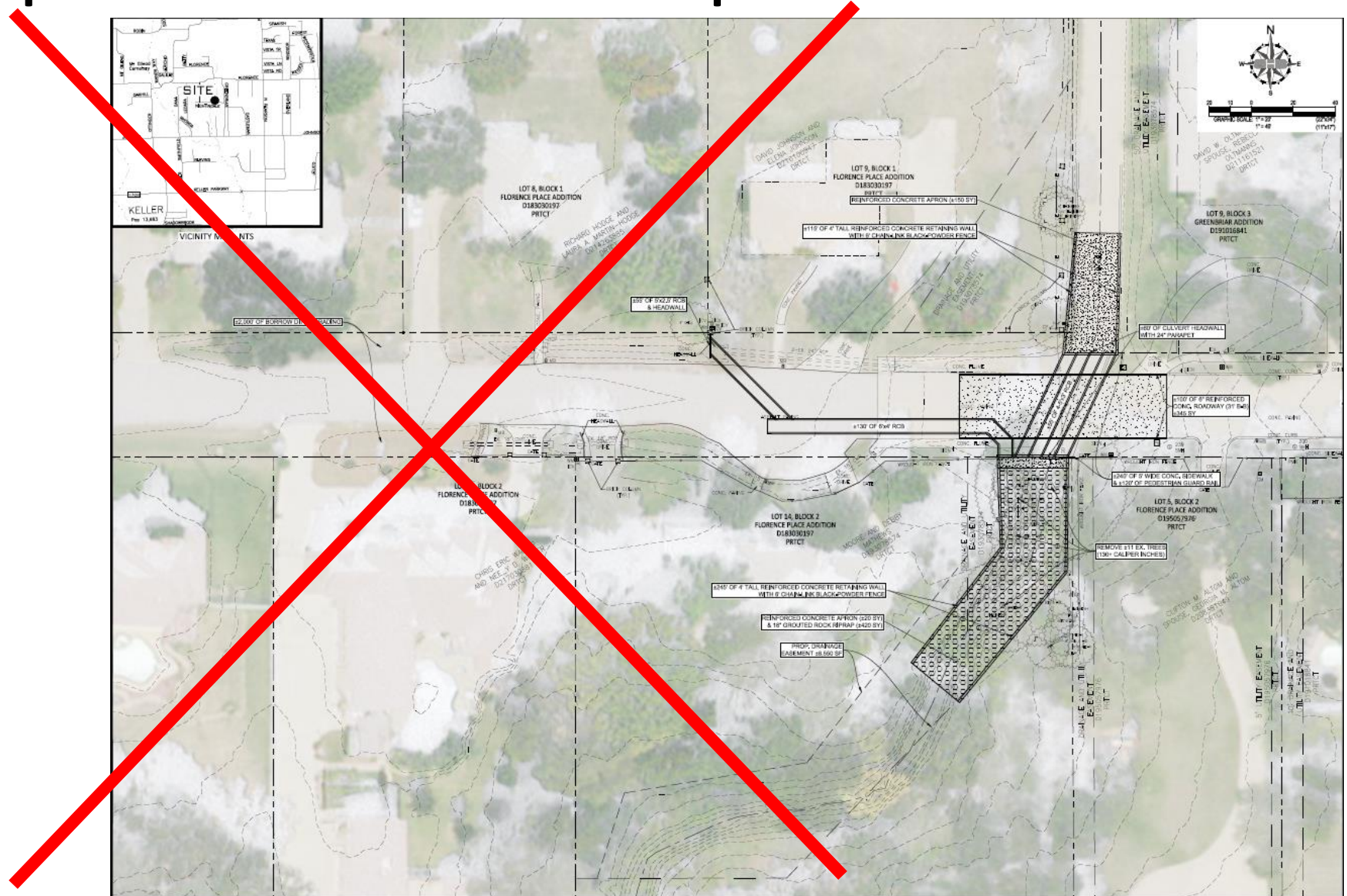
Close Road – Install Cul-de-Sacs

- ~ \$350k
- Removes traffic
- Removes pavement
- Requires easement/ROW
- No impact on emergency response times

Option #3 – One Year Event Improvement

Some Diversion

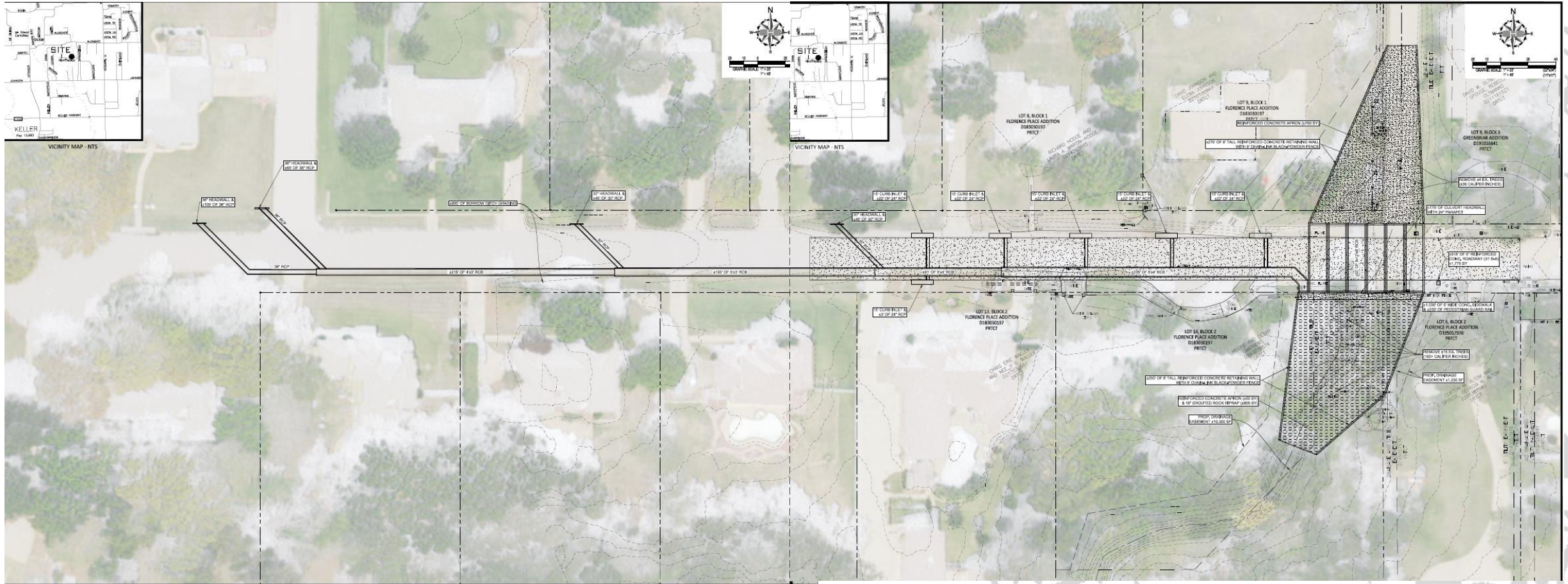
- ~ \$700k
- 1 Year Event



Option #4 – 100 Year Event

(from)

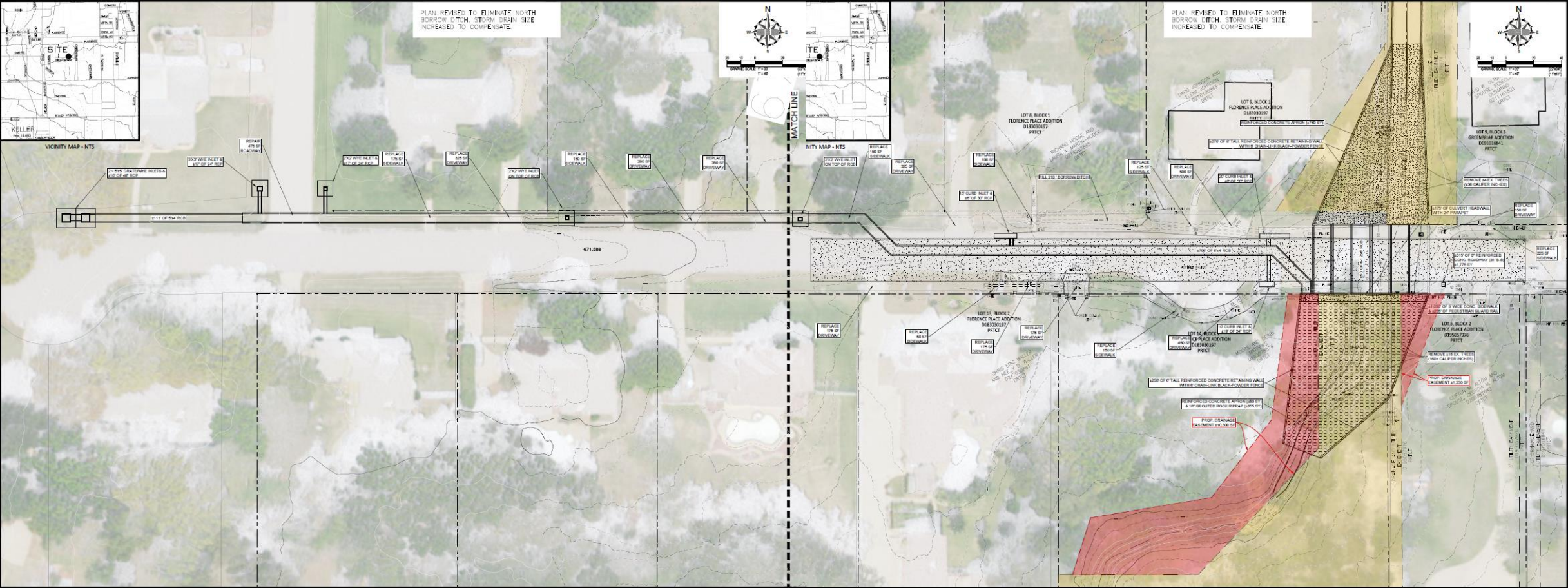
~ \$1.7M



Option #4 – 100 Year Event

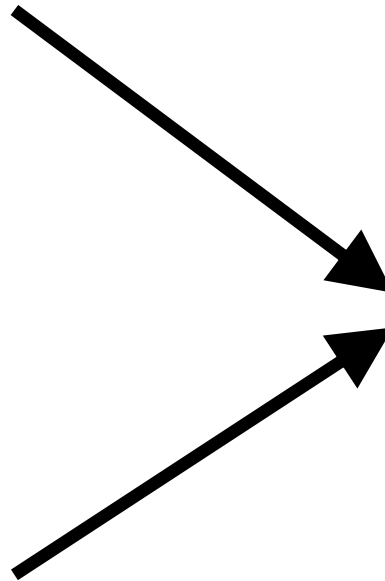
(to)

~ \$1.95M



Option #4 – 100 Year Event

From



To



Resident Meetings

To seek resident feedback to fully address area issues

- Avoid partial solutions
- Consider retaining wall/overall project aesthetics
- Consider fencing material
- Don't ignore the condition of “the rest of the street”
- Mixed views on sidewalks
- Property owners are supportive but need more impact details

Residents Contacted



Excellence • Integrity • Service • Creativity • Communication

NEW OPTION; Active Warning Device(s)

\$25,000



\$100,000



- ✓ Addresses Vehicle/Water Conflict
- x Covering of Bar Ditch
- x Area Drainage Concerns



NEW OPTION; Active Warning Device(s)

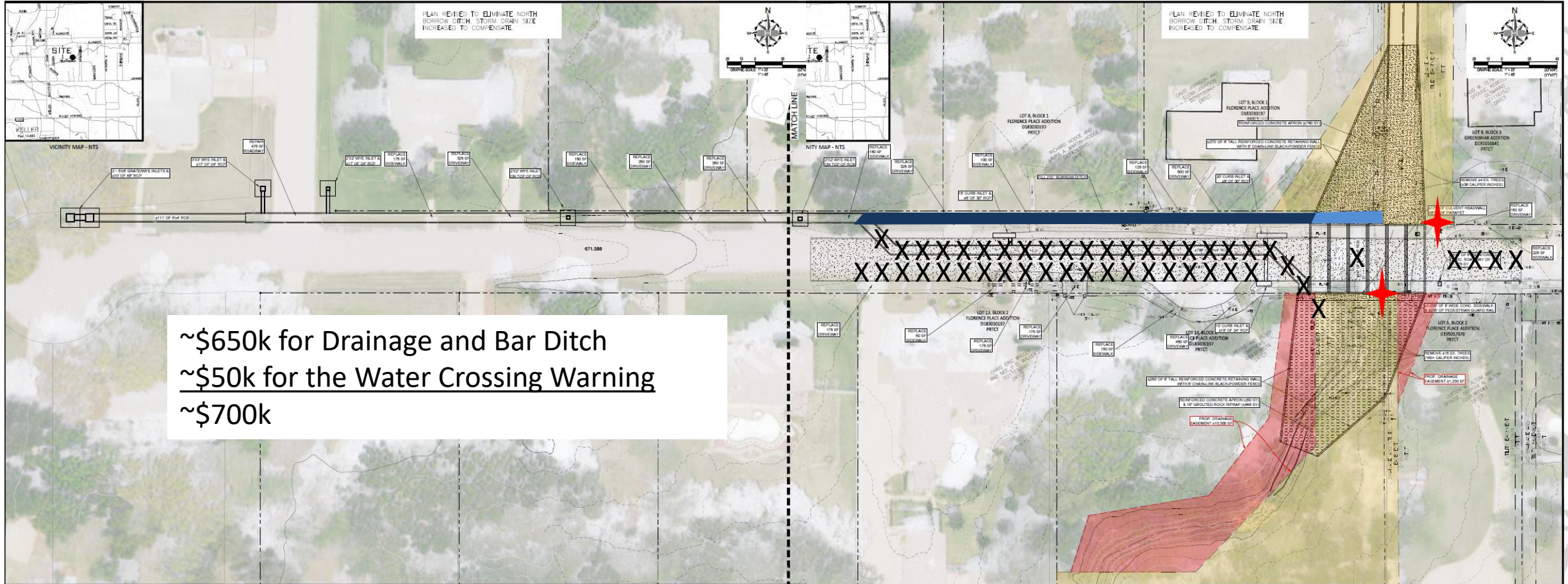


2 Locations
@ ~\$25k each
~ \$50k



2 Locations
@ ~\$100k each
~ \$200k

NEW OPTION; Active Warning Device(s) *PLUS Drainage Work*



Next Steps

- Agree on Scope of Improvement
- Secure Necessary Funding
- Sign contract to design accordingly
- Proceed to construction





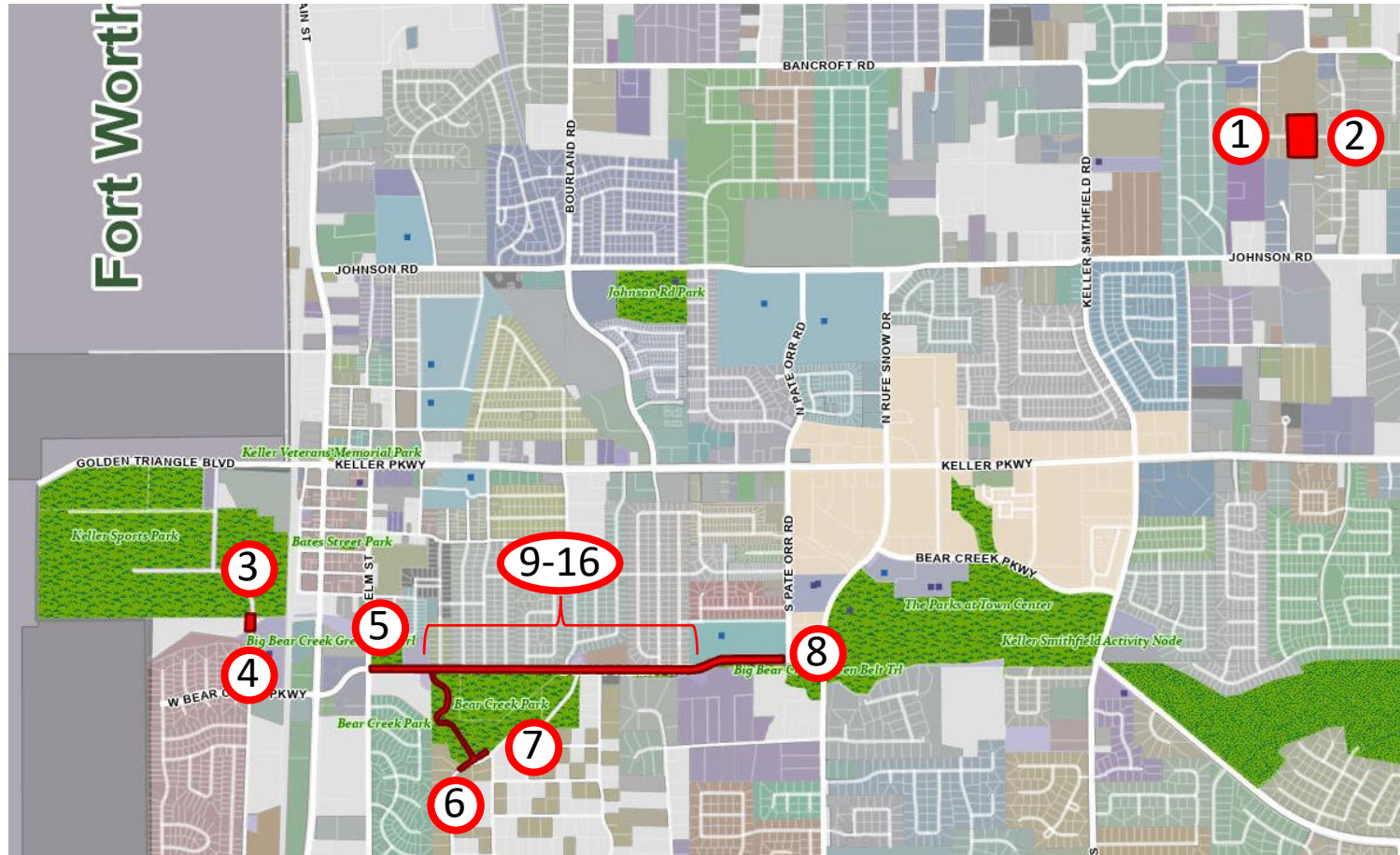
**Questions?
Alonzo Liñán
817-743-4026**

Excellence • Integrity • Service • Creativity • Communication

Active Warning Device(s)

An Expanded Opportunity?

16 Locations
@ ~\$25k each
~ \$400k

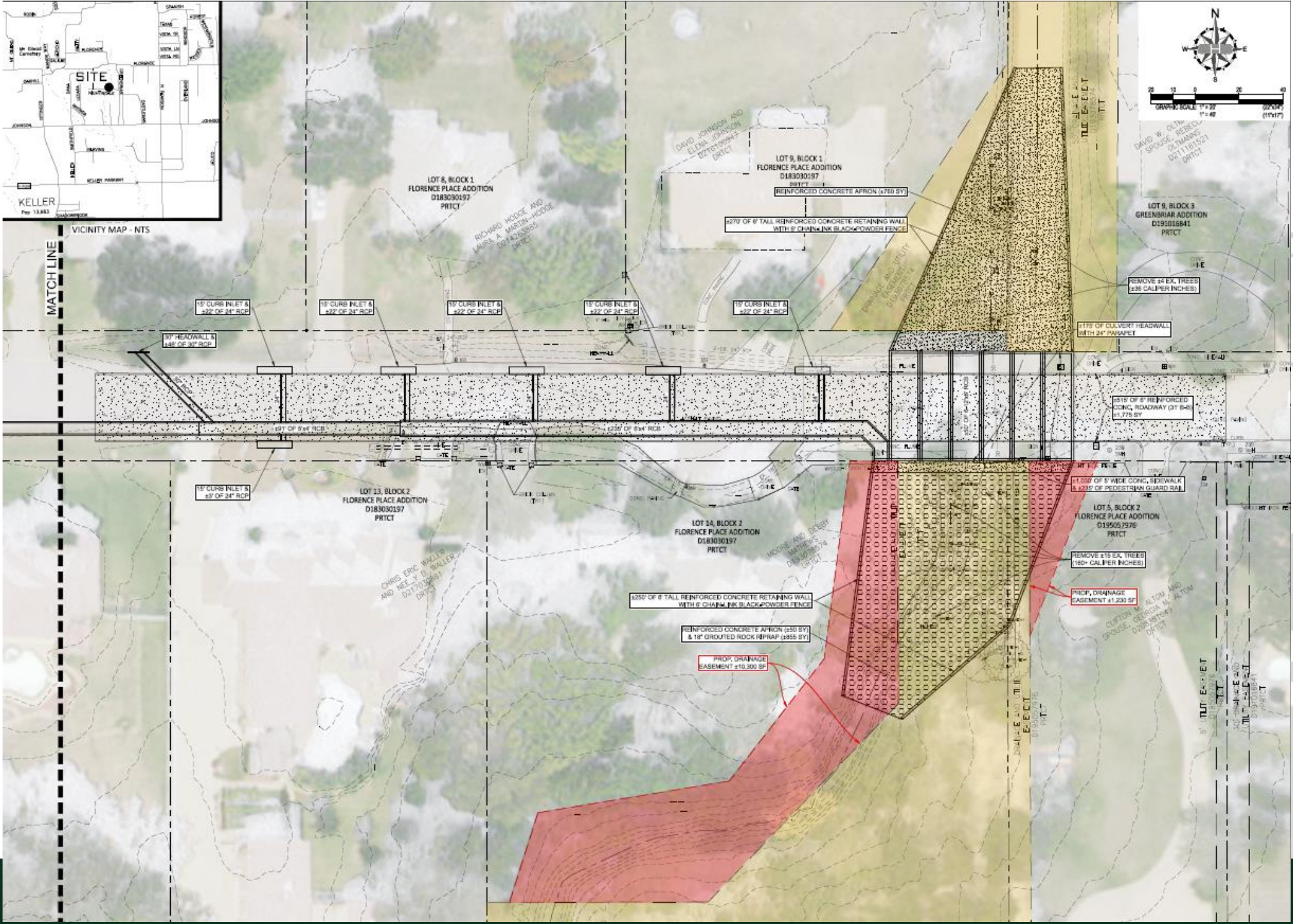


16 Locations
@ ~\$100k each
~ \$1.6M



VICINITY MAP - NTS

MATCH LINE



GRAPHIC SCALE 1" = 20'
1" = 40' (15'17")

DAVID W. OLIN
SPOUSE, SERVO
02116024
02116123
OFFICE

LOT 9, BLOCK 3
GREENBRIAR ADDITION
D191016841
PRCT

REMOVE 24 EX. TREES
(336 CALIPER INCHES)

1175 OF CULVERT HEADWALL
WITH 24" PARAPET

515' OF 8" REINFORCED
CONC. ROADWAY (3' 8-1/2")
41,775 SY

11,000' OF 9" WIDE CONC. SIDEWALK
& 421' OF PEDESTRIAN GUARD RAIL

LOT 5, BLOCK 2
FLORENCE PLACE ADDITION
D195057976
PRCT

REMOVE 175 EX. TREES
1760 CALIPER INCHES

PROF. DRAINAGE
EASEMENT 41,230 SF

DAVID W. OLIN
SPOUSE, SERVO
02116024
02116123
OFFICE

LOT 11, BLOCK 1
FLORENCE PLACE ADDITION
D183030197
PRCT

LOT 12, BLOCK 2
FLORENCE PLACE ADDITION
D183030197
PRCT

LOT 13, BLOCK 2
FLORENCE PLACE ADDITION
D183030197
PRCT

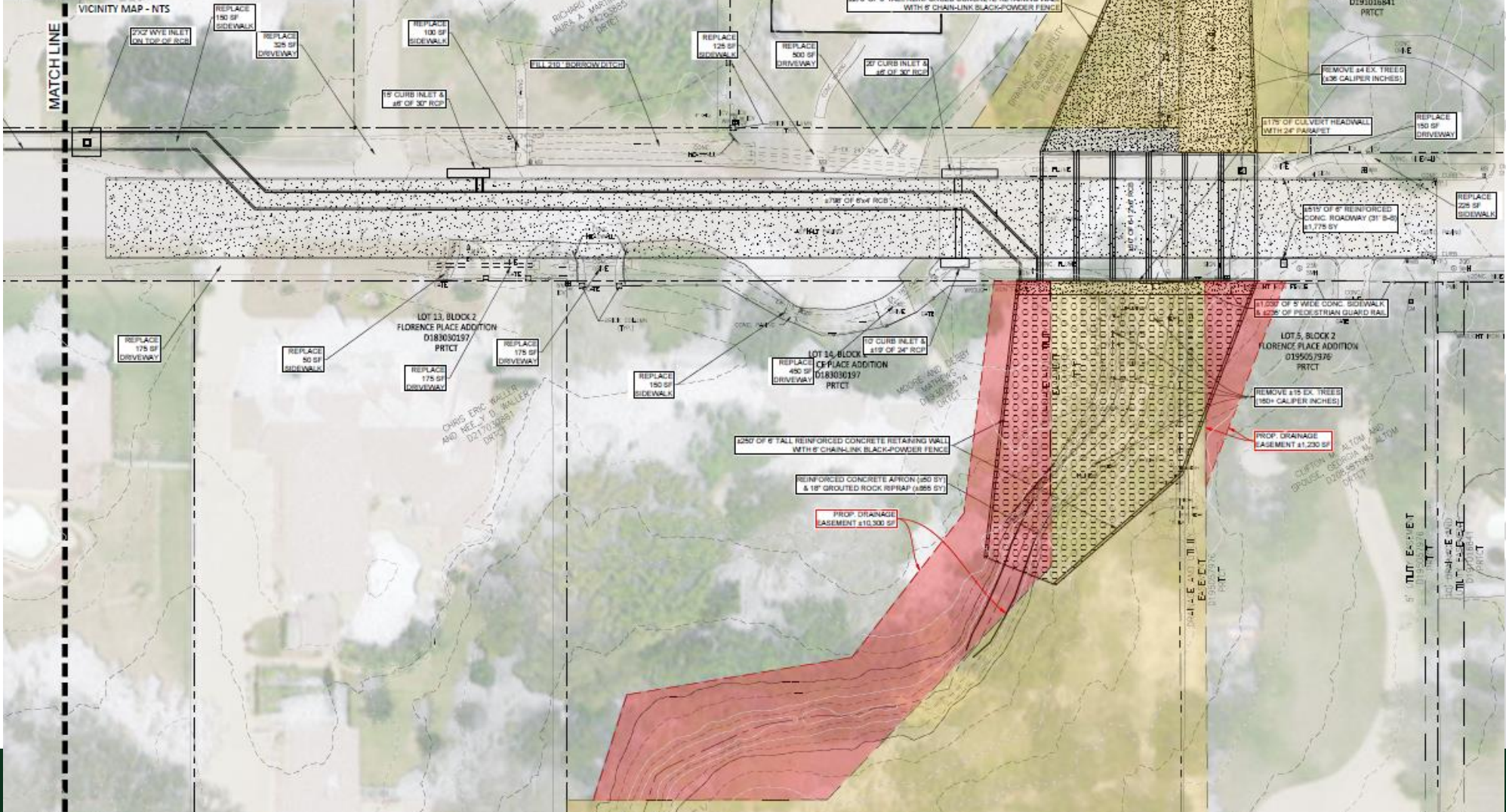
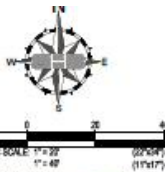
LOT 14, BLOCK 2
FLORENCE PLACE ADDITION
D183030197
PRCT

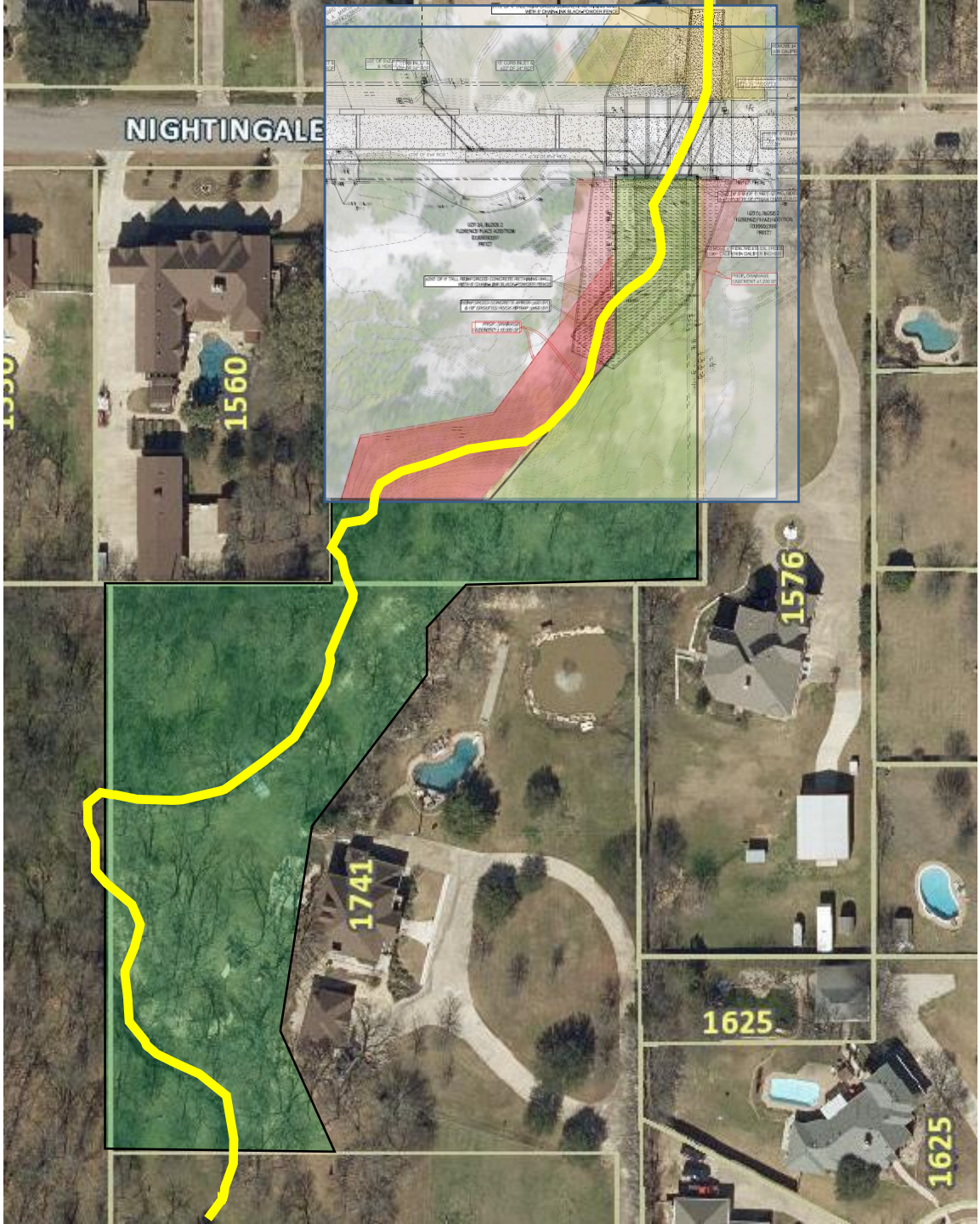


PLAN REVISED TO ELIMINATE NORTH BORROW DITCH. STORM DRAIN SIZE INCREASED TO COMPENSATE.



VICINITY MAP - NTS

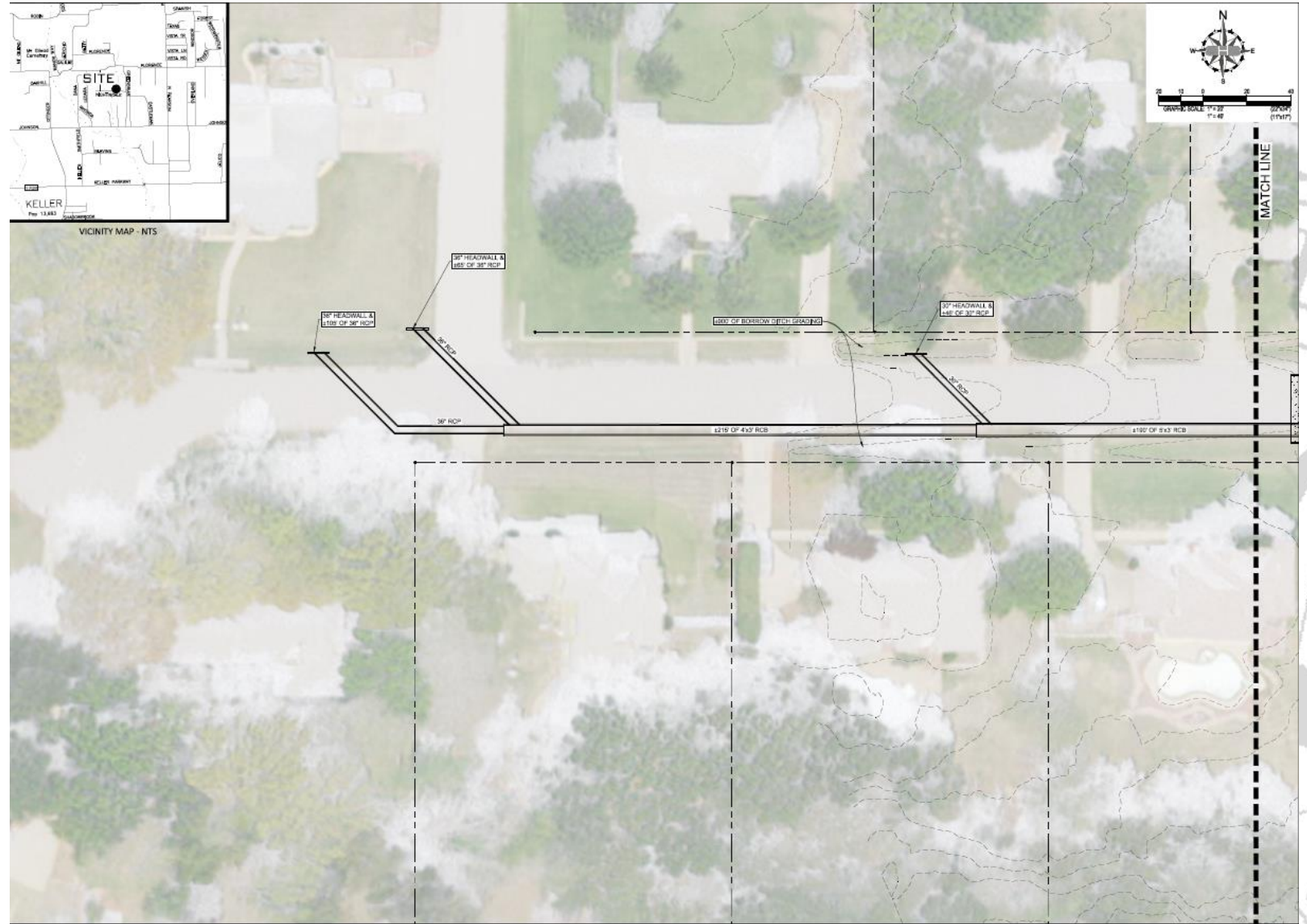




Excellence



Communication





VICINITY MAP - NTS

