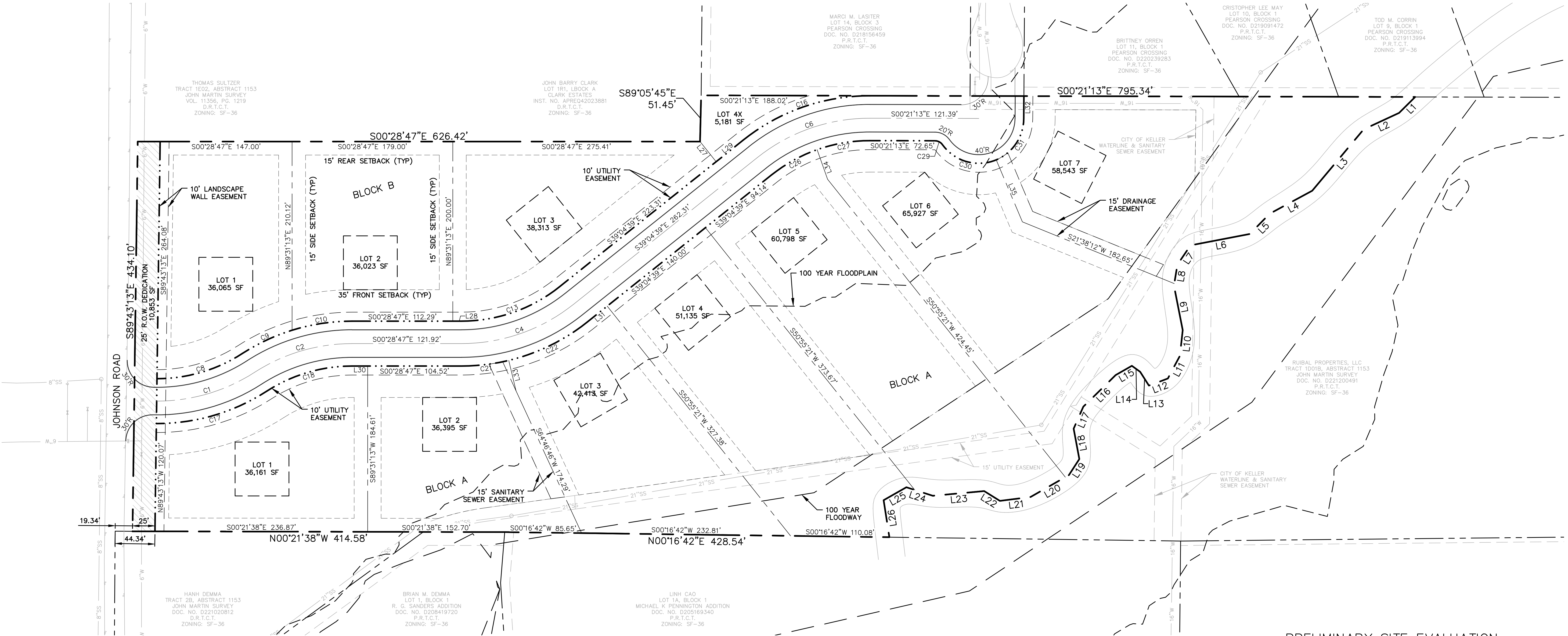
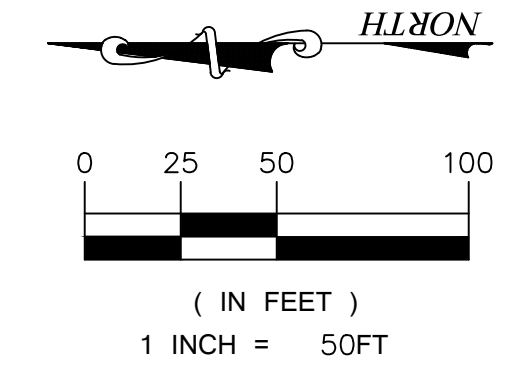
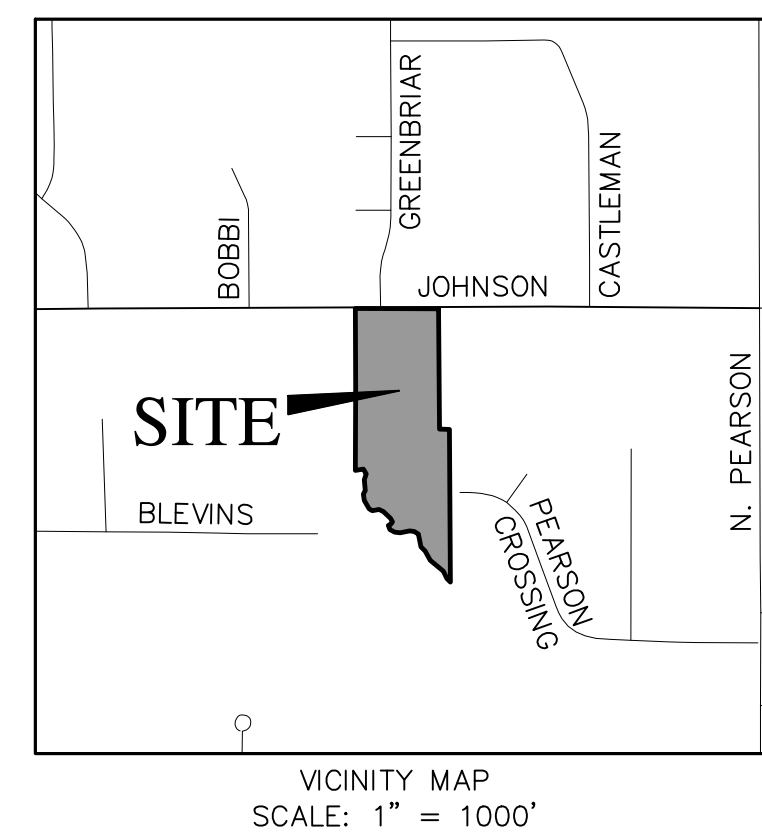


LINE TABLE			LINE TABLE			LINE TABLE		
LINE #	LENGTH	BEARING	LINE #	LENGTH	BEARING	LINE #	LENGTH	BEARING
L1	25.24'	N45°22'31"W	L16	50.24'	N44°45'09"W	L31	28.17'	S39°04'39"E
L2	43.33'	N25°13'06"W	L17	26.82'	N66°44'51"W	L32	25.21'	N89°53'14"E
L3	89.35'	N50°29'17"W	L18	34.44'	S78°56'03"W	L33	35.00'	S75°58'42"W
L4	53.95'	N28°54'47"W	L19	21.28'	N57°23'21"W	L34	35.00'	S70°02'56"W
L5	31.60'	N45°59'28"W	L20	49.22'	N30°09'29"W	L35	75.00'	S66°38'12"W
L6	67.31'	N11°21'16"W	L21	34.41'	N07°44'55"W			
L7	26.16'	N56°35'59"W	L22	20.64'	N31°17'10"E			
L8	23.30'	N81°13'01"W	L23	57.38'	N05°41'56"W			
L9	50.61'	S78°25'00"W	L24	30.95'	N17°26'40"E			
L10	28.89'	N84°06'57"W	L25	28.24'	N30°09'07"W			
L11	28.45'	N62°34'10"W	L26	41.64'	S80°36'53"W			
L12	22.56'	N21°00'58"W	L27	28.73'	N50°55'21"E			
L13	18.20'	N57°04'49"E	L28	9.63'	S00°28'47"E			
L14	11.39'	N35°24'45"E	L29	38.99'	S39°04'39"E			
L15	20.83'	N30°19'39"W	L30	17.41'	S00°28'47"E			

CURVE TABLE						
CURVE #	LENGTH	RADIUS	DELTA	CH BEARING	CH LENGTH	
C1	115.17'	200.00'	32°59'40"	S16°51'28"E	113.59'	
C2	114.76'	200.00'	32°52'31"	S16°55'02"E	113.19'	
C4	134.73'	200.00'	38°35'52"	S19°46'43"E	132.20'	
C6	135.17'	200.00'	38°43'26"	S19°42'56"E	132.61'	
C8	100.50'	175.00'	32°54'10"	S16°54'12"E	99.12'	
C9	61.37'	225.00'	15°37'42"	S25°32'26"E	61.18'	
C10	67.73'	225.00'	17°14'49"	S09°06'11"E	67.47'	
C13	117.89'	175.00'	38°35'52"	S19°46'43"E	115.67'	
C16	152.07'	225.00'	38°43'26"	S19°42'56"E	149.19'	
C17	129.85'	225.00'	33°03'56"	S16°49'20"E	128.05'	
C18	100.41'	175.00'	32°52'31"	S16°55'02"E	99.04'	
C21	53.18'	225.00'	13°32'31"	S07°15'02"E	53.06'	
C22	98.39'	225.00'	25°03'21"	S26°32'58"E	97.61'	
C26	58.41'	174.93'	19°07'50"	S29°30'44"E	58.13'	
C27	59.87'	175.21'	19°34'39"	S10°09'29"E	59.58'	
C29	9.48'	10.00'	54°18'55"	S26°48'15"W	9.13'	
C30	67.32'	49.94'	77°14'23"	S15°20'31"W	62.33'	
C31	58.33'	50.13'	66°40'33"	S56°36'57"E	55.10'	

SITE DATA	
NUMBER OF LOTS	10 RESIDENTIAL 1 OPEN SPACE
NUMBER OF LOTS PER ZONING CATEGORY	11
TOTAL ACERAGE	12.21 ACRES
MINIMUM LOT SIZE	36,000 SF
MINIMUM DWELLING UNIT SIZE	2,400 SF
DENSITY PER ACRE	0.90 LOTS/ACRES

- NOTES:
- ALL SETBACKS SHALL BE IN ACCORDANCE WITH THE ZONING DISTRICT, AS DESCRIBED IN THE KELLER UNIFIED DEVELOPMENT CODE.
  - FOR LOT 1, BLOCK A FOR AN AVERAGE DEPTH OF 152.34' IN LIEU OF THE REQUIRED 200' DEPTH.
  - FOR LOT 2, BLOCK A FOR AN AVERAGE DEPTH OF 196.95' IN LIEU OF THE REQUIRED 200' DEPTH.



PRELIMINARY SITE EVALUATION APPROVED BY THE CITY OF KELLER CITY COUNCIL FOR THE PREPARATION OF A FINAL PLAT

MAYOR \_\_\_\_\_ DATE \_\_\_\_\_  
CITY SECRETARY \_\_\_\_\_ DATE \_\_\_\_\_

OWNER:  
FOUNDERS DEVELOPMENT COMPANY, LP  
6449 NORTHPORT DRIVE  
DALLAS, TEXAS 75230  
(817) 480-9904  
CONTACT: CARY CLARKE

ENGINEER:  
REDINGER GROUP, LLC  
P.O. BOX 93206  
SOUTHLAKE, TEXAS 76092  
PHONE: (817) 253-5727-6210  
CONTACT: CLAYTON REDINGER

PRELIMINARY SITE EVALUATION  
OF  
**WINDING CREEK**  
10 RESIDENTIAL LOTS & 1 OPEN SPACE LOT  
JOHN MARTIN SURVEY  
ABSTRACT NO. 1153, TRACTS 1D & 1D01  
IN THE  
CITY OF KELLER, TARRANT COUNTY, TEXAS  
BEING  
12.21 ACRES  
EXISTING ZONING: SF-36  
PROPOSED ZONING: SF-36  
PREPARED: APRIL 2022



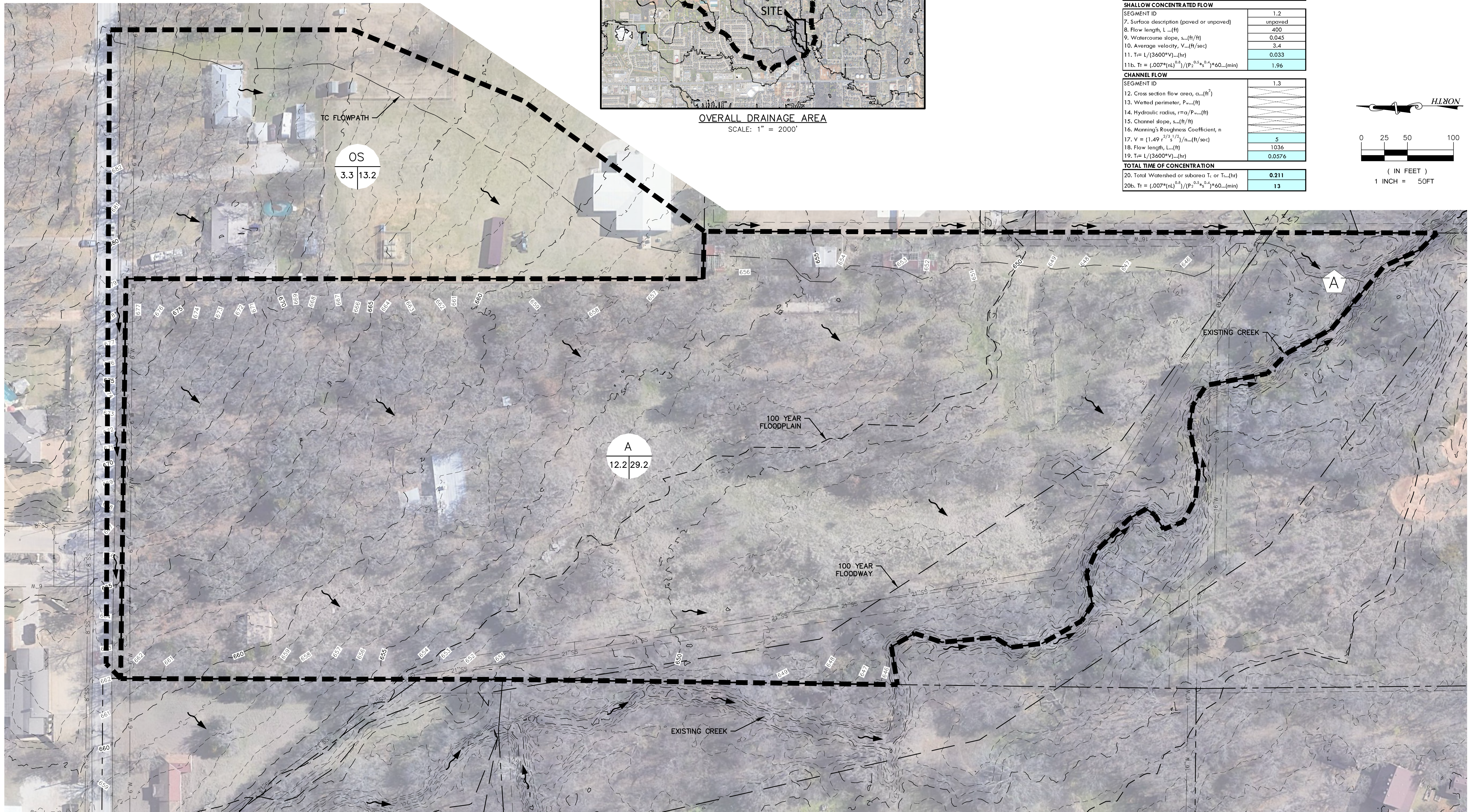
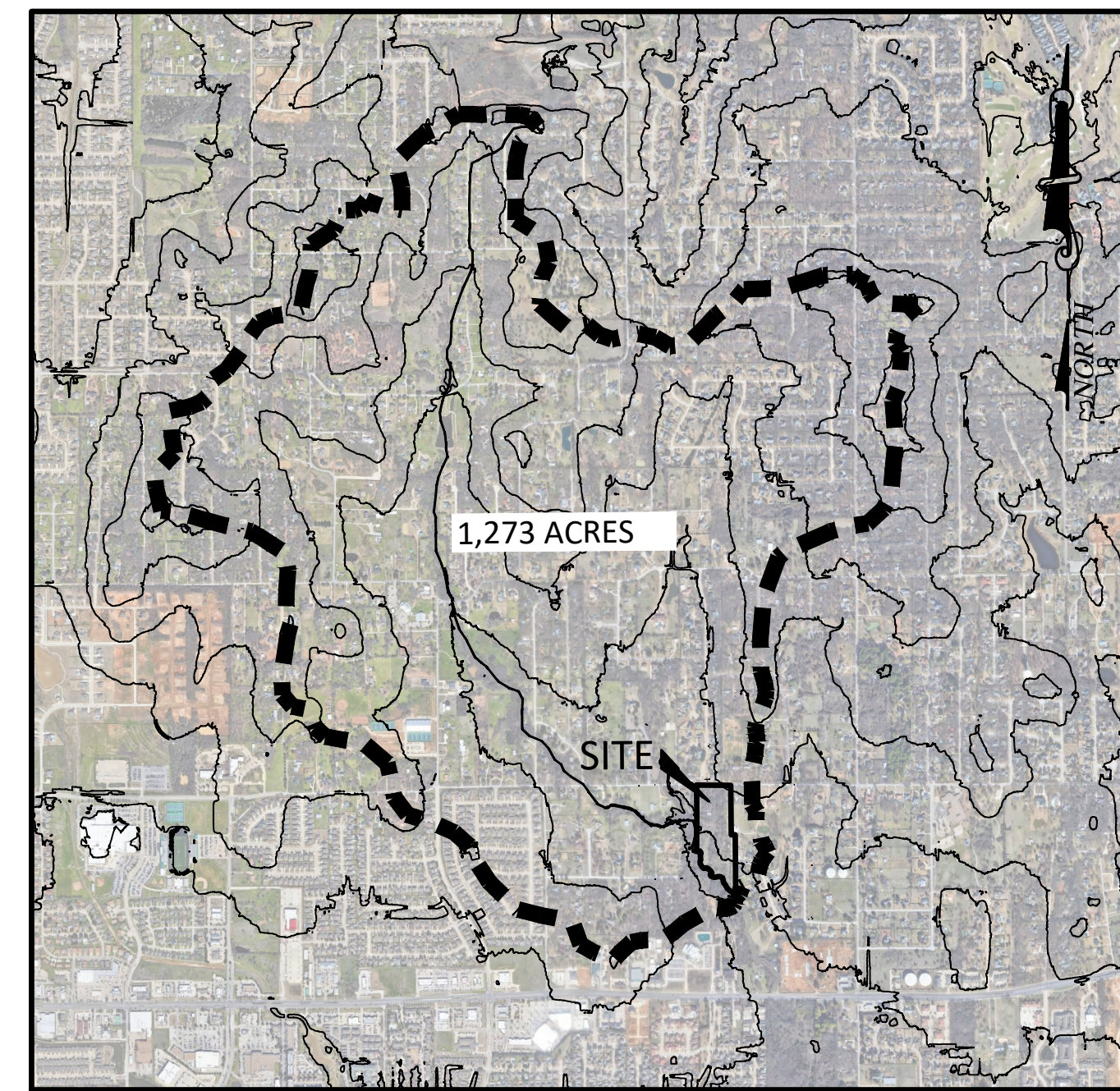
**LEGEND**

- NAME AC 0100 DRAINAGE AREA LABEL
- FLOW ARROW (POST-PROJECT)
- DRAINAGE DIVIDE
- EXISTING CONTOUR MINOR
- EXISTING CONTOUR MAJOR
- DESIGN POINT

**RATIONAL METHOD RUNOFF CALCULATIONS (EXISTING)**

AREA NO.	AREA(AC)	DESCRIPTION	C VALUE	Tc(MIN)	I1 (IN/HR)	Q1 (CFS)	I10 (IN/HR)	Q10 (CFS)	I100 (IN/HR)	Q100 (CFS)
OS	3.3	RES (>0.5AC)	0.50	15	3.32	5.5	5.53	9.1	7.98	13.2
A	12.2	UNDEV.	0.30	15	3.32	12.2	5.53	20.2	7.98	29.2

THIS DEVELOPMENT DISCHARGES DIRECTLY TO A FEMA REGULATED FLOODPLAIN (STREAM BB-10). THE TOTAL DEVELOPED AREA IS APPROXIMATELY 12.2 ACRES. THE OVERALL WATERSHED OF BB-10 AT THE POINT OF DISCHARGE IS APPROXIMATELY 1,273 ACRES (1.99 SQUARE MILES) AND HAS A TIME OF CONCENTRATION OF APPROXIMATELY 45 MINUTES. THE DEVELOPED SITE REPRESENTS APPROXIMATELY 0.96% OF THE OVERALL WATERSHED WHICH IS WELL BELOW THE THRESHOLD OF THE "10 PERCENT RULE" ZONE OF INFLUENCE AS DEFINED BY NCTCOG'S ISWM. THEREFORE ONSITE DETENTION CONTROLS WOULD HAVE NO SIGNIFICANT IMPACT ON DOWNSTREAM CONDITIONS. DETENTION IS NOT RECOMMENDED FOR THIS SITE.



**Time of Concentration or Travel Time Worksheet**

Project: Winding Creek  
 By: CTR  
 Date: 6/2/22  
 Location: Keller, TX  
 Condition (Present/Proposed): Present (Local)

**SHEET FLOW (Applicable to T<sub>c</sub> only)**

SEGMENT ID	1.1
1. Surface Description	Bermuda Grass
2. Manning's Roughness Coefficient	0.41
3. Flow Length, L (total L <= 300 ft)_(ft)	50
4. Two-yr 24 hr rainfall, P <sub>2</sub> _(in)	3.522
5. Land Slope, s_(ft/ft)	0.07
6. T <sub>c</sub> = (.007*(L <sup>0.55</sup> )/(P <sub>2</sub> <sup>0.5</sup> *s <sup>0.4</sup> ))_(hr)	0.121
6b. T <sub>c</sub> = (.007*(L <sup>0.55</sup> )/(P <sub>2</sub> <sup>0.5</sup> *s <sup>0.4</sup> ))*60_(min)	7.26

**SHALLOW CONCENTRATED FLOW**

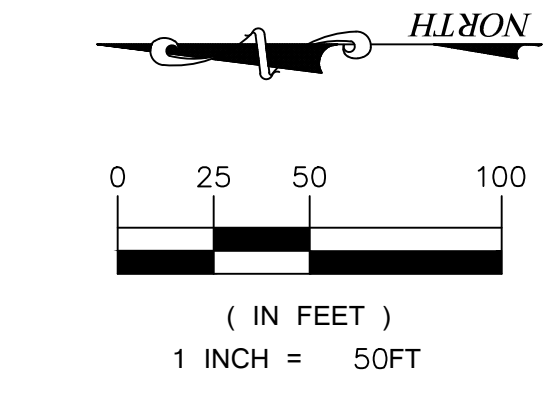
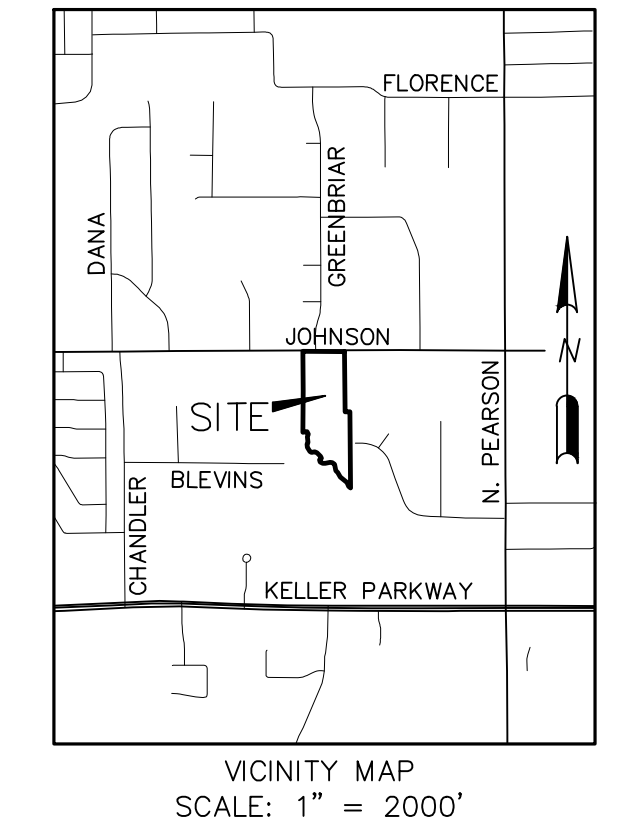
SEGMENT ID	1.2
7. Surface description (paved or unpaved)	unpaved
8. Flow length, L_(ft)	400
9. Watercourse slope, s_(ft/ft)	0.045
10. Average velocity, V_(ft/sec)	3.4
11. T <sub>c</sub> = L/(3600*V)_(hr)	0.033
11b. T <sub>c</sub> = (.007*(L <sup>0.55</sup> )/(P <sub>2</sub> <sup>0.5</sup> *s <sup>0.4</sup> ))*60_(min)	1.96

**CHANNEL FLOW**

SEGMENT ID	1.3
12. Cross section flow area, a_(ft <sup>2</sup> )	
13. Wetted perimeter, P_w_(ft)	
14. Hydraulic radius, r=a/P_w_(ft)	
15. Channel slope, s_(ft/ft)	
16. Manning's Roughness Coefficient, n	
17. V = (1.49 * r <sup>2/3</sup> / n) * s <sup>1/2</sup> _(ft/sec)	5
18. Flow length, L_(ft)	1036
19. T <sub>c</sub> = L/(3600*V)_(hr)	0.0576

**TOTAL TIME OF CONCENTRATION**

20. Total Watershed or subarea T <sub>c</sub> or T <sub>c</sub> _(hr)	0.211
20b. T <sub>c</sub> = (.007*(L <sup>0.55</sup> )/(P <sub>2</sub> <sup>0.5</sup> *s <sup>0.4</sup> ))*60_(min)	13



**EXISTING DRAINAGE PLAN  
WINDING CREEK  
KELLER, TEXAS**

**BENCHMARKS:**  
 BM1  
 ELEV = XXX  
 BM2  
 ELEV = XXX

**PRELIMINARY FOR REVIEW ONLY**  
 Not for Construction or Permit Purposes  
 CLAYTON L. REDINGER  
 P.E. No. 87497




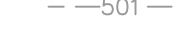
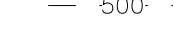
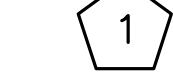
Date: 6/20/2022  
 Drawn By: DSM  
 Reviewed By: CTR  
 Project: 1001-01

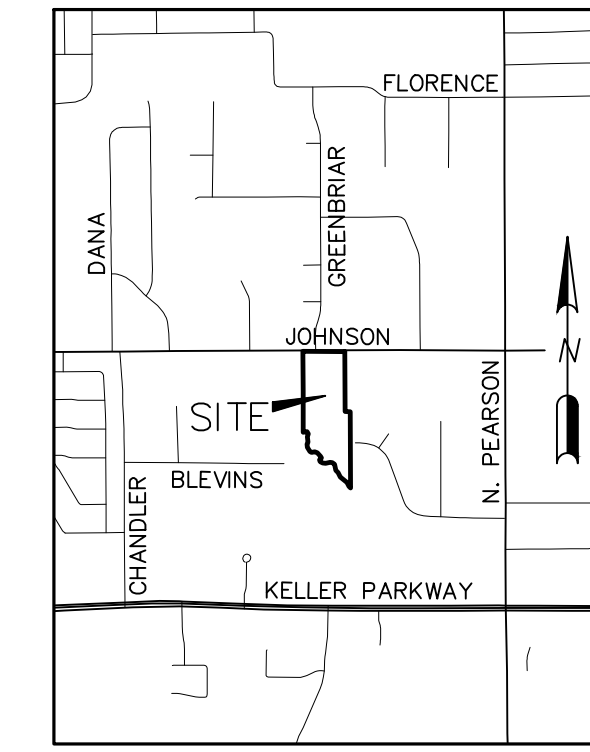
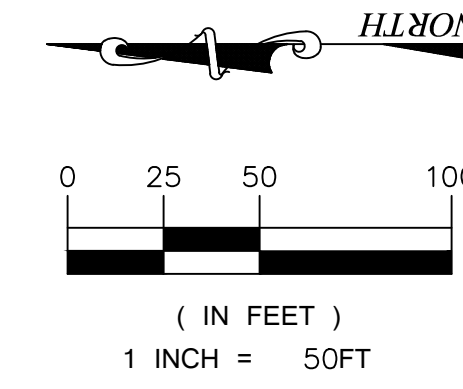
SHEET  
2



1. FINAL CALCULATIONS TO BE PROVIDED WITH FINAL ENGINEERING PLANS
2. CRITERIA BASED ON CITY OF FORT WORTH ISWM CRITERIA MANUAL FOR SITE DEVELOPMENT AND CONSTRUCTION. (LATEST EDITION)
3. DOCUMENTATION AND SUPPORTING CALCULATIONS FOR DETENTION ASSESSMENT TO BE PROVIDED BY SEPARATE REPORT.
4. FINAL ENGINEERING REVIEW AND COORDINATION MAY RESULT IN MINOR ADJUSTMENTS TO THIS PLAN

LEGEND

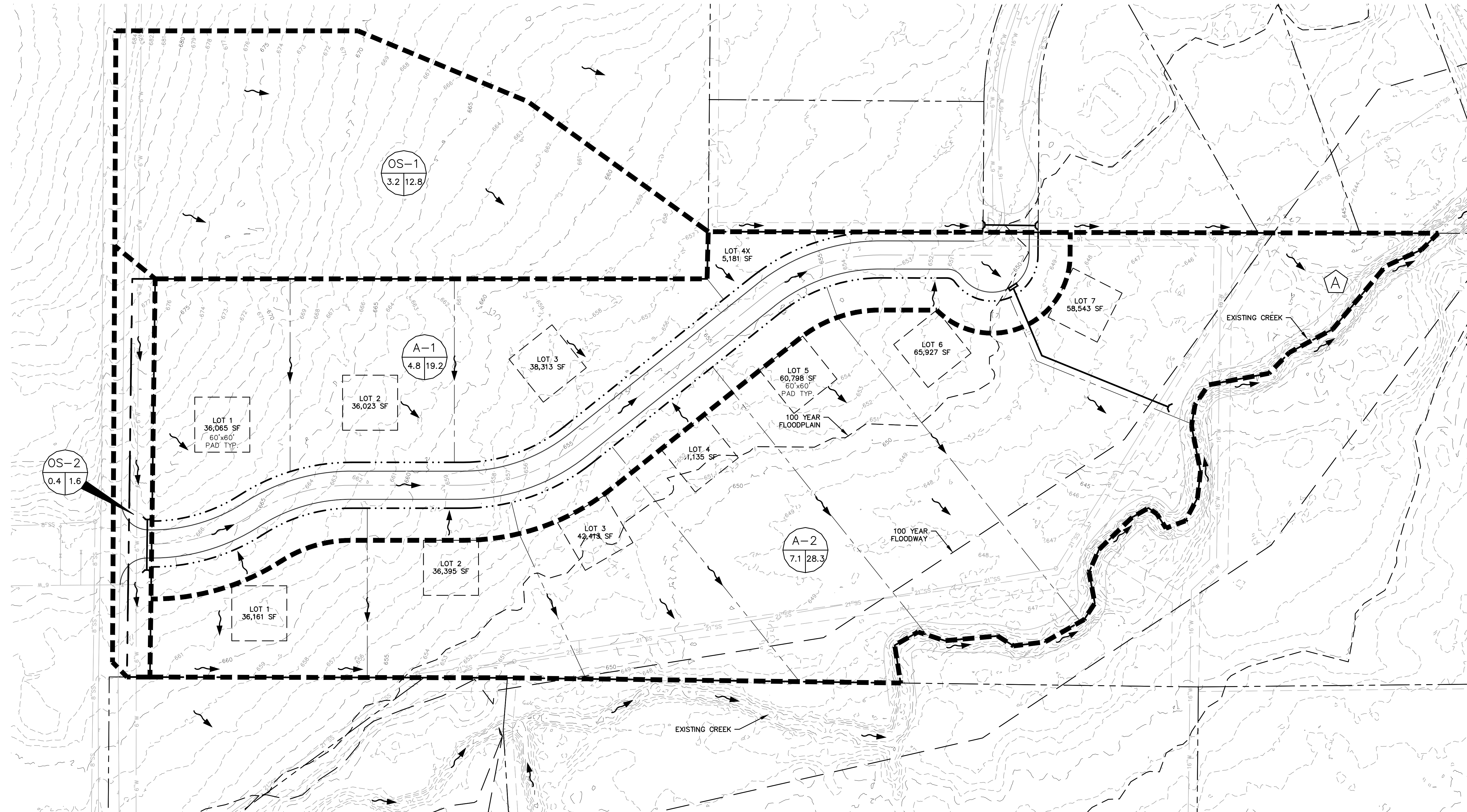
-  DRAINAGE AREA LABEL
-  FLOW ARROW (POST-PROJECT)
-  DRAINAGE DIVIDE
-  EXISTING CONTOUR MINOR
-  EXISTING CONTOUR MAJOR
-  DESIGN POINT



VICINITY MAP  
SCALE: 1" = 2000'

**RATIONAL METHOD RUNOFF CALCULATIONS (PROPOSED)**

AREA NO.	AREA(AC)	DESCRIPTION	'C' VALUE	T <sub>c</sub> (MIN)	I1 (IN/HR)	Q1 (CFS)	I10 (IN/HR)	Q10 (CFS)	I100 (IN/HR)	Q100 (CFS)
OS-1	3.2	RES (>0.5AC)	0.50	15	3.32	5.3	5.53	8.8	7.98	12.8
OS-2	0.4	RES (>0.5AC)	0.50	15	3.32	0.7	5.53	1.1	7.98	1.6
A-1	4.8	RES (>0.5AC)	0.50	15	3.32	8.0	5.53	13.3	7.98	19.2
A-2	7.1	RES (>0.5AC)	0.50	15	3.32	11.8	5.53	19.6	7.98	28.3



**REDINGER GROUP, LLC**  
 P.O. BOX 93004  
 SUITE 100  
 FORT WORTH, TEXAS 76163  
 PHONE: (817) 233-2277  
 ENGINEERING REGISTRATION NUMBER: 7-23259  
 PREPARED FOR:  
 FOUNDRYS DEVELOPMENT  
 6445 NORTHPOINT DRIVE  
 FORT WORTH, TEXAS 76132  
 PHONE: (817) 460-5904

**PRELIMINARY GRADING & DRAINAGE PLAN**  
**WINDING CREEK**  
**KELLER, TEXAS**

**BENCHMARKS:**  
 BM1  
 XXX  
 ELEV = XXX  
 BM2  
 XXX  
 ELEV = XXX

**PRELIMINARY FOR REVIEW ONLY**  
 Not for Construction or Permit Purposes  
 Engineer: CLAYTON L. REDINGER  
 P.E. No. 97497 - STATE OF TEXAS  
 6202022

Date: 6/20/2022  
 Drawn By: DSM  
 Reviewed By: CTR  
 Project: 1001-01

SHEET  
 3

CITY CASE NO. \_\_\_\_\_







REDINGER GROUP PROJECT No. 1001-01 - SITE PLAN FOR WINDING CREEK - KELLER, TEXAS

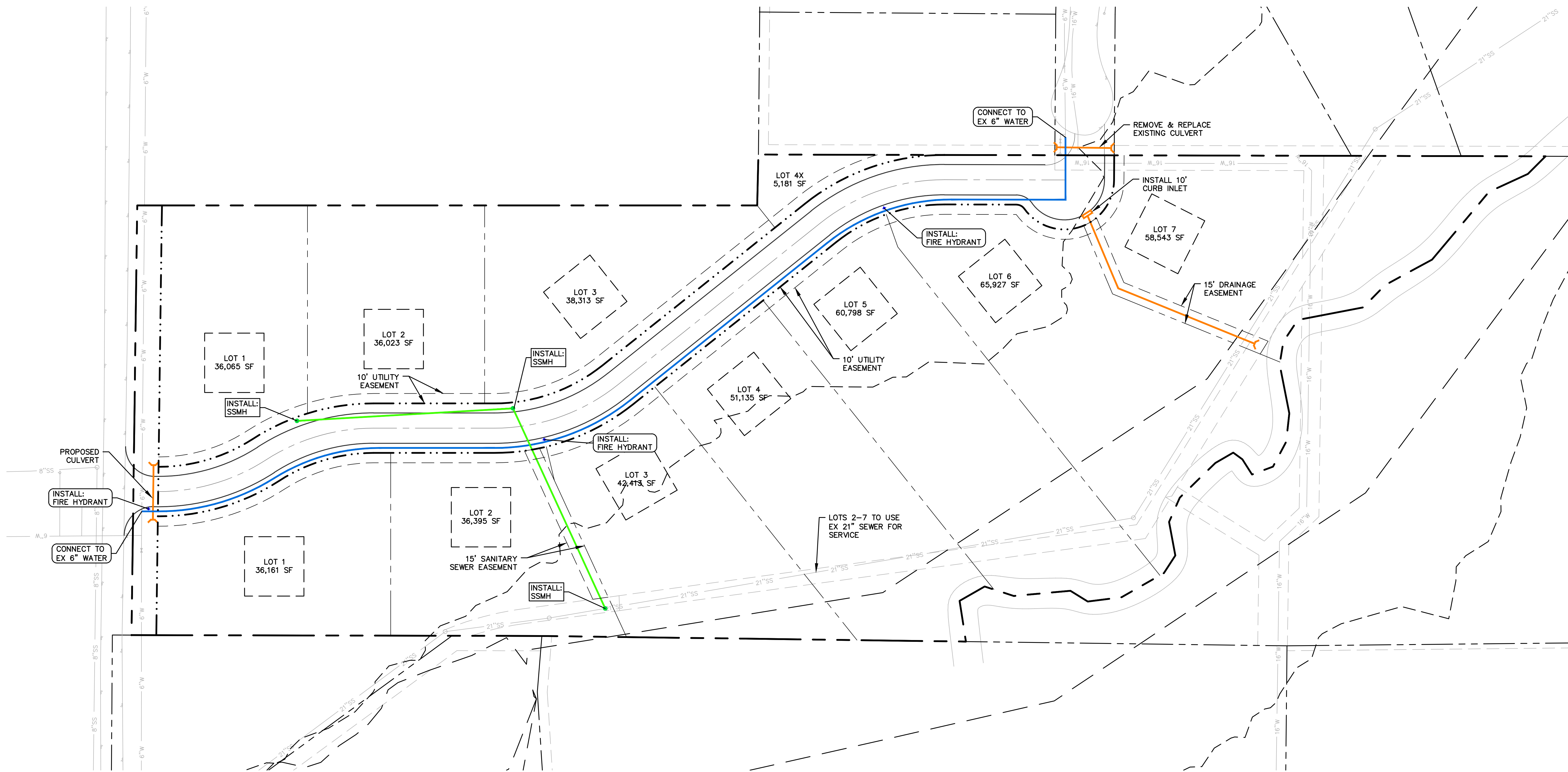
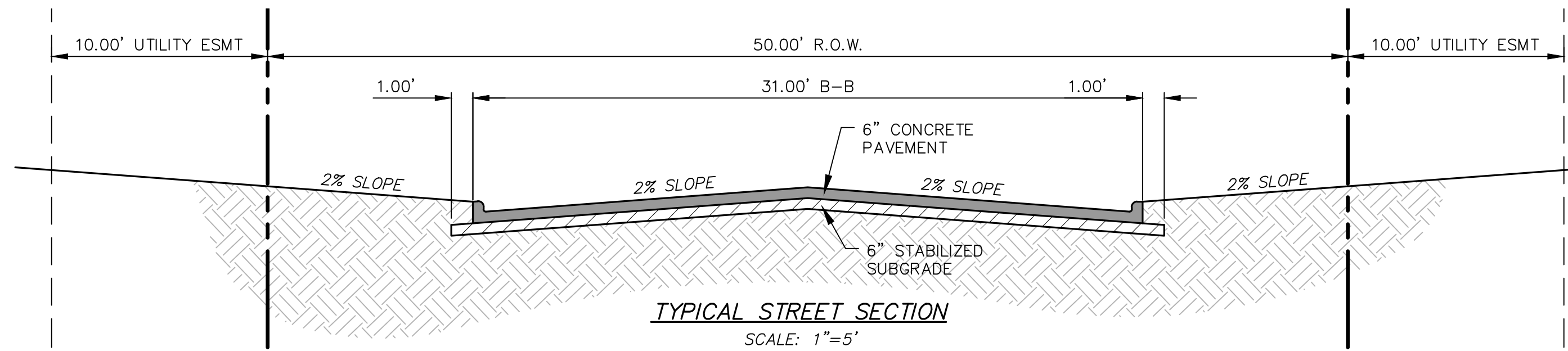
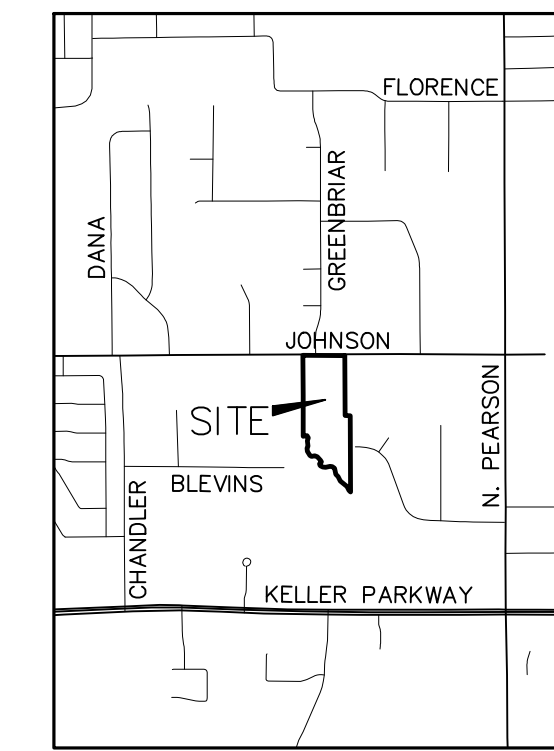
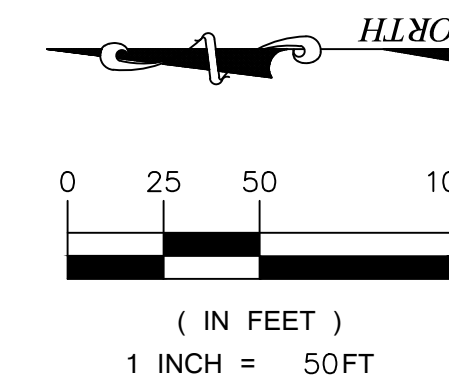


NOTES:

1. ALL SEWER LINE SHALL BE SDR-35 PVC.
2. ALL WATER PIPE SHALL BE SDR-18 C-900.
3. ALL CONSTRUCTION SHALL BE IN CONFORMANCE WITH THE CITY OF KELLER STANDARDS FOR PUBLIC WORKS CONSTRUCTION.
4. ALL SEWER SERVICES ARE PRIVATE.
5. ALL WATER SERVICES ARE PRIVATE FROM THE BUILDING TO THE METER AND PUBLIC FROM THE METER TO THE WATER MAIN.
6. ALL WATERLINE SHALL HAVE A MINIMUM 2' VERTICAL CLEARANCE FROM DRAINAGE STRUCTURES AND SEWER SERVICES.
7. THE LOCATION OF EXISTING WATER AND SANITARY SEWER UTILITIES ARE APPROXIMATE. FINAL ENGINEERING REVIEW AND COORDINATION MAY RESULT IN SOME MINOR ADJUSTMENTS TO THIS PLAN.
8. ALL WATERLINE SHALL BE INSTALLED WITH A MINIMUM COVER OF 42" UNLESS OTHERWISE NOTED OR EXPLICITLY APPROVED BY THE CITY ENGINEER.
9. FIRE HYDRANTS SHALL BE PLACED WITH STEAMER NOZZLE AT LEAST 3' BEHIND BACK OF CURB.
10. PRIVATE SANITARY SEWER SERVICES NEED A PLUMBING PERMIT AND MUST BE INSPECTED BY BUILDING INSPECTIONS PRIOR TO BURIAL.

LEGEND

-  PROP. 8" WATER LINE
-  PROP. FIRE HYDRANT
-  PROP. 8" SEWER LINE
-  PROP. CULVERT
-  EXIST. WATER MAIN
-  EXIST. SEWER MAIN



NO.	REVISION	BY	DATE

**REDINGER GROUP, LLC**  
 P.O. BOX 93204  
 SUITE 100  
 KELLER, TEXAS 75424  
 PHONE: (817) 933-5277  
 ENGINEERING FROM REGISTRATION NUMBER F-23259  
 PREPARED FOR:  
 FOUNDING DEVELOPMENT  
 6445 NORTHPOINT DRIVE  
 KELLER, TEXAS 75424  
 PHONE: (817) 460-5904

**PRELIMINARY UTILITY PLAN  
 WINDING CREEK  
 KELLER, TEXAS**

BENCHMARKS:  
 BM1  
 XXX  
 ELEV = XXX  
 BM2  
 XXX  
 ELEV = XXX

**PRELIMINARY  
 FOR REVIEW ONLY**  
 Not for Construction or Permit Purposes  
 CLAYTON L. REDINGER  
 P.E. No. 87497  
 DATE: 6/20/2022

Date: 6/20/2022  
 Drawn By: DSM  
 Reviewed By: CTR  
 Project: 1001-01

REDINGER GROUP PROJECT No. 1001-01 - SITE PLAN FOR WINDING CREEK - KELLER, TEXAS



Tree #	Size & Species
2060	10" HONEY LOCUST
2061	14" HONEY LOCUST
2062	6" MESQUITE
2063	12" HACKBERRY
2064	8" MAPLE
2065	6" HONEY LOCUST
2066	8" ELM
2067	10" HONEY LOCUST
2068	8" HONEY LOCUST
2069	10" HONEY LOCUST
2070	6" HONEY LOCUST
2071	6" HONEY LOCUST
2072	6" HONEY LOCUST
2073	10" HACKBERRY
2074	12" ELM
2075	12" MESQUITE
2077	6" ELM
2078	24" CEDAR
2079	18" ELM
2080	8" ELM
2081	10" CEDAR
2082	16" ELM
2083	20" ELM
2084	12" ELM
2085	10" ELM
2086	22" ELM
2087	18" ELM
2088	10" HONEY LOCUST
2089	12" SOAPBERRY
2090	10" ELM
2091	10" SOAPBERRY
2092	10" SOAPBERRY
2093	8" ELM
2094	10" WILLOW
2095	16" ELM
2096	8" SOAPBERRY
2097	12" ELM
2098	8" HONEY LOCUST
2099	24" COTTONWOOD
2100	8" SOAPBERRY
2101	12" ELM
2102	12" CEDAR
2103	30" BOIS D'ARC
2104	22" BOIS D'ARC

Tree #	Size & Species
2106	22" ELM
2107	14" ELM
2108	6" CEDAR
2109	6" ELM
2110	14" BOIS D'ARC
2111	6" ELM
2112	8" ELM
2113	10" ELM
2114	6" ELM
2115	30" OAK
2116	6" HACKBERRY
2117	12" ELM
2118	6" BOIS D'ARC
2119	6" HONEY LOCUST
2120	30" OAK
2121	14" OAK
2122	8" OAK
2123	12" OAK
2124	12" OAK
2125	14" ELM
2126	6" ELM
2127	18" OAK
2128	16" OAK
2129	22" OAK
2130	6" ELM
2131	14" OAK
2132	12" ELM
2133	12" OAK
2134	12" OAK
2135	18" OAK
2136	6" HONEY LOCUST
2137	20" ELM
2138	20" OAK
2139	10" OAK
2140	10" OAK
2141	22" OAK
2142	12" OAK
2143	6" HONEY LOCUST
2144	14" ELM
2145	6" ELM
2146	16" OAK
2147	16" ELM
2148	16" ELM
2149	14" ELM

Tree #	Size & Species
2150	16" OAK
2151	16" OAK
2152	24" ELM
2153	10" ELM
2154	12" ELM
2155	14" ELM
2156	12" ELM
2157	14" ELM
2158	14" OAK
2159	18" OAK
2160	20" OAK
2161	22" OAK
2162	12" OAK
2163	20" ELM
2164	16" OAK
2165	6" OAK
2166	14" OAK
2167	20" OAK
2168	12" OAK
2169	14" OAK
2170	20" OAK
2171	16" ELM
2172	10" ELM
2173	24" OAK
2174	20" OAK
2175	14" ELM
2176	12" ELM
2177	12" ELM
2178	22" ELM
2179	24" ELM
2180	16" OAK
2181	10" OAK
2182	10" OAK
2183	24" OAK
2184	10" OAK
2185	16" OAK
2186	14" OAK
2187	18" OAK
2188	16" OAK
2189	14" OAK
2190	14" OAK
2191	16" OAK
2192	12" OAK
2193	14" OAK

Tree #	Size & Species
2194	6" OAK
2195	18" OAK
2196	6" ELM
2197	16" ELM
2198	12" OAK
2199	14" OAK
2200	12" OAK
2201	10" CEDAR
2301	14" OAK
2302	14" OAK
2303	10" OAK
2304	20" OAK
2307	18" OAK
2308	14" OAK
2311	6" HACKBERRY
2312	6" HACKBERRY
2313	6" HACKBERRY
2314	10" ELM
2315	8" HACKBERRY
2316	10" ELM
2317	10" HACKBERRY
2318	6" HACKBERRY
2319	8" HACKBERRY
2320	8" ELM
2321	10" ELM
2322	24" ELM
2323	6" ELM
2324	8" HACKBERRY
2325	14" ELM
2326	6" ELM
2327	12" HOLLY
2332	12" HACKBERRY
2334	14" HACKBERRY
2335	12" HACKBERRY
2336	10" HACKBERRY
2337	8" HACKBERRY
2338	12" HACKBERRY
2339	16" OAK
2340	16" OAK
2341	16" OAK
2342	16" OAK
2343	16" OAK
2344	16" OAK
2345	16" OAK
2346	16" OAK
2347	14" OAK
2348	16" OAK
2349	16" OAK
2350	18" ELM
2351	22" OAK
2352	10" OAK

Tree #	Size & Species
2353	12" OAK
2354	14" OAK
2359	16" OAK
2360	16" OAK
2361	14" OAK
2362	14" OAK
2363	24" OAK
2364	18" OAK
2365	14" OAK
2366	6" ELM
2367	14" ELM
2368	18" ELM
2369	8" ELM
2370	6" ELM
2371	8" ELM
2372	20" OAK
2373	12" CEDAR
2374	6" ELM
2375	10" ELM
2376	18" OAK
2377	6" ELM
2378	8" ELM
2379	16" OAK
2380	8" HACKBERRY
2381	6" HACKBERRY
2382	12" OAK
2383	14" OAK
2384	6" OAK
2385	16" BOIS D'ARC
2386	20" OAK
2387	14" OAK
2388	20" OAK
2389	14" ELM
2390	20" ELM
2391	20" OAK
2392	6" ELM
2393	6" ELM
2394	6" ELM
2395	24" OAK
2396	6" ELM
2397	20" OAK
2398	14" OAK
2399	12" OAK
2400	10" OAK

Tree #	Size & Species
2401	18" OAK
2402	18" OAK
2403	18" OAK
2404	12" OAK
2405	14" OAK
2406	12" HACKBERRY
2407	12" OAK
2408	18" OAK
2409	14" OAK
2410	12" OAK
2411	8" BOIS D'ARC
2412	24" OAK
2413	28" OAK
2414	8" OAK
2415	8" OAK
2416	24" ELM
2417	14" OAK
2418	8" OAK
2419	8" OAK
2420	8" BOIS D'ARC
2421	6" ELM
2422	6" ELM
2423	6" HACKBERRY
2424	24" ELM
2425	12" CEDAR
2426	12" OAK
2427	12" OAK
2428	16" OAK
2429	8" HONEY LOCUST
2430	6" OAK
2431	8" OAK
2432	6" OAK
2433	8" OAK
2434	12" OAK
2435	10" OAK
2436	6" BOIS D'ARC
2437	22" OAK
2438	14" OAK
2439	6" ELM
2446	16" ELM
2447	22" OAK
2448	16" ELM
2449	8" CEDAR
2450	16" ELM

Tree #	Size & Species
2451	18" OAK
2452	18" OAK
2453	22" ELM
2454	16" ELM
2455	16" OAK
2456	18" OAK
2457	12" OAK
2458	12" OAK
2459	12" OAK
2460	14" OAK
2461	18" ELM
2462	18" ELM
2463	16" OAK
2464	14" OAK
2465	12" OAK
2466	12" OAK
2467	24" OAK
2468	6" BOIS D'ARC
2469	18" OAK
2470	14" ELM
2471	14" ELM
2472	14" ELM
2473	12" OAK
2474	18" ELM
2475	12" ELM
2476	12" ELM
2477	12" ELM
2478	14" OAK
2479	16" OAK
2480	20" OAK
2481	18" ELM
2482	12" OAK
2483	12" OAK
2484	12" OAK
2485	18" OAK
2486	14" OAK
2487	8" OAK
2488	12" OAK
2489	12" OAK
2490	14" OAK
2491	14" ELM
2492	16" OAK
2493	20" OAK
2494	16" OAK

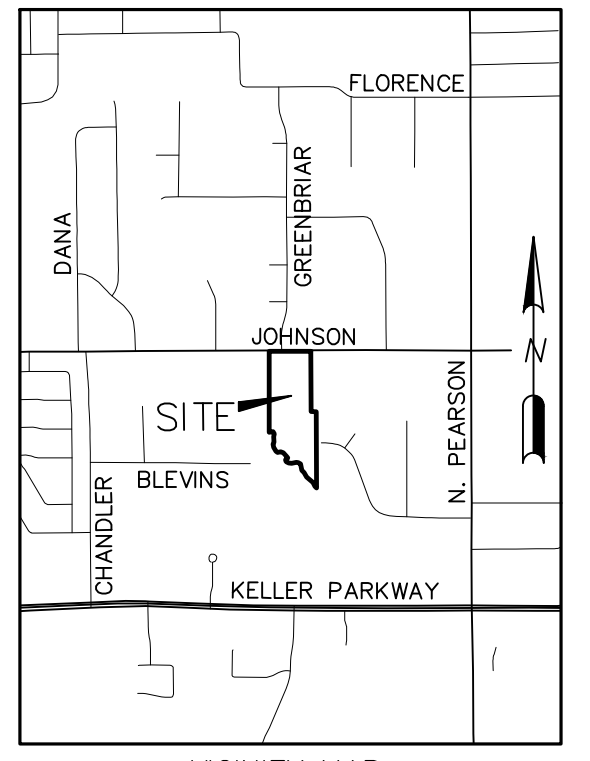
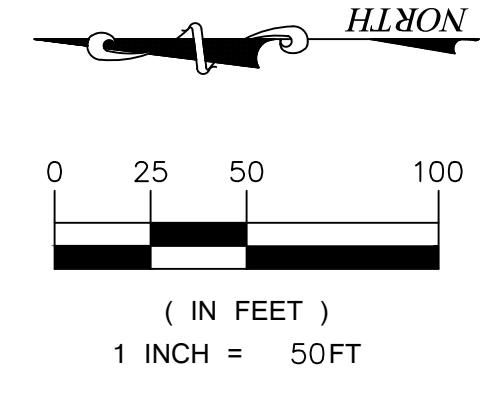
Tree #	Size & Species
2495	6" BOIS D'ARC
2496	16" OAK
2497	24" OAK
2498	10" OAK
2499	8" OAK
2500	12" OAK
2503	8" ELM
2504	12" ELM
2505	8" HACKBERRY
2506	22" HACKBERRY
2507	18" OAK
2509	24" OAK
2510	14" OAK
2516	14" OAK
2517	18" OAK
2518	10" OAK
2519	14" OAK
2520	16" OAK
2521	18" OAK
2522	10" OAK
2523	20" OAK
2524	24" OAK
2529	14" ELM
2530	12" ELM
2539	16" OAK
2540	20" OAK
2541	14" OAK
2542	10" OAK
2543	24" OAK
2544	10" OAK
2545	14" OAK
2546	16" OAK
2547	20" OAK
2548	10" CEDAR
2549	14" OAK
2550	6" ELM
2551	18" OAK
2552	20" ELM
2556	14" OAK
2557	6" ELM
2558	10" OAK
2559	26" OAK
2560	18" OAK
2565	18" OAK

Tree #	Size & Species
2566	6" ELM
2567	6" OAK
2568	6" OAK
2569	6" OAK
2570	6" OAK
2571	6" OAK
2572	6" OAK
2573	6" OAK
2574	6" OAK
2575	6" OAK
2576	6" OAK
2577	6" OAK
2578	6" OAK
2579	10" OAK
2580	8" OAK
2581	20" OAK
2582	10" ELM
2583	10" ELM
2584	10" ELM
2585	16" OAK
2586	14" ELM
2587	12" ELM
2588	14" OAK
2589	14" OAK
2590	18" OAK
2591	16" ELM
2592	6" BOIS D'ARC
2593	16" OAK
2594	18" OAK
2595	20" OAK
2596	12" ELM
2597	8" ELM
2598	12" ELM
2599	6" OAK
2600	6" OAK
2601	12" OAK
2602	6" OAK
2603	8" OAK
2604	16" BOIS D'ARC
2605	18" OAK
2606	8" HACKBERRY
2607	12" HACKBERRY
2608	8" OAK
2609	10" OAK

Tree #	Size & Species
2610	12" BOIS D'ARC
2611	8" OAK
2612	10" ELM
2613	10" ELM
2614	6" OAK
2615	24" BOIS D'ARC
2616	8" HACKBERRY
2617	6" ELM
2618	6" ELM
2619	6" ELM
2620	6" CEDAR
2621	14" HACKBERRY
2622	6" ELM
2623	10" ELM
2624	6" OAK
2625	8" ELM
2626	16" ELM
2627	8" ELM
2628	8" ELM
2629	6" ELM
2630	6" ELM
2631	14" BOIS D'ARC
2632	6" ELM
2633	16" ELM
2634	18" ELM
2635	6" ELM
2636	12" ELM
2637	8" ELM
2638	8" ELM
2639	6" ELM
2640	6" HACKBERRY
2641	6" ELM
2642	8" ELM
2643	8" ELM
2644	18" ELM
2645	8" ELM
2646	6" ELM
2647	14" ELM
2648	10" ELM
2649	12" ELM
2650	12" ELM
2651	6" ELM
2652	6" ELM
2653	6" ELM

Tree #	Size & Species
2654	6" ELM
2655	6" ELM
2656	20" ELM
2657	6" HACKBERRY
2658	12" HACKBERRY
2659	8" ELM
2660	8" HACKBERRY
2661	10" OAK
2662	12" ELM
2663	8" ELM
2664	8" ELM
2665	10" ELM
2666	10" CEDAR
2667	24" OAK
2668	8" HACKBERRY
2669	12" HACKBERRY
2670	22" OAK
2671	8" ELM
2672	8" HACKBERRY
2673	36" OAK
2674	30" ELM
2675	6" ELM
2676	8" ELM
2677	8" BOIS D'ARC
2678	12" OAK
2679	10" ELM
2680	6" HACKBERRY
2681	10" ELM
2682	12" ELM
2683	6" ELM
2684	6" ELM
2685	12" ELM
2686	18" OAK
2687	12" ELM</





VICINITY MAP  
SCALE: 1" = 2000'

NO.	REVISION	BY	DATE

**REDINGER GROUP, LLC**  
 P.O. BOX 93206  
 SUITE 100  
 DALLAS, TEXAS 75293-0206  
 PHONE: (817) 233-2277  
 ENGINEERING PERMITS REGISTRATION NUMBER: F-23259  
 PREPARED FOR:  
 FOUNDERS DEVELOPMENT  
 6445 NORTHPOINT DRIVE  
 KELLER, TEXAS 75248  
 PHONE: (817) 462-5904

**AERIAL OVERLAY  
 WINDING CREEK  
 KELLER, TEXAS**

**BENCHMARKS:**  
 BM1  
 XXX  
 ELEV = XXX  
 BM2  
 XXX  
 ELEV = XXX

**PRELIMINARY  
 FOR REVIEW ONLY**  
 Not for Construction or Permit Purposes  
 Engineer: **CLAYTON L. REDINGER**  
 P.E. No. **87497** Exp. Date **6/20/2022**

Date: 6/20/2022  
 Drawn By: DSM  
 Reviewed By: CTR  
 Project: 1001-01

**SHEET**  
 6

CITY CASE NO. ----

REDINGER GROUP PROJECT No. 1001-01 - SITE PLAN FOR WINDING CREEK - KELLER, TEXAS