

4. Screening.

- a. Adjacent Residential Properties. Screening to all immediately adjacent residential properties shall be achieved through a thirty-foot (30') landscape buffer with living screen (see photographs). This buffer shall be as shown on the Landscape Plan, and shall have three-inch (3") caliper large canopy trees planted thirty feet (30') on center- except where existing trees are located. In addition, an 8' high masonry screening wall shall be required along the western and southern boundaries of Zoning Area B, as indicated on the landscape plan. A 6' cedar fence, on metal posts with a cap, will be constructed to screen the elevated fuel tanks.
- b. No additional landscaping shall be required along the western boundary of Zoning Area A.
- c. Due to existing heavy vegetation, no additional plantings shall be required in the landscape buffer, along the entire northern and eastern (creek) boundary.
- d. Dumpsters: The trash dumpster shall be accessible to a pedestrian and screened with a permanent enclosure, in accordance with the UDC.
- e. No screening walls shall be required along the northern and eastern property lines, within the creek/ flood plain area, and the screening wall along the western property line shall terminate at the regulatory floodplain and not extend into the regulatory floodplain.
- f. All other screening standards in the Unified Development Code shall apply.

5. Signs

- a. Signs shall follow the standards of the Keller Unified Development Code of Non-Residential Districts at the time of sign permit application.

6. Lighting

- a. The site shall meet the Lighting standards set forth in the Keller Unified Development Code.
- b. Site and building mounted lighting shall be as shown on the "Light Intensity Survey" exhibit.

7. Tree Preservation

- a. Trees shown in blue, on the "Tree Survey" exhibit, shall be preserved.
- c. All other tree preservation requirements set in the Keller Unified Development Code shall apply.

8. Off-street Parking

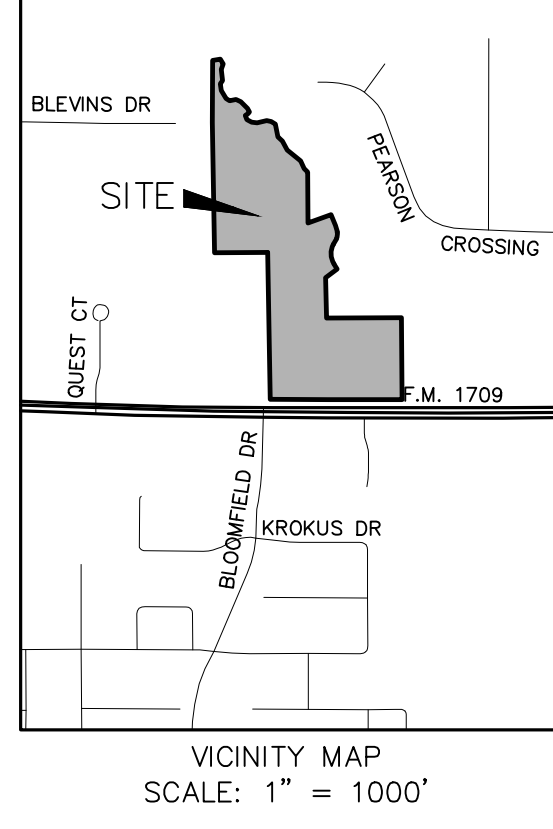
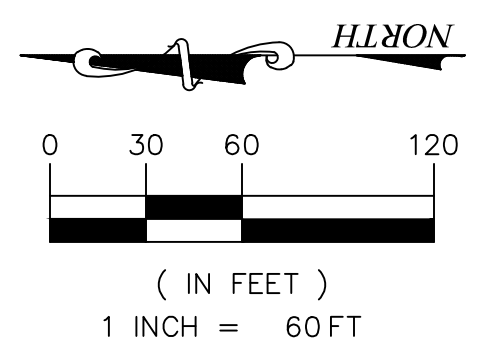
- a. All parking standards from the Keller Unified Development Code shall apply.

9. Hours of Operation

- a.** The facility will operate between the hours of 6:00 am, and 7:00 pm.

10. Sidewalks/ Trails

- a. There shall be a 6' concrete sidewalk built along Keller Parkway, from the existing sidewalk to proposed trail, as shown on the Site Plan, which shall be built in Phase 1.
- b. A 10' Concrete Trail shall be built along the eastern boundary of the site, located as shown on the Site Plan, subject to alignment revision depending on the flood study, shall be built in Phase 2.



- LEGEND**
- EXISTING CONCRETE PAVEMENT TO REMAIN IN PLACE
 - EXISTING PAVERS TO REMAIN IN PLACE
 - PROPOSED FIRE LANE
7" 3,600 PSI CONCRETE W/ #4 BARS 18" O.C.E.W. ON 8" LIME OR CEMENT TREATED SUBGRADE
 - PROPOSED BUILDING/STRUCTURE
 - PROPOSED CONCRETE PAVEMENT
 - PROPOSED ASPHALT PAVEMENT
 - PROPOSED SIDEWALK
 - OPEN SPACE

- NOTES**
- 15' LANDSCAPE BUFFER IS PROPOSED FOR 300' ALONG THE SOUTHWEST PORTION OF THE SUBJECT PROPERTY AS SHOWN.
 - NO ADDITIONAL LANDSCAPING TO BE REQUIRED WITHIN THE 15' LANDSCAPE BUFFER FOR 300' ALONG THE SOUTHWEST PORTION OF THE SUBJECT PROPERTY.
 - NO LANDSCAPING TO BE REQUIRED WITHIN THE LANDSCAPE BUFFERS ALONG THE EAST AND NORTH PROPERTY LINES OF THE SUBJECT PROPERTY.
 - MASONRY SCREENING WALL SHALL NOT BE REQUIRED ALONG THE NORTH AND EAST PROPERTY LINES AND PORTIONS OF THE WEST PROPERTY WHICH ARE CONTAINED WITH A FLOODPLAIN.
 - PHASE 2 CONSTRUCTION WILL BE COMPLETED AFTER APPROVAL BY FEMA OF RECLAMATION OF THE EXISTING FLOODPLAIN.
 - 10' CONCRETE TRAIL SHALL BE COMPLETED WITH THE CONSTRUCTION OF PHASE 2. ALIGNMENT OF TRAIL MAY VARY DEPENDING ON FLOODPLAIN STUDY.
 - OPEN SPACE SHOWN TO CONFIRM THAT THE SITE MEETS OR EXCEEDS 15% OPEN SPACE PER UDC SECTION 8.27 (PD OPEN SPACE REQUIREMENTS).
 - FIRE LANE'S SHALL COMPLY WITH THE SECTION 4-135 OF ADOPTED CITY CODE.
 - A PHOTOMETRIC PLAN SHALL BE SUBMITTED AND APPROVED BY THE CITY PRIOR TO CONSTRUCTION OF SITE LIGHTING FOR PHASE 2 IMPROVEMENTS.

SITE DATA SUMMARY

| | |
|---|------------|
| TOTAL SITE AREA | 763,035 SF |
| OPEN SPACE AREA (AS SHOWN) | 344,610 SF |
| TOTAL BUILDING AREA | 45.2 % |
| RETAIL AREA | 15,146 SF |
| (RETAIL AREA INCLUDES ALL AREA ATTACHED TO THE MAIN BUILDING INCLUDING RETAIL CENTER, GARDEN CENTER, GREENHOUSE PLUS ADDITIONS A & B) | 15,146 SF |
| PHASE 1 PARKING | |
| RETAIL: (1/200 SF BLDG AREA) | 76 SPACES |
| PROVIDED PARKING SPACES | 26 SPACES* |
| PROVIDED ACCESSIBLE SPACES | 2 SPACES |
| *TEMPORARY OVERFLOW PARKING PROVIDED | |
| PHASE 2 PARKING | |
| PICKLE BALL COURTS (X2) | 8 SPACES |
| [4 SPACES PER COURT] | |
| PARKING PROVIDED | 68 SPACES |
| TOTAL PARKING | |
| PARKING REQUIRED | 84 SPACES |
| PARKING PROVIDED | 96 SPACES |

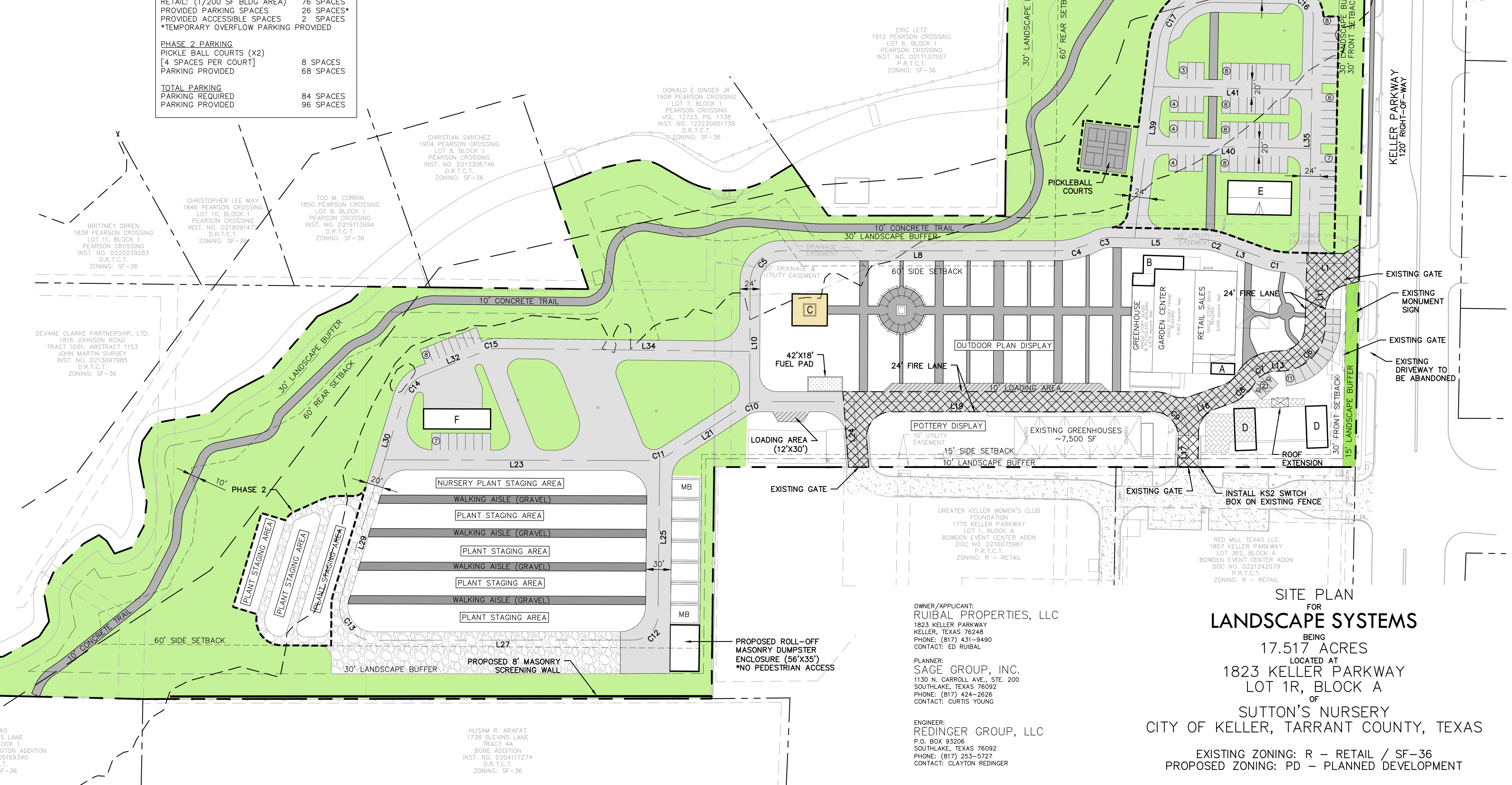
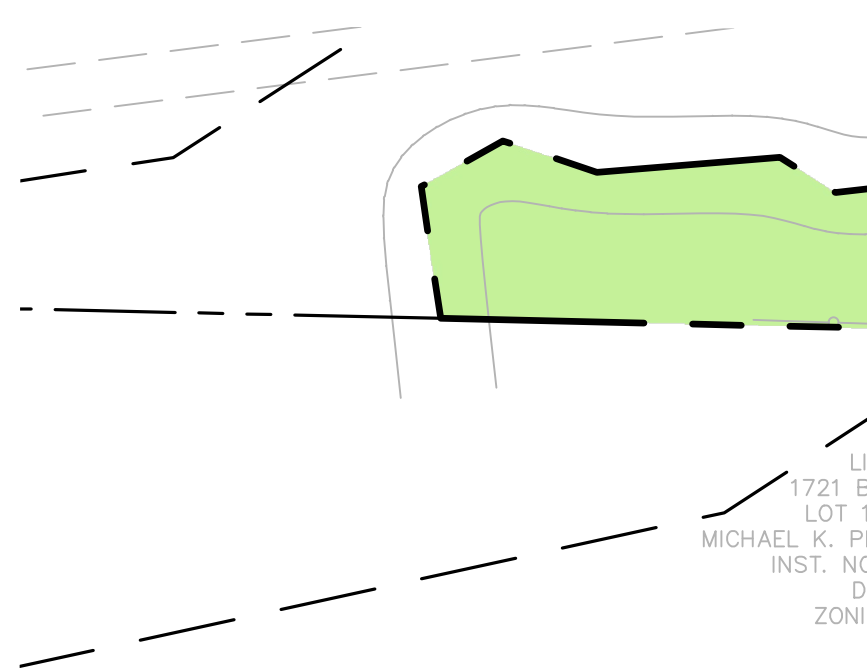
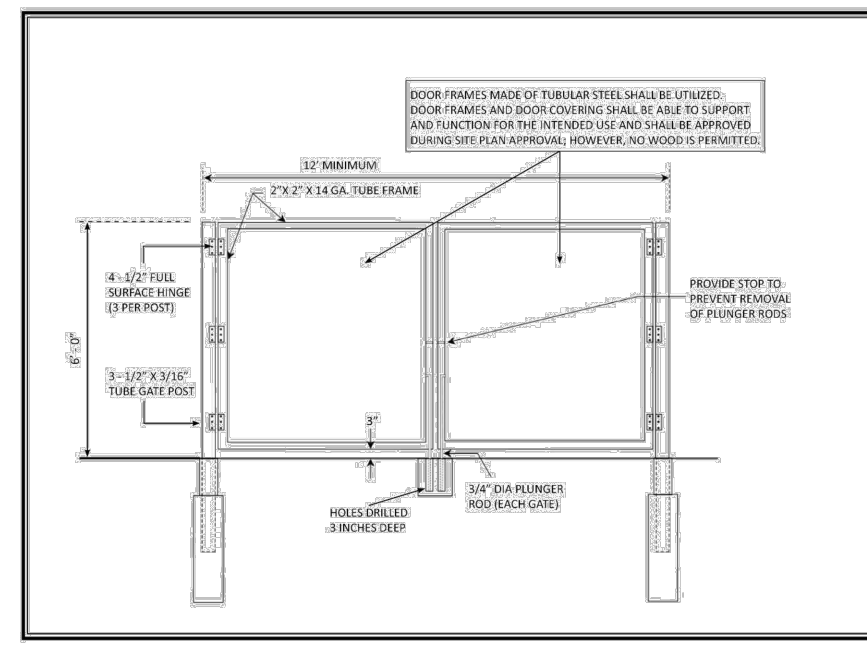
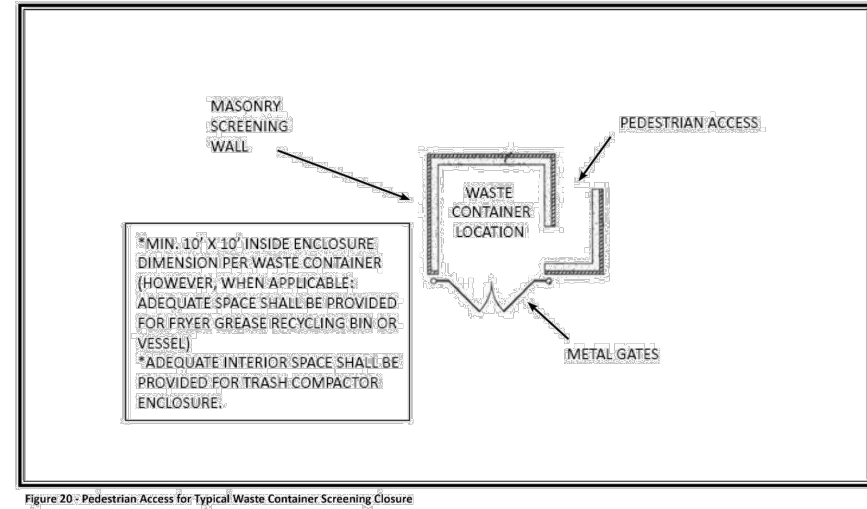
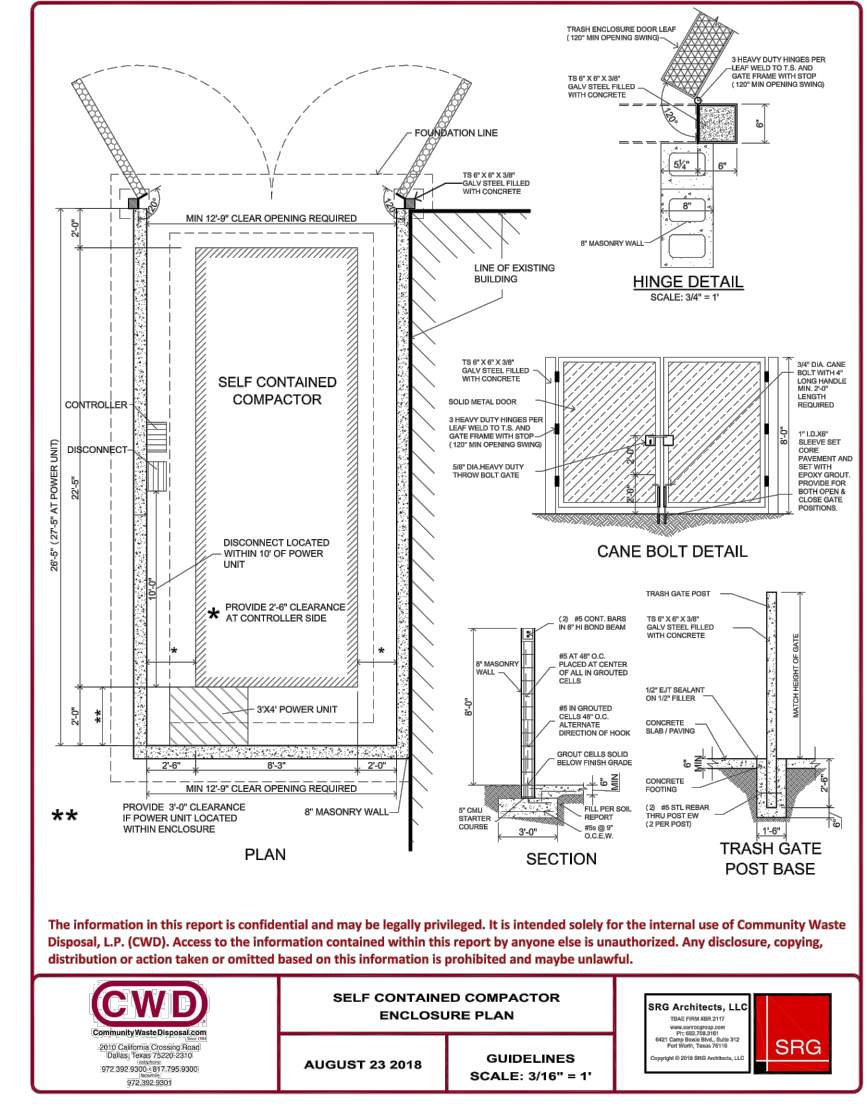
LINE TABLE

| LINE # | LENGTH | BEARING |
|--------|---------|-------------|
| L1 | 66.85" | N00°05'35"E |
| L3 | 46.17" | N19°02'22"E |
| L5 | 105.09" | N00°05'35"E |
| L8 | 324.93" | N01°01'05"W |
| L10 | 144.25" | S89°13'39"W |
| L11 | 76.01" | N89°23'37"W |
| L13 | 7.42" | N02°55'58"W |
| L16 | 62.02" | N20°13'04"W |
| L17 | 34.61" | S89°26'12"E |
| L19 | 468.61" | N01°01'05"W |
| L21 | 103.94" | N34°03'21"W |
| L23 | 315.74" | N00°51'38"W |
| L24 | 78.75" | N84°37'58"E |
| L25 | 186.40" | S89°37'41"W |
| L27 | 309.88" | N01°03'29"W |
| L29 | 139.12" | S74°07'13"E |
| L30 | 110.21" | S74°07'13"E |
| L32 | 78.37" | S22°28'03"E |
| L34 | 299.76" | S00°21'13"E |
| L35 | 292.83" | S89°54'25"E |
| L37 | 87.83" | N00°05'35"E |
| L39 | 235.40" | N83°54'44"W |
| L40 | 196.41" | N00°05'35"E |
| L41 | 189.06" | N00°05'35"E |

CURVE TABLE

| CURVE # | LENGTH | RADIUS | DELTA | CH. BEARING | CH. LENGTH |
|---------|--------|---------|------------|-------------|------------|
| C1 | 37.04' | 112.00' | 18°56'47" | N09°33'58"E | 36.87' |
| C2 | 29.10' | 88.00' | 18°56'47" | N09°33'58"E | 28.97' |
| C3 | 20.04' | 42.00' | 27°20'39" | N13°34'45"W | 19.85' |
| C4 | 51.28' | 112.00' | 26°13'59" | N14°08'05"W | 50.83' |
| C5 | 59.53' | 38.00' | 89°45'16" | N45°53'43"W | 53.62' |
| C6 | 63.38' | 42.00' | 86°27'39" | N46°09'48"W | 57.53' |
| C7 | 42.51' | 42.00' | 57°59'05" | N31°55'31"W | 40.71' |
| C8 | 29.83' | 42.00' | 40°42'00" | N40°34'04"W | 29.21' |
| C9 | 67.13' | 42.00' | 91°34'53" | N44°46'22"E | 60.21' |
| C10 | 24.22' | 42.00' | 33°02'16" | N17°32'13"W | 23.88' |
| C11 | 24.33' | 42.00' | 33°11'43" | N17°27'29"W | 23.99' |
| C12 | 46.76' | 30.00' | 89°18'50" | N45°42'54"W | 42.17' |
| C13 | 74.66' | 40.00' | 106°56'17" | N52°24'39"E | 64.28' |
| C14 | 37.86' | 42.00' | 51°39'09" | S48°17'38"E | 36.59' |
| C15 | 16.21' | 42.00' | 22°06'51" | S11°24'38"E | 16.11' |
| C16 | 43.98' | 28.00' | 90°00'00" | N45°05'35"E | 39.60' |
| C17 | 99.70' | 68.00' | 84°00'19" | N41°54'34"W | 91.01' |

- PROPOSED BUILDING/ADDITION DESCRIPTIONS**
- A. 188 SQFT BUILDING ADDITION
 - B. 1,311 SQFT BUILDING ADDITION
 - C. 1,596 SQFT OPEN AIR PAVILION WITH 225 SQFT COURTESY LOUNGE
 - D. 2 - 25' X 50' SHADE STRUCTURES (1,250 SF EACH)
 - E. 40' X 76' SHADE STRUCTURE (3,040 SF)
 - F. 24' X 80' CANOPY COVER / EQUIPMENT PARKING (1,920 SF)



OWNER/APPLICANT:
RUIBAL PROPERTIES, LLC
 1823 KELLER PARKWAY
 KELLER, TEXAS 76248
 PHONE: (817) 431-9490
 CONTACT: ED RUIBAL

PLANNER:
SAGE GROUP, INC.
 1130 N. CARROLL AVE., STE. 200
 SOUTHLAKE, TEXAS 76092
 PHONE: (817) 424-2626
 CONTACT: CURTIS YOUNG

ENGINEER:
REDINGER GROUP, LLC
 P.O. BOX 93206
 SOUTHLAKE, TEXAS 76092
 PHONE: (817) 253-5727
 CONTACT: CLAYTON REDINGER

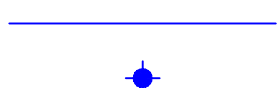




SITE PLAN FOR LANDSCAPE SYSTEMS
 BEING 17.517 ACRES
 LOCATED AT
 1823 KELLER PARKWAY
 LOT 1R, BLOCK A
 OF
SUTTON'S NURSERY
 CITY OF KELLER, TARRANT COUNTY, TEXAS

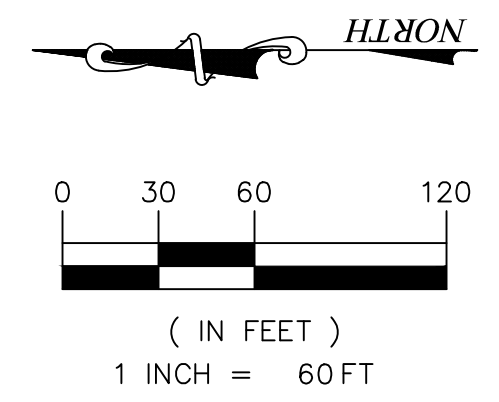
EXISTING ZONING: R - RETAIL / SF-36
 PROPOSED ZONING: PD - PLANNED DEVELOPMENT

NOTES:

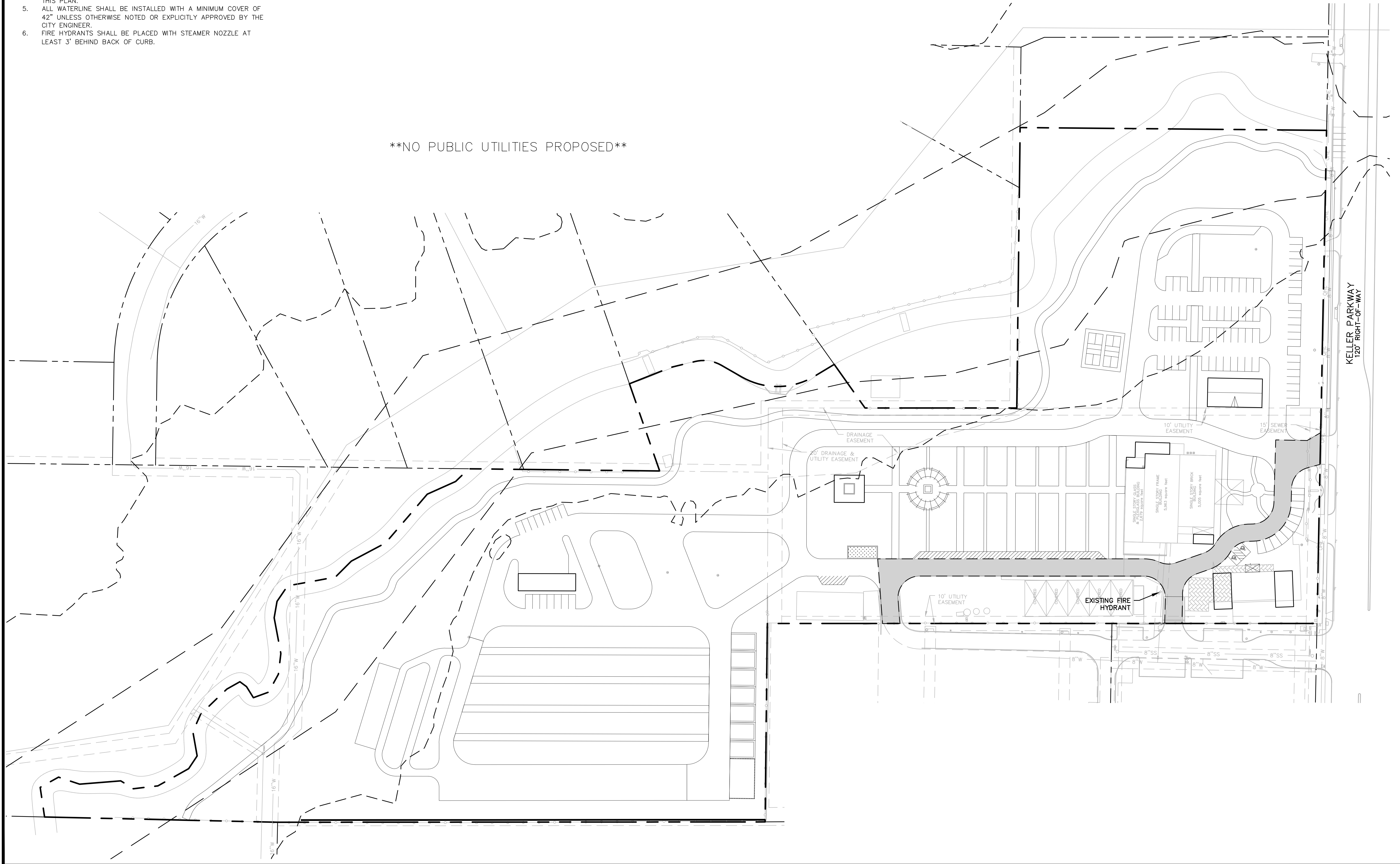
1. ALL CONSTRUCTION SHALL BE IN CONFORMANCE WITH THE CITY OF KELLER STANDARDS FOR PUBLIC WORKS CONSTRUCTION.
2. ALL WATER SERVICES ARE PRIVATE FROM THE BUILDING TO THE METER AND PUBLIC FROM THE METER TO THE WATER MAIN.
3. ALL WATERLINE SHALL HAVE A MINIMUM 2' VERTICAL CLEARANCE FROM DRAINAGE STRUCTURES AND SEWER SERVICES.
4. THE LOCATION OF EXISTING WATER AND SANITARY SEWER UTILITIES ARE APPROXIMATE. FINAL ENGINEERING REVIEW AND COORDINATION MAY RESULT IN SOME MINOR ADJUSTMENTS TO THIS PLAN.
5. ALL WATERLINE SHALL BE INSTALLED WITH A MINIMUM COVER OF 42" UNLESS OTHERWISE NOTED OR EXPLICITLY APPROVED BY THE CITY ENGINEER.
6. FIRE HYDRANTS SHALL BE PLACED WITH STEAMER NOZZLE AT LEAST 3' BEHIND BACK OF CURB.

LEGEND

-  PROP. 8" WATER LINE
-  PROP. FIRE HYDRANT
-  EXIST. WATER MAIN
-  EXIST. SEWER MAIN
-  FIRE LANE



****NO PUBLIC UTILITIES PROPOSED****



REDINGER GROUP, LLC
 P.O. BOX 93206
 SUITE 100
 KELLER, TEXAS 75248
 PHONE: (817) 233-2727
 FAX: (817) 233-2727
 ENGINEERING REGISTRATION NUMBER: 7-23329
 PREPARED FOR: RURAL PROPERTIES, LLC
 KELLER, TEXAS 75248
 CONTACT: BO DUBRAL

**PRELIMINARY UTILITY PLAN
 LANDSCAPE SYSTEMS
 KELLER, TEXAS**

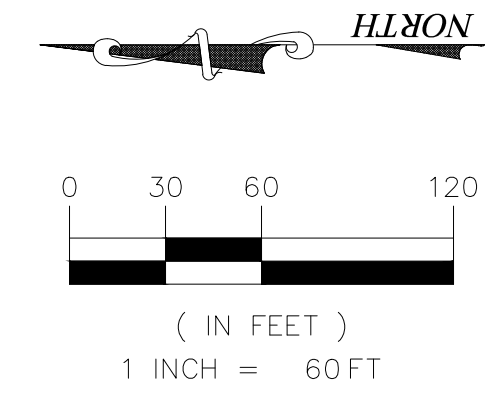
BENCHMARKS:

BM1
 XXX
 ELEV = XXX
 BM2
 XXX
 ELEV = XXX

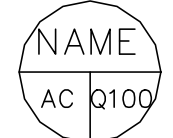




**PRELIMINARY
 FOR REVIEW ONLY**
 Not for Construction or Permit Purposes
 Drawn By: DSM
 Reviewed By: CTR
 Project: 1012-01

Drawn By: DSM
 Reviewed By: CTR
 Project: 1012-01

SHEET
 2



LEGEND

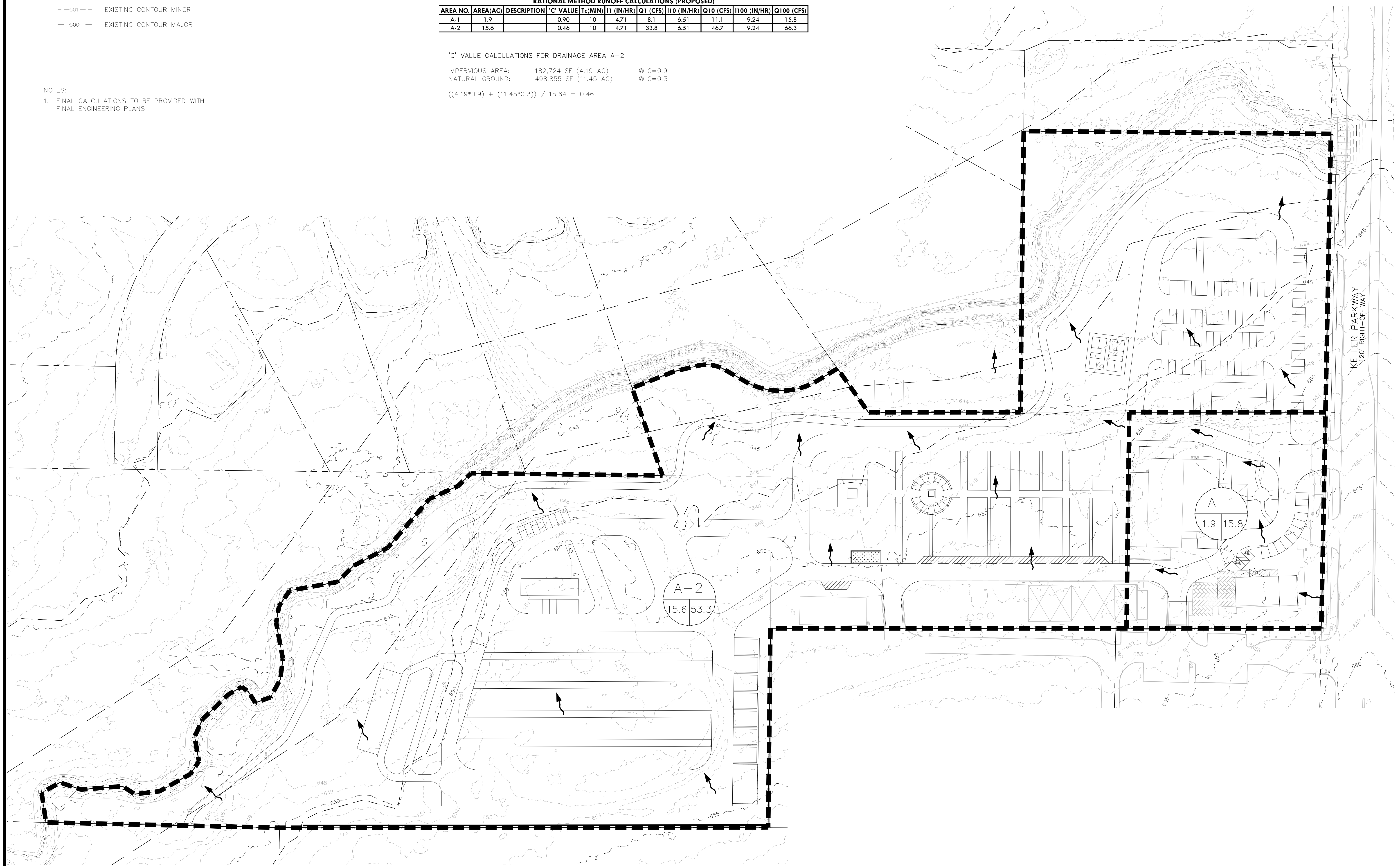
-  DRAINAGE AREA LABEL
-  FLOW ARROW (POST-PROJECT)
-  DRAINAGE DIVIDE
-  EXISTING CONTOUR MINOR
-  EXISTING CONTOUR MAJOR

RATIONAL METHOD RUNOFF CALCULATIONS (PROPOSED)

| AREA NO. | AREA(AC) | DESCRIPTION | 'C' VALUE | Tc(MIN) | I1 (IN/HR) | Q1 (CFS) | I10 (IN/HR) | Q10 (CFS) | I100 (IN/HR) | Q100 (CFS) |
|----------|----------|-------------|-----------|---------|------------|----------|-------------|-----------|--------------|------------|
| A-1 | 1.9 | | 0.90 | 10 | 4.71 | 8.1 | 6.51 | 11.1 | 9.24 | 15.8 |
| A-2 | 15.6 | | 0.46 | 10 | 4.71 | 33.8 | 6.51 | 46.7 | 9.24 | 66.3 |

'C' VALUE CALCULATIONS FOR DRAINAGE AREA A-2
 IMPERVIOUS AREA: 182,724 SF (4.19 AC) @ C=0.9
 NATURAL GROUND: 498,855 SF (11.45 AC) @ C=0.3
 $((4.19 \times 0.9) + (11.45 \times 0.3)) / 15.64 = 0.46$

NOTES:
 1. FINAL CALCULATIONS TO BE PROVIDED WITH FINAL ENGINEERING PLANS



REDINGER GROUP, LLC
 P.O. BOX 93006
 SUITE 100
 KELLER, TEXAS 76248
 PHONE: (817) 933-2727
 FAX: (817) 933-2727
 ENGINEERING FROM REGISTRATION NUMBER F-23259
 PREPARED FOR: RURAL PROPERTIES, LLC
 1012-01
 KELLER, TEXAS 76248
 CONTACT: BO@RUBAL

BY: _____
 DATE: _____
 NO. REVISION: _____

PRELIMINARY GRADING & DRAINAGE PLAN
LANDSCAPE SYSTEMS
KELLER, TEXAS

PRELIMINARY FOR REVIEW ONLY
 Not for Construction or Permit Purposes
 Drawn By: DSM
 Reviewed By: CTR
 Project: 1012-01

BENCHMARKS:
 BM1
 XXX
 ELEV = XXX
 BM2
 XXX
 ELEV = XXX

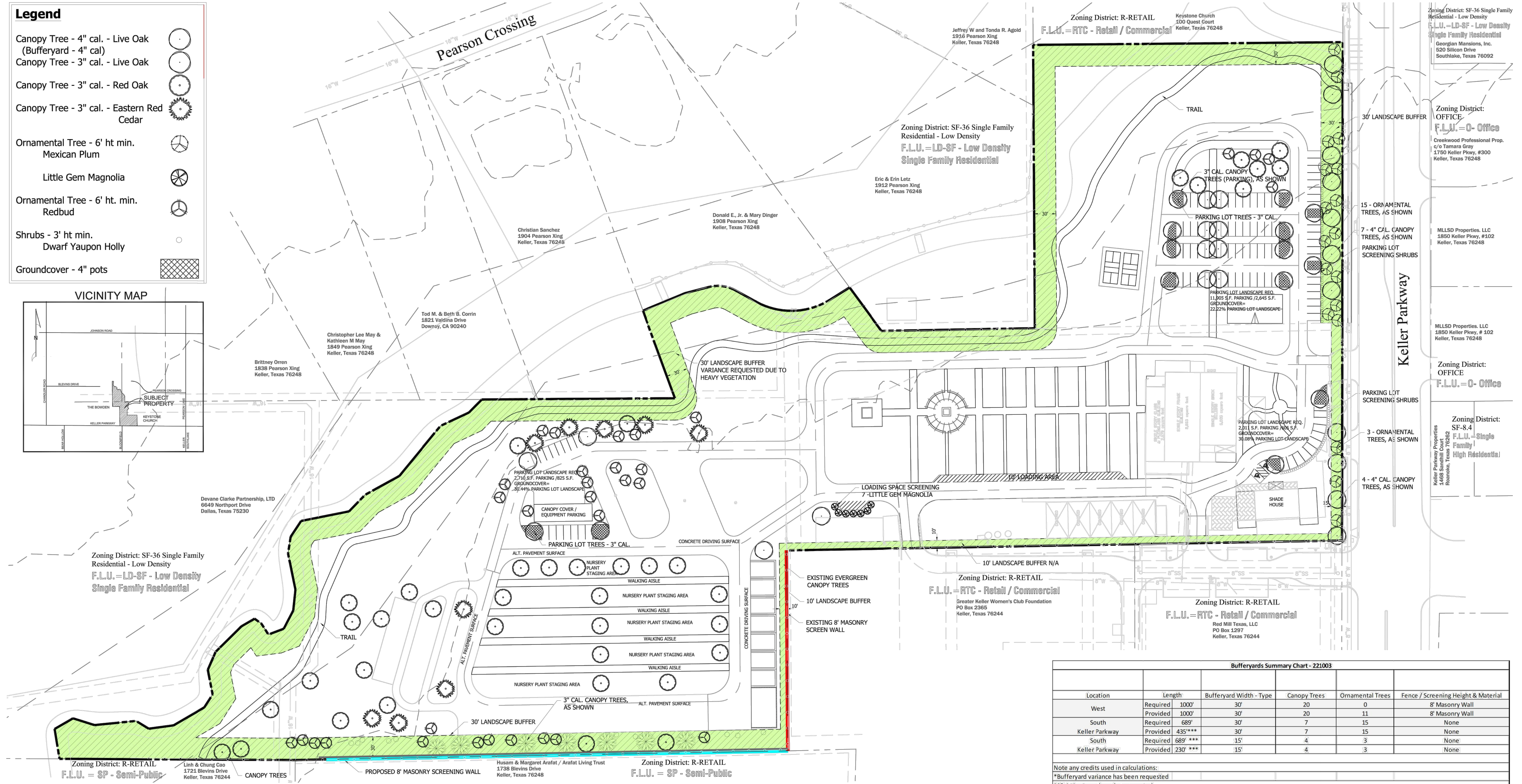
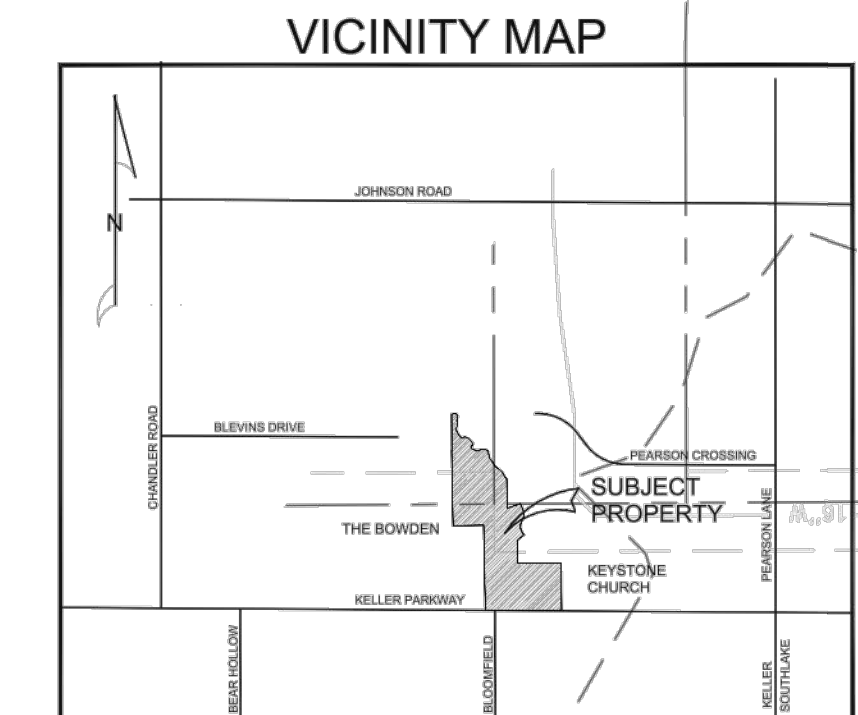
Drawn By: DSM
 Reviewed By: CTR
 Project: 1012-01

CLAYTON T. REDINGER
 P.E. No. 97487 Date: 4/29/2025

SHEET
3

REDINGER GROUP PROJECT No. 1012-01 - SITE PLAN FOR LANDSCAPE SYSTEMS - KELLER, TEXAS

- Legend**
- Canopy Tree - 4" cal. - Live Oak (Bufferyard - 4" cal)
 - Canopy Tree - 3" cal. - Live Oak
 - Canopy Tree - 3" cal. - Red Oak
 - Canopy Tree - 3" cal. - Eastern Red Cedar
 - Ornamental Tree - 6' ht min. Mexican Plum
 - Little Gem Magnolia
 - Ornamental Tree - 6' ht. min. Redbud
 - Shrubs - 3' ht min. Dwarf Yaupon Holly
 - Groundcover - 4" pots



Bufferyards Summary Chart - 221003

| Location | Length | Bufferyard Width - Type | Canopy Trees | Ornamental Trees | Fence / Screening Height & Material | |
|----------------|----------|-------------------------|--------------|------------------|-------------------------------------|-----------------|
| West | Required | 1000' | 30' | 20 | 0 | 8' Masonry Wall |
| | Provided | 1000' | 30' | 20 | 11 | 8' Masonry Wall |
| South | Required | 689' | 30' | 7 | 15 | None |
| | Provided | 435'*** | 30' | 7 | 15 | None |
| Keller Parkway | Required | 689' *** | 15' | 4 | 3 | None |
| | Provided | 230' *** | 15' | 4 | 3 | None |

Note: any credits used in calculations:
 *Bufferyard variance has been requested
 **Existing trees have been counted.
 ***Bufferyard length has been reduced to accommodate the shown drives.

General Streetscape Standard Notes:

- Specific plant types and locations are subject to review by the Landscape Administrator during the building permit application process.
- A canopy tree planted on the site must be a minimum of 3" in caliper, unless noted.
- Ornamental trees are required to be a minimum of 6' in height when planted.
- All plant materials are to be maintained in perpetuity.

Planner: SAGE GROUP, INC.
 Master Planning
 Urban Design
 Architecture
 Landscape Architecture
 1130 N. Carroll Ave., Ste. 200
 Southlake, Texas 76092
 TEL: 817-424-2626

Owner: Ruibal Properties, Inc.
 1823 Keller Parkway
 Keller, Texas 76248
 Phone: 817-431-9490
 Contact: Ed Ruibal

Engineer: Redinger Group, LLC
 P.O. Box 93206
 Southlake, Texas 76092
 817-253-5727
 Attn: Clayton Redinger, P.E.

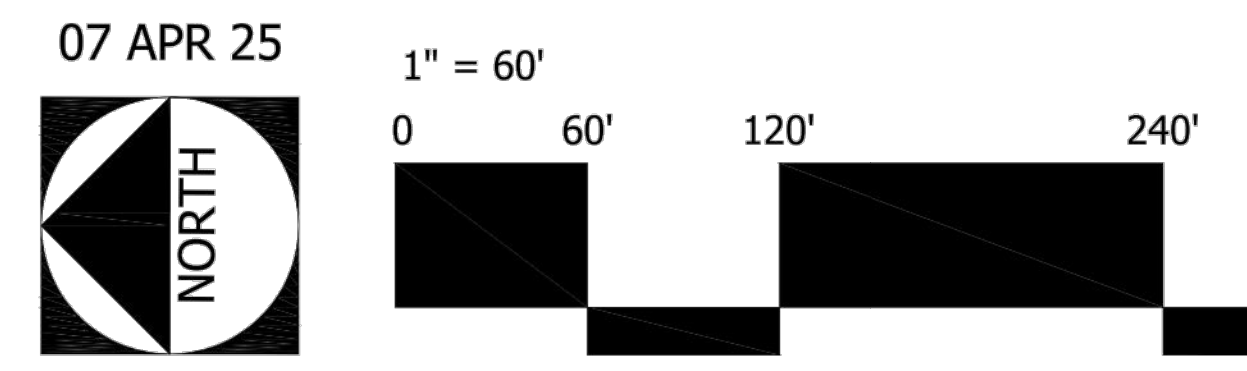
PARKING LOT PLANTING

| PARKING LOT TREES - 3" cal (1 PER ISLAND) | REQUIRED | PROVIDED |
|---|----------|----------|
| | 17 | 17 |

SCREENING SHRUBS ARE PROVIDED AT THE PROPOSED PARKING LOT - 3' HT MIN.

PARKING LOT AREA 15% MIN. LANDSCAPE REQUIRED.

PARKING LOT AREA = 19,290 S.F. / LANDSCAPE AREA = 5,233 S.F. = 27.13% COVERAGE



Landscape Plan

Landscape Systems

Keller, Tarrant County, Texas

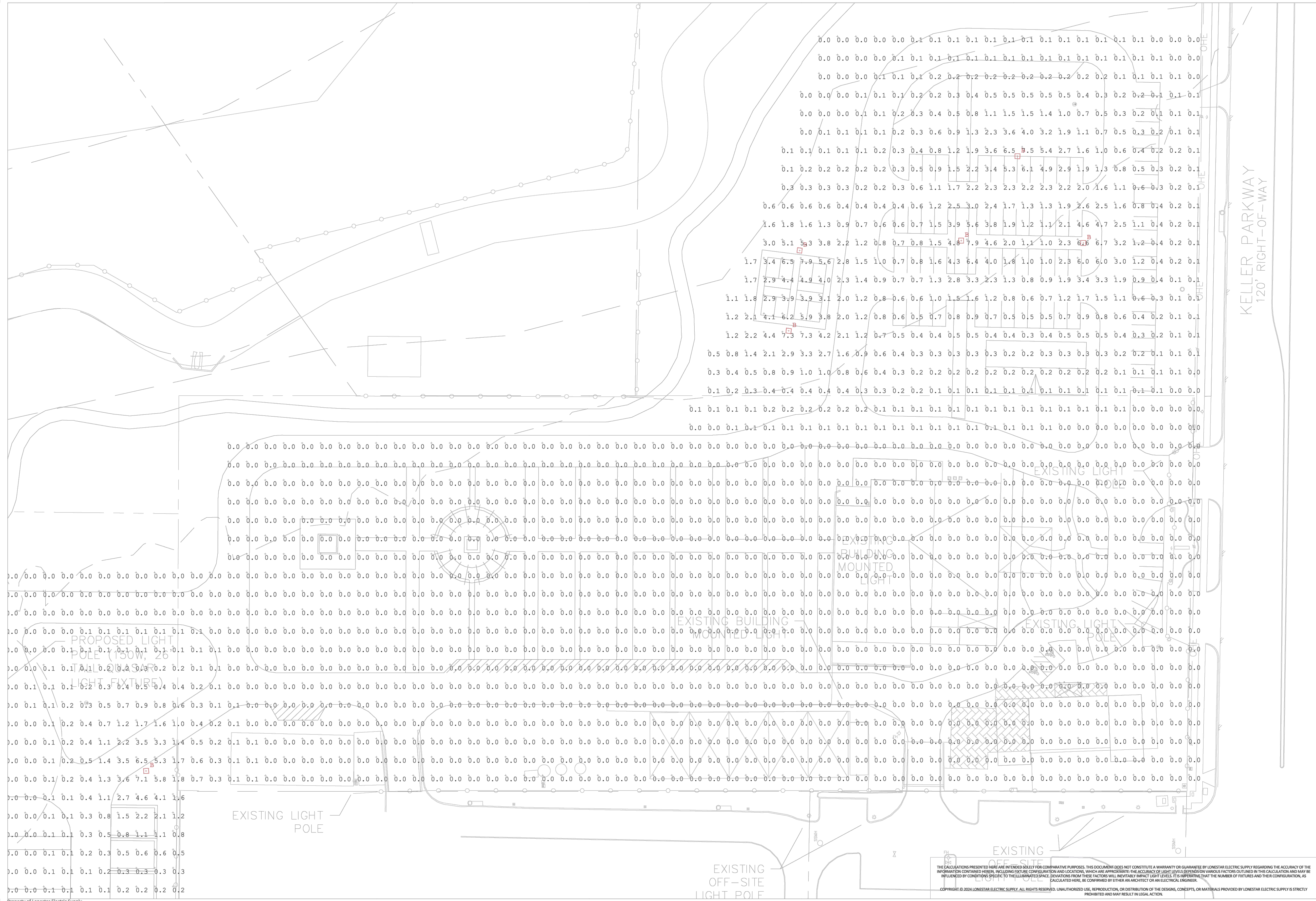
General Notes

Legend

| Rev | Date | Description |
|-----|------|-------------|
| - | - | - |
| - | - | - |

Project Name:
Garden Center
Location:
Dallas, TX
Project Number:
N.A.
Created By:
J. Velazquez
Scale:
Scale
Date: 01/21/2024
Page: -

SITE
PHOTOMETRICS

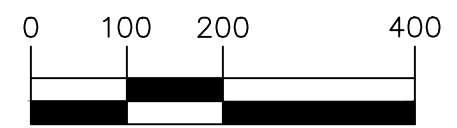
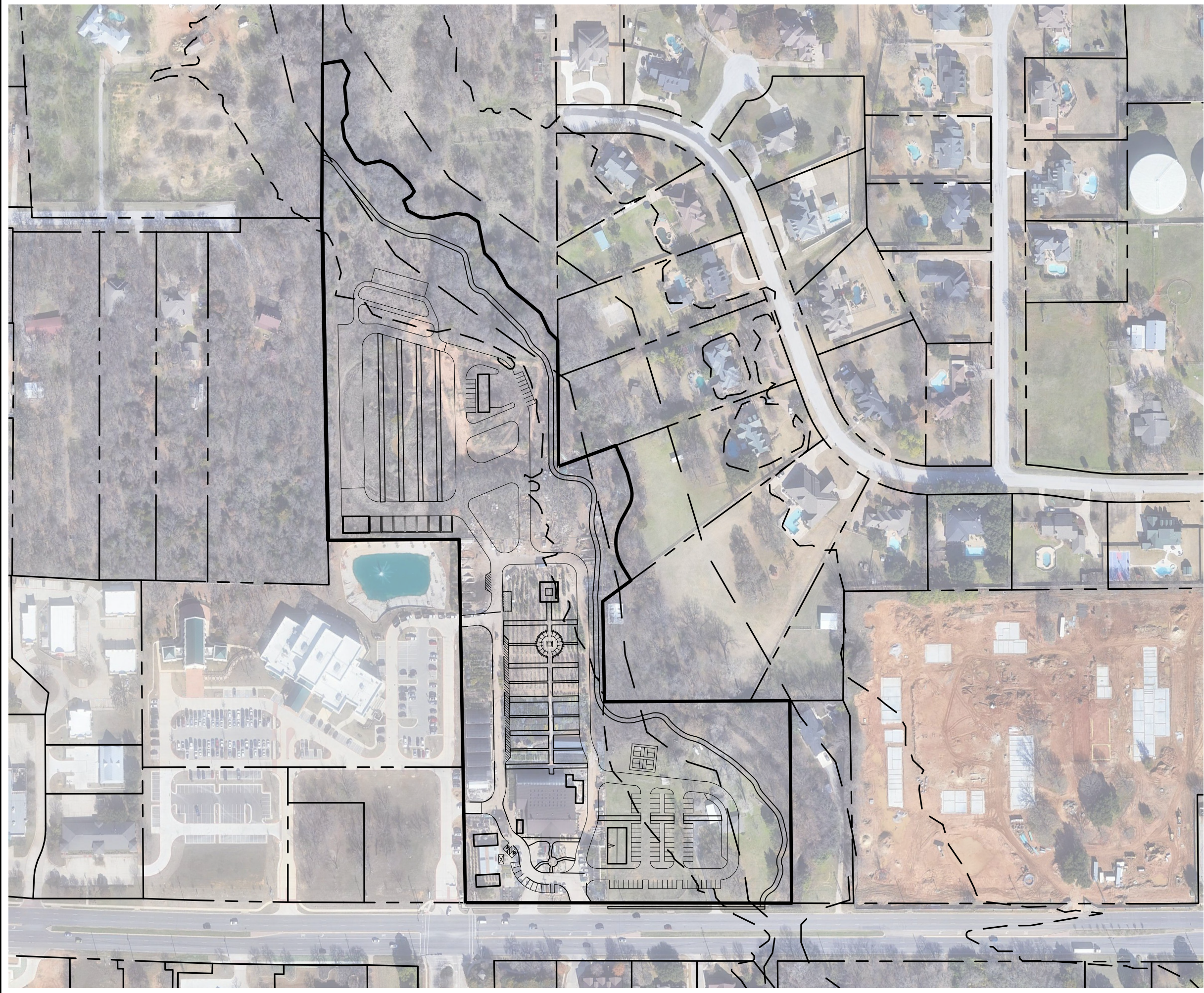


THE CALCULATIONS PRESENTED HEREIN ARE INTENDED SOLELY FOR COMPARATIVE PURPOSES. THIS DOCUMENT DOES NOT CONSTITUTE A WARRANTY OR GUARANTEE BY LONESTAR ELECTRIC SUPPLY REGARDING THE ACCURACY OF THE INFORMATION CONTAINED HEREIN, INCLUDING FUTURE CONFIGURATION AND LOCATIONS, WHICH ARE APPROXIMATE. THE ACCURACY OF LIGHT LEVELS DEPENDS ON VARIOUS FACTORS OUTLINED IN THIS CALCULATION AND MAY BE INFLUENCED BY CONDITIONS SPECIFIC TO THE ILLUMINATED SPACE. DEVIATIONS FROM THESE FACTORS WILL INEVITABLY IMPACT LIGHT LEVELS. IT IS OPERATIVE THAT THE NUMBER OF FIXTURES AND THEIR CONFIGURATION, AS CALCULATED HEREIN, BE CONFIRMED BY EITHER AN ARCHITECT OR AN ELECTRICAL ENGINEER.
 COPYRIGHT © 2024 LONESTAR ELECTRIC SUPPLY. ALL RIGHTS RESERVED. UNAUTHORIZED USE, REPRODUCTION, OR DISTRIBUTION OF THE DESIGNS, CONCEPTS, OR MATERIALS PROVIDED BY LONESTAR ELECTRIC SUPPLY IS STRICTLY PROHIBITED AND MAY RESULT IN LEGAL ACTION.


| TREES TO REMAIN | |
|-----------------|----------------|
| Tree # | Size & Species |
| 2105 | 14" BOIS D'ARC |
| 2202 | 8" CEDAR |
| 2203 | 12" ELM |
| 2210 | 14" ELM |
| 2211 | 6" ELM |
| 2212 | 14" ELM |
| 2213 | 26" ELM |
| 2214 | 8" CEDAR |
| 2215 | 10" ELM |
| 2216 | 22" BOIS D'ARC |
| 2217 | 16" ELM |
| 2218 | 16" ELM |
| 2219 | 6" HACKBERRY |
| 2220 | 6" ELM |
| 2221 | 8" HACKBERRY |
| 2222 | 8" ELM |
| 2223 | 8" ELM |
| 2224 | 12" ELM |
| 2225 | 8" ELM |
| 2226 | 12" ELM |
| 2227 | 6" OAK |
| 2228 | 12" OAK |
| 2229 | 14" OAK |
| 2230 | 6" OAK |
| 2231 | 16" OAK |
| 2232 | 8" CEDAR |
| 2234 | 18" ELM |
| 2235 | 6" ELM |
| 2236 | 26" OAK |
| 2237 | 22" ELM |
| 2238 | 8" ELM |
| 2239 | 10" ELM |
| 2240 | 6" CEDAR |
| 2241 | 6" ELM |
| 2242 | 6" ELM |
| 2243 | 6" ELM |
| 2244 | 12" ELM |
| 2248 | 12" ELM |
| 2249 | 6" CEDAR |
| 2250 | 14" ELM |
| 2251 | 22" ELM |
| 2252 | 14" ELM |
| 2253 | 14" CEDAR |
| 2254 | 26" ELM |
| 2255 | 12" ELM |
| 2256 | 8" ELM |
| 2257 | 8" CEDAR |
| 2258 | 22" OAK |
| 2259 | 34" OAK |
| 2260 | 10" ELM |
| 2261 | 12" ELM |

| TREES TO REMAIN | |
|-----------------|----------------|
| Tree # | Size & Species |
| 2262 | 8" ELM |
| 2263 | 36" BOIS D'ARC |
| 2264 | 24" OAK |
| 2265 | 22" OAK |
| 2266 | 6" CEDAR |
| 2267 | 22" OAK |
| 2268 | 16" CEDAR |
| 2269 | 22" OAK |
| 2270 | 34" OAK |
| 2271 | 36" OAK |
| 2272 | 22" OAK |
| 2273 | 26" OAK |
| 2274 | 12" ELM |
| 2275 | 24" WILLOW |
| 2276 | 6" ELM |
| 2277 | 6" ELM |
| 2278 | 6" ELM |
| 2279 | 24" BOIS D'ARC |
| 2280 | 6" POPLAR |
| 2281 | 6" CEDAR |
| 2282 | 8" ELM |
| 2283 | 8" HACKBERRY |
| 2284 | 10" HACKBERRY |
| 2285 | 12" ELM |
| 2286 | 10" ELM |
| 2287 | 6" ELM |
| 2288 | 8" ELM |
| 2289 | 6" HACKBERRY |
| 2291 | 18" ELM |
| 2292 | 8" BOIS D'ARC |
| 2293 | 6" BOIS D'ARC |
| 2294 | 18" ELM |
| 2295 | 8" ELM |
| 2296 | 8" ELM |
| 2297 | 12" OAK |
| 2298 | 8" ELM |
| 2299 | 8" ELM |
| 2300 | 6" ELM |
| 2301 | 12" ELM |
| 2302 | 12" ELM |
| 2303 | 12" ELM |
| 2304 | 8" ELM |
| 2305 | 20" ELM |
| 2306 | 12" OAK |
| 2307 | 12" OAK |
| 2308 | 8" OAK |
| 2309 | 12" OAK |
| 2310 | 12" OAK |
| 2311 | 12" OAK |
| 2312 | 12" OAK |
| 2313 | 12" OAK |
| 2314 | 12" OAK |
| 2315 | 12" OAK |
| 2316 | 12" OAK |
| 2317 | 12" OAK |
| 2318 | 12" OAK |
| 2319 | 12" OAK |
| 2320 | 12" OAK |
| 2321 | 12" OAK |
| 2322 | 12" OAK |
| 2323 | 12" OAK |
| 2324 | 12" OAK |
| 2325 | 12" OAK |
| 2326 | 12" OAK |
| 2327 | 12" OAK |
| 2328 | 12" OAK |
| 2329 | 12" OAK |
| 2330 | 12" OAK |
| 2331 | 12" OAK |
| 2332 | 12" OAK |
| 2333 | 12" OAK |
| 2334 | 12" OAK |
| 2335 | 12" OAK |
| 2336 | 12" OAK |
| 2337 | 12" OAK |
| 2338 | 12" OAK |
| 2339 | 12" OAK |
| 2340 | 12" OAK |
| 2341 | 12" OAK |
| 2342 | 12" OAK |
| 2343 | 12" OAK |
| 2344 | 12" OAK |
| 2345 | 12" OAK |
| 2346 | 12" OAK |
| 2347 | 12" OAK |
| 2348 | 12" OAK |
| 2349 | 12" OAK |
| 2350 | 12" OAK |
| 2351 | 12" OAK |
| 2352 | 12" OAK |
| 2353 | 12" OAK |
| 2354 | 12" OAK |
| 2355 | 12" OAK |
| 2356 | 12" OAK |
| 2357 | 12" OAK |
| 2358 | 12" OAK |
| 2359 | 12" OAK |
| 2360 | 12" OAK |
| 2361 | 12" OAK |
| 2362 | 12" OAK |
| 2363 | 12" OAK |
| 2364 | 12" OAK |
| 2365 | 12" OAK |
| 2366 | 12" OAK |
| 2367 | 12" OAK |
| 2368 | 12" OAK |
| 2369 | 12" OAK |
| 2370 | 12" OAK |
| 2371 | 12" OAK |
| 2372 | 12" OAK |
| 2373 | 12" OAK |
| 2374 | 12" OAK |
| 2375 | 12" OAK |
| 2376 | 12" OAK |
| 2377 | 12" OAK |
| 2378 | 12" OAK |
| 2379 | 12" OAK |
| 2380 | 12" OAK |
| 2381 | 12" OAK |
| 2382 | 12" OAK |
| 2383 | 12" OAK |
| 2384 | 12" OAK |
| 2385 | 12" OAK |
| 2386 | 12" OAK |
| 2387 | 12" OAK |
| 2388 | 12" OAK |
| 2389 | 12" OAK |
| 2390 | 12" OAK |
| 2391 | 12" OAK |
| 2392 | 12" OAK |
| 2393 | 12" OAK |
| 2394 | 12" OAK |
| 2395 | 12" OAK |
| 2396 | 12" OAK |
| 2397 | 12" OAK |
| 2398 | 12" OAK |
| 2399 | 12" OAK |
| 2400 | 12" OAK |
| 2401 | 12" OAK |
| 2402 | 12" OAK |
| 2403 | 12" OAK |
| 2404 | 12" OAK |
| 2405 | 12" OAK |
| 2406 | 12" OAK |
| 2407 | 12" OAK |
| 2408 | 12" OAK |
| 2409 | 12" OAK |
| 2410 | 12" OAK |
| 2411 | 12" OAK |
| 2412 | 12" OAK |
| 2413 | 12" OAK |
| 2414 | 12" OAK |
| 2415 | 12" OAK |
| 2416 | 12" OAK |
| 2417 | 12" OAK |
| 2418 | 12" OAK |
| 2419 | 12" OAK |
| 2420 | 12" OAK |
| 2421 | 12" OAK |
| 2422 | 12" OAK |
| 2423 | 12" OAK |
| 2424 | 12" OAK |
| 2425 | 12" OAK |
| 2426 | 12" OAK |
| 2427 | 12" OAK |
| 2428 | 12" OAK |
| 2429 | 12" OAK |
| 2430 | 12" OAK |
| 2431 | 12" OAK |
| 2432 | 12" OAK |
| 2433 | 12" OAK |
| 2434 | 12" OAK |
| 2435 | 12" OAK |
| 2436 | 12" OAK |
| 2437 | 12" OAK |
| 2438 | 12" OAK |
| 2439 | 12" OAK |
| 2440 | 12" OAK |
| 2441 | 12" OAK |
| 2442 | 12" OAK |
| 2443 | 12" OAK |
| 2444 | 12" OAK |
| 2445 | 12" OAK |
| 2446 | 12" OAK |
| 2447 | 12" OAK |
| 2448 | 12" OAK |
| 2449 | 12" OAK |
| 2450 | 12" OAK |
| 2451 | 12" OAK |
| 2452 | 12" OAK |
| 2453 | 12" OAK |
| 2454 | 12" OAK |
| 2455 | 12" OAK |
| 2456 | 12" OAK |
| 2457 | 12" OAK |
| 2458 | 12" OAK |
| 2459 | 12" OAK |
| 2460 | 12" OAK |
| 2461 | 12" OAK |
| 2462 | 12" OAK |
| 2463 | 12" OAK |
| 2464 | 12" OAK |
| 2465 | 12" OAK |
| 2466 | 12" OAK |
| 2467 | 12" OAK |
| 2468 | 12" OAK |
| 2469 | 12" OAK |
| 2470 | 12" OAK |
| 2471 | 12" OAK |
| 2472 | 12" OAK |
| 2473 | 12" OAK |
| 2474 | 12" OAK |
| 2475 | 12" OAK |
| 2476 | 12" OAK |
| 2477 | 12" OAK |
| 2478 | 12" OAK |
| 2479 | 12" OAK |
| 2480 | 12" OAK |
| 2481 | 12" OAK |
| 2482 | 12" OAK |
| 2483 | 12" OAK |
| 2484 | 12" OAK |
| 2485 | 12" OAK |
| 2486 | 12" OAK |
| 2487 | 12" OAK |
| 2488 | 12" OAK |
| 2489 | 12" OAK |
| 2490 | 12" OAK |
| 2491 | 12" OAK |
| 2492 | 12" OAK |
| 2493 | 12" OAK |
| 2494 | 12" OAK |
| 2495 | 12" OAK |
| 2496 | 12" OAK |
| 2497 | 12" OAK |
| 2498 | 12" OAK |
| 2499 | 12" OAK |
| 2500 | 12" OAK |
| 2501 | 12" OAK |
| 2502 | 12" OAK |
| 2503 | 12" OAK |
| 2504 | 12" OAK |
| 2505 | 12" OAK |
| 2506 | 12" OAK |
| 2507 | 12" OAK |
| 2508 | 12" OAK |
| 2509 | 12" OAK |
| 2510 | 12" OAK |
| 2511 | 12" OAK |
| 2512 | 12" OAK |
| 2513 | 12" OAK |
| 2514 | 12" OAK |
| 2515 | 12" OAK |
| 2516 | 12" OAK |
| 2517 | 12" OAK |
| 2518 | 12" OAK |
| 2519 | 12" OAK |
| 2520 | 12" OAK |
| 2521 | 12" OAK |
| 2522 | 12" OAK |
| 2523 | 12" OAK |
| 2524 | 12" OAK |
| 2525 | 12" OAK |
| 2526 | 12" OAK |
| 2527 | 12" OAK |
| 2528 | 12" OAK |
| 2529 | 12" OAK |
| 2530 | 12" OAK |
| 2531 | 12" OAK |
| 2532 | 12" OAK |
| 2533 | 12" OAK |
| 2534 | 12" OAK |
| 2535 | 12" OAK |
| 2536 | 12" OAK |
| 2537 | 12" OAK |
| 2538 | 12" OAK |
| 2539 | 12" OAK |
| 2540 | 12" OAK |
| 2541 | 12" OAK |
| 2542 | 12" OAK |
| 2543 | 12" OAK |
| 2544 | 12" OAK |
| 2545 | 12" OAK |
| 2546 | 12" OAK |
| 2547 | 12" OAK |
| 2548 | 12" OAK |
| 2549 | 12" OAK |
| 2550 | 12" OAK |
| 2551 | 12" OAK |
| 2552 | 12" OAK |
| 2553 | 12" OAK |
| 2554 | 12" OAK |
| 2555 | 12" OAK |
| 2556 | 12" OAK |
| 2557 | 12" OAK |
| 2558 | 12" OAK |
| 2559 | 12" OAK |
| 2560 | 12" OAK |
| 2561 | 12" OAK |
| 2562 | 12" OAK |
| 2563 | 12" OAK |
| 2564 | 12" OAK |
| 2565 | 12" OAK |
| 2566 | 12" OAK |
| 2567 | 12" OAK |
| 2568 | 12" OAK |
| 2569 | 12" OAK |
| 2570 | 12" OAK |
| 2571 | 12" OAK |
| 2572 | 12" OAK |
| 2573 | 12" OAK |
| 2574 | 12" OAK |
| 2575 | 12" OAK |
| 2576 | 12" OAK |
| 2577 | 12" OAK |
| 2578 | 12" OAK |
| 2579 | 12" OAK |
| 2580 | 12" OAK |
| 2581 | 12" OAK |
| 2582 | 12" OAK |
| 2583 | 12" OAK |
| 2584 | 12" OAK |
| 2585 | 12" OAK |
| 2586 | 12" OAK |
| 2587 | 12" OAK |
| 2588 | 12" OAK |
| 2589 | 12" OAK |
| 2590 | 12" OAK |
| 2591 | 12" OAK |
| 2592 | 12" OAK |
| 2593 | 12" OAK |
| 2594 | 12" OAK |
| 2595 | 12" OAK |
| 2596 | 12" OAK |
| 2597 | 12" OAK |
| 2598 | 12" OAK |
| 2599 | 12" OAK |
| 2600 | 12" OAK |
| 2601 | 12" OAK |

| TREES TO REMAIN | |
|-----------------|------------------|
| Tree # | Size & Species |
| 2602 | 6" OAK |
| 2603 | 10" HONEY LOCUST |
| 2604 | 8" ELM |
| 2605 | 22" OAK |
| 2606 | 6" CEDAR |
| 2607 | 8" OAK |
| 2608 | 16" HACKBERRY |
| 2609 | 8" MESQUITE |
| 2610 | 12" HONEY LOCUST |
| 2611 | 12" OAK |
| 2612 | 24" WILLOW |
| 2613 | 12" OAK |
| 2614 | 20" OAK |
| 2615 | 6" OAK |
| 2616 | 14" OAK |
| 2617 | 8" CEDAR |
| 2618 | 14" ELM |
| 2619 | 18" BOIS D'ARC |
| 2620 | 8" OAK |
| 2621 | 18" OAK |
| 2622 | 6" BOIS D'ARC |
| 2623 | 24" OAK |
| 2624 | 12" OAK |
| 2625 | 24" OAK |
| 2626 | 16" BOIS D'ARC |
| 2627 | 20" CEDAR |
| 2628 | 12" MESQUITE |
| 2629 | 10" MESQUITE |
| 2630 | 6" MESQUITE |
| 2631 | 10" MESQUITE |
| 2632 | 6" MESQUITE |
| 2633 | 8" MESQUITE |
| 2634 | 16" OAK |
| 2635 | 14" OAK |
| 2636 | 14" OAK |
| 2637 | 14" OAK |
| 2638 | 18" OAK |
| 2639 | 18" OAK |
| 2640 | 18" OAK |
| 2641 | 14" OAK |
| 2642 | 14" OAK |
| 2643 | 14" OAK |
| 2644 | 14" OAK |
| 2645 | 14" OAK |
| 2646 | 14" OAK |
| 2647 | 14" OAK |
| 2648 | 14" OAK |
| 2649 | 14" OAK |
| 2650 | 14" OAK |
| 2651 | 14" OAK |
| 2652 | 14" OAK |
| 2653 | 14" OAK |
| 2654 | 14" OAK |
| 2655 | 14" OAK |
| 2656 | 14" OAK |
| 2657 | 14" OAK |
| 2658 | 14" OAK |
| 2659 | 14" OAK |
| 2660 | 14" OAK |
| 2661 | 14" OAK |
| 2662 | 14" OAK |
| 2663 | 14" OAK |
| 2664 | 14" OAK |
| 2665 | 14" OAK |
| 2666 | 14" OAK |
| 2667 | 14" OAK |
| 2668 | 14" OAK |
| 2669 | 14" OAK |
| 2670 | 14" OAK |
| 2671 | 14" OAK |
| 2672 | 14" OAK |
| 2673 | 14" OAK |
| 2674 | 14" OAK |
| 2675 | 14" OAK |
| 2676 | 14" OAK |
| 2677 | 14" OAK |
| 2678 | 14" OAK |
| 2679 | 14" OAK |
| 2680 | 14" OAK |
| 2681 | 14" OAK |
| 2682 | 14" OAK |
| 2683 | 14" OAK |
| 2684 | 14" OAK |
| 2685 | 14" OAK |
| 2686 | 14" OAK |
| 2687 | 14" OAK |
| 2688 | 14" OAK |
| 2689 | 14" OAK |
| 2690 | 14" OAK |
| 2691 | 14" OAK |
| 2692 | 14" OAK |
| 2693 | 14" OAK |
| 2694 | 14" OAK |
| 2695 | 14" OAK |
| 2696 | 14" OAK |
| 2697 | 14" OAK |
| 2698 | 14" OAK |
| 2699 | 14" OAK |
| 2700 | 14" OAK |
| 2701 | 14" OAK |
| 2702 | 14" OAK |
| 2703 | 14" OAK |
| 2704 | 14" OAK |
| 2705 | 14" OAK |
| 2706 | 14" OAK |
| 2707 | 14" OAK |
| 2708 | 14" OAK |
| 2709 | 14" OAK |
| 2710 | 14" OAK |
| 2711 | 14" OAK |
| 2712 | 14" OAK |
| 2713 | 14" OAK |
| 2714 | 14" OAK |
| 2715 | 14" OAK |



(IN FEET)
1 INCH = 200 FT

| | | | | |
|---|---------|--|--------------|--------|
| LANDSCAPE SYSTEMS AERIAL OVERLAY KELLER, TEXAS | | | | |
|  | | P.O. BOX 93206 SOUTHLAKE, TEXAS 76092 PHONE: (817) 253-5727 ENGINEERING FIRM REGISTRATION NUMBER F-23328 | | |
| DRAWN BY: | SCALE: | DATE: | PROJECT NO.: | SHEET: |
| DSM | 1"=200' | 4/29/2025 | 1012-01 | 8 |

TYPICAL GREENHOUSES AND SHADE STRUCTURES ELEVATIONS



SOUTHEAST VIEW FROM BOWDEN CENTER



TYPICAL FENCING MATERIAL FOR PICKLE BALL COURTS



SAMPLE IMAGES OF LOOKING EAST FROM PROPERTY (EXISTING RESIDENTIAL BACKGROUND)

