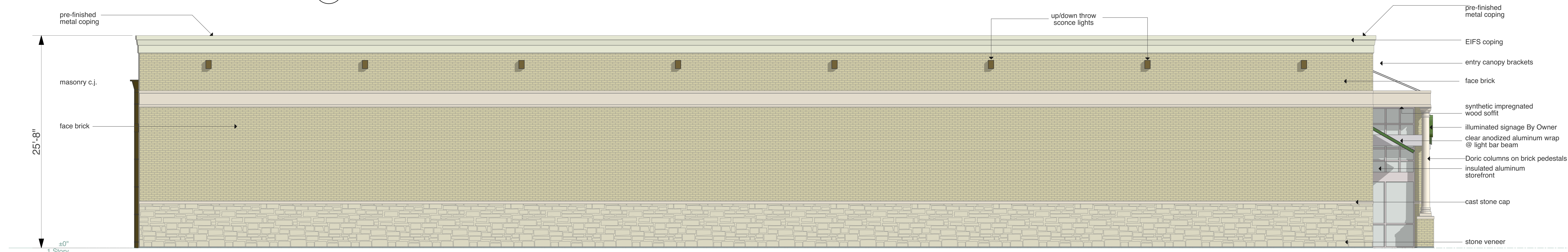


01 East Elevation
 SCALE: 3/16" = 1'-0"



02 South Elevation
 SCALE: 3/16" = 1'-0"



03 West Elevation
 SCALE: 3/16" = 1'-0"



04 North Elevation
 SCALE: 3/16" = 1'-0"

Conceptual
 Only
 (May Change During
 Site Plan Process)

Material	Mfg.	Color	01 South Elevation (front)		02 North Elevation (rear)		03 West Elevation (left)		04 East Elevation (right)	
			Area	Percentage	Area	Percentage	Area	Percentage	Area	Percentage
stone veneer 1	Custom Stone	Granbury Natural Chopped (blend)	2038	33.1%	552	14.0%	245	14.9%	245	14.9%
cast stone	Better Cast Stone	Sand	973	15.8%	20	0.5%	85	5.2%	85	5.2%
brick veneer	Pine Hall	Tuscany	436	7.1%	42	1.1%	199	12.1%	199	12.1%
stucco	Dryvit	110 Van Dyke	322	5.2%	2882	73.2%	703	42.8%	703	42.8%
aluminum storefront	US Aluminum	clear frame clear glass	1747	28.4%	0	0.0%	130	7.9%	130	7.9%
metal awning	Berridge	Hemlock Green	285	4.6%	0	0.0%	82	5.0%	82	5.0%
metal coping	Pac Clad	Sandstone	93	1.5%	120	3.0%	65	4.0%	65	4.0%
EIFS (coping)	Dryvit	456 Oyster Shell	258	4.2%	323	8.2%	135	8.2%	135	8.2%
Totals			6152	100.0%	3939	100.0%	1644	100.0%	1644	100.0%

SUP
 Schematic
 Elevation
 Submittal

Revisions

This document is released for the purpose of interim review and does not constitute an offer of insurance or any other financial product. It is not to be used for construction, bidding or permitting.



Tue 4/6/2021 11:48 AM

Duane Meyers <drmeyers@mac.com>

Goody Goody Keller/Building Material Percentages

To Matthew Cyr; Johnson Dave

Cc Meyers Bennie

i Follow up. Completed on Tuesday, April 6, 2021.
You forwarded this message on 4/7/2021 11:00 AM.

Matthew,

Per our conversation this morning regarding masonry material for the Keller GoodyGoody store.

The exterior elevations are comprised of the following masonry systems:

stone veneer wainscot	16.2%
cast stone water table	1.1%
brick veneer	48.3%
<u>split face CMU</u>	<u>18.2%</u>
TOTAL Masonry	83.8%

The balance of the exterior elevations is made ups of:

metal awning (which has masonry behind it)	5.7%
EIFS trim* & coping	8.3%
<u>metal coping</u>	<u>2.2%</u>
TOTAL Non-Masonry	16.2%

*Note that the EIFS trim has brick under it and is a 2'-0" ornamental band at 17'-0" AFF to 19'-0" AFF. (AFF=above finished floor)

Let me know if you have any additional questions.

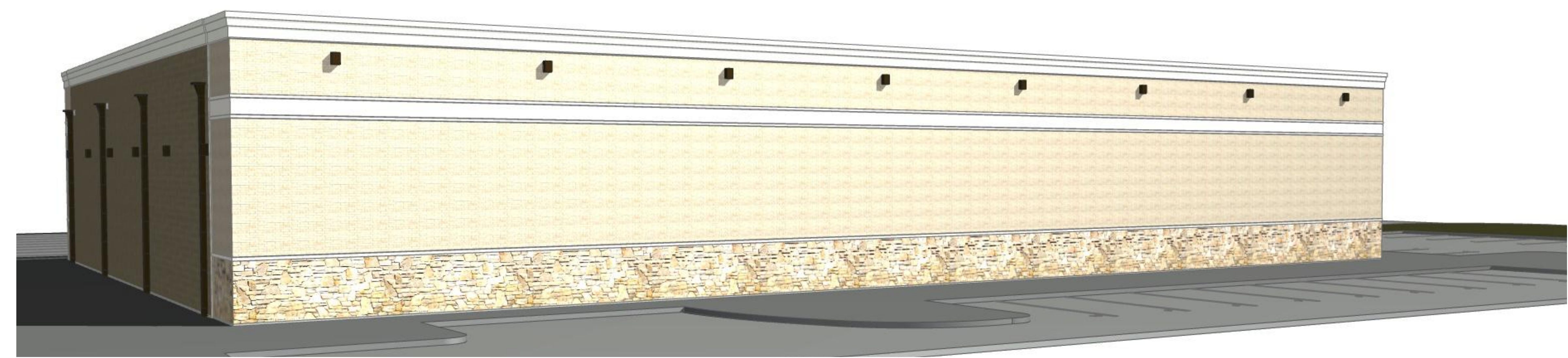
**Conceptual
Only**
(May Change During
Site Plan Process)



01 Axo SE
A3.02 SCALE: 1:102.81



02 Axo NE
A3.02 SCALE: 1:103.55



04 Axo SW
A3.02 SCALE: 1:105.22



03 Axo NW
A3.02 SCALE: 1:91.55

Material	Mfg.	Color	01 South Elevation (front)		02 North Elevation (rear)		03 West Elevation (left)		04 East Elevation (right)	
			Area	Percentage	Area	Percentage	Area	Percentage	Area	Percentage
stone veneer 1	Custom Stone	Granbury Natural Chopped (blend)	2038	33.1%	552	14.0%	245	14.9%	245	14.9%
cast stone	Better Cast Stone	Sand	973	15.8%	20	0.5%	85	5.2%	85	5.2%
brick veneer	Pine Hall	Tuscany	436	7.1%	42	1.1%	199	12.1%	199	12.1%
stucco	Dryvit	110 Van Dyke	322	5.2%	2882	73.2%	703	42.8%	703	42.8%
aluminum storefront	US Aluminum	clear frame clear glass	1747	28.4%	0	0.0%	130	7.9%	130	7.9%
metal awning	Berridge	Hemlock Green	285	4.6%	0	0.0%	82	5.0%	82	5.0%
metal coping	Pac Clad	Sandstone	93	1.5%	120	3.0%	65	4.0%	65	4.0%
EIFS (coping)	Dryvit	456 Oyster Shell	258	4.2%	323	8.2%	135	8.2%	135	8.2%
Totals			6152	100.0%	3939	100.0%	1644	100.0%	1644	100.0%



**Conceptual
Only**
(May Change During
Site Plan Process)