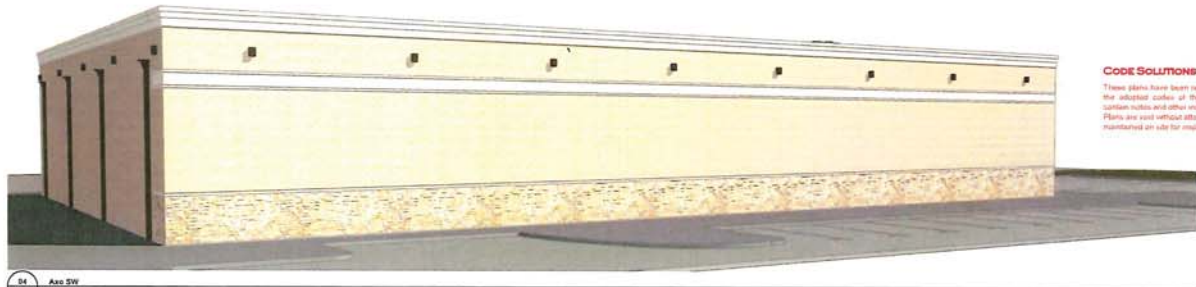




01 A3.02
A3.02
SCALE: 1:102.81



02 A3.02
A3.02
SCALE: 1:102.55



04 A3.02
A3.02
SCALE: 1:102.22

CODE SOLUTIONS INC.
These plans have been reviewed for compliance with the adopted codes of the jurisdiction. Plans may contain notes and other instructions for inspector's use. Plans are not without attached notes. Plans are to be maintained on site for inspector's use only.



03 A3.02
A3.02
SCALE: 1:91.55

Total Material Calculations Goody Goody Keller			01 South Elevation (front)		02 North Elevation (rear)		03 West Elevation (left)		04 East Elevation (right)		Totals		Masonry Totals	
Material	Mfg.	Color	Area	Percentage	Area	Percentage	Area	Percentage	Area	Percentage	Area	Percentage	Area	Percentage
stone veneer 1	Custom Stone	Goody Natural Chopped Blend	794	22.5%	649	18.2%	87	2.2%	431	19.5%	1,871	16.2%		
cast stone	Texas Bldg Products	Spindy White	47	1.3%	39	1.2%	8	0.2%	30	1.4%	122	1.1%		
brick veneer	Acme	Spandibrook	2,342	66.2%	1,729	47.8%	2,561	66.4%	1,119	51.7%	7,674	66.5%		63.8%
metal siding	Beridge	Classic Green	0	0.0%	589	11.8%	0	0.0%	279	12.8%	848	7.6%		
metal coping	Uni Clad	Sandstone	75	2.1%	75	2.4%	33	1.0%	33	1.5%	246	2.2%		
EIFS (ceiling)	Dryvit	SW Ivory Lace (match)	272	7.7%	272	8.7%	225	8.3%	194	9.0%	963	8.3%		
Totals			3,530	100.0%	3,123	100.0%	2,725	100.0%	2,156	100.0%	11,534	100.0%		83.8%



GOODY GOODY
Keller, TX

Goody Goody Construction Documents
Keller, Texas

Reviewed by:
Inspector based on
City of Keller Plan
Review



A3.02

30 Sep 2021



Goody Goody
Keller, TX

Goody Goody
Construction Documents
Keller, Texas

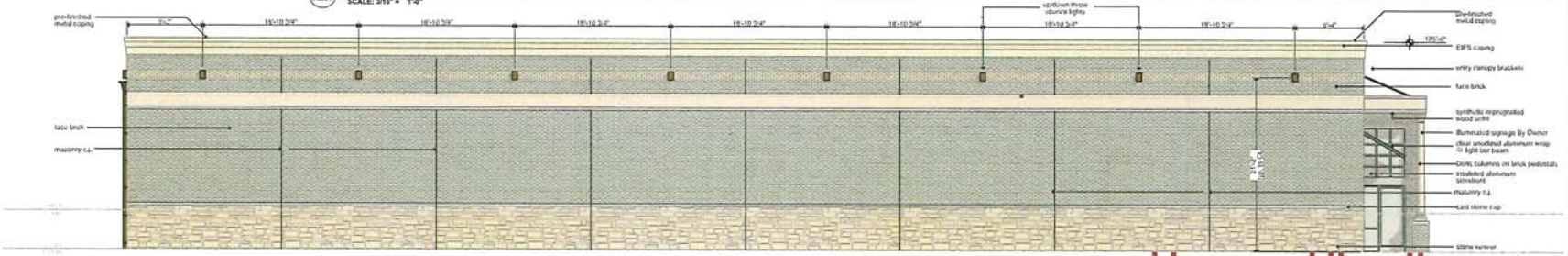
Revisions:
 A - revisions based on City of Keller Plan Review
 B - revisions based on RTU submittal



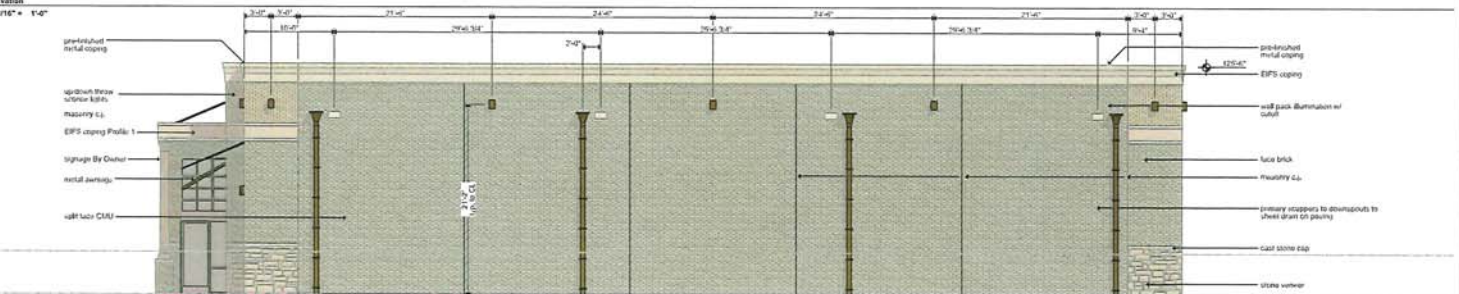
A3.01
11 Oct 2021



01 East Elevation
SCALE: 3/16" = 1'-0"



02 South Elevation
SCALE: 3/16" = 1'-0"



03 West Elevation
SCALE: 3/16" = 1'-0"

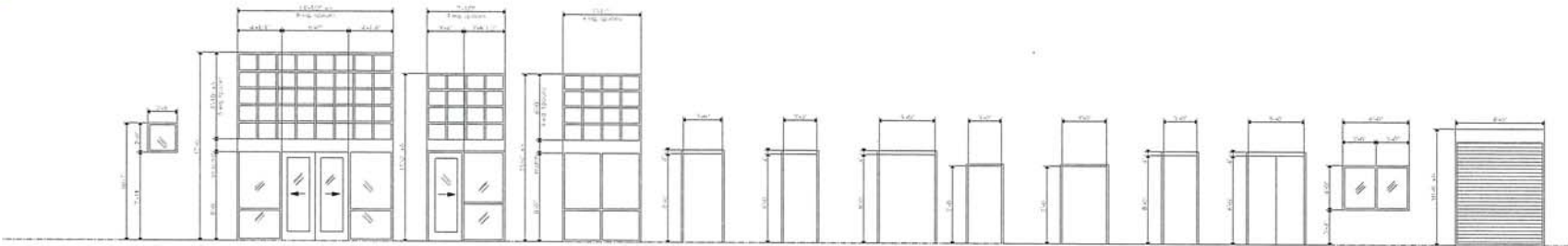


04 North Elevation
SCALE: 3/16" = 1'-0"

Material	Mfg.	Color	01 South Elevation (front)		02 North Elevation (rear)		03 West Elevation (left)		04 East Elevation (right)		Totals		Masonry Totals	
			Area	Percentage	Area	Percentage	Area	Percentage	Area	Percentage	Area	Percentage	Area	Percentage
stone veneer 1	Custom Stone	Granbury Natural Chopped Blend	794	25.5%	569	18.2%	87	3.2%	471	19.5%	1,871	16.7%		
cast stone	Texas Blog Products	Sandy White	47	1.3%	39	1.2%	6	0.2%	30	1.4%	122	1.1%		
brick veneer	Acme	Saddlebrook	3,347	66.3%	1,799	57.6%	2,351	86.4%	1,179	54.7%	7,674	66.5%		
metal awning	Bambridge	Classic Green	0	0.0%	549	17.8%	0	0.0%	276	12.2%	848	7.5%		83.8%
metal coping	Ury Clad	Sandstone	75	2.3%	73	2.4%	53	1.9%	53	2.3%	258	2.3%		
EPS coping	Drivet	SW Ivory Lace (match)	272	7.3%	272	8.7%	225	8.3%	194	9.0%	963	8.3%		
Totals			3,500	100.0%	3,123	100.0%	2,725	100.0%	2,156	100.0%	11,534	100.0%		



GOODY GOODY
Keller, TX



- A** TYPE 1 clear anodized insulated glazing
- B010 B010 B010 B010** TYPE 2 clear anodized aluminum automated two way slider
- B010 B010** TYPE 2 clear anodized aluminum automated one way slider
- C** TYPE 2 clear anodized aluminum automated one way slider
- D00** 3480 x 1 3/4" HM door w/ 2" x 5 3/4" gulf HM frame, insulated w/ prep 4" float & panic exit device
- D05** 3080 x 1 3/4" HM door w/ 2" x 5 3/4" gulf HM frame, 4" head & panic exit device
- D06** 5080 x 1 3/4" HM door frame by Contractor, to accept 2080 pair of Elson doors by Owner
- D07** 3070 x 1 3/4" HM door w/ 2" x 5 3/4" gulf HM frame, insulated w/ 2" head
- D08** 4070 w/ 2" x 5 3/4" gulf HM frame, coated glazing
- D09 D10 D11** 3080 SCWD PLUM clad
- D12** 5080 SCWD PLUM clad
- D13** 6040 HM frame w/ 2" x 5 3/4" gulf HM frame, one way vision tempered glazing
- D14** insulated rolling cut stock door w/ automated and locking device

Aluminum Storefront & HM 2018 IECC Compliance Requirements:

Equal to US Aluminum #1T451 (2" x 4 1/2") Center Glazing System, reinforced as required by glass area, clear anodized finish, w/ PPG Solarban 70XL Low E Insulated Glass w/ Clear Tint or equal, thermally broken.

- All framing/glazing systems to be compliant with IECC 2018
- All storefront glazing to be insulated, thermally broken, clear tint with Low E coating; 0.46 U Factor with 0.25 SHGC (SEW) 0.33 (H)
- All storefront doors to be: 0.77 U Factor with 0.25 SHGC (SEW) 0.33 (H)
- All HM Doors to be insulated with galvanized frame; 0.66 U Factor

01 Door Frame Storefront Elevations
SCALE: 1/4" = 1'-0"

Aluminum Storefront & HM 2015 IECC Compliance Requirements:

TYPE 1
All systems are TYPE 1 unless noted otherwise:
Equal to US Aluminum #1T451 (2" x 4 1/2") Center Glazing System, reinforced as required by glass area, clear anodized finish, w/ PPG Solarban 70XL Low E Insulated Glass w/ Clear Tint or equal, thermally broken.

TYPE 2
Equal to US Aluminum CurtainWall (2.5" x 6") Center Glazing System, reinforced as required by glass area, clear anodized finish, w/ PPG Solarban 70XL Low E Insulated Glass w/ Clear Tint or equal, thermally broken.

EXIT DOORS SHALL OPEN FROM THE INSIDE WITHOUT THE USE OF A KEY OR ANY SPECIAL KNOWLEDGE OR EFFORT

CODE SOLUTIONS INC.
These plans have been reviewed for compliance with the adopted code of this jurisdiction. There may be certain notes and other instructions for inspectors use. Plans are void without attached notes. Plans are to be maintained on site for inspectors use only.

Goody Goody
Construction Documents
Keller, Texas

REVISIONS based on City of Keller Plan Review



A3.03
30 Sep 2022