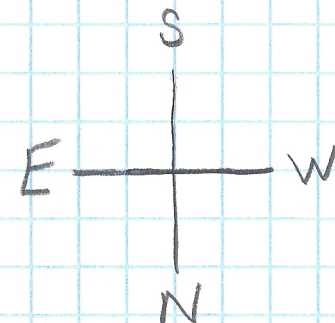


### Electrical

- x 110 4 gang
- ⊗ 220
- \* 110 2 gang
- ⊗ 110 GFCI 2 gang

LED Lights



Each Square 2'

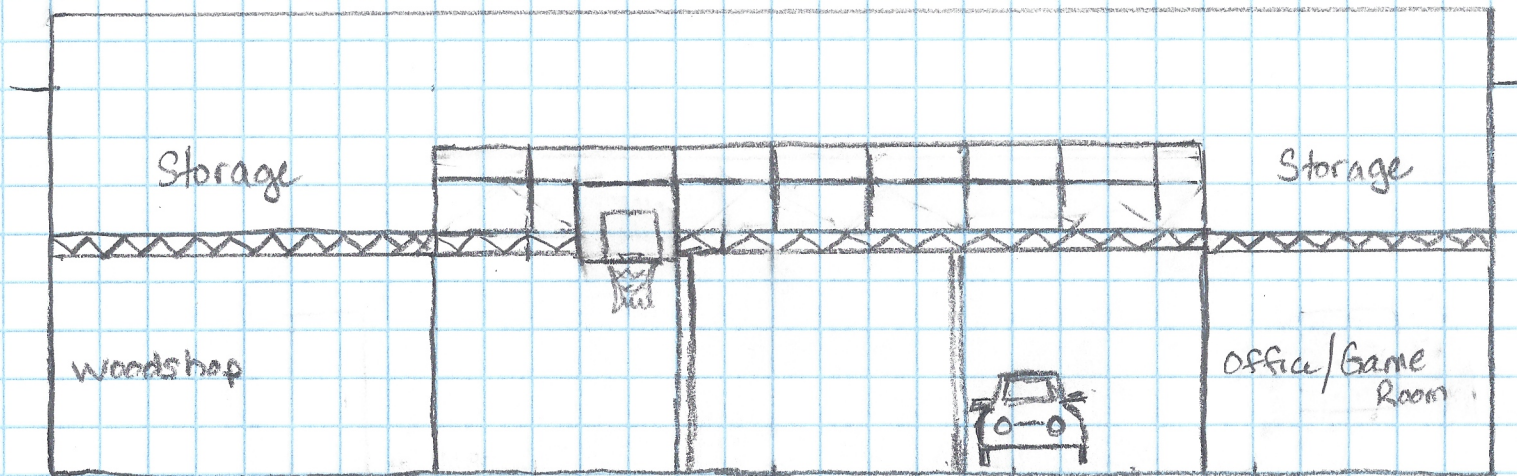


# South Facing Inside Elevation

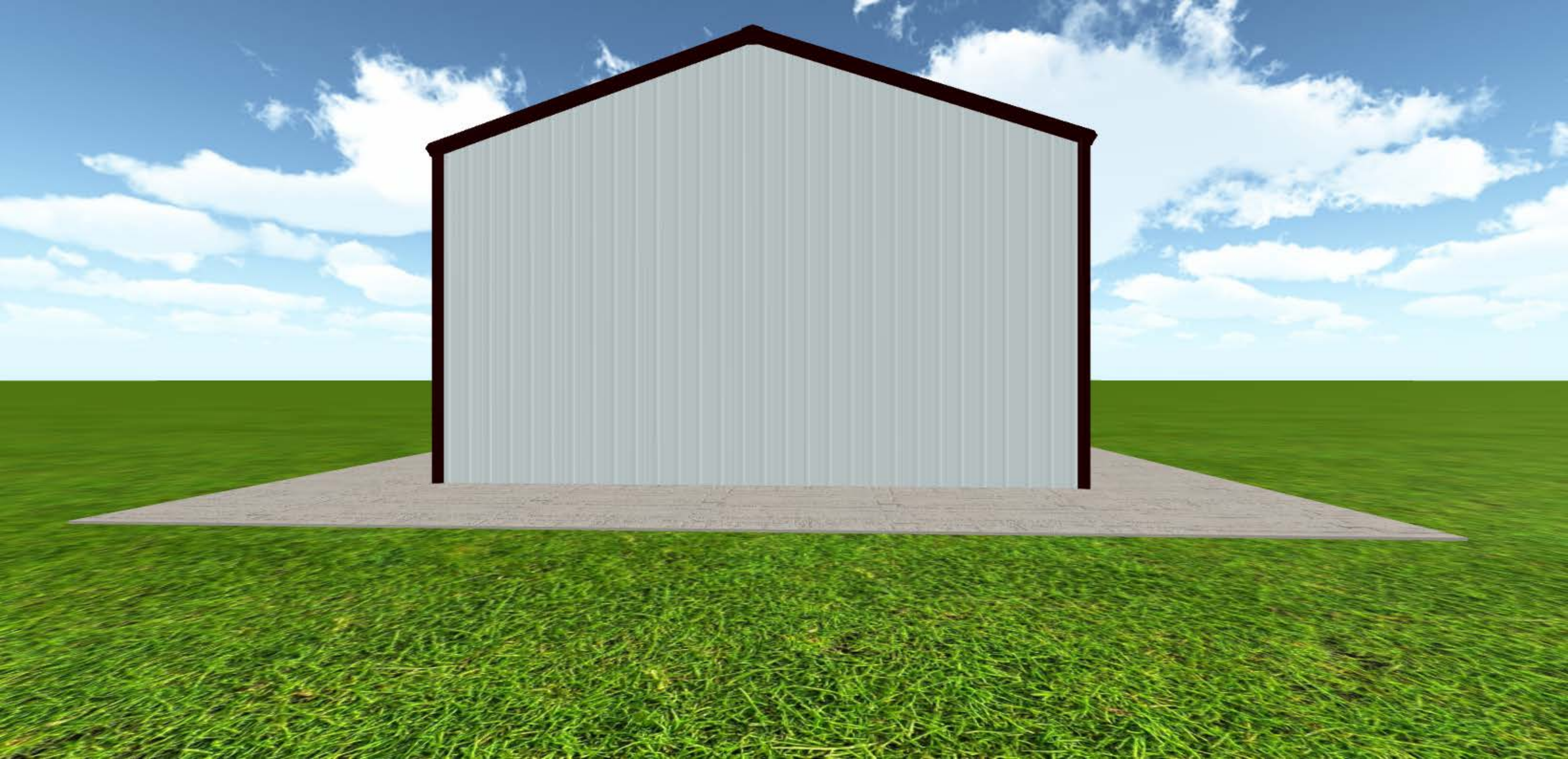
40" Railing will secure the second story storage areas as well as bridge

Basketball Goal in recreation area (east)

Car lift (west) - tool chest and workbench along south wall under bridge













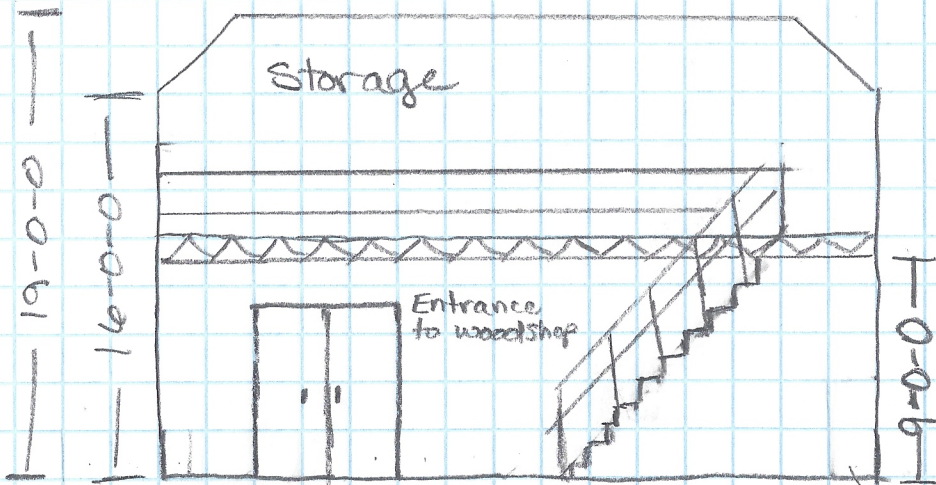






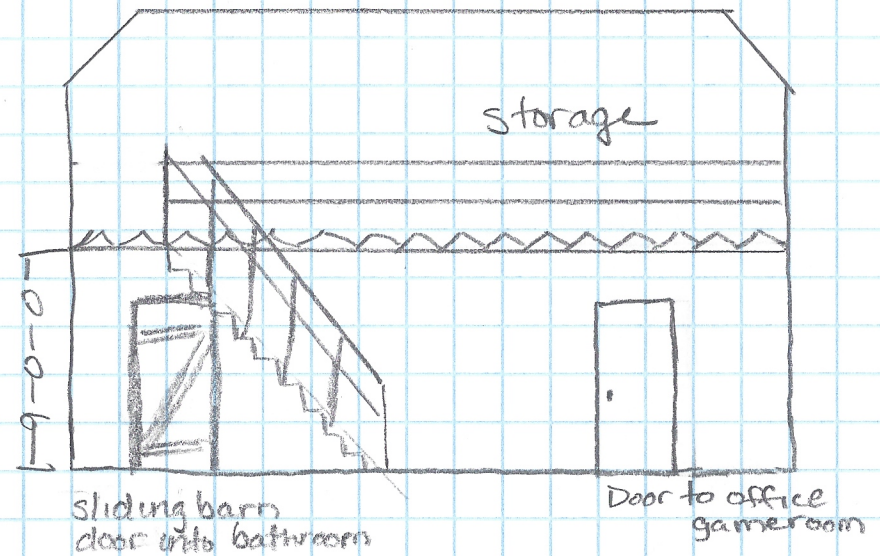


## Woodshop



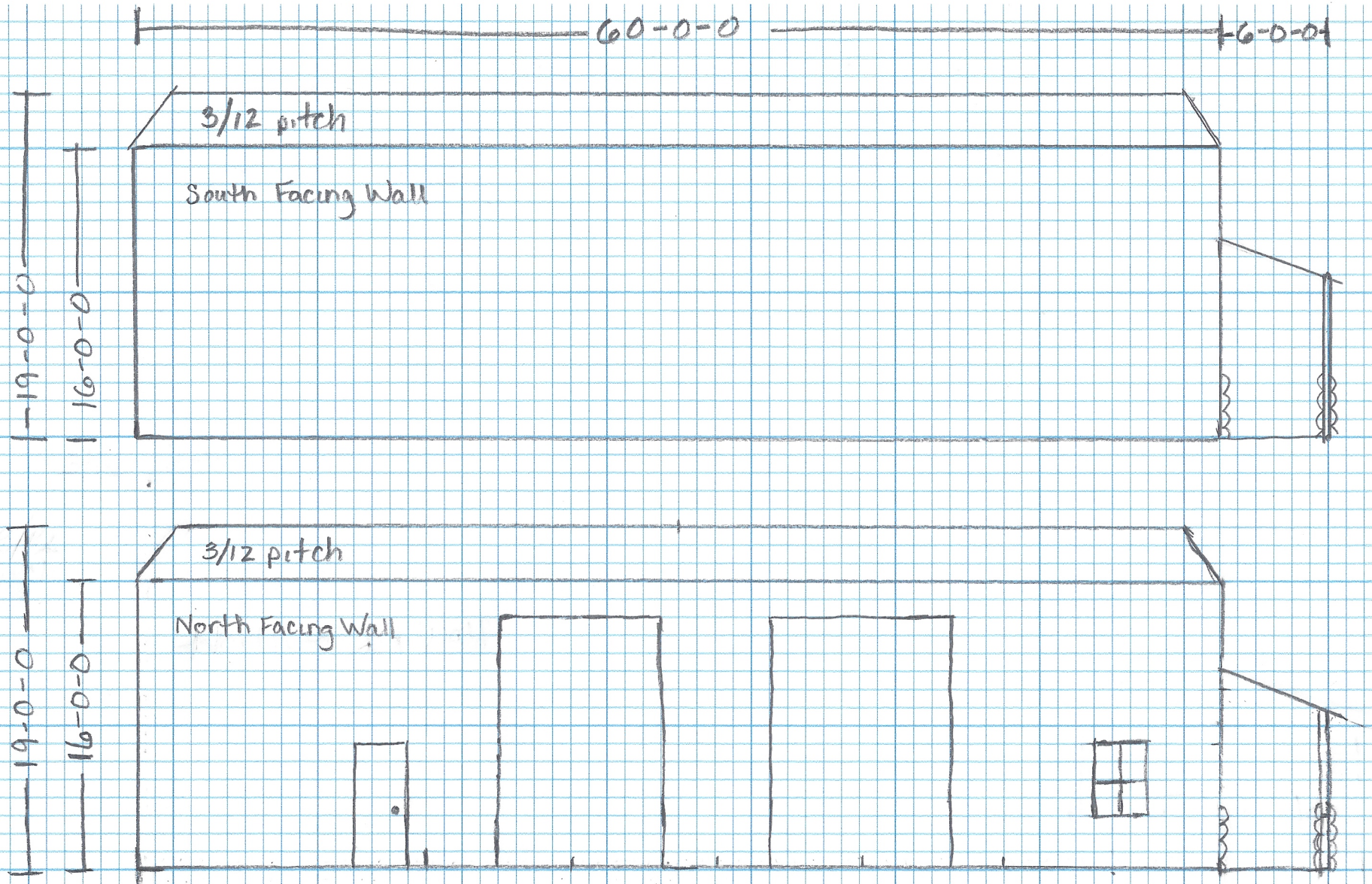
East inside elevation  
 40" railing to secure  
 storage area

## Office/Game room



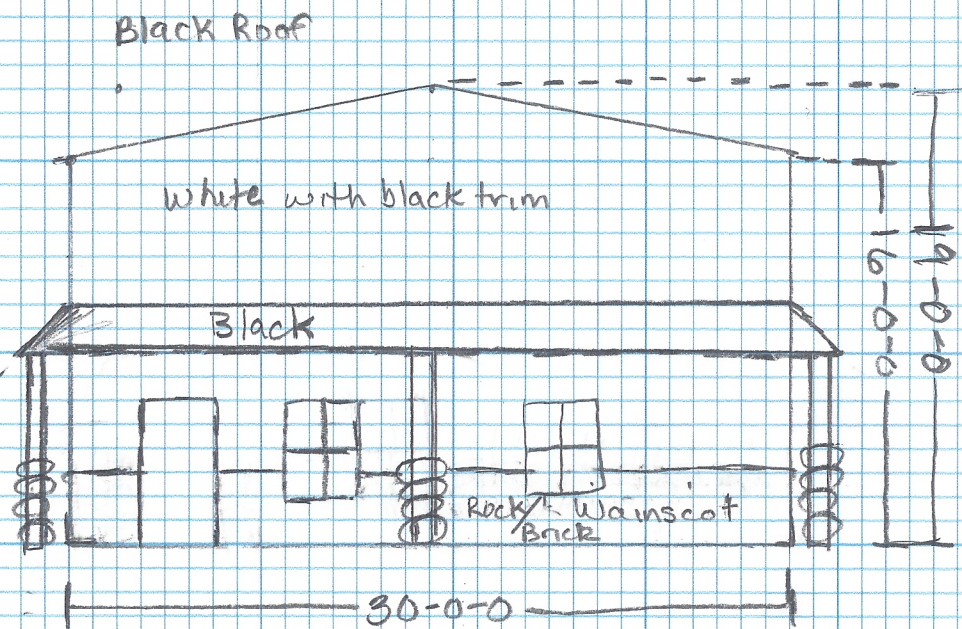
West inside elevation  
 40" railing to secure  
 storage area



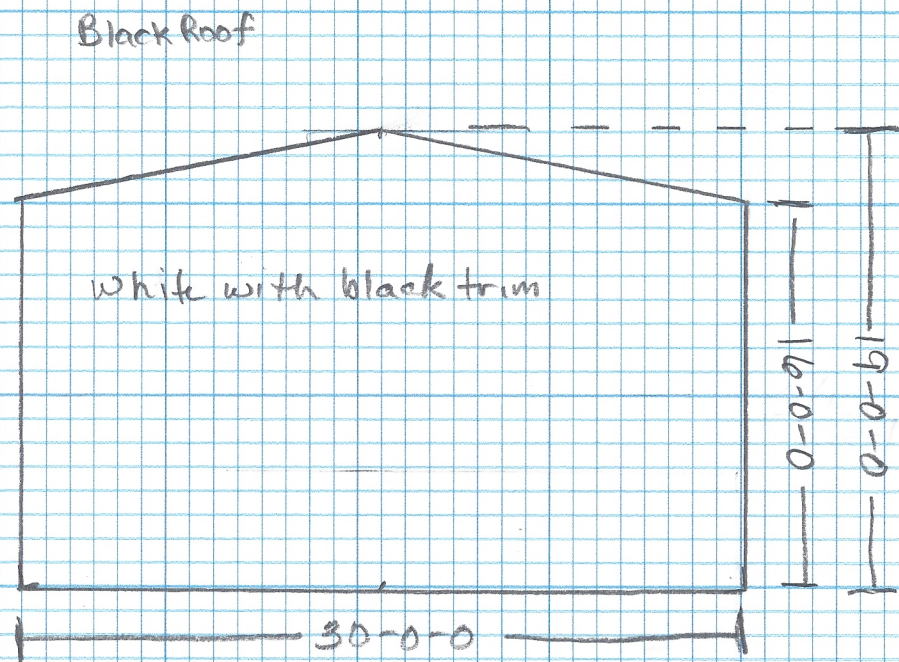


Black PBR 26 gauge roof  
Polar White PBR 26 gauge side panels  
Black Trim / Black Gutters  
6' Porch  
48" wainscot west wall + porch Post





West Elevation Facing Willis Ln.



East wall  
faces back of yard