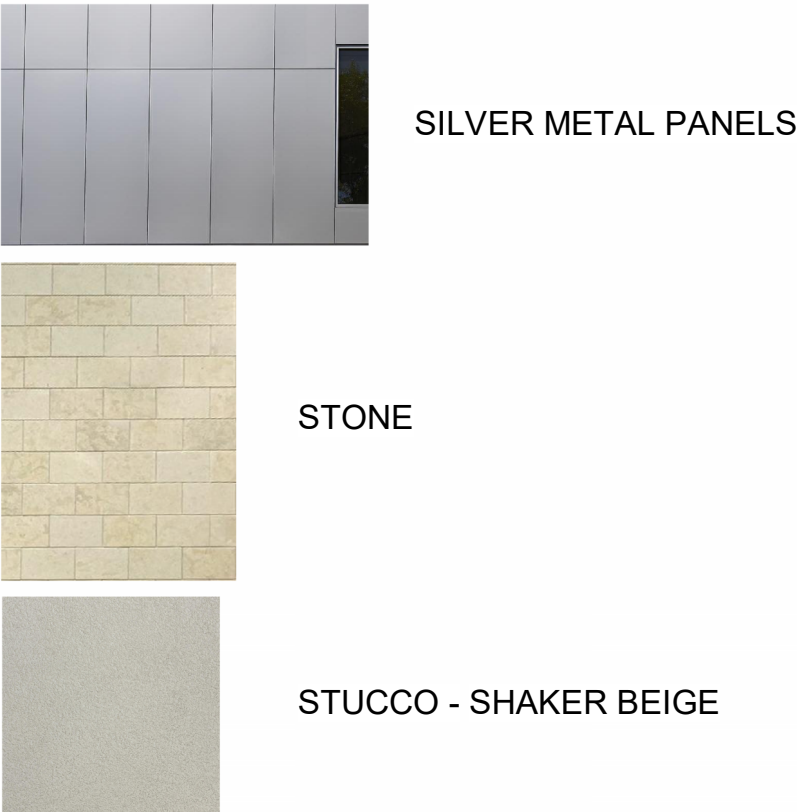
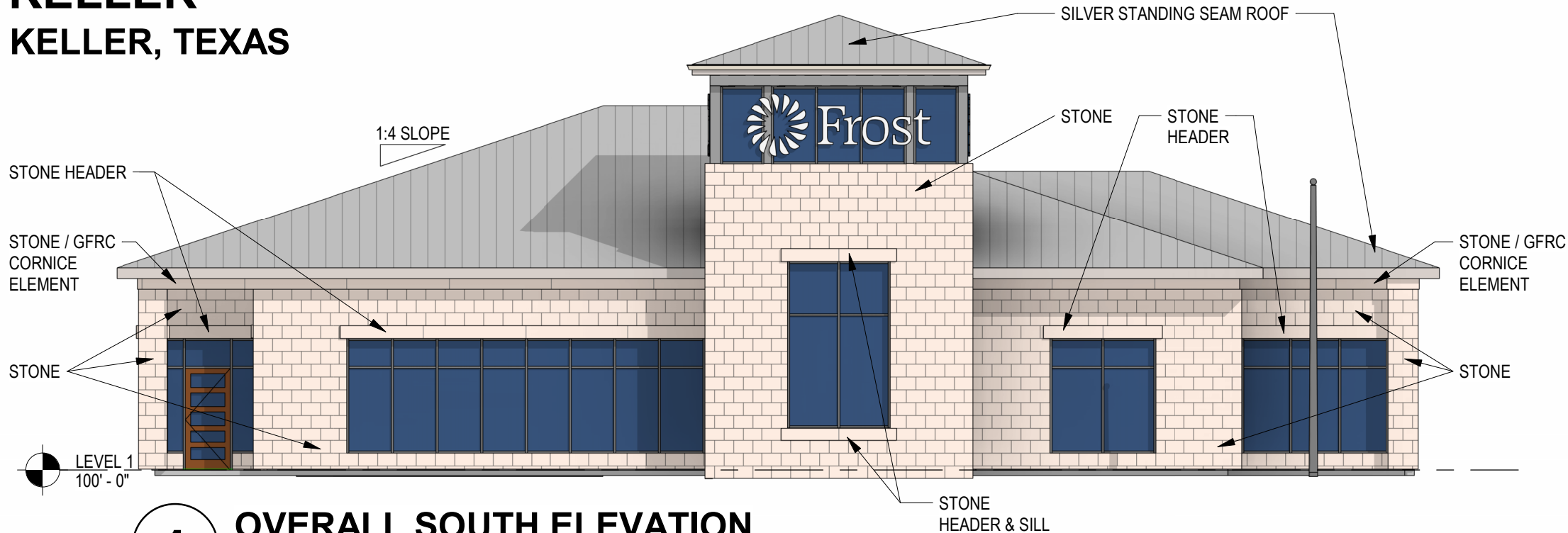
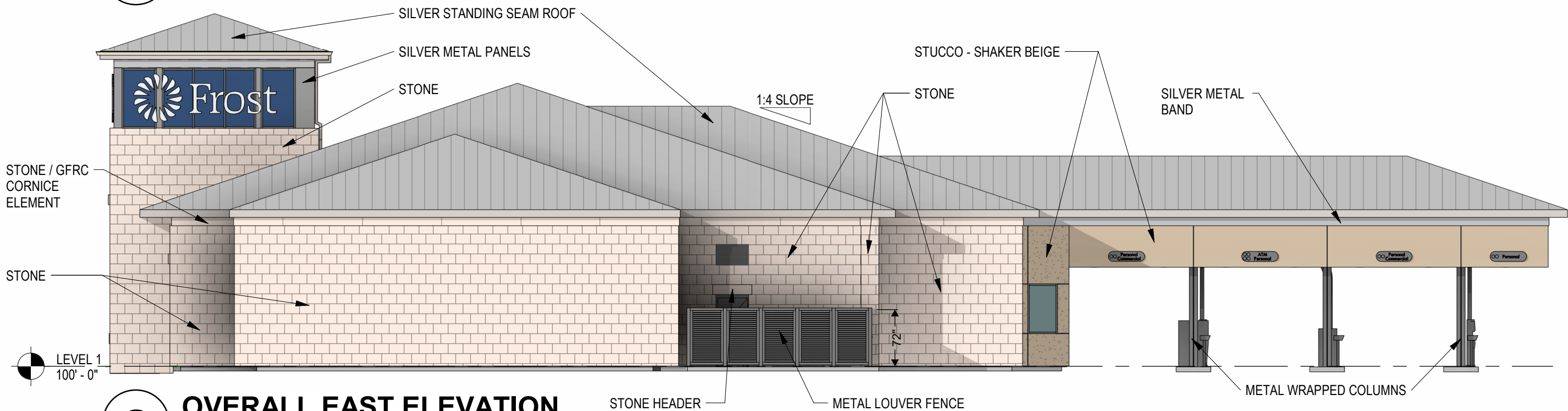


00000
FROST BANK
KELLER
KELLER, TEXAS



1 OVERALL SOUTH ELEVATION
3/32" = 1'-0"



2 OVERALL EAST ELEVATION
3/32" = 1'-0"

This Building Information Model and the information contained herein are provided by Grace Design Studios for the purposes of coordination and design only. The use of this model for any purpose other than its intended use is done so at the risk of the user. The model may be used by the contractor to gain a greater understanding of the relationships between systems and the design intent, but the model does not supersede the construction documents. The contractor is not entitled to rely upon quantity takeoffs generated from the model. Grace Design Studios retains ownership of all designs, model elements, and other digital data contained herein, which may not be used without the prior written consent of Grace Design Studios.

00000
FROST BANK
KELLER
KELLER, TEXAS



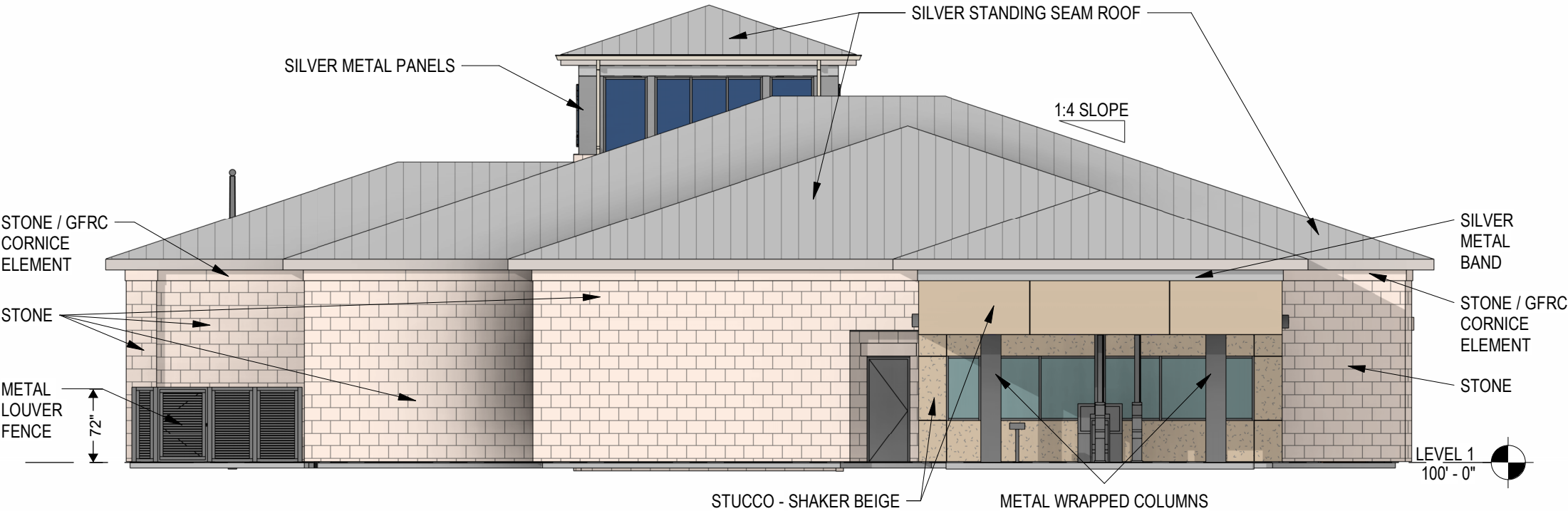
SILVER METAL PANELS



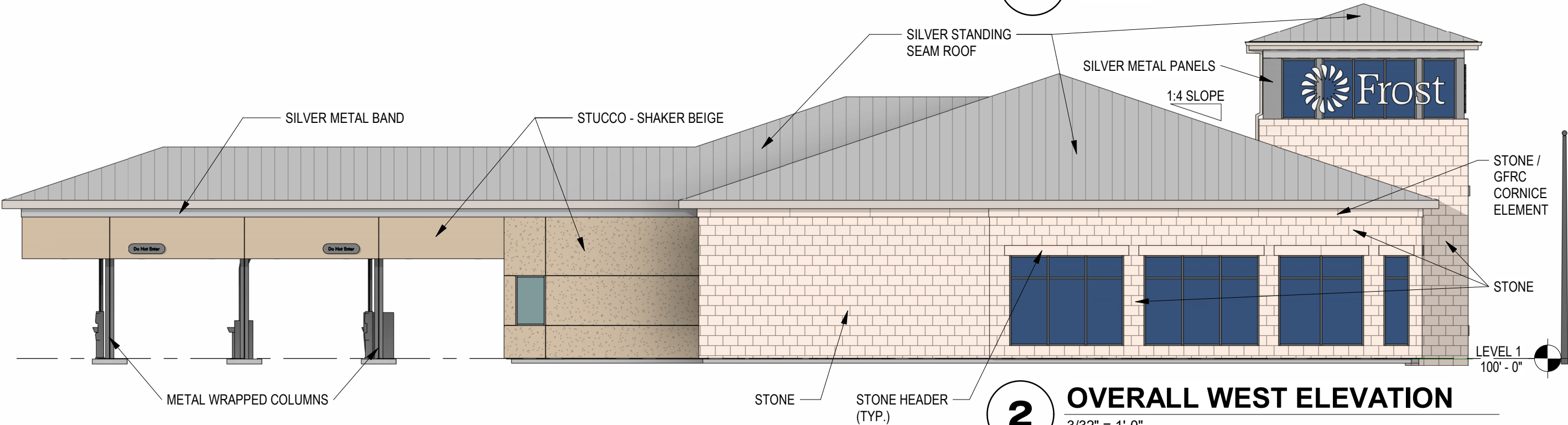
STONE



STUCCO - SHAKER BEIGE



1 OVERALL NORTH ELEVATION
3/32" = 1'-0"



2 OVERALL WEST ELEVATION
3/32" = 1'-0"

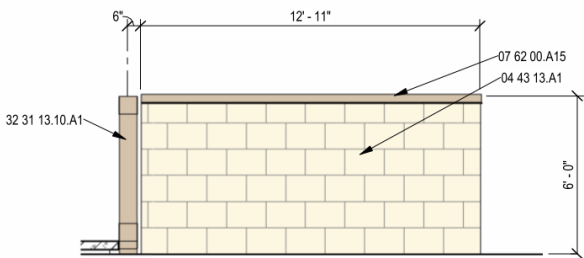
This Building Information Model and the information contained herein are provided by Grace Design Studios for the purposes of coordination and design only. The use of this model for any purpose other than its intended use is done so at the risk of the user. The model may be used by the contractor to gain a greater understanding of the relationships between systems and the design intent, but the model does not supersede the construction documents. The contractor is not entitled to rely upon quantity takeoffs generated from the model. Grace Design Studios retains ownership of all designs, model elements, and other digital data contained herein, which may not be used without the prior written consent of Grace Design Studios.

00000

FROST BANK

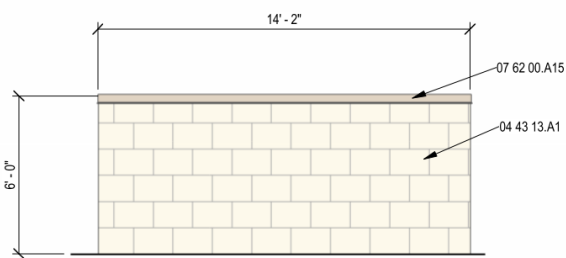
KELLER

KELLER, TEXAS



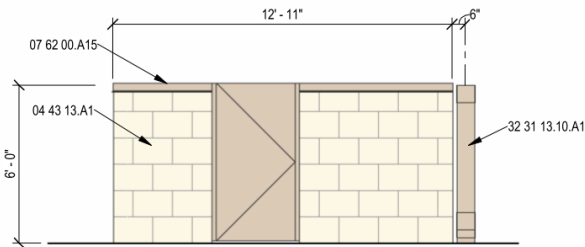
6 DUMPSTER ELEVATION

1/4" = 1'-0"



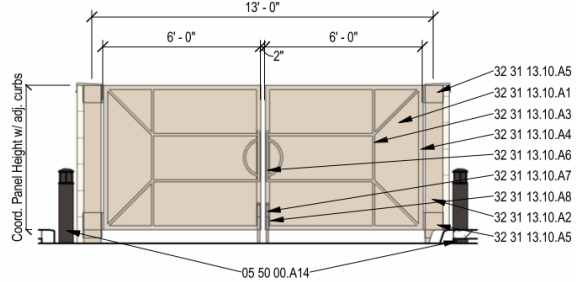
5 DUMPSTER ELEVATION

1/4" = 1'-0"



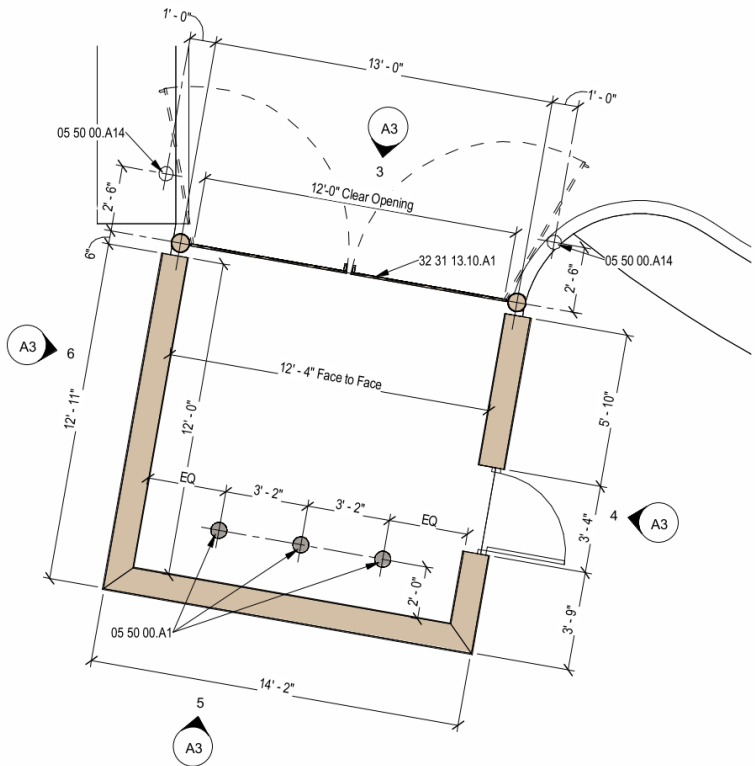
4 DUMPSTER ELEVATION

1/4" = 1'-0"



3 DUMPSTER ELEVATION

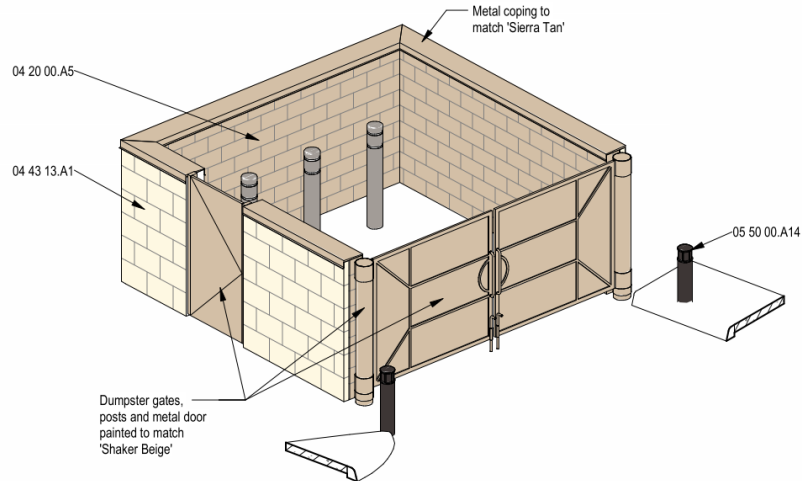
1/4" = 1'-0"



2 DUMPSTER ENCLOSURE PLAN

1/4" = 1'-0"

NOTE: ORIENTATION T.B.D. BASED ON APPROVED SITE CONFIGURATION



1 DUMPSTER ENCLOSURE - 3D VIEW

KEYNOTES	
04 20 00.A5	8" concrete masonry unit; finish exposed faces to match Benjamin Moore HC-45 Shaker Beige.
04 43 13.A1	Stone veneer.
05 50 00.A1	6" diameter concrete filled steel pipe bollard.
05 50 00.A14	Crash-rated cast aluminum bollard; Jefferson Bollard by Conceptual Site Furnishings, color RAL 8019-138.
07 62 00.A15	Prefinished sheet metal coping.
32 31 13.10.A1	Sheet metal dumpster gates; powdercoat to match Benjamin Moore HC-45 Shaker Beige.
32 31 13.10.A2	8" diameter concrete-filled steel pipe support; powdercoat to match Benjamin Moore HC-45 Shaker Beige.
32 31 13.10.A3	TS1x2 supports, typical; finish to match.
32 31 13.10.A4	TS2x2 perimeter, typical; finish to match.
32 31 13.10.A5	Steel collar, welded to pipe support; finish to match.
32 31 13.10.A6	1" diameter steel pulls, welded to frame; finish to match.
32 31 13.10.A7	1" diameter steel cane with 1-1/2" deep sleeve in concrete pad at Closed and Open positions; finish to match.
32 31 13.10.A8	Steel plate for cane stop (each gate); finish to match.

Frost Bank - Keller

Building Material Percentages

	North		South		East		West		Total	
Material	sf	%	sf	%	sf	%	sf	%	sf	%
Masonry										
Stone	923	66.5%	1034	92.0%	1381	76.5%	907	58.8%	4245	72.4%
GFRC/Cast Stone	60	4.3%	72	6.4%	82	4.5%	87	5.6%	301	5.1%
Sub-total	983	70.8%	1106	98.4%	1463	81.0%	994	64.5%	4546	77.6%
Other										
Stucco	279	20.1%	0	0.0%	268	14.8%	473	30.7%	1020	17.4%
Metal	126	9.1%	18	1.6%	75	4.2%	75	4.9%	294	5.0%
Sub-total	405	29.2%	18	1.6%	343	19.0%	548	35.5%	1314	22.4%
Total	1388	100.0%	1124	100.0%	1806	100.0%	1542	100.0%	5860	100.0%
Opening	240		703		146		413		1502	

Note: Metal category calculates wall surface only, no roof surface.