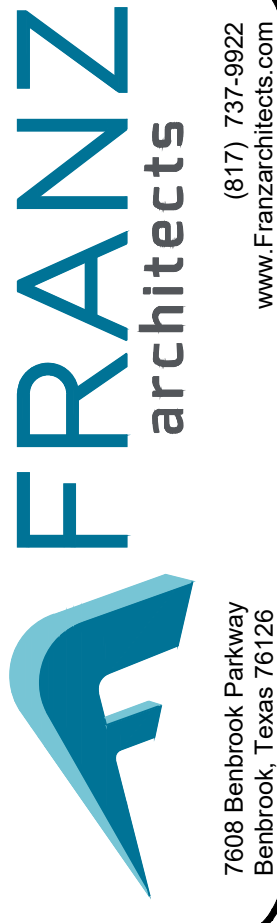


PRELIMINARY
NOT TO BE USED
FOR
REGULATORY
APPROVAL,
PERMITTING OR
CONSTRUCTION



SHELL BUILDING
FM 1709 KELLER-SMITHFIELD ROAD
KELLER, TX

Revisions:

| | | | | |
|-----------------------|-------------------|----------------|---------------|----------------|
| File Name: 24182-A2.1 | Project No: 24182 | Date: 11/11/24 | Drawn By: JLB | Checked By: TI |
|-----------------------|-------------------|----------------|---------------|----------------|

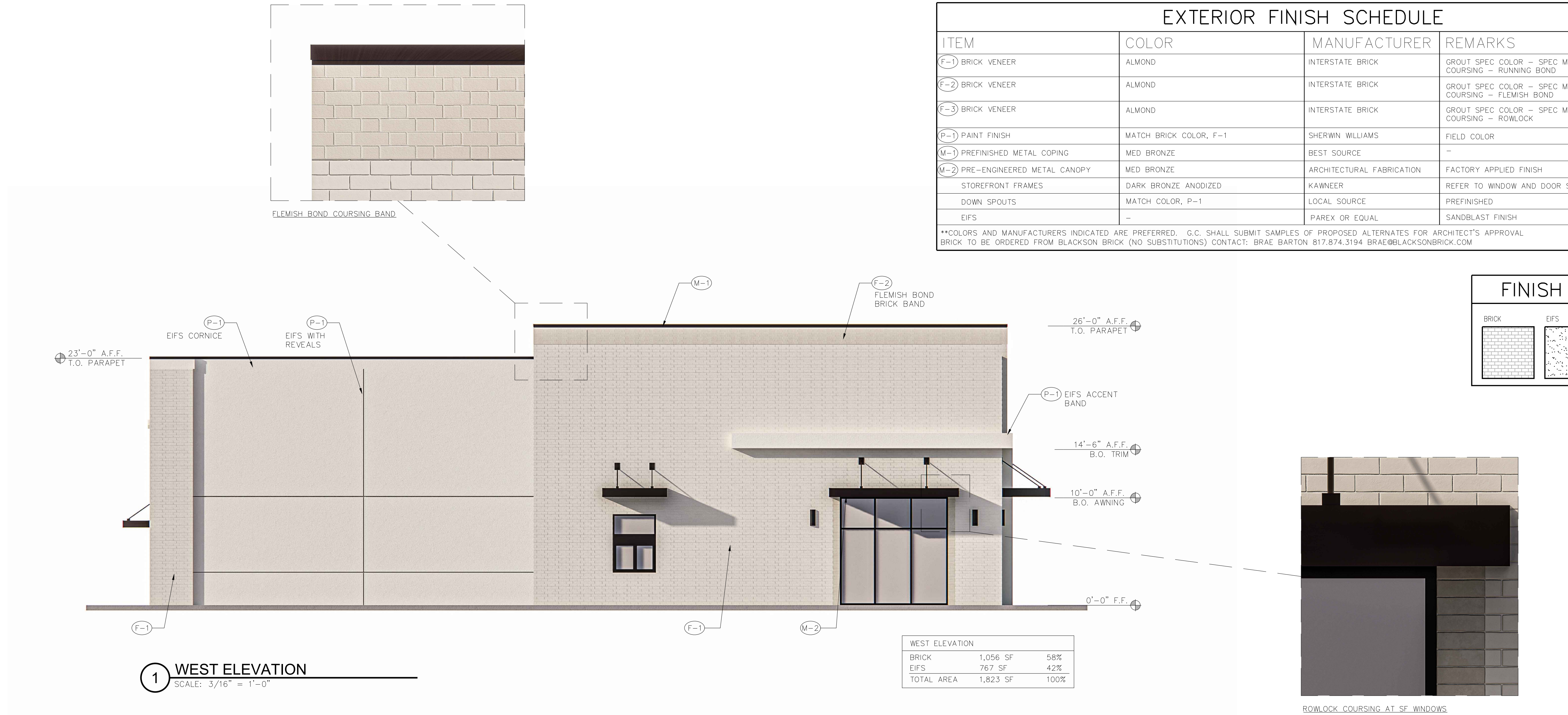
SHEET
A2.1
EXTERIOR
ELEVATIONS

EXTERIOR FINISH SCHEDULE

| ITEM | COLOR | MANUFACTURER | REMARKS |
|----------------------------------|------------------------|---------------------------|--|
| F-1) BRICK VENEER | ALMOND | INTERSTATE BRICK | GROUT SPEC COLOR - SPEC MIX, SM750 SILVERSTONE COURSING - RUNNING BOND |
| F-2) BRICK VENEER | ALMOND | INTERSTATE BRICK | GROUT SPEC COLOR - SPEC MIX, SM750 SILVERSTONE COURSING - FLEMISH BOND |
| F-3) BRICK VENEER | ALMOND | INTERSTATE BRICK | GROUT SPEC COLOR - SPEC MIX, SM750 SILVERSTONE COURSING - ROWLOCK |
| P-1) PAINT FINISH | MATCH BRICK COLOR, F-1 | SHERWIN WILLIAMS | FIELD COLOR |
| M-1) PREFINISHED METAL COPING | MED BRONZE | BEST SOURCE | - |
| M-2) PRE-ENGINEERED METAL CANOPY | MED BRONZE | ARCHITECTURAL FABRICATION | FACTORY APPLIED FINISH |
| STOREFRONT FRAMES | DARK BRONZE ANODIZED | KAWNEER | REFER TO WINDOW AND DOOR SCHEDULE |
| DOWN SPOUTS | MATCH COLOR, P-1 | LOCAL SOURCE | PREFINISHED |
| EIFS | - | PAREX OR EQUAL | SANDBLAST FINISH |

**COLORS AND MANUFACTURERS INDICATED ARE PREFERRED. G.C. SHALL SUBMIT SAMPLES OF PROPOSED ALTERNATES FOR ARCHITECT'S APPROVAL. BRICK TO BE ORDERED FROM BLACKSON BRICK (NO SUBSTITUTIONS) CONTACT: BRAE BARTON 817.874.3194 BRAE@BLACKSONBRICK.COM

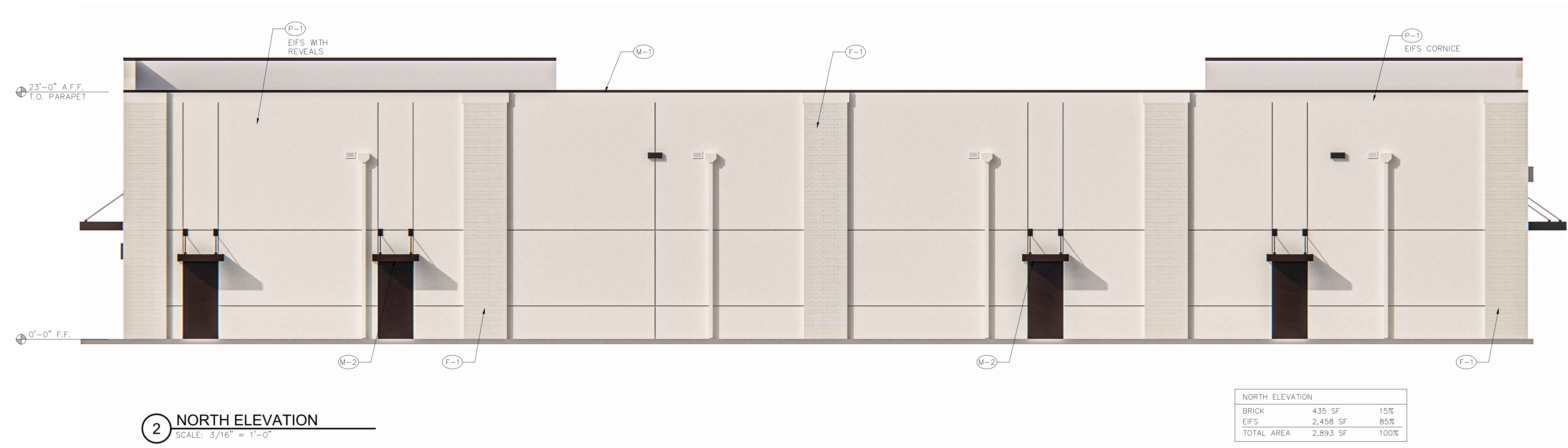
FINISH LEGEND



1 WEST ELEVATION
SCALE: 3/16" = 1'-0"

WEST ELEVATION

| | | |
|------------|----------|------|
| BRICK | 1,056 SF | 58% |
| EIFS | 767 SF | 42% |
| TOTAL AREA | 1,823 SF | 100% |



2 NORTH ELEVATION
SCALE: 3/16" = 1'-0"

NORTH ELEVATION

| | | |
|------------|----------|------|
| BRICK | 435 SF | 15% |
| EIFS | 2,458 SF | 85% |
| TOTAL AREA | 2,893 SF | 100% |