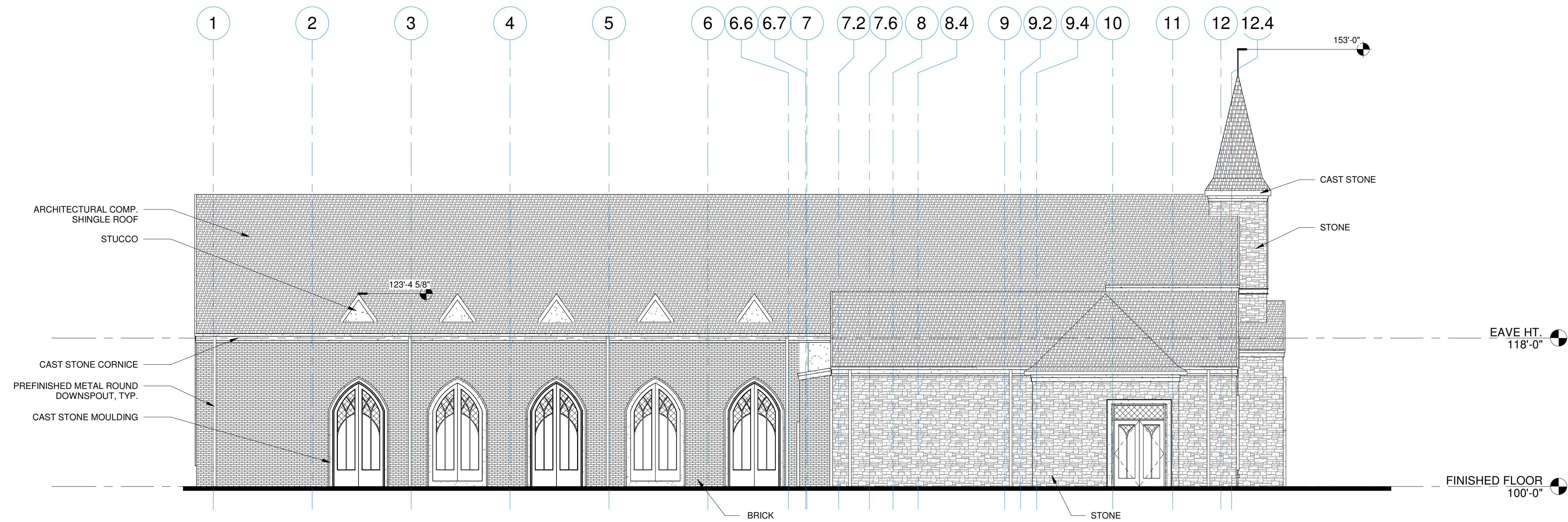
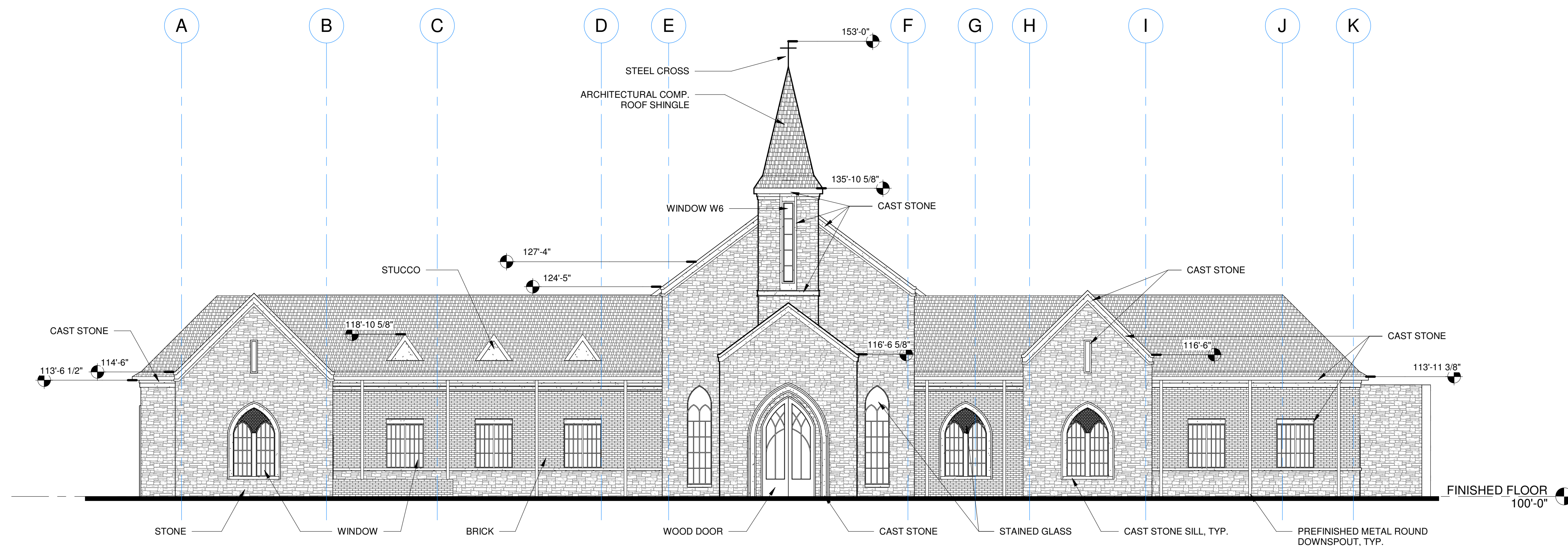


Revision Schedule		
Rev. #	Revision Description	Revision Date



**2** NORTH ELEVATION

**A310** 1/8" = 1'-0"



**1** WEST ELEVATION

**A310** 1/8" = 1'-0"

NOT TO BE USED FOR PERMITTING  
OR CONSTRUCTION

ANDREW OXLEY

THE ARCHITECT AND THE ARCHITECTS CONSULTANTS SHALL BE SEENED THE AUTHOR AND OWNER OF THEIR RESPECTIVE INSTRUMENTS OF SERVICE, INCLUDING THE DRAWINGS AND SPECIFICATIONS, AND SHALL RETAIN ALL COMMON LAW, STATUTORY AND OTHER RESERVED RIGHTS, INCLUDING COPYRIGHTS. SUBMISSION OF THIS DRAWING OR INSTRUMENT OF SERVICE TO ANY OTHER PARTY, INCLUDING ANY REQUIREMENTS OR FOR SIMILAR PURPOSES IN CONNECTION WITH THE PROJECT IS NOT TO BE CONSIDERED AS PUBLICATION OR DEROGATION OF THE RESERVED RIGHTS OF THE ARCHITECT AND THE ARCHITECTS CONSULTANTS. INSTRUMENTS OF SERVICE, INCLUDING DRAWINGS, SPECIFICATIONS AND DOCUMENTS IN ELECTRONIC FORM PREPARED BY OXLEY ARCHITECTS, PLLC ARE FOR USE SOLELY WITH RESPECT TO THIS PROJECT. THE INSTRUMENTS OF SERVICE SHALL NOT BE USED BY THE OWNER WITHOUT THE PRIOR WRITTEN APPROVAL OF OXLEY ARCHITECTS, PLLC. USE OF THE INSTRUMENTS OF SERVICE WITHOUT WRITTEN PERMISSION SHALL BE WITHOUT LIABILITY TO OXLEY ARCHITECTS, PLLC AND ITS CONSULTANTS.

**MILESTONE CHAPEL**

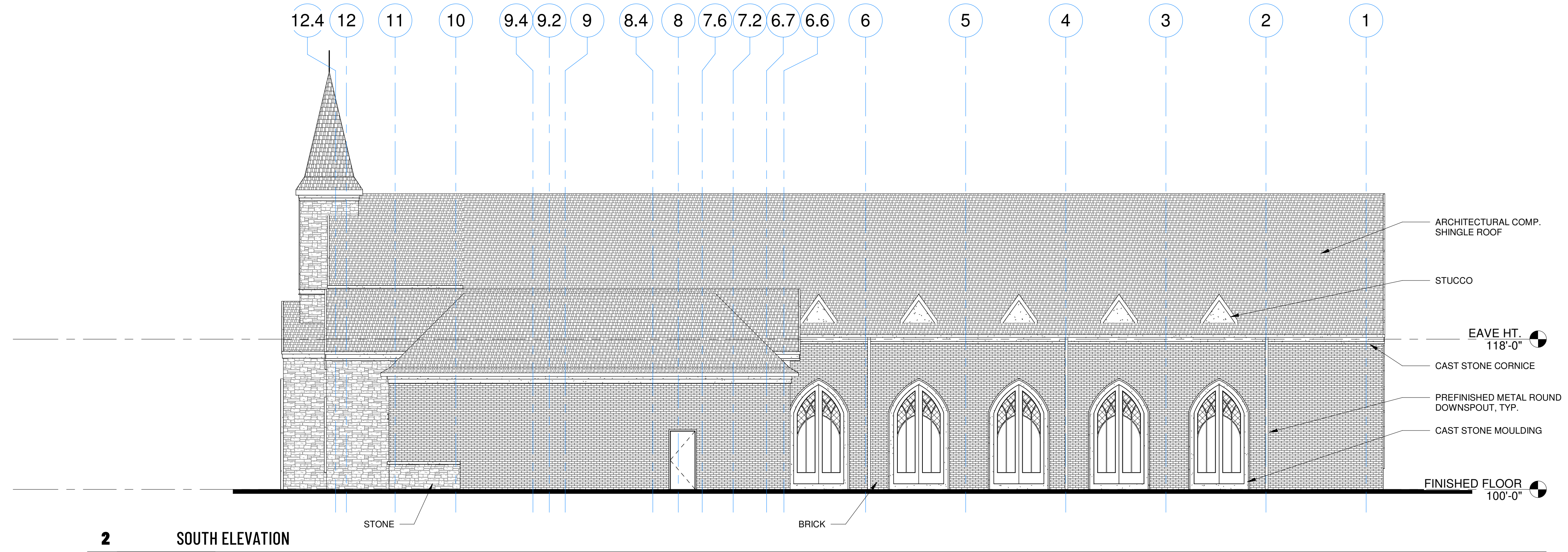
201 MOUNT GILEAD ROAD  
KELLER, TEXAS 76248

2023.008  
OCTOBER 30, 2023

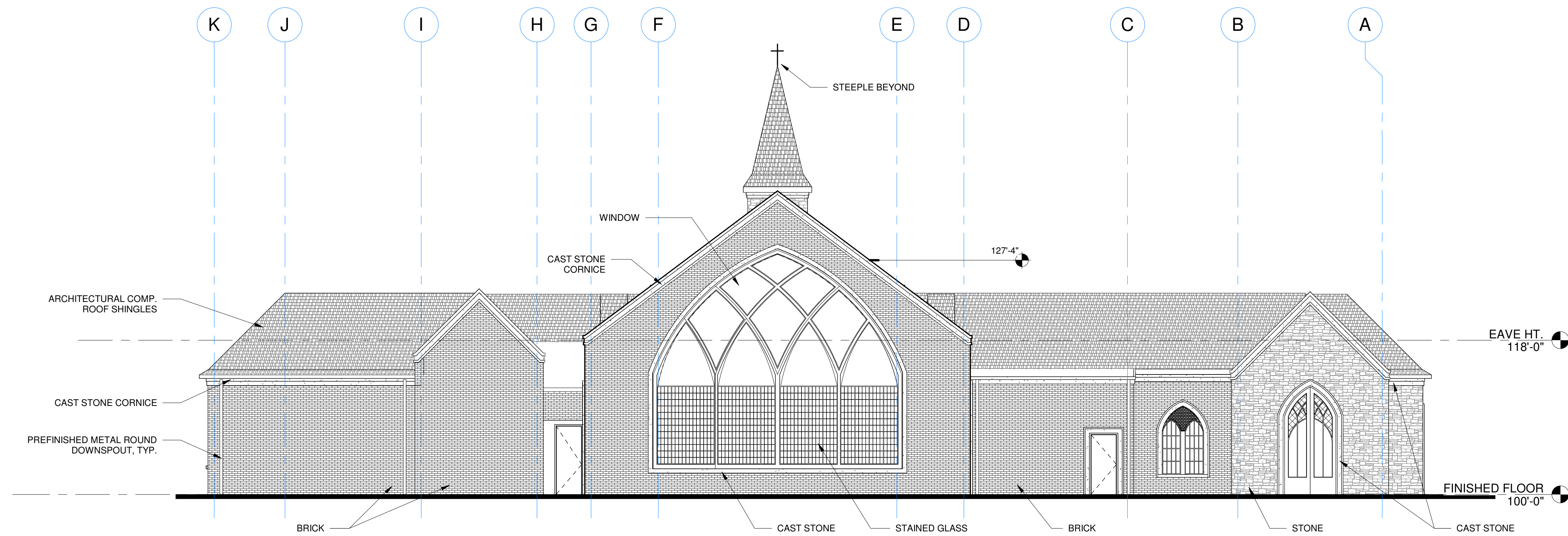
EXTERIOR ELEVATIONS



Revision Schedule		
Rev. #	Revision Description	Revision Date



**2** SOUTH ELEVATION  
**A311** 1/8" = 1'-0"



**1** EAST ELEVATION  
**A311** 1/8" = 1'-0"

NOT TO BE USED FOR PERMITTING  
OR CONSTRUCTION

ANDREW OXLEY

THE ARCHITECT AND THE ARCHITECT'S CONSULTANTS SHALL BE SEENED THE AUTHOR AND OWNER OF THEIR RESPECTIVE INSTRUMENTS OF SERVICE, INCLUDING THE DRAWINGS AND SPECIFICATIONS, AND SHALL RETAIN ALL COMMON LAW, STATUTORY AND OTHER RESERVED RIGHTS, INCLUDING COPYRIGHTS. SUBMISSION OR DISTRIBUTION OF INSTRUMENTS OF SERVICE TO ANY OTHER PARTY, INCLUDING ANY OTHER ARCHITECTS, ENGINEERS, CONTRACTORS OR OTHER PROFESSIONALS, WITHOUT THE WRITTEN APPROVAL OF OXLEY ARCHITECTS, PLLC, IS STRICTLY PROHIBITED. REGULARITY OF INSTRUMENTS OF SERVICE SHALL BE THE RESPONSIBILITY OF THE ARCHITECT AND THE ARCHITECT'S CONSULTANTS. INSTRUMENTS OF SERVICE, INCLUDING DRAWINGS, SPECIFICATIONS AND DOCUMENTS IN ELECTRONIC FORM PREPARED BY OXLEY ARCHITECTS, PLLC, ARE FOR USE SOLELY WITH RESPECT TO THIS PROJECT. THE INSTRUMENTS OF SERVICE SHALL NOT BE USED BY THE OWNER WITHOUT THE PRIOR WRITTEN APPROVAL OF OXLEY ARCHITECTS, PLLC. USE OF THE INSTRUMENTS OF SERVICE WITHOUT WRITTEN PERMISSION SHALL BE WITHOUT LIABILITY TO OXLEY ARCHITECTS, PLLC AND ITS CONSULTANTS.

**MILESTONE CHAPEL**

201 MOUNT GILEAD ROAD  
KELLER, TEXAS 76248

2023.008  
OCTOBER 30, 2023

EXTERIOR ELEVATIONS