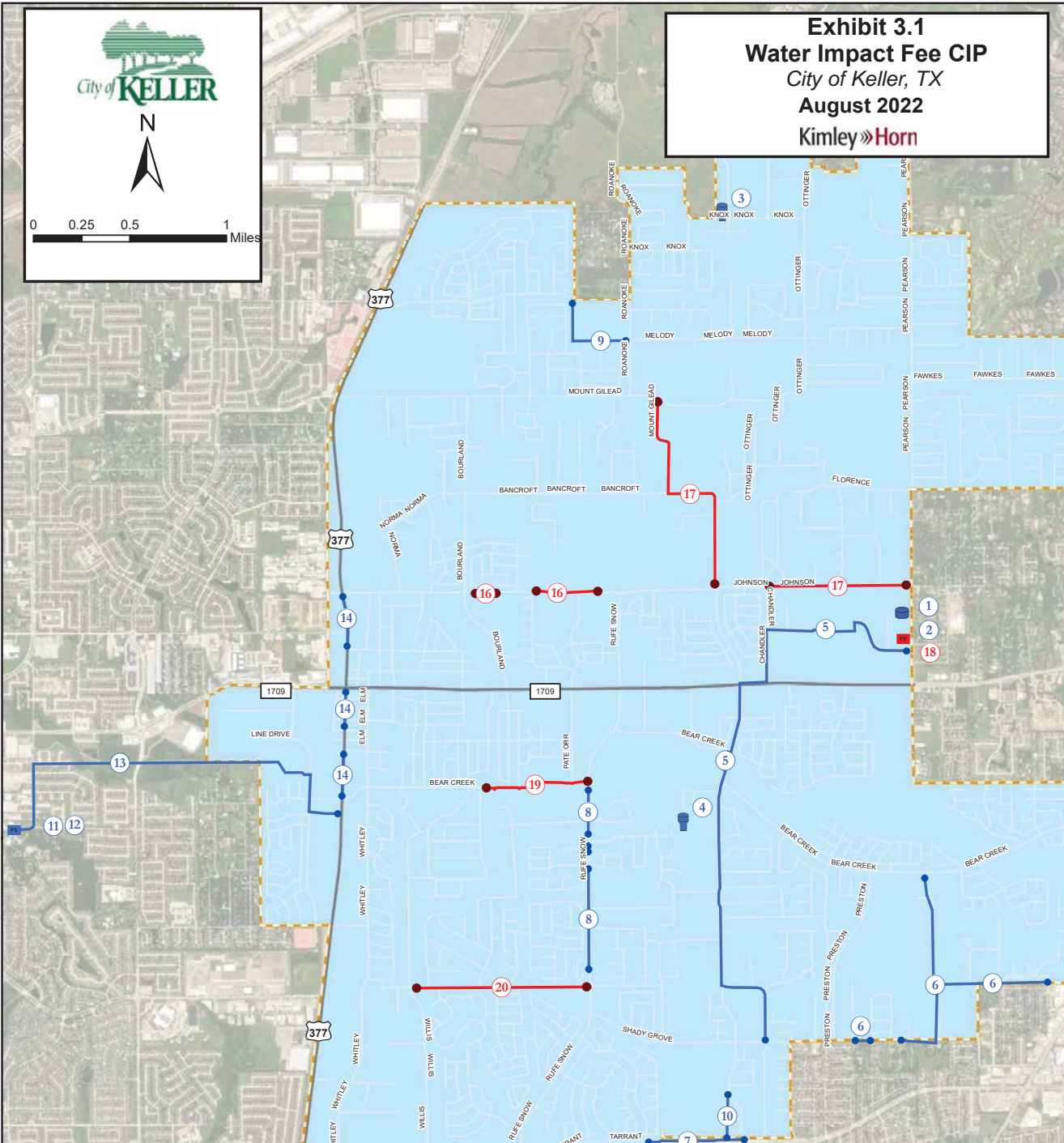




0 0.25 0.5 1 Miles

Exhibit 3.1
Water Impact Fee CIP
 City of Keller, TX
 August 2022
 Kimley»Horn



Existing Facility	
Project Number	Project Description (Approximate Limits)
1	3.0 MG Pearson Ground Storage Tank
2	Pearson Pump Station Improvements
3	Knox Elevated Storage Tank
4	Keller-Smithfield Elevated Storage Tank
5	16-inch Lower Pressure Plane Water Line (Shady Grove Rd to N Pearson Ln)
6	12-inch Lower Pressure Plane Water Line (Buckner Ln to Blue Ridge Rd; Franklin Rd to Bear Creek Pkwy; Indian Knoll Trail through Clay Hibbins Rd)
7	12-inch Upper Pressure Plane Water Line (N Tarrant Pkwy to Cat Mtn Trl)
8	12-inch Rufe Snow Water Line (Bear Creek Pkwy to Verona Way)
9	12-inch Upper Pressure Plane Water Line (Near Northern Trace to Melody Ln)
10	12-Inch Water Lines in Upper Pressure Plane (Wilson Ln to Silverleaf Dr)
11	Alta Vista Pump Station Expansion to 18 MGD
12	Fort Worth Water Delivery Capital Cost Recovery
13	30-inch Alta Vista Pump Station Water Line (Alta Vista Rd, Fort Worth to S Main St)
14	12-inch Water Lines in Upper Pressure Plane (Big Bear Creek Rd to Pecan St; W Batest St to Keller Pkwy; Lorine St to Johnson Rd)
15	Water Impact Fee Study Update (Not Shown on Map)

Proposed 2021-2031 Facilities		
Project Number	2021 Master Plan Project Number	Project Description (Approximate Limits)
16	2	12-inch Johnson Road Water Line (Bourland Rd to N Rufe Snow Dr)
17	4	16-inch Mt Gilead and Ottinger Rd and 16-inch Johnson Rd Water Line (Robin Dr to N Pearson Ln)
18	5	Pearson Pump Station Upper Pressure Plane Expansion
19	1	12-Inch Bear Creek Parkway Water Line (Elaine St to Rufe Snow Dr)
20	3	16-inch Rapp Road Water Line (Shady Lane N to Rufe Snow Dr)

Legend

- Existing Elevated Storage Tank
- Existing Ground Storage Tank
- Existing Sewer Line
- Existing Facility Project Label
- Existing Pump Station
- Proposed 2021-2031 Pump Station
- Proposed 2021-2031 Water Line
- Proposed Facility Project Label
- City Limits
- Water Service Area

Source: Esri, Maxar, GeoEye, Earthstar Geographics, CNES/Airbus DS, USDA, USGS, AeroGRID, IGN, and the GIS