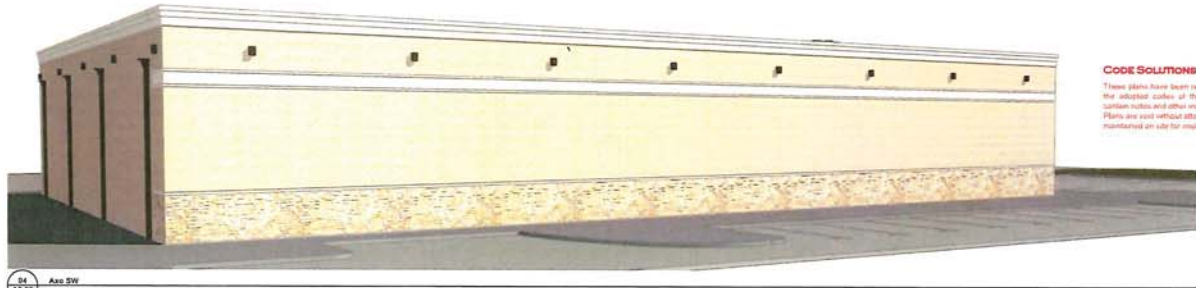




01 A3.02
A3.02
SCALE: 1:102.81



02 A3.02
A3.02
SCALE: 1:102.55



04 A3.02
A3.02
SCALE: 1:102.22

CODE SOLUTIONS INC.
 These plans have been reviewed for compliance with the adopted codes of the jurisdiction. Plans may contain notes and other instructions for inspector's use. Plans are not without attached notes. Plans are to be maintained on site for inspector's use only.



03 A3.02
A3.02
SCALE: 1:91.55

Total Material Calculations Goody Goody Keller			01 South Elevation (front)		02 North Elevation (rear)		03 West Elevation (left)		04 East Elevation (right)		Totals		Masonry Totals	
Material	Mfg.	Color	Area	Percentage	Area	Percentage	Area	Percentage	Area	Percentage	Area	Percentage	Area	Percentage
stone veneer 1	Custom Stone	Goody Natural Chopped Blend	794	22.5%	649	18.2%	87	2.2%	431	19.5%	1,871	16.2%		
cast stone	Texas Bldg Products	Spindy White	47	1.3%	39	1.2%	8	0.2%	30	1.4%	122	1.1%		
brick veneer	Acme	Spandibrook	2,342	66.2%	1,729	47.8%	2,561	66.4%	1,119	51.7%	7,674	66.5%		63.8%
metal siding	Beridge	Classic Green	0	0.0%	589	11.8%	0	0.0%	279	12.8%	848	7.6%		
metal coping	Uni Clad	Sandstone	75	2.1%	75	2.4%	33	1.0%	33	1.5%	246	2.2%		
EIFS (coping)	Dryvit	SW Ivory Lace (match)	272	7.7%	272	8.7%	225	8.3%	194	9.0%	963	8.3%		
Totals			3,530	100.0%	3,123	100.0%	2,725	100.0%	2,196	100.0%	11,534	100.0%		83.8%



GOODY GOODY
 KELLER, TX

Goody Goody
 Construction Documents
 Keller, Texas

Reviewed by:
 Inspected based on
 City of Keller Plan
 Review



A3.02

30 Sep 2021



GOODY GOODY
Keller, TX

Goody Goody
Construction Documents
Keller, Texas

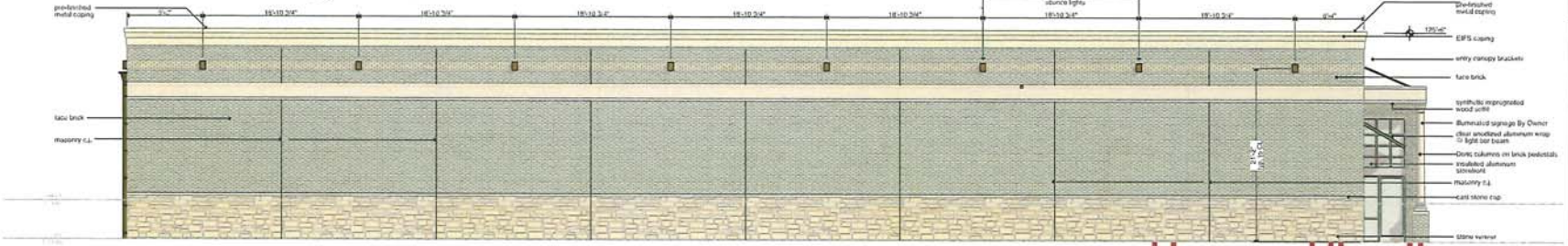
Revisions:
 A revisions based on City of Keller Plan Review
 B revisions based on RTU submittal



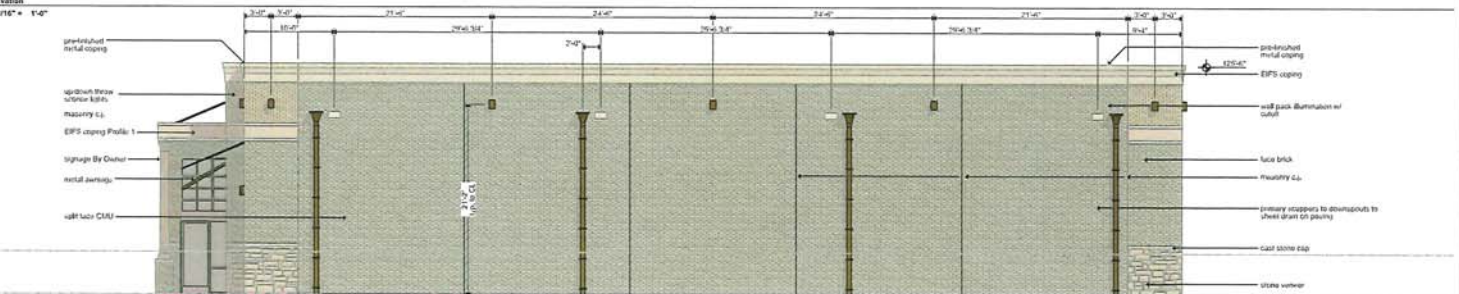
A3.01
11 Oct 2021



01 East Elevation
SCALE: 3/16" = 1'-0"



02 South Elevation
SCALE: 3/16" = 1'-0"



03 West Elevation
SCALE: 3/16" = 1'-0"



04 North Elevation
SCALE: 3/16" = 1'-0"

Total Material Calculations Goody Goody Keller			01 South Elevation (front)		02 North Elevation (rear)		03 West Elevation (left)		04 East Elevation (right)		Totals		Masonry Totals	
Material	Mfg.	Color	Area	Percentage	Area	Percentage	Area	Percentage	Area	Percentage	Area	Percentage	Area	Percentage
stone veneer 1	Custom Stone	Granbury Natural Chopped Blend	794	25.5%	569	18.2%	87	3.2%	471	19.5%	1,871	16.7%		
cast stone	Texas Blog Products	Sandy White	47	1.3%	39	1.2%	6	0.2%	30	1.4%	122	1.1%		
brick veneer	Acme	Saddlebrook	3,347	66.3%	1,799	57.6%	2,351	86.4%	1,179	54.7%	7,674	66.5%		
metal awning	Bambridge	Classic Green	0	0.0%	549	11.8%	0	0.0%	276	12.8%	848	7.5%		83.8%
metal coping	Ury Clad	Sandstone	75	2.1%	75	2.4%	53	1.9%	53	2.5%	256	2.2%		
EPS coping	Drivet	SW Ivory Lace (match)	272	7.3%	272	8.7%	225	8.3%	194	9.0%	963	8.3%		
Totals			3,500	100.0%	3,123	100.0%	2,725	100.0%	2,156	100.0%	11,534	100.0%		



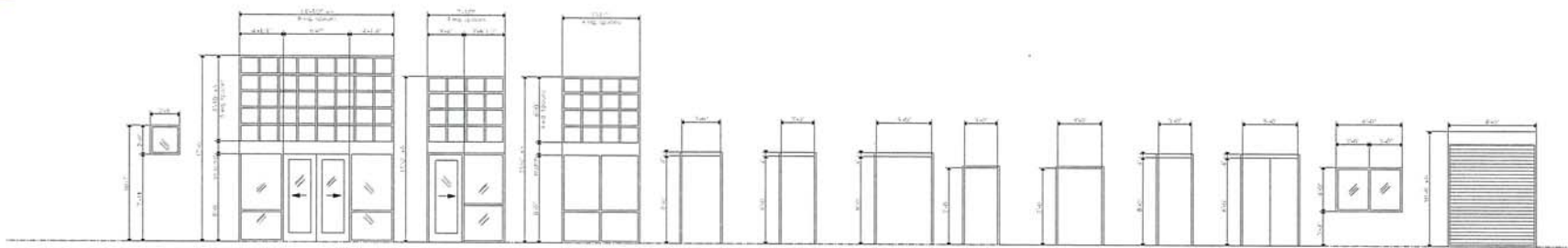
GOODY GOODY
Keller, TX

Goody Goody
Construction Documents
Keller, Texas

Permitted
Reviews based on
City of Keller Plan
Review



A3.03
30 Sep 2022



Aluminum Storefront & HM 2018 IECC Compliance Requirements:
Equal to US Aluminum #1T451 (2" x 4 1/2") Center Glazing System, reinforced as required by glass area, clear anodized finish, w/ PPG Solarban 70XL Low E Insulated Glass w/ Clear Tint or equal, thermally broken.
1. All framing/glazing systems to be compliant with IECC 2018
2. All storefront glazing to be insulated, thermally broken, clear tint with Low E coating; 0.46 U Factor with 0.25 SHGC (SEW) 0.33 (H)
3. All storefront doors to be:
0.77 U Factor with 0.25 SHGC (SEW) 0.33 (H)
4. All HM Doors to be insulated with galvanized frame; 0.66 U Factor

Aluminum Storefront & HM 2015 IECC Compliance Requirements:
TYPE 1
All systems are TYPE 1 unless noted otherwise:
Equal to US Aluminum #1T451 (2" x 4 1/2") Center Glazing System, reinforced as required by glass area, clear anodized finish, w/ PPG Solarban 70XL Low E Insulated Glass w/ Clear Tint or equal, thermally broken.
TYPE 2
Equal to US Aluminum CurtainWall (2.5" x 6") Center Glazing System, reinforced as required by glass area, clear anodized finish, w/ PPG Solarban 70XL Low E Insulated Glass w/ Clear Tint or equal, thermally broken.

01 Door Frame Storefront Elevations
SCALE: 1/4" = 1'-0"

EXIT DOORS SHALL OPEN FROM THE INSIDE WITHOUT THE USE OF A KEY OR ANY SPECIAL KNOWLEDGE OR EFFORT

CODE SOLUTIONS INC.
These plans have been reviewed for compliance with the adopted code of this jurisdiction. There may contain notes and other instructions for inspectors use. Plans are void without attached notes. Plans are to be maintained on site for inspectors use only.