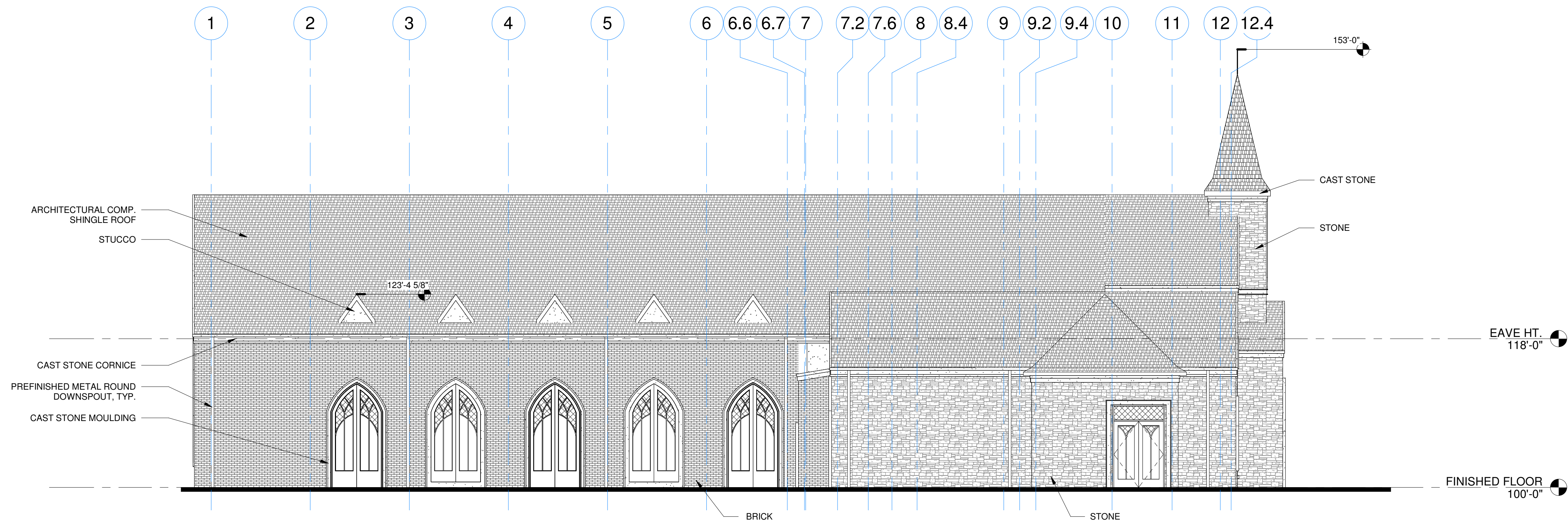
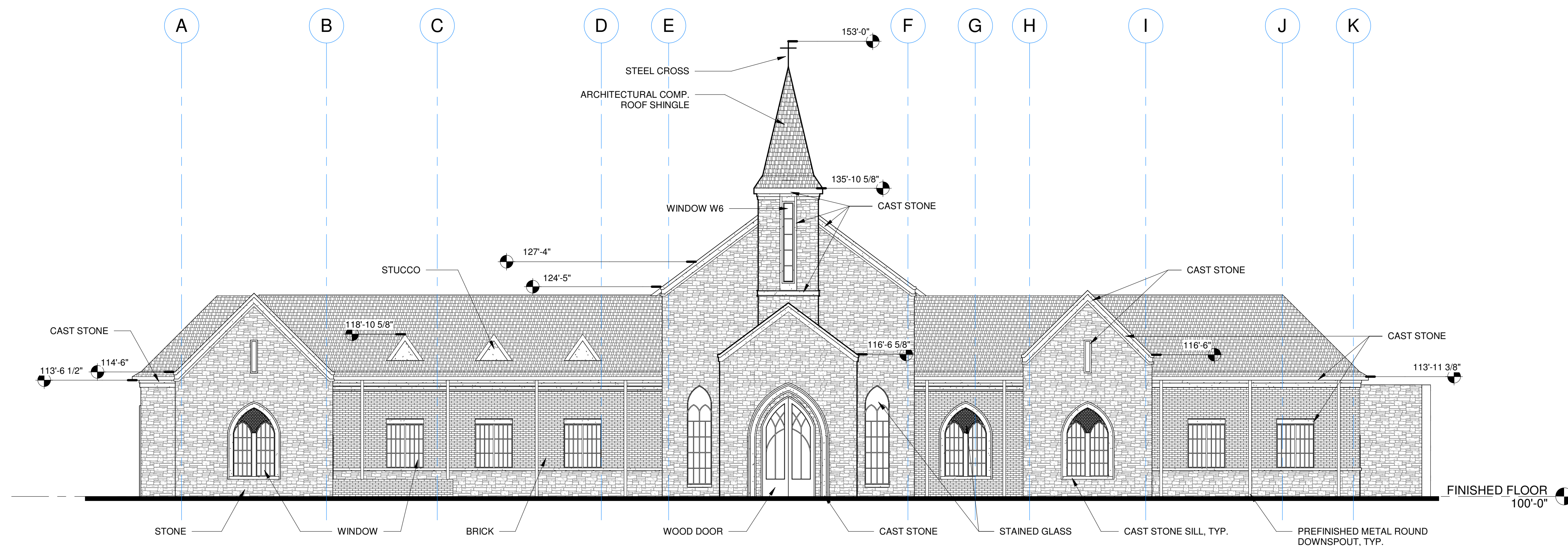


Revision Schedule		
Rev. #	Revision Description	Revision Date



2 NORTH ELEVATION

A310 1/8" = 1'-0"



1 WEST ELEVATION

A310 1/8" = 1'-0"

NOT TO BE USED FOR PERMITTING
OR CONSTRUCTION

ANDREW OXLEY

THE ARCHITECT AND THE ARCHITECTS CONSULTANTS SHALL BE SEENED THE AUTHOR AND OWNER OF THEIR RESPECTIVE INSTRUMENTS OF SERVICE, INCLUDING THE DRAWINGS AND SPECIFICATIONS, AND SHALL RETAIN ALL COMMON LAW, STATUTORY AND OTHER RESERVED RIGHTS, INCLUDING COPYRIGHTS. SUBMISSION OF THIS DRAWING OR INSTRUMENT OF SERVICE TO ANY OTHER PARTY, INCLUDING ANY REQUIREMENTS OR FOR SIMILAR PURPOSES IN CONNECTION WITH THE PROJECT IS NOT TO BE CONSIDERED AS PUBLICATION OR DEROGATION OF THE RESERVED RIGHTS OF THE ARCHITECT AND THE ARCHITECTS CONSULTANTS. INSTRUMENTS OF SERVICE, INCLUDING DRAWINGS, SPECIFICATIONS AND DOCUMENTS IN ELECTRONIC FORM PREPARED BY OXLEY ARCHITECTS, PLLC ARE FOR USE SOLELY WITH RESPECT TO THIS PROJECT. THE INSTRUMENTS OF SERVICE SHALL NOT BE USED BY THE OWNER WITHOUT THE PRIOR WRITTEN APPROVAL OF OXLEY ARCHITECTS, PLLC. USE OF THE INSTRUMENTS OF SERVICE WITHOUT WRITTEN PERMISSION SHALL BE WITHOUT LIABILITY TO OXLEY ARCHITECTS, PLLC AND ITS CONSULTANTS.

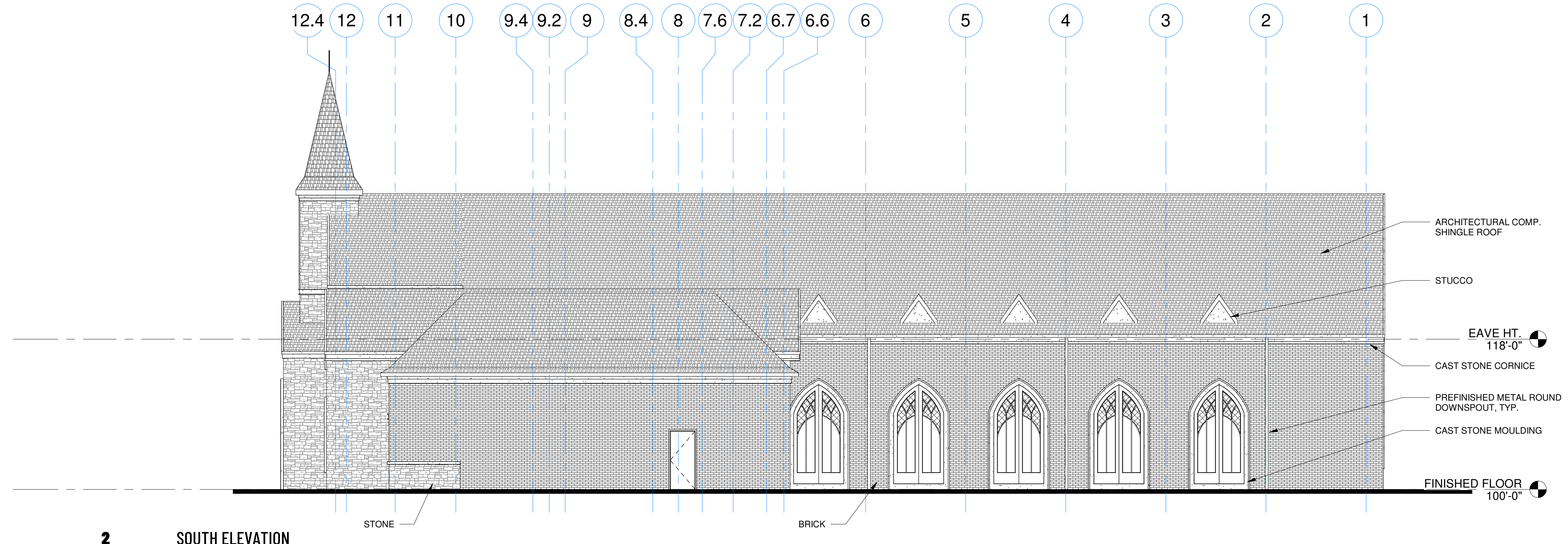
MILESTONE CHAPEL

201 MOUNT GILEAD ROAD
KELLER, TEXAS 76248

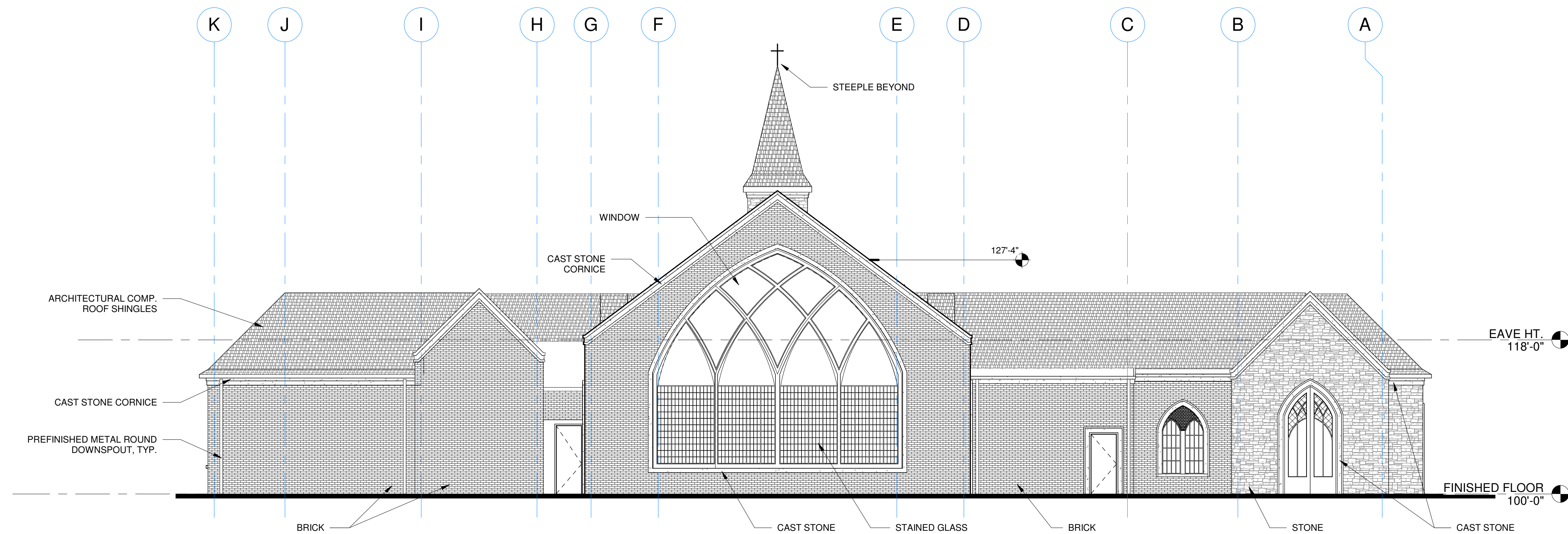
2023.008
OCTOBER 30, 2023

EXTERIOR ELEVATIONS

Revision Schedule		
Rev. #	Revision Description	Revision Date



2 SOUTH ELEVATION
A311 1/8" = 1'-0"



1 EAST ELEVATION
A311 1/8" = 1'-0"

NOT TO BE USED FOR PERMITTING
OR CONSTRUCTION

ANDREW OXLEY

THE ARCHITECT AND THE ARCHITECT'S CONSULTANTS SHALL BE SEENED THE AUTHOR AND OWNER OF THEIR RESPECTIVE INSTRUMENTS OF SERVICE, INCLUDING THE DRAWINGS AND SPECIFICATIONS, AND SHALL RETAIN ALL COMMON LAW, STATUTORY AND OTHER RESERVED RIGHTS, INCLUDING COPYRIGHTS. SUBMISSION OR DISTRIBUTION OF INSTRUMENTS OF SERVICE TO ANY OTHER PARTY WITHOUT THE ARCHITECT'S CONSENT IS PROHIBITED. THE ARCHITECT'S INSTRUMENTS OF SERVICE SHALL NOT BE CONSIDERED AS INSTRUMENTS OF SERVICE FOR ANY OTHER PROJECT. THE ARCHITECT'S INSTRUMENTS OF SERVICE SHALL NOT BE USED FOR ANY OTHER PROJECT WITHOUT THE ARCHITECT'S WRITTEN APPROVAL. THE ARCHITECT'S INSTRUMENTS OF SERVICE SHALL NOT BE USED FOR ANY OTHER PROJECT WITHOUT THE ARCHITECT'S WRITTEN APPROVAL. THE ARCHITECT'S INSTRUMENTS OF SERVICE SHALL NOT BE USED FOR ANY OTHER PROJECT WITHOUT THE ARCHITECT'S WRITTEN APPROVAL.

MILESTONE CHAPEL

201 MOUNT GILEAD ROAD
KELLER, TEXAS 76248

2023.008
OCTOBER 30, 2023

EXTERIOR ELEVATIONS