



Sign Permit Request

For Illuminated Channel Letters Cabinet
West Elevation

On Behalf Of

Creekside Pet Care Center - Suveto

8830 Davis Blvd
Keller, TX 76248

Requested By

Signarama Grapevine
151 S. Dooley St., Ste 101
Grapevine, TX 76051
817-421-0805
James Nevonen

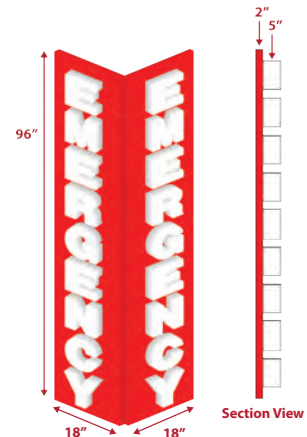
Summary

Creekside Pet Care Center is a 24/7 emergency pet care facility servicing Keller. To better serve its growing clientele, Creekside requests approval for two illuminated channel letter cabinet signs to be positioned on two prominent corners of the building's West elevation.

These signs will ensure high visibility and readability, particularly in urgent situations and low-light conditions. Their strategic placement will provide clear direction for pet owners in need of immediate assistance, improving the facility's ability to respond quickly and efficiently during emergencies.

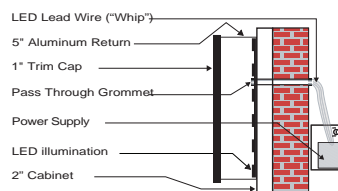
Proposed Signage

SUVETO - CREEKSIDE 8830 DAVIS BLVD KELLER, TX 76248



WEST ELEVATION

Sign Type: Channel Letters on Corner Cabinet



Grapevine Signarama
 The way to grow your business.

151 S. DOOLEY ST. #101/GRAPEVINE, TX 76051
 FOR MORE INFORMATION: 817-421-0805

Customer: Suveto - Creekside
 Contact: Sarah Hartman
 Address: 8830 Davis Blvd
 Keller, TX 76248
 Phone: (515) 321-0871

SIZE (W x H): 18"x96" QUANTITY: 2
 SIDES: Single SIGN TYPE: Channel Letters on Corner Cabinet
 Business Frontage: 140'
 Total Frontage: 140'
 Height of Building: 50'
 Height to bottom of sign: 16'
 Elevation: East

Location



Installed by Licensed Electrical Contractor:

JSM Signs (TESCL # 19116)

Phone: 214-924-9363

Grapevine
Signarama[®]
The way to grow your business.

To the City of Keller,

On behalf of Creekside Pet Care Center, Signarama Grapevine respectfully requests approval for two signs to be placed on the west elevation of their facility. Suveto Creekside is a full-service veterinary hospital with 10 skilled veterinarians dedicated to providing high-quality care for pets.

The Creekside facility has been serving Keller since 1999 and has earned a strong reputation as a trusted, dependable pet care provider. Their commitment to pet safety and quality care has led to an increased demand for emergency services. To better serve their clients, it is essential that clear signage be installed to designate the emergency area to direct pet owners in urgent circumstances.

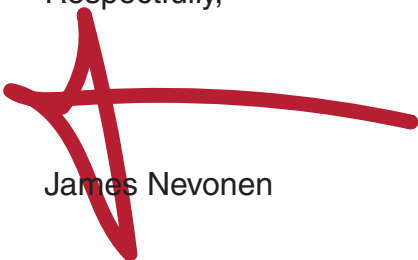
Creekside Pet Care Center offers a comprehensive range of services, including 24/7 emergency care, wellness exams, surgeries, dental care, and parasite prevention. Their AAHA accreditation ensures they meet rigorous standards of care, providing peace of mind to pet owners. As a trusted part of the Keller community, they are dedicated to ensuring pets receive the highest quality of care at all times, day or night. The proposed signage will further support this mission by improving public safety, making the facility more visible, and helping pet owners quickly find the emergency area when needed.

The proposed signs will be internally illuminated channel letters on a cabinet, ensuring clear readability both during day and night hours. Given the nature of the business, high visibility is essential for directing pet owners in emergency situations, especially during low-light hours. The signage will improve safety by ensuring the facility is easily identifiable to pet owners in urgent circumstances.

The signage will be designed and installed in full compliance with all City of Keller guidelines and regulations to ensure that it meets aesthetic, safety, and zoning standards. We understand the importance of maintaining the integrity of Keller's visual environment and are committed to ensuring that the signage enhances the facility's ability to serve the community while remaining within approved guidelines.

Thank you for your consideration and support of local businesses like Suveto Creekside.

Respectfully,



James Nevonon

Existing Store Fronts In Keller with similar signage relative to Creekside's requests:





KFC / Taco Bell - 2 signs per elevation



Oasis Dental - 2 signs on Western Elevation



Mexican Inn - 2 signs on Southern Elevation



Spring Creek BBQ - 3 signs on Southern Elevation



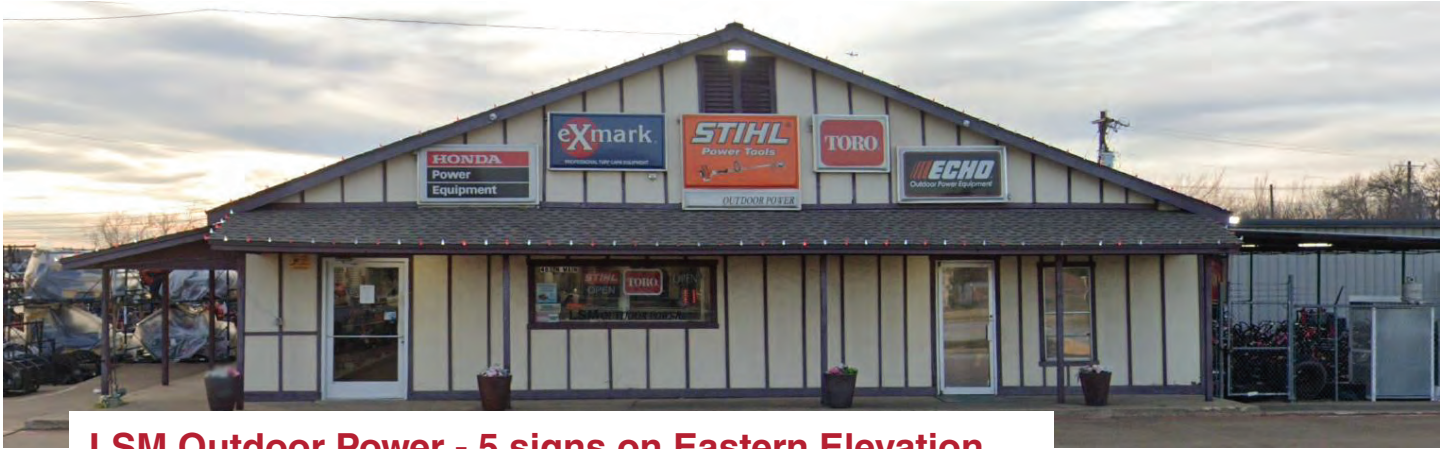
The Pour Shack - 3 signs on Eastern Elevation



Ann Gibson Agency - 2 signs on Eastern Elevation



Old Town Ice House - 2 signs on Eastern Elevation



LSM Outdoor Power - 5 signs on Eastern Elevation



Summer Moon - 2 signs on Western Elevation



**Majestic Nail Salon - 2 signs on Western Elevation
3 signs on Northern Elevation**