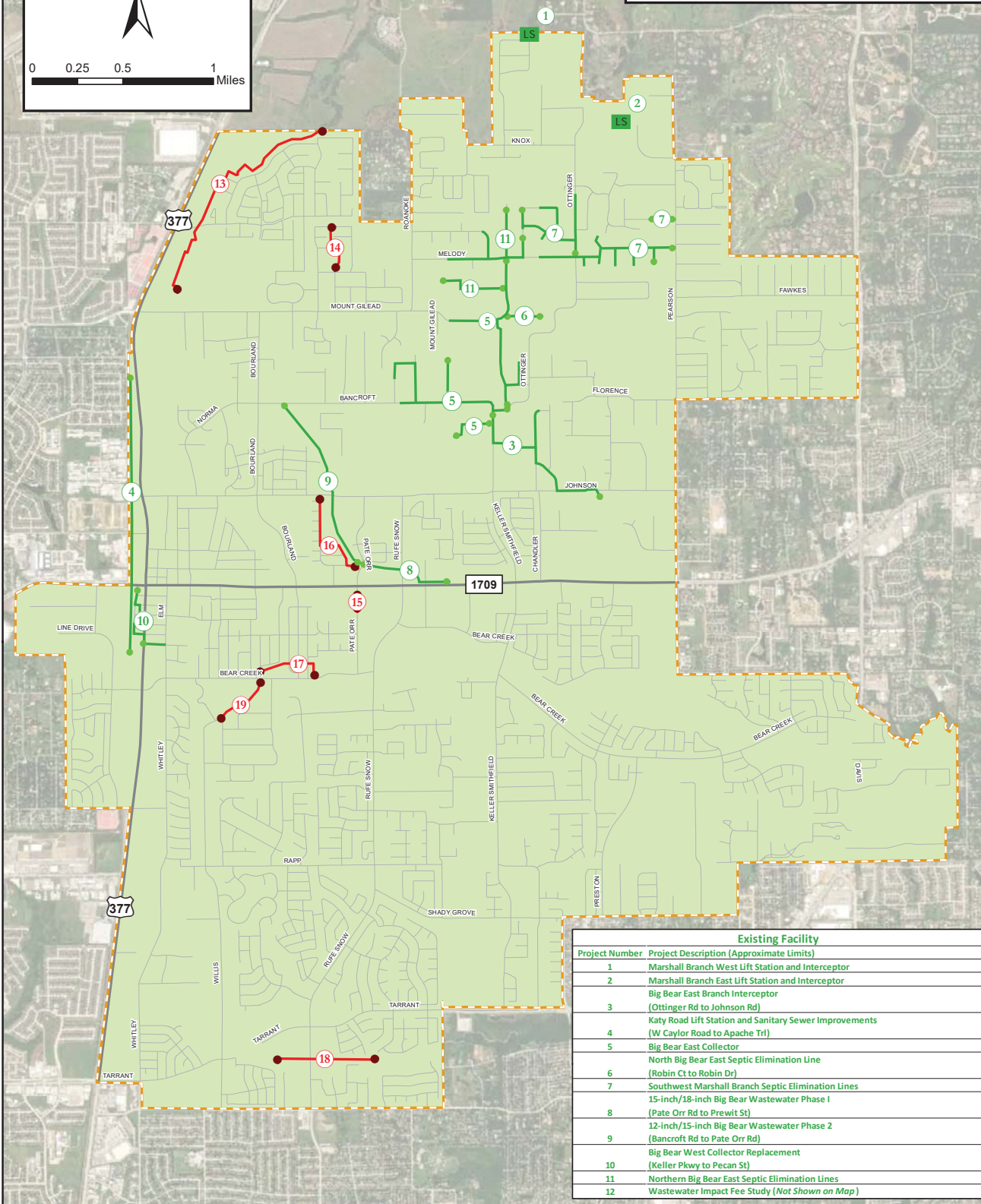




0 0.25 0.5 1 Miles

Exhibit 4.1
Wastewater Impact Fee CIP
 City of Keller, TX
 August 2022
 Kimley»Horn



Existing Facility	
Project Number	Project Description (Approximate Limits)
1	Marshall Branch West Lift Station and Interceptor
2	Marshall Branch East Lift Station and Interceptor
3	Big Bear East Branch Interceptor (Ottinger Rd to Johnson Rd)
4	Katy Road Lift Station and Sanitary Sewer Improvements (W Taylor Road to Apache Trl)
5	Big Bear East Collector
6	North Big Bear East Septic Elimination Line (Robin Ct to Robin Dr)
7	Southwest Marshall Branch Septic Elimination Lines
8	15-inch/18-inch Big Bear Wastewater Phase 1 (Pate Orr Rd to Prewit St)
9	12-inch/15-inch Big Bear Wastewater Phase 2 (Bancroft Rd to Pate Orr Rd)
10	Big Bear West Collector Replacement (Keller Pkwy to Pecan St)
11	Northern Big Bear East Septic Elimination Lines
12	Wastewater Impact Fee Study (Not Shown on Map)

Existing Lift Station	Proposed 2021-2031 Lift Station
Existing Sewer Line	Proposed 2021-2031 Sewer Line
Existing Facility Project Label	Proposed Facility Project Label
City Limits	Wastewater Service

Proposed 2021-2031 Facilities		
Project Number	2021 Master Plan Project Number	Project Description (Approximate Limits)
13	2	Center Stage Development 12-inch Sewer Line (Regal Crossing to MT Gilead Rd)
14	3	North Shropshire Court 15-Inch Sewer Line (Northern Trace to Weybridge Ln)
15	4	Pate Orr Road 12-Inch Sewer Line (Keller Pkwy to Silver Lake Dr)
16	5	Bluebonnet Drive 8-Inch Sewer Line (Johnson Rd to Pate Orr Rd)
17	6	15-Inch Sewer Line (Apache Trl to Bear Creek Pkwy)
18	8	15-Inch Sewer Line (Tarrant Pkwy/Rufe Snow Dr to Highland Oaks Dr)
19	9	Shady Lane North 12-Inch Sewer Line (Bear Creek Pkwy to Roy Ln)

Source: Esri, Maxar, GeoEye, Earthstar Geographics, CNES/Airbus DS, USDA, USGS, AeroGRID, IGN, and the GIS User Community