

OTK PH II S. Elm St Reconstruction 30% Design

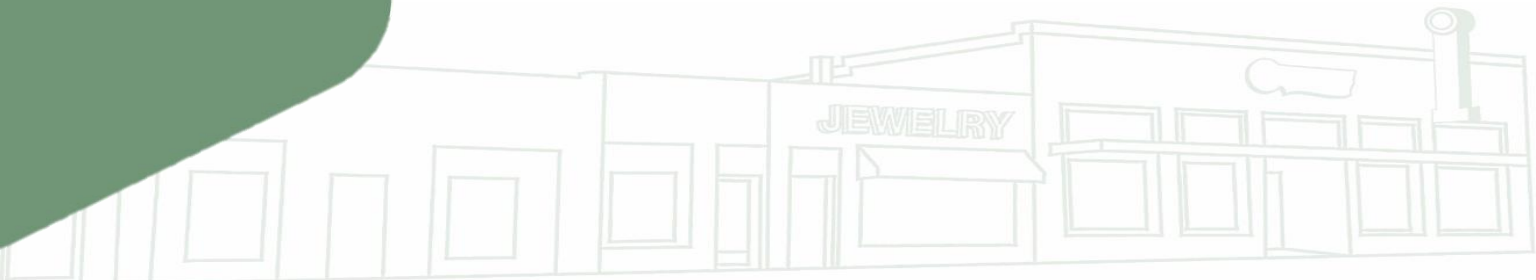
City Council Work Session

August 16, 2022



Agenda

- Project Status and Timeline
- S Elm Street Improvements
- Bridge Replacement and Enhancement Options
- Opinion of Construction Costs and Cost Savings
- Council Direction





Old Town Keller PH II Improvements

- Bear Creek Pkwy Roundabout
- US 377 Medians
- Bates Street
- S. Elm Street

OTK PH II Project Stages

**2018 PH II Planning
Process**

**Bear Creek Pkwy
Roundabout**

Bates Street

S Elm Street

Side Streets

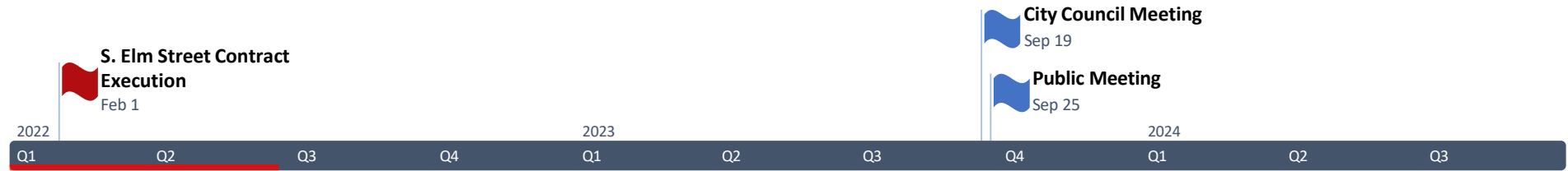
Pedestrian
Walkway

Parking Garage

Alley
Connections

**Proposed
Future
Projects**

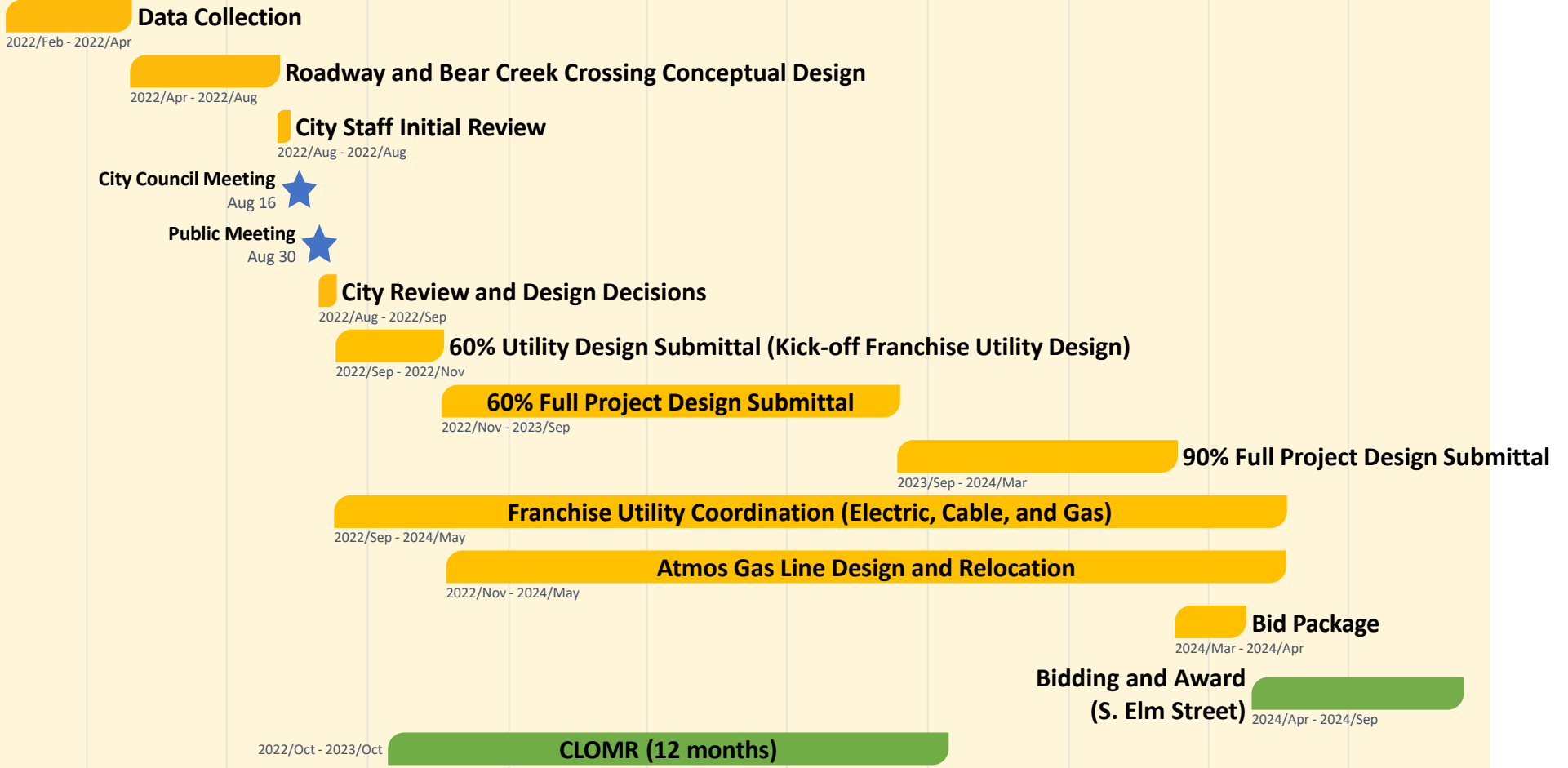
S. Elm Street Design Schedule



Utility and Temp Construction Easement Acquisition
2023/Sep - 2024/Sep

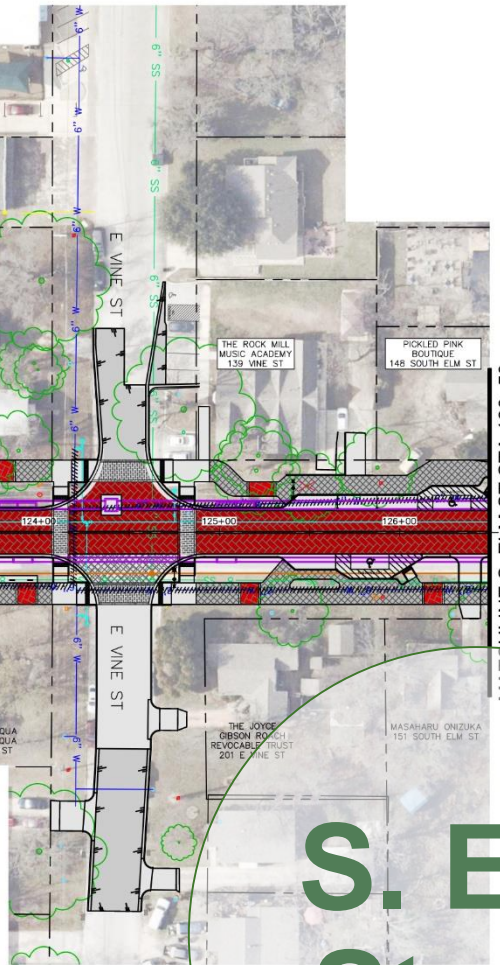
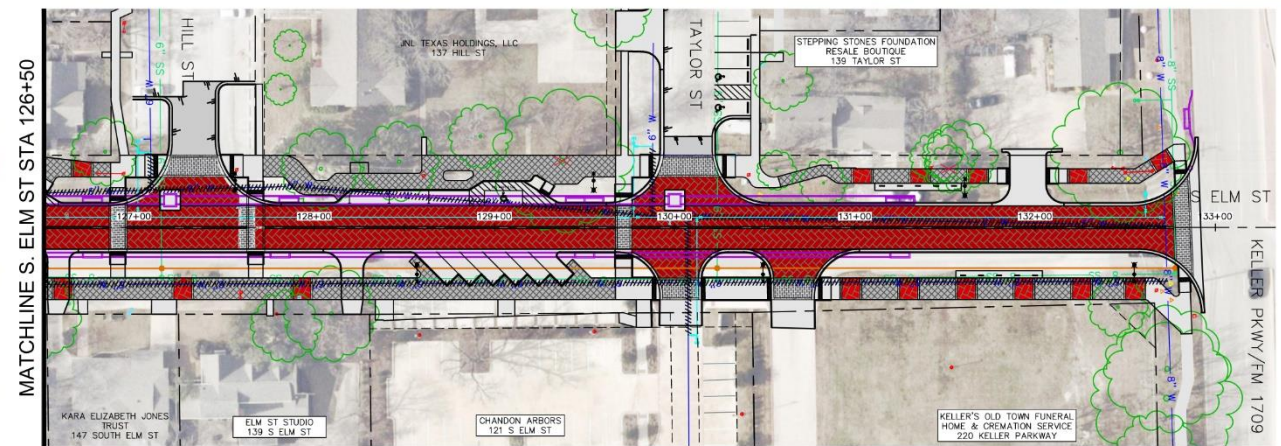
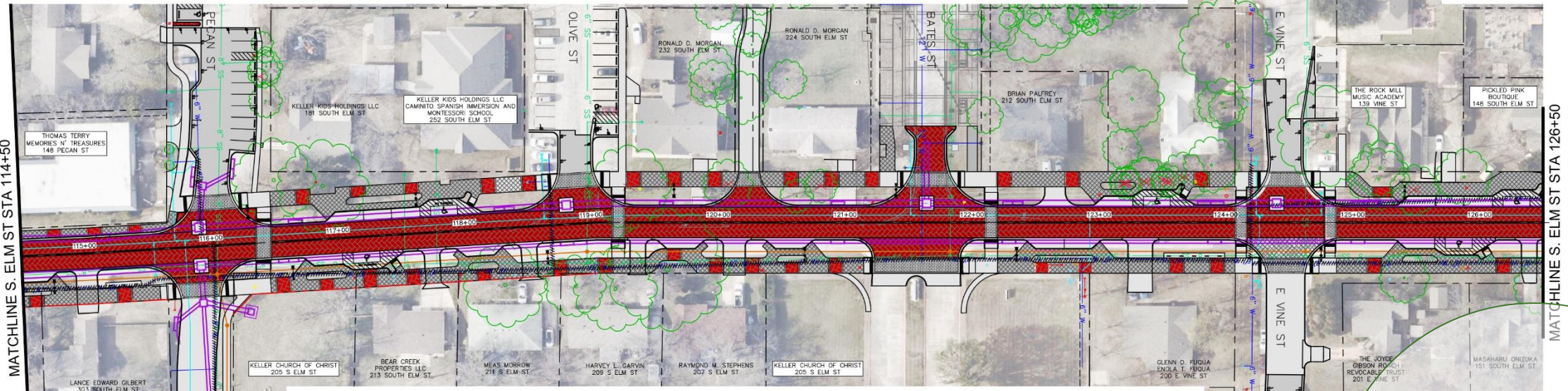
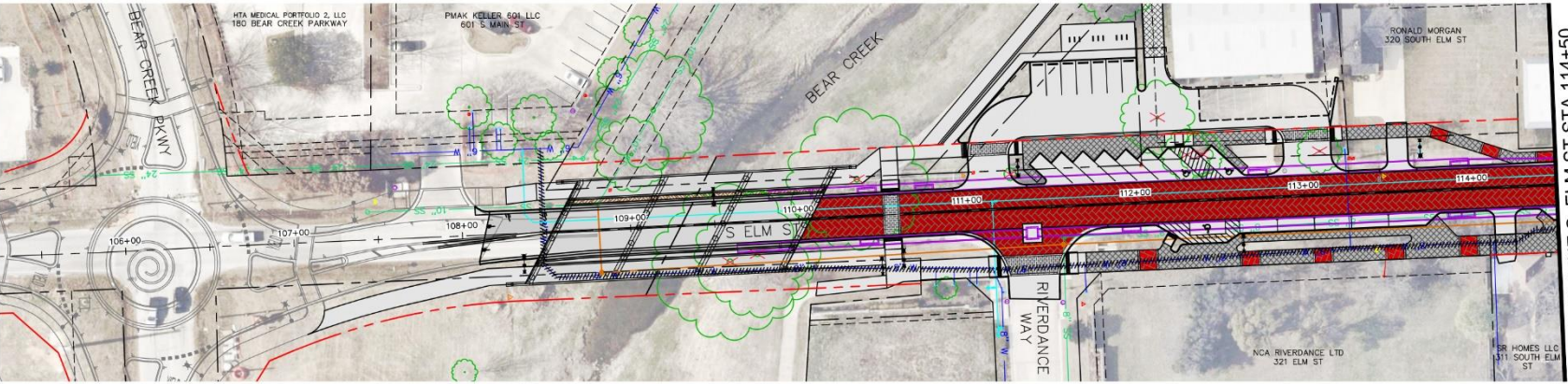
Alley ROW Acquisition
2022/Aug - 2023/Aug

S. Elm Street Design Schedule





Roadway Reconstruction

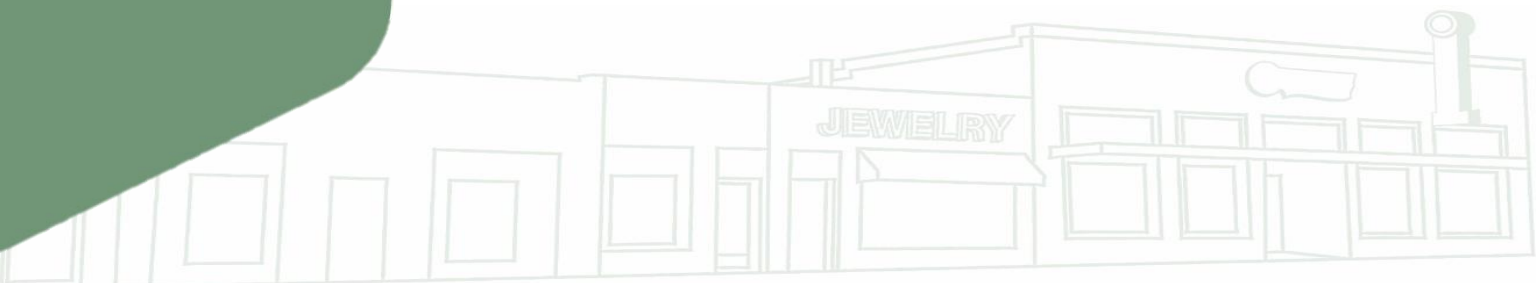


S. Elm Street

Slide 6

Roadway Improvements

- S Elm Street from Bear Creek Pkwy to FM 1709
 - On-Street Parking
 - Street Furniture: Benches and Trash Cans
 - Bicycle Parking
 - Landscaping
- Bear Creek Crossing Improvements (Bridge)
- Storm Drain, Water Line, and Sewer Line Improvements
- Franchise Utility Improvements

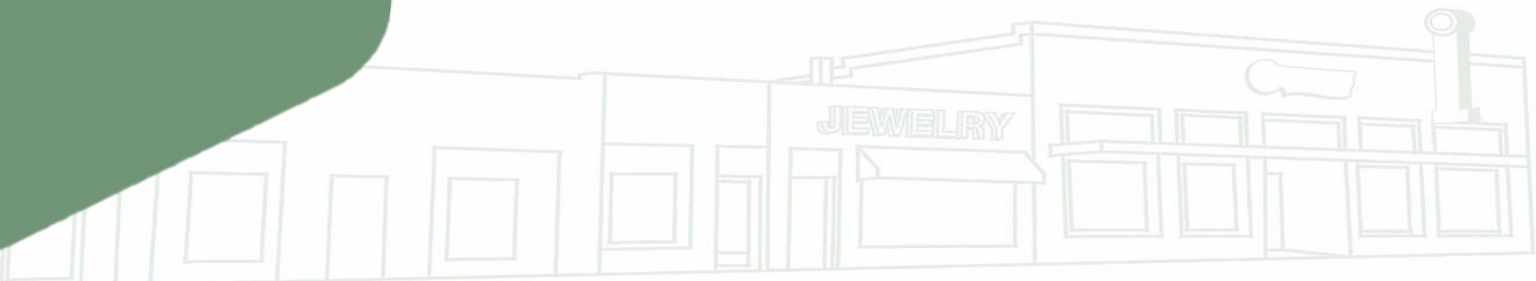




Bridge Replacement and Enhancement Options

Bridge Replacement

- Replace Existing Bridge
- Meets FEMA and City Requirements
- Accommodates a 100 Year Storm



Bridge Aesthetics



- Brick Façade with Black Wrought Iron Pedestrian Railing
- Raised Planter Beds Between Traffic and Pedestrians
- \$2M for Brick Façade, \$1.5M for Basic Bridge

Shade Enhancement



- Shade Over Sidewalk
- Placed Within Proposed Planter Bed
- Additional \$300,000

Truss Detail Enhancement



- Non-Structural
- Railroad Themed
- Additional \$600,000



Construction Costs

Opinion of Construction Cost Summary and Cost Saving Options

Tarrant County vs 30% Design Costs

	Construction Cost Subtotal	Construction Contingency	Construction Cost Total w/o Inflation	Inflation	Construction Costs
Tarrant County Bond Application	\$8,530,000	\$2,912,200 (30%)	\$11,442,200	\$1,257,600 6%/yr	\$13,699,800
S Elm Street 30% Submittal	\$13,930,000	\$3,782,500 (25%)	\$17,800,000	\$10,700,000 2%/mo	\$28,500,000
				\$2,700,000 6%/yr	\$20,500,000
				\$4,500,000 10%/yr	\$22,300,000
Franchise Utility Relocations	\$1,000,000	-	\$1,000,000	\$600,000	\$1,600,000

Tarrant County Bond vs 30% Submittal
 \$6,357,800 (Construction Cost Total w/o Inflation)



Major Item Increases

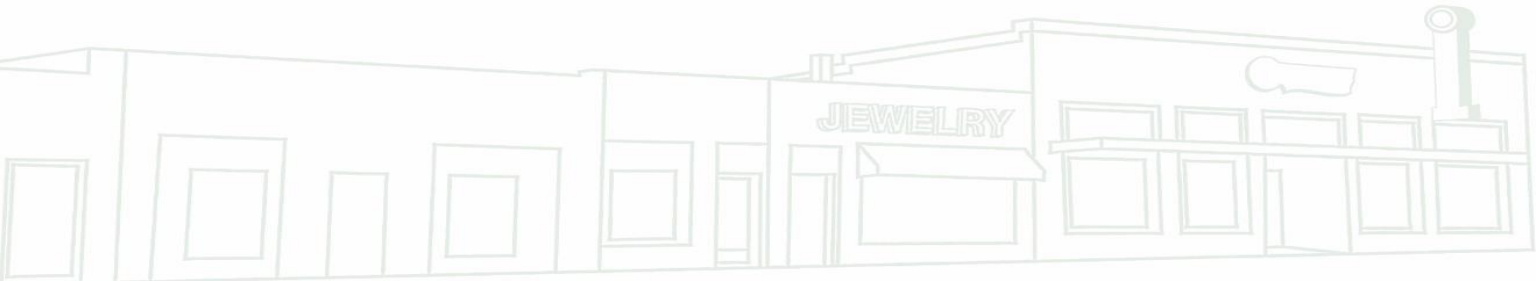
- Material Price Inflation: \$2,770,000
 - Roadway: \$1,030,000
 - Storm Drain: \$1,010,000
 - Water and Sewer: \$730,000
- Bridge Size Increase: \$1,200,000
- Custom Street Lights: \$833,000
- Miscellaneous Items (mobilization, site clearing, etc): \$600,000

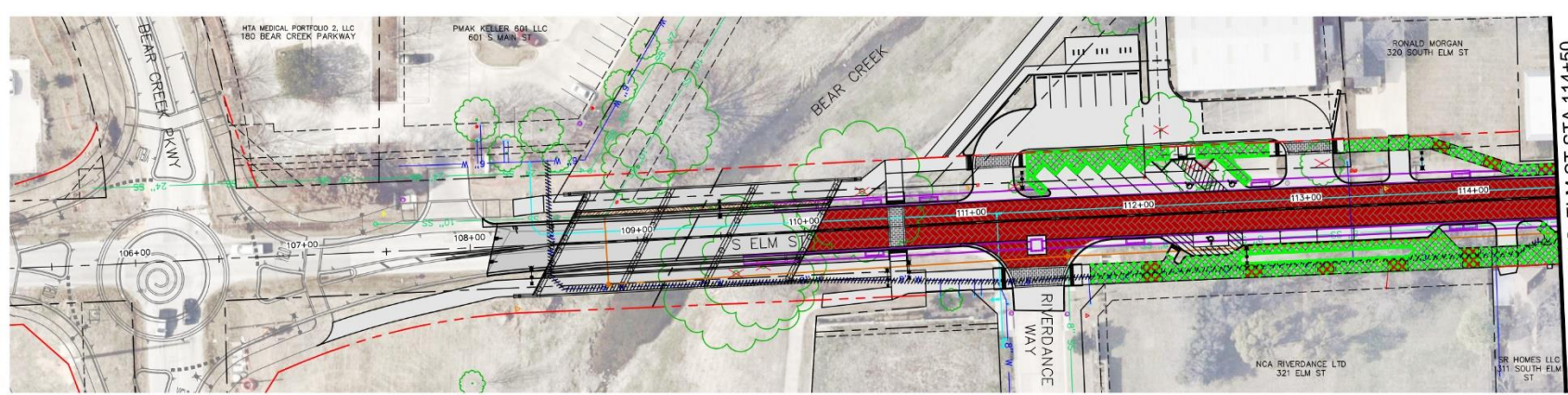
Total Major Item Increase:

~\$5,403,000

Total Project Costs

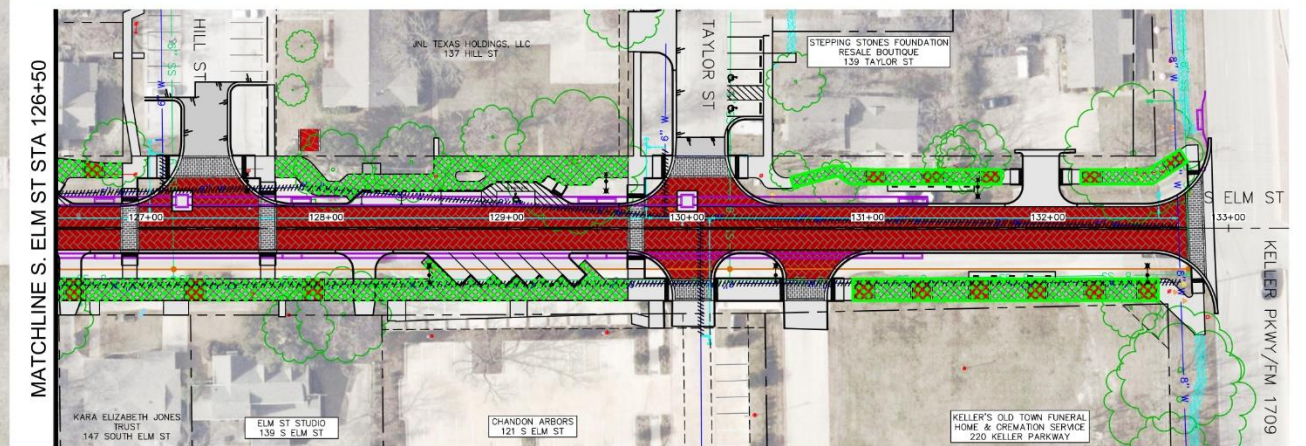
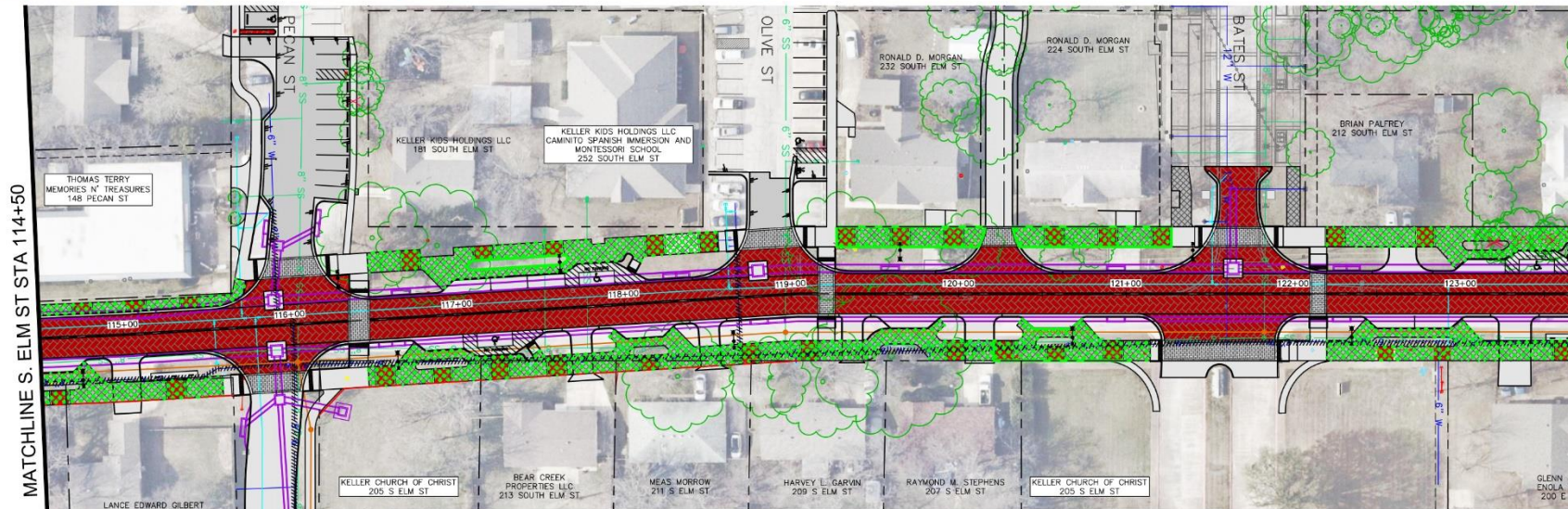
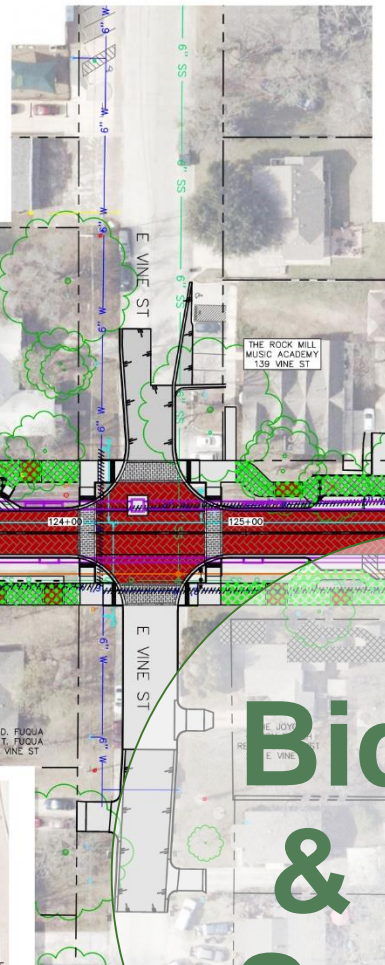
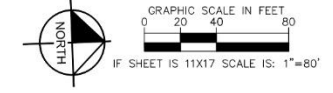
	Construction Cost Subtotal	Construction Contingency	Construction Cost Total w/o Inflation	Inflation 2%/month	Construction Costs
S. Elm Street Roadway	\$13,930,000	\$3,782,500 (25%)	\$17,800,000	\$10,700,000	\$28,500,000
Bridge Enhancements	\$900,000	-	\$900,000	\$540,000	\$1,440,000
Franchise Utility	\$1,000,000	-	\$1,000,000	\$600,000	\$1,600,000
PROJECT TOTAL	\$15,830,000	\$3,482,500	\$19,700,000	\$11,840,000	\$31,540,000



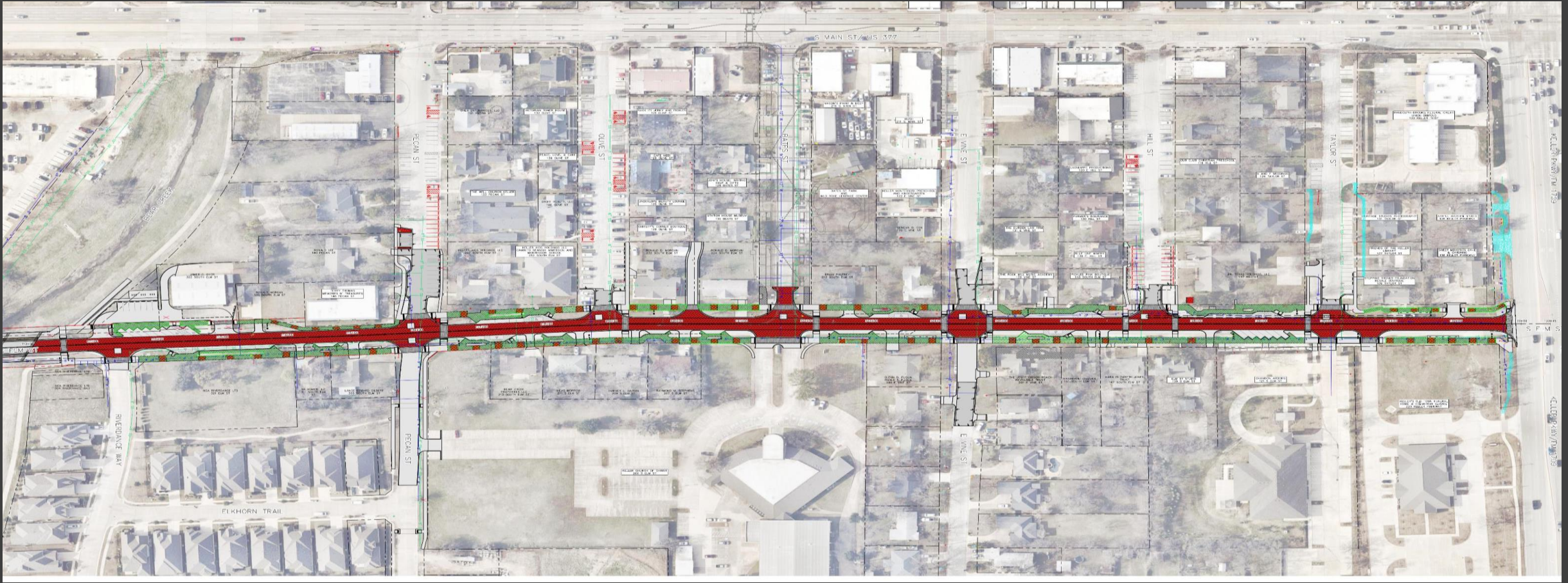


LEGEND

- BID ALTERNATE #1: SIDEWALK GAPS
- BID ALTERNATE #2: RESTRIPE HANDICAP STALLS
- COST SAVING: DECORATIVE SIDEWALK LIMITS



**Bid Alts
& Cost
Savings**



Bid Alts & Cost Savings

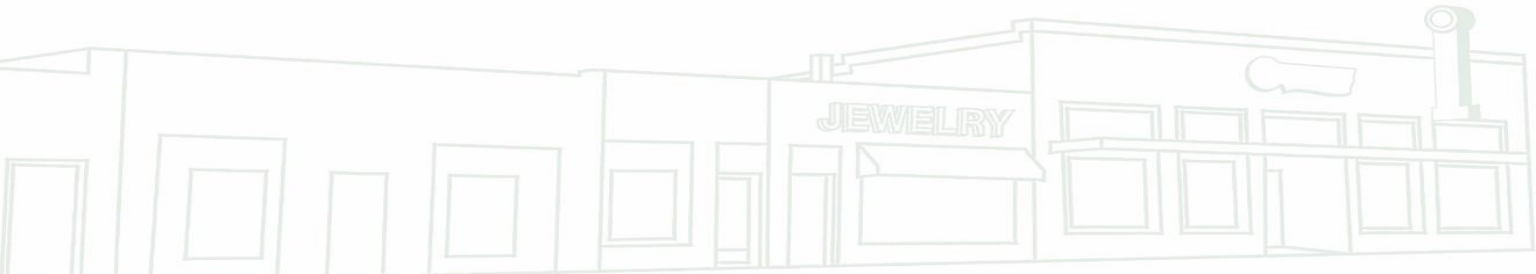
- Cyan (Bid Alt #1) = Sidewalk Gaps
- Red Parking Stalls (Bid Alt #2) = Restripe Handicap Stalls
- Green (Cost Saving) = No Decorative Sidewalk Pavement

Cost Saving Options (S. Elm Street Only)

	Construction Cost Subtotal	Construction Contingency	Construction Cost Total w/o Inflation	Comparison to TC Bond Application	Comparison to Original Cost
S Elm Street (As Shown)	\$13,930,000	\$3,782,500	\$17,800,000	+\$6,357,800	-
<u>Option 1</u> No Decorative Sidewalk Pavement (green hatch)	\$13,660,000	\$3,715,000	\$17,400,000	+\$5,957,800	-\$400,000
<u>Option 2</u> Option 1 + Basic Bridge & No Gateway Features on S. Elm	\$12,900,000	\$3,525,000	\$16,500,000	+\$5,057,800	-\$1,300,000
<u>Option 3</u> Option 2 + No Decorative Roadway Pavement	\$12,430,000	\$3,407,500	\$15,900,000	+\$4,457,800	-\$1,900,000
<u>Option 4 (Lowest Cost)</u> Option 3 + No Custom Light Poles	\$12,030,000	\$3,307,500	\$15,400,000	+\$3,957,800	-\$2,400,000

Total Project Costs (Lowest Cost Option)

	Construction Cost Subtotal	Construction Contingency	Construction Cost Total w/o Inflation	Inflation 2%/month	Construction Costs
S. Elm Street Roadway	\$12,030,000	\$3,307,500 (25%)	\$15,400,000	\$9,300,000	\$24,700,000
Bridge Alternatives	\$900,000	-	\$900,000	\$540,000	\$1,440,000
Franchise Utility	\$1,000,000	-	\$1,000,000	\$600,000	\$1,600,000
PROJECT TOTAL	\$16,563,000	\$3,720,000	\$17,300,000	\$10,440,000	\$27,740,000



Bid Alternates (To be Evaluated Closer to 60%)

- Bid Alt #1:
 - Sidewalk Gaps
- Bid Alt #2:
 - Re-Striping Existing Handicap Stalls
- Bid Alt #3:
 - Sound System, Electrical System, and Re-Seal Bates Street
- Bid Alt #4:
 - Flexible Base Subgrade
- Bid Alt #5:
 - Fog Seal and Re-Stripe Side Streets (Replaces Bid Alt #2)

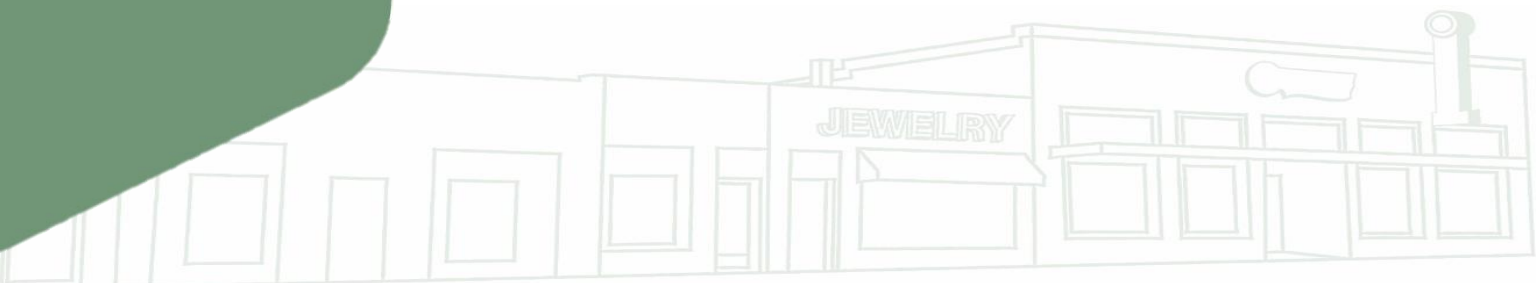




Council Direction

Council Direction

- Move forward with 30% Design or a Cost Saving Option?
 - Option 1: Remove Decorative Sidewalk
 - Option 2: Option 1 + Basic TxDOT Bridge and No Gateway Features on S. Elm St
 - Option 3: Option 2 + No Decorative Roadway Pavement
 - Option 4: Option 3 + No Custom Street Lights
- Move forward with one or both Bridge Enhancements?





Questions
