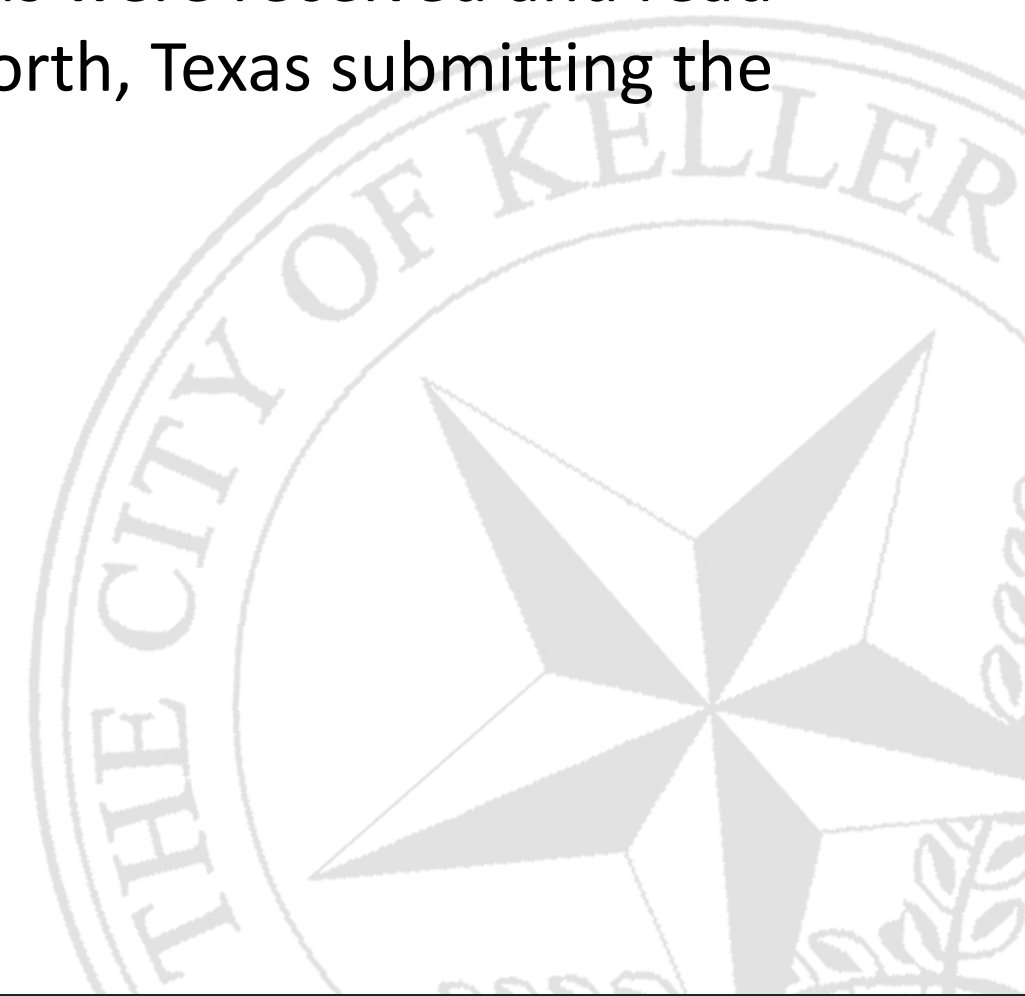
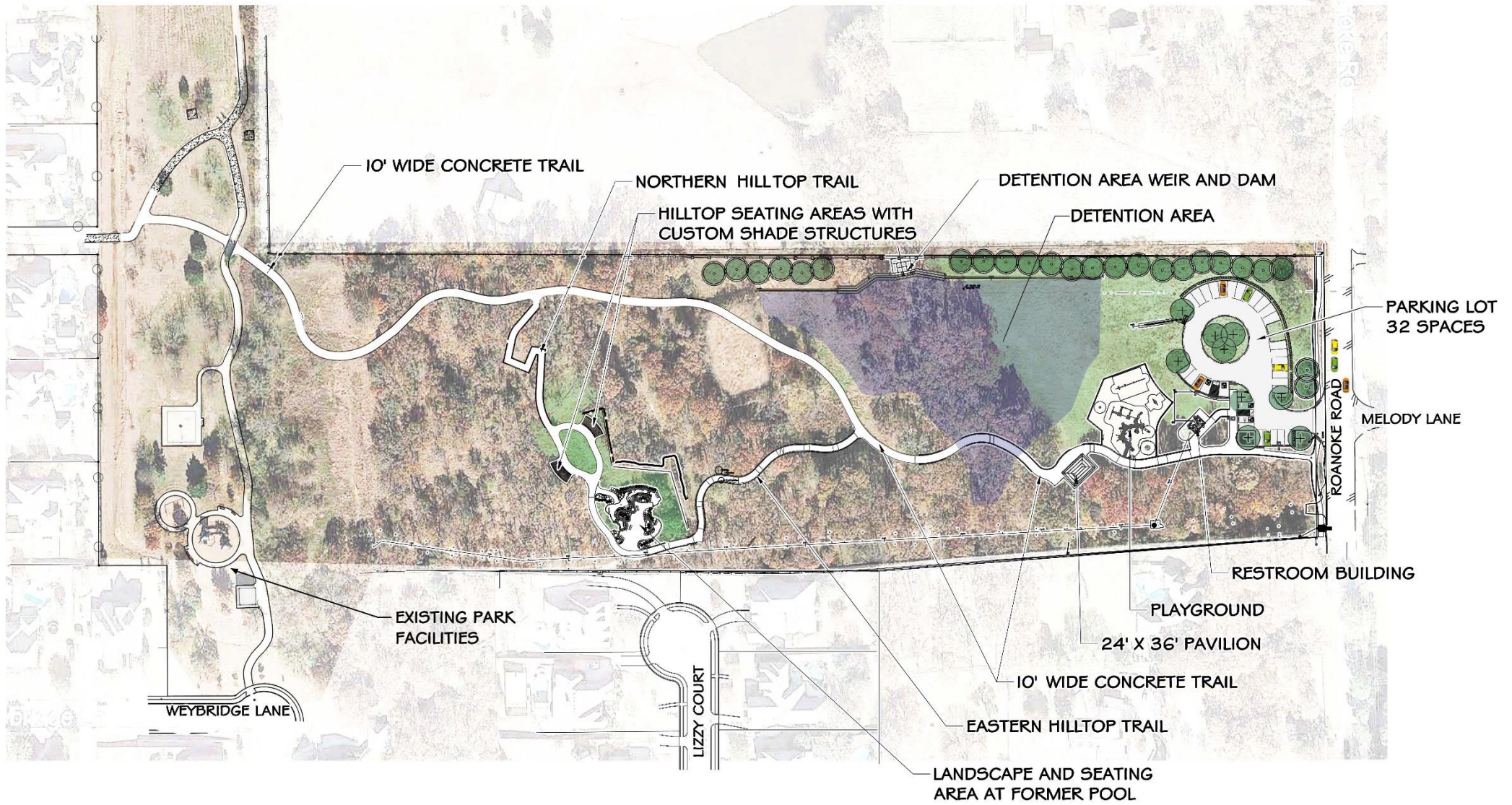


Item H-8

Consider a resolution approving the bid from C. Green Scaping LP, of Fort Worth, Texas, for general park improvements to Overton Ridge Park, for the Parks and Recreation Department; and authorizing the City Manager to execute all contract documents relating thereto on behalf of the City of Keller, Texas.

A request for sealed bids was advertised in accordance with State Law in May 2021. On June 10, 2021, six bids were received and read aloud, with C. Green Scaping LP, of Fort Worth, Texas submitting the lowest bid meeting specifications.





WIDE CONCRETE TRAIL

NORTHERN HILLTOP TRAIL

DETENTION AREA WEIR AND DAM

HILLTOP SEATING AREAS WITH CUSTOM SHADE STRUCTURES

DETENTION AREA

\$139,274

\$106,330

\$67,433

\$114,692

\$113,118

\$183,777

\$228,568

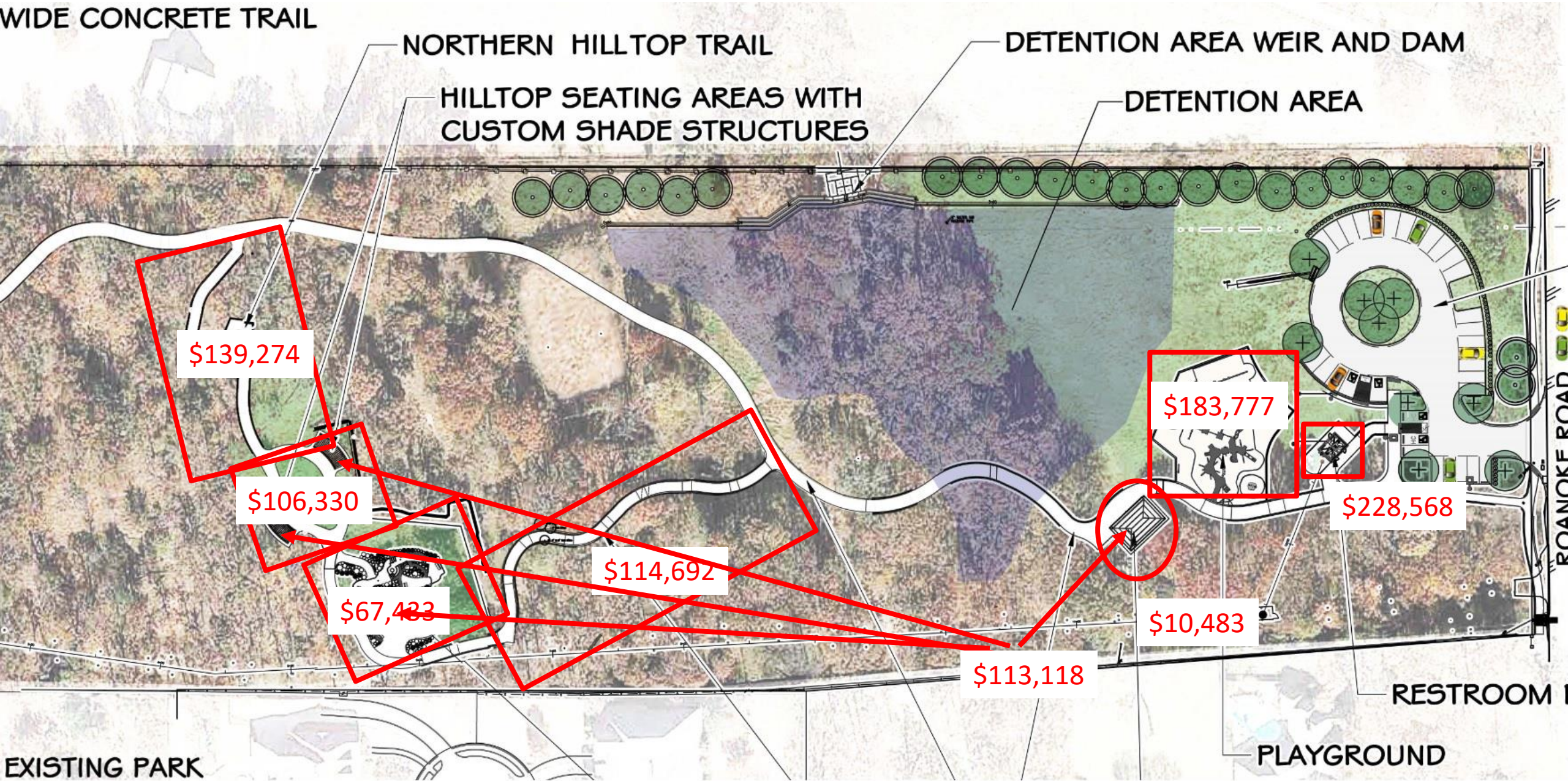
\$10,483

EXISTING PARK

PLAYGROUND

RESTROOM I

ROANOKE ROAD



Bidder	Base Bid	Alternate #1 Large Pavilion	Alternate #2 Eastern Trail Connection	Alternate #3 Pool Area	Alternate #4 Northern Trail Connection	Alternate #5 Hilltop Seating Area	Total Bid
C. Green Scaping	\$2,003,006	\$10,483	\$114,692	\$67,433	\$139,274	\$106,330	\$2,441,218
Cole Construction	\$2,224,081	\$18,600	\$199,637	\$61,443	\$209,691	\$69,908	\$2,783,360
The Fain Group	\$2,370,807	\$20,400	\$172,719	\$46,386	\$133,439	\$90,616	\$2,834,367
NorthRock Construction	\$2,629,079	\$9,790	\$136,877	\$49,537	\$142,474	\$86,306	\$3,054,063
2L Construction	\$2,777,095	\$24,000	\$177,460	\$54,824	\$152,341	\$60,858	\$3,246,578
FWCC	\$2,830,013	\$11,970	\$217,620	\$88,631	\$326,550	\$95,309	\$3,570,093

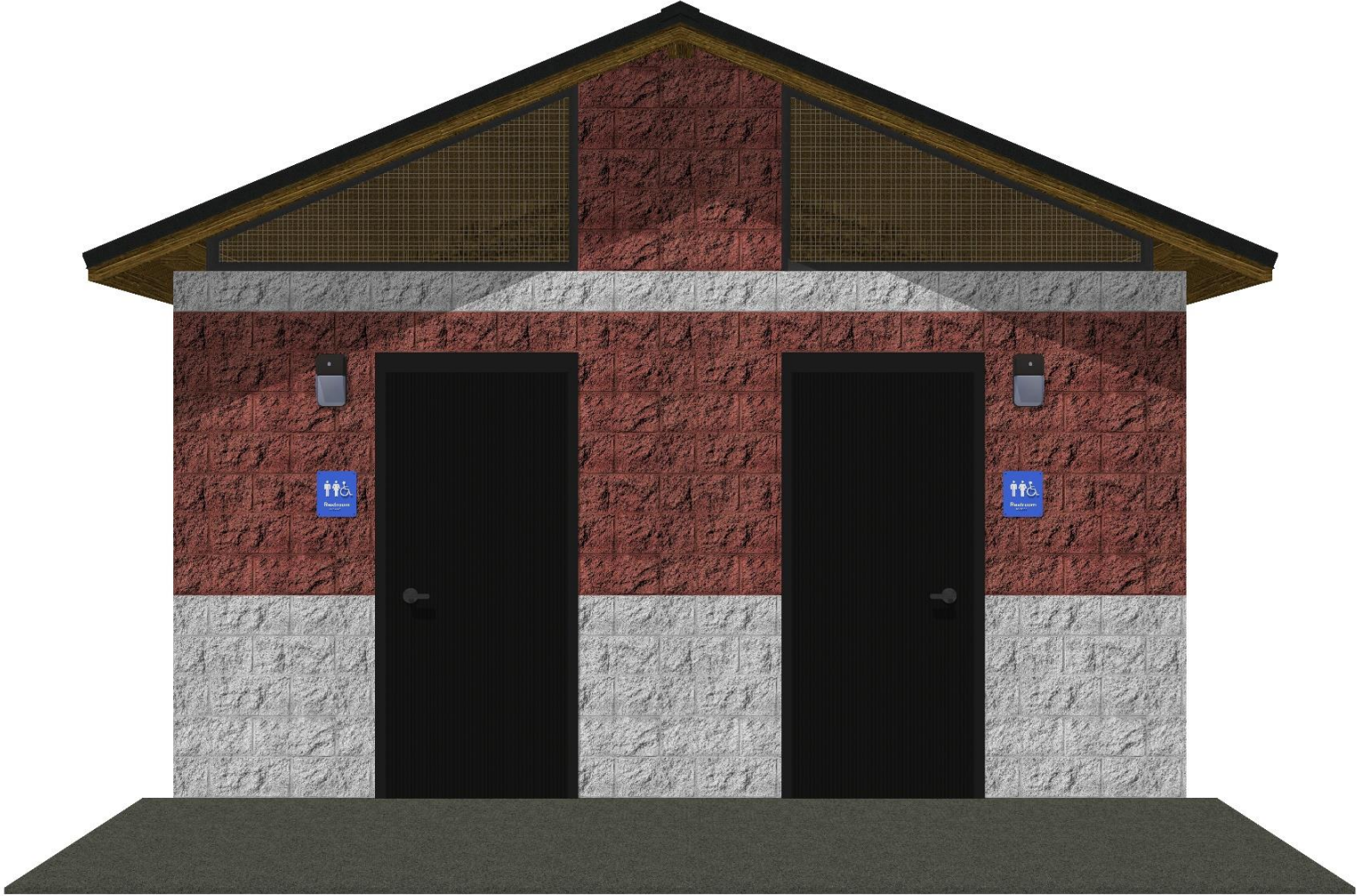
Excellence • Integrity • Service • Creativity • Communication

Item H-9: Restroom

Consider a resolution approving the bid from Romtec, Inc., of Roseburg, Oregon, for the construction of a restroom building for Overton Ridge Park, through the Texas Association of School Boards (TASB) BuyBoard Cooperative Purchasing Program, for the Parks and Recreation Department, and authorizing the City Manager to execute all purchase documents relating thereto on behalf of the City of Keller.

Item H-9: Restroom

WALL TYPE & UPRILL E



\$228,568

Item H-10: Playground

Consider a resolution approving the purchase and installation of a playground structure for Overton Ridge Park, from The Playground, Shade and Surfacing Depot, LLC., of Keller, Texas, through the Texas Association of School Boards (TASB) BuyBoard Cooperative Purchasing Program, for the Parks and Recreation Department; and authorizing the City Manager to execute all purchase documents relating thereto on behalf of the City of Keller, Texas.

Item H-10: Playground

OVERTON RIDGE



\$183,777

Model No. B503270R2

Posts | Burgundy Shade Roofs - Forest Green & Lime
 Accents | Tan Starglide Slide - Green & Lime
 Roto-Molded Plastic | Green
 HDPE Plastic | Lime-Black-Lime

Components

Quantity	Desc	1	2	3	4	5	6	7	8	9	10	11	12	13	14	15	16	17	18	19	20	21	22	23	24	25	26	27	28	29	30	31	32	33	34	35	36	37	38	39	40	41	42	43	44	45	46	47	48	49	50	51	52	53	54	55	56	57	58	59	60	61	62	63	64	65	66	67	68	69	70	71	72	73	74	75	76	77	78	79	80	81	82	83	84	85	86	87	88	89	90	91	92	93	94	95	96	97	98	99	100																																																																																																												
1	Sign Language Panel	1	Post to Post Floating Poles	1	Double Trapeze Challenge	1	Open Rail	2	"Accessible-Step Deck 24" Bay	1	8" Single Post Swing Extend-A-Bay	2	"Accessible-Step Deck 24" Bay	1	12" Square Quad Sail Modular (QM121205)	1	Transfer Station 2"	1	Chiff Edge	1	Accessible 8" Single Post Swing Extend-A-Bay	1	"Makinoor Single Post Swing (5'") 1-Bay"	1	Barrel Spinner	1	Pre-standing Sensory Panel	1	8" Single Post Swing 1-Bay	1	11' Single Post Swing 1-Bay	1	12' Single Post Swing 1-Bay	1	13' Single Post Swing 1-Bay	1	14' Single Post Swing 1-Bay	1	15' Single Post Swing 1-Bay	1	16' Single Post Swing 1-Bay	1	17' Single Post Swing 1-Bay	1	18' Single Post Swing 1-Bay	1	19' Single Post Swing 1-Bay	1	20' Single Post Swing 1-Bay	1	21' Single Post Swing 1-Bay	1	22' Single Post Swing 1-Bay	1	23' Single Post Swing 1-Bay	1	24' Single Post Swing 1-Bay	1	25' Single Post Swing 1-Bay	1	26' Single Post Swing 1-Bay	1	27' Single Post Swing 1-Bay	1	28' Single Post Swing 1-Bay	1	29' Single Post Swing 1-Bay	1	30' Single Post Swing 1-Bay	1	31' Single Post Swing 1-Bay	1	32' Single Post Swing 1-Bay	1	33' Single Post Swing 1-Bay	1	34' Single Post Swing 1-Bay	1	35' Single Post Swing 1-Bay	1	36' Single Post Swing 1-Bay	1	37' Single Post Swing 1-Bay	1	38' Single Post Swing 1-Bay	1	39' Single Post Swing 1-Bay	1	40' Single Post Swing 1-Bay	1	41' Single Post Swing 1-Bay	1	42' Single Post Swing 1-Bay	1	43' Single Post Swing 1-Bay	1	44' Single Post Swing 1-Bay	1	45' Single Post Swing 1-Bay	1	46' Single Post Swing 1-Bay	1	47' Single Post Swing 1-Bay	1	48' Single Post Swing 1-Bay	1	49' Single Post Swing 1-Bay	1	50' Single Post Swing 1-Bay	1	51' Single Post Swing 1-Bay	1	52' Single Post Swing 1-Bay	1	53' Single Post Swing 1-Bay	1	54' Single Post Swing 1-Bay	1	55' Single Post Swing 1-Bay	1	56' Single Post Swing 1-Bay	1	57' Single Post Swing 1-Bay	1	58' Single Post Swing 1-Bay	1	59' Single Post Swing 1-Bay	1	60' Single Post Swing 1-Bay	1	61' Single Post Swing 1-Bay	1	62' Single Post Swing 1-Bay	1	63' Single Post Swing 1-Bay	1	64' Single Post Swing 1-Bay	1	65' Single Post Swing 1-Bay	1	66' Single Post Swing 1-Bay	1	67' Single Post Swing 1-Bay	1	68' Single Post Swing 1-Bay	1	69' Single Post Swing 1-Bay	1	70' Single Post Swing 1-Bay	1	71' Single Post Swing 1-Bay	1	72' Single Post Swing 1-Bay	1	73' Single Post Swing 1-Bay	1	74' Single Post Swing 1-Bay	1	75' Single Post Swing 1-Bay	1	76' Single Post Swing 1-Bay	1	77' Single Post Swing 1-Bay	1	78' Single Post Swing 1-Bay	1	79' Single Post Swing 1-Bay	1	80' Single Post Swing 1-Bay	1	81' Single Post Swing 1-Bay	1	82' Single Post Swing 1-Bay	1	83' Single Post Swing 1-Bay	1	84' Single Post Swing 1-Bay	1	85' Single Post Swing 1-Bay	1	86' Single Post Swing 1-Bay	1	87' Single Post Swing 1-Bay	1	88' Single Post Swing 1-Bay	1	89' Single Post Swing 1-Bay	1	90' Single Post Swing 1-Bay	1	91' Single Post Swing 1-Bay	1	92' Single Post Swing 1-Bay	1	93' Single Post Swing 1-Bay	1	94' Single Post Swing 1-Bay	1	95' Single Post Swing 1-Bay	1	96' Single Post Swing 1-Bay	1	97' Single Post Swing 1-Bay	1	98' Single Post Swing 1-Bay	1	99' Single Post Swing 1-Bay	1	100' Single Post Swing 1-Bay

Henderson®
 Providing Playground Fun



For illustration purposes only. COLORS TBD. Copyright Protected. Not to be shared without written permission. Concrete border & ramp provided by Customer.

Item H-10: Playground



OVERTON RIDGE



Model No. B503270R2

Posts | Burgundy Shade Roofs - Forest Green & Lime
 Accents | Tan Starglide Slide - Green & Lime
 Roto-Molded Plastic | Green
 HDPE Plastic | Lime-Black-Lime

Components

Quantity	Desc	1	2	3	4	5	6	7	8
1	8'x12' Language Panel	1	1	1	1	1	1	1	1
1	JCM® Panel	1	1	1	1	1	1	1	1
1	Play/Foot Ball Panel w/ Severe	1	1	1	1	1	1	1	1
1	Wheel	1	1	1	1	1	1	1	1
1	Monkey Race Panel	1	1	1	1	1	1	1	1
1	Trompe L'oeil	1	1	1	1	1	1	1	1
1	Garden Fairy House	1	1	1	1	1	1	1	1
1	Finger Maze Panel	1	1	1	1	1	1	1	1
1	Play/Foot Ball Panel	1	1	1	1	1	1	1	1
1	Play/Foot Wisdom Panel	1	1	1	1	1	1	1	1
1	Ball & Tackle Shop Panel	1	1	1	1	1	1	1	1
1	Post to Post Climbing Pods	1	1	1	1	1	1	1	1
1	Wheelchair Ramp With Guard-rails	1	1	1	1	1	1	1	1
1	5'x4' Bend Bridge	1	1	1	1	1	1	1	1
1	6' Ramp With Barrier Rails	1	1	1	1	1	1	1	1
1	Ramp Wall 6'	1	1	1	1	1	1	1	1
1	Slide 7x4'	1	1	1	1	1	1	1	1
1	Ring Climber 4'	1	1	1	1	1	1	1	1
1	Roller Climber 7'	1	1	1	1	1	1	1	1
1	Chair Climber	1	1	1	1	1	1	1	1
1	Hemisphere Climber	1	1	1	1	1	1	1	1
1	Double Trapeze Challenge	1	1	1	1	1	1	1	1
1	Loop-to-Loop	1	1	1	1	1	1	1	1
1	8'3" Climbing Bar	1	1	1	1	1	1	1	1
1	Track Rails	1	1	1	1	1	1	1	1
1	Zipper	1	1	1	1	1	1	1	1
1	Accessible Trapeze Beam	1	1	1	1	1	1	1	1
1	Paddle Pommel	1	1	1	1	1	1	1	1
1	Crunch Bar	1	1	1	1	1	1	1	1
2	Play's Pathway (set of 2)	1	1	1	1	1	1	1	1
1	Wheelchair Barrier	1	1	1	1	1	1	1	1
1	Threshold	1	1	1	1	1	1	1	1
2	Open Ball	1	1	1	1	1	1	1	1
1	12' Square Quad Sail Modular	1	1	1	1	1	1	1	1
1	2041212345	1	1	1	1	1	1	1	1
1	Chill Edge	1	1	1	1	1	1	1	1
1	16' 1/2" Hex Modular Skids (HM161603)	1	1	1	1	1	1	1	1
1	Zipper	1	1	1	1	1	1	1	1
1	Accessible Trapeze Beam	1	1	1	1	1	1	1	1
1	Single Slide Plastic Head	1	1	1	1	1	1	1	1
1	Spiral Slide 6'	1	1	1	1	1	1	1	1
1	Wave Slide 6'	1	1	1	1	1	1	1	1
1	Single Slide 2'	1	1	1	1	1	1	1	1
1	Starglide Slide Slide Left 7'	1	1	1	1	1	1	1	1
2	"Accessible Step Deck 24" Dia	1	1	1	1	1	1	1	1
1	Transfer Station 2"	1	1	1	1	1	1	1	1
1	Lowebb's Ball Day	1	1	1	1	1	1	1	1
1	Low Support (Small)	1	1	1	1	1	1	1	1
12	12" Swing Seating"	1	1	1	1	1	1	1	1
2	Slush Proof Baby Seat	1	1	1	1	1	1	1	1
2	Slush Proof High Seat	1	1	1	1	1	1	1	1
1	Inclusive Swing Seat	1	1	1	1	1	1	1	1
1	Flourence Swing Seat	1	1	1	1	1	1	1	1
1	8' Single Post Swing 1.8kg	1	1	1	1	1	1	1	1
1	8' Single Post Swing Extend-A-Dia	1	1	1	1	1	1	1	1
2	Accessible 8' Single Post Swing	1	1	1	1	1	1	1	1
1	"Multilinear Single Post Swing (5") 1.8kg"	1	1	1	1	1	1	1	1
1	Barrel Spinner	1	1	1	1	1	1	1	1
1	Weathering Sensory Panel	1	1	1	1	1	1	1	1

Henderson®
 Providing Playground Fun



For illustration purposes only. COLORS TBD. Copyright Protected. Not to be shared without written permission. Concrete border & ramp provided by Customer.

Item H-11: Additional Amenities

Consider a resolution approving the purchase and installation of three pavilions, and a bench shade structure for Overton Ridge Park, from Site Source Inc., of Flower Mound, Texas, through the Texas Association of School Boards (TASB) BuyBoard Cooperative Purchasing Program, for the Parks and Recreation Department; and authorizing the City Manager to execute all purchase documents relating thereto on behalf of the City of Keller, Texas.

Item H-11: Large Pavilion



\$45,115

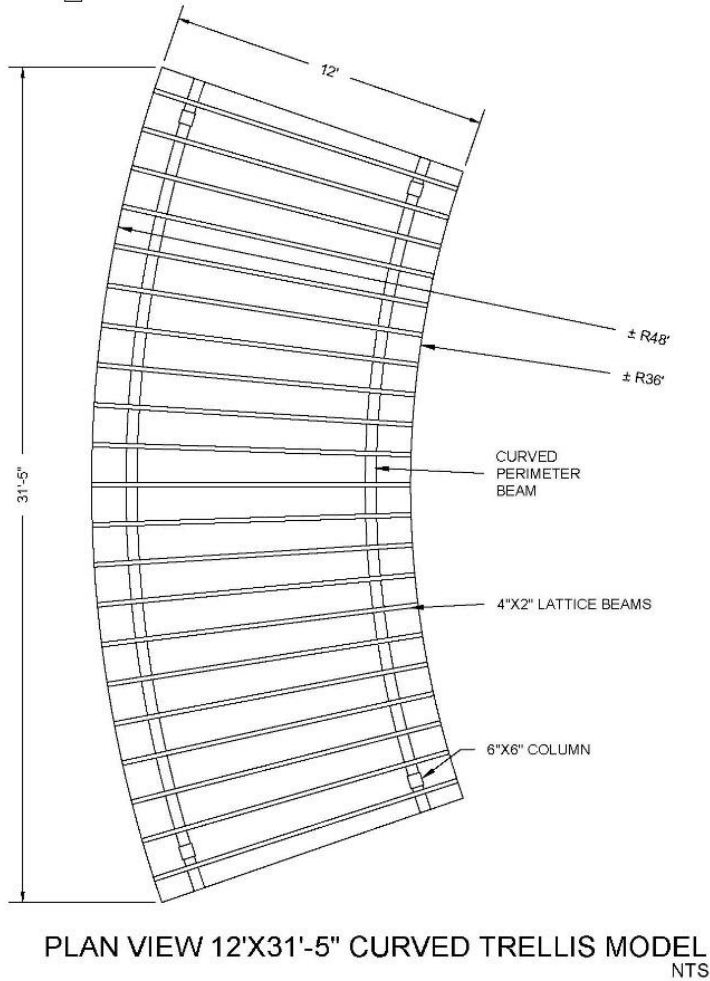
Item H-11: Bench Shade



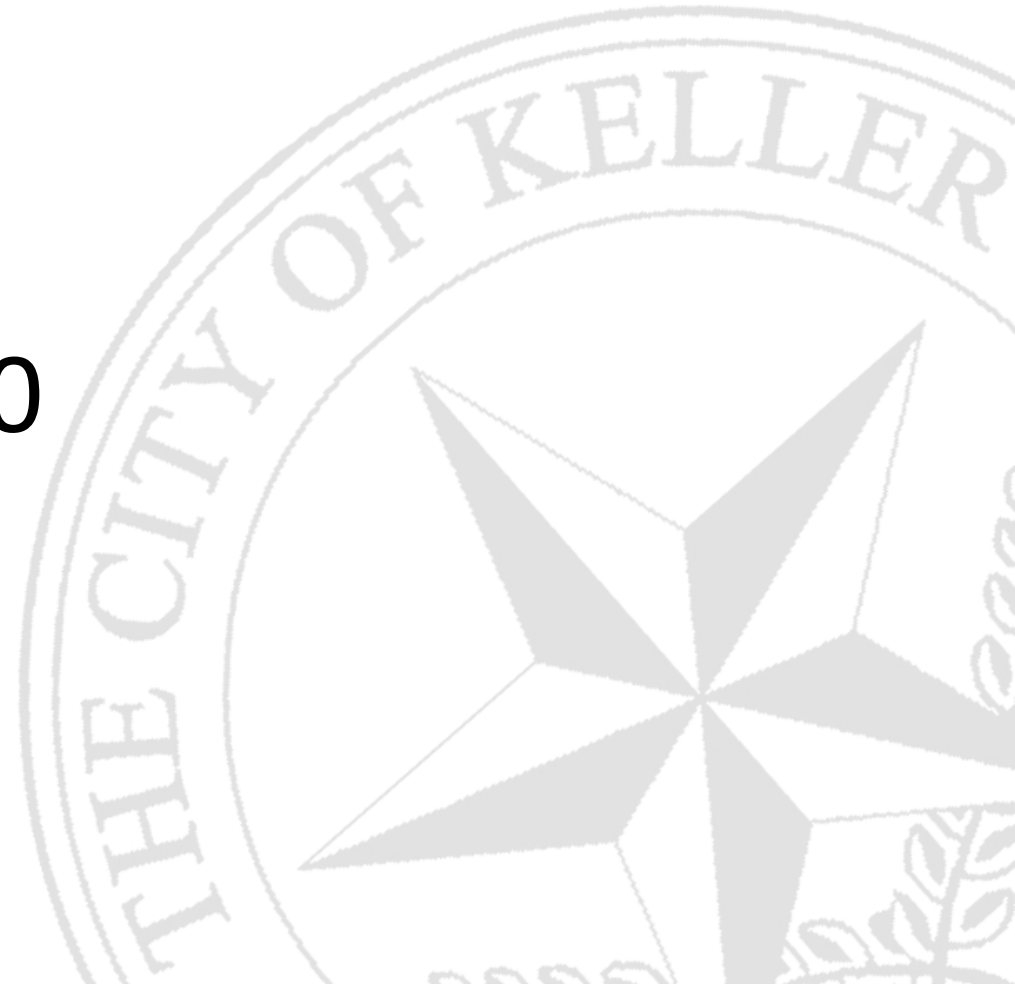
\$21,257



Item H-11: Trellises



\$80,420



Item H-11: Small Pavilions



\$46,746

Cost Summary

Item	OPCC	Bid
Base Bid	\$ 2,417,595	\$ 2,003,006
Alternate #1 Large Pavilion Slab	\$ 18,000	\$ 10,483
Alternate #2 Eastern Trail and Ramp Connections	\$ 153,520	\$ 114,692
Alternate #3 Improvements at Former Pool Area	\$ 73,861	\$ 67,433
Alternate #4 Northern Trail and Ramp Connections	\$ 121,328	\$ 139,274
Alternate #5 Small Pavilion Slabs and Hilltop Trail	\$ 84,999	\$ 106,330
Restroom	\$ 180,325	\$ 228,568
Playground	\$ 162,557	\$ 183,777
Large Pavilion	\$ 56,187	\$ 45,115
Bench Shade Structure	\$ 8,000	\$ 21,257
Small Pavilions	\$ 50,548	\$ 46,746
Grand Total	\$ 3,326,920	\$ 2,966,681

Excellence • Integrity • Service • Creativity • Communication

Funding Summary

Item	Amount
Total Cost	\$ 2,966,681
KDC Funded	\$ 2,503,619
Delta	\$ 463,062
Park Development Fee Fund Balance*	\$ 463,727
KDC Unassigned Fund Balance*	\$ 4,014,716



Questions?
Cody Maberry
817-743-4002