

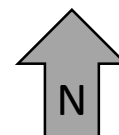
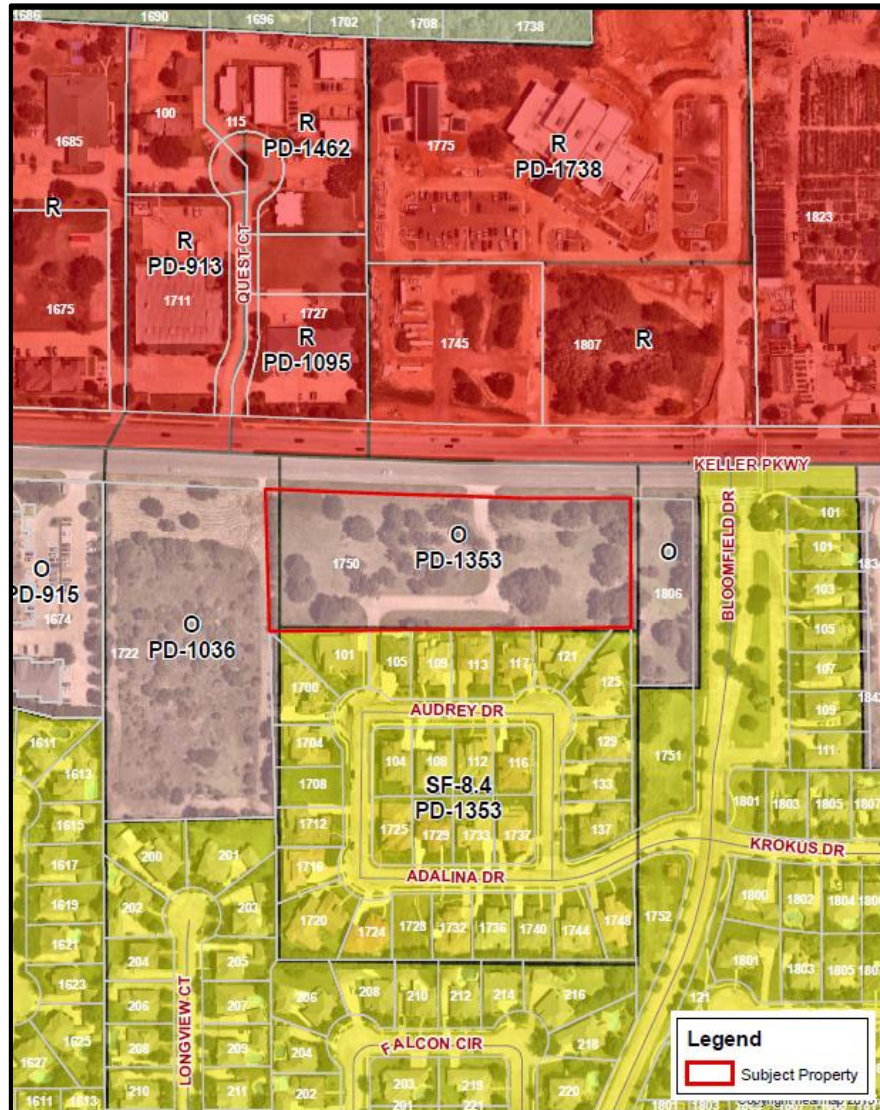
## Item H-3

PUBLIC HEARING: Consider an ordinance approving a Planned Development Amendment from PD-O (Planned Development - Office) to PD-O (Planned Development - Office), amending the Adalina at Bloomfield Planned Development (Ordinance No. 1353), to allow a reconfiguration of the building layout and to subdivide one (1) lot into six (6) lots, on an approximately 3.31-acre property, being Lot 1, Block C, Adalina at Bloomfield Addition, located on the south side of the Keller Parkway (FM1709), approximately one hundred sixty feet (160') west of the intersection of Keller Parkway (FM1709) and Bloomfield Drive, addressed as 1750 Keller Parkway (FM1709). Ambercrombie Holdings, LLC, owner. Castle Development, applicant. Matt Moore, Claymoore Engineering, engineer. (Z-17-0014)

**This item was tabled at the October 23, 2017 Planning and Zoning Commission meeting to ensure proper public notice was given to the surrounding properties. Notice of a public hearing was advertised fifteen (15) days prior to this meeting.**



## Item H-3 Zoning Map



## Item H-3 Aerial View



Excellence • Integrity • Service • Creativity • Communication