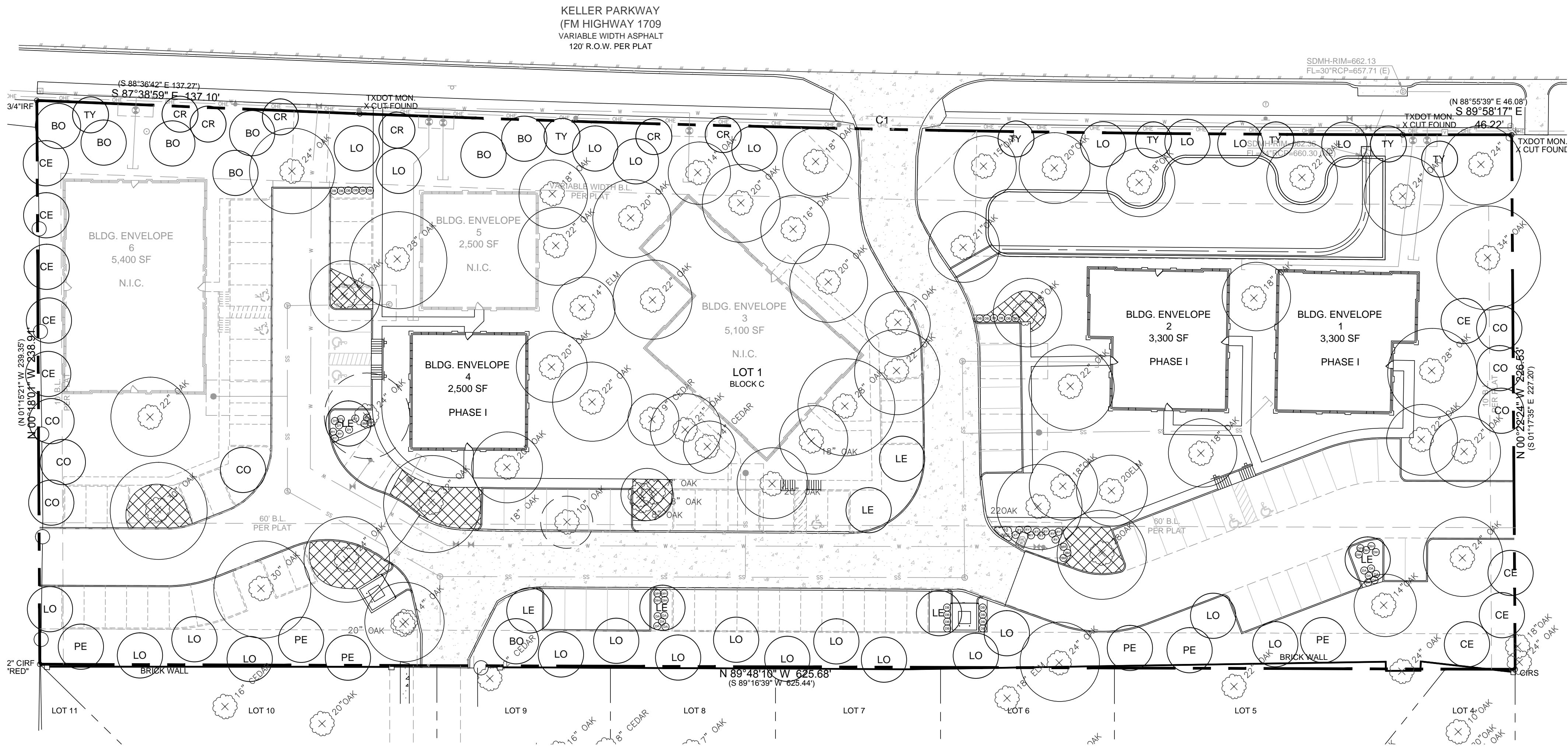


PLOTTED BY: SCOTTFULMIL
 3/20/2017 4:19 PM
 C:\USERS\SCOTTFULMIL\DOCUMENTS\AUTOCAD_L\RD\KELLER_ADELENA\ADALINAKELLER_L1.DWG
 LOCATION: LAST SAVED: 3/20/2017 4:12 PM



TREE LEGEND

- Canopy Trees

LO

Live Oak

CE

Cedar Elm

PE

Pecan

CR

Crapemyrtle
- CO

Chinquapin Oak
- LE

Lacebark Elm
- BO

Bur Oak
- TY

Tree Yaupon

SHRUB LEGEND

- DY
 Dwarf Yaupon
- DA
 Dwarf Abelia
- RY
 Red Yucca
- BM
 Big Muhly
- NGL
 New Gold Lantana
- DIH
 Dwarf Indian Hawthorne
- DB
 Dwarf Burford Holly

HATCH LEGEND

- Mulch under existing trees

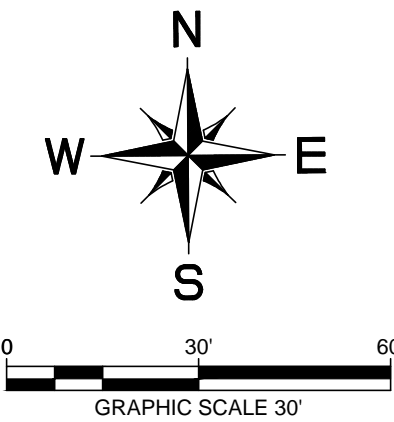
LANDSCAPE NOTES

- The project will have an underground automatic irrigation system to water all new plantings.
- Install 4" layer of shredded hardwood mulch to all planting beds.
- Install 4" steel edging between all shrub beds and grass areas.
- Shrub beds to have 12 inches of prepared planting mix (75% import topsoil, 15% composted amendment, 10% washed sand)
- Shredded hardwood mulch must contain long strands along with double shred finer material obtained from a local source.
- Install 4 inches of clean topsoil in all areas of the site disturbed by grading and construction operations. Topsoil shall be free from sticks, debris and rocks larger than 2 inches in diameter and have an organic matter level of 3 percent minimum and a pH range between 5.5 and 7.4 percent. Provide soil test analysis from a soil test laboratory showing soil makeup and organic percentage.
- Hydromulch all areas disturbed by construction activities.

Landscaping Required	Landscaping Provided
Keller Parkway Buffer: 625.68 ft 30' buffer with 4" caliper trees every 25' on center and 2 ornamental trees per 50 feet of frontage	30' buffer with 4" caliper trees every 25' on center (25 trees) and 2 ornamental trees per 50 feet of frontage (13 trees)
West Buffer: 238.91 ft 10' buffer with 3" caliper trees every 30' on center	10' buffer with 3" caliper trees every 30' on center (8 trees)
East Property Line Buffer: 226.53 ft 10' buffer with 3" caliper trees every 30' on center	10' buffer with 3" caliper trees every 30' on center (8 trees)
South Property Line Buffer: 625.68 ft 10' buffer with 3" caliper trees every 30' on center	10' buffer with 3" caliper trees every 30' on center (21 trees)
Parking Lot Landscaping: 100% screened with shrubs or berms adjacent to ROW 9' by 18' landscape islands every 12 spaces with large canopy trees 1 tree per 40' on continuous islands perpendicular to parking spaces 15% of parking lot shall be landscaped	Shrub screening provided for any parking facing Keller Parkway 13 landscape islands 10 proposed parking trees provided 10 existing parking trees parking lot land area provided
4,720 sf	6,724 sf

PLANT LIST

CANOPY TREES				
24	LO	Live Oak	Quercus virginiana	4" cal. B&B 13' ht. 6' spread
9	CE	Cedar Elm	Ulmus crassifolia	4" cal. B&B 14' ht. 6' spread
7	LE	Lacebark Elm	Ulmus parviflora	3" cal. B&B 12' ht. 6' spread
7	CO	Chinquapin Oak	Quercus muhlenbergia	4" cal. B&B 14' ht. 6' spread
6	PE	Pecan	Carya illinoensis 'Caddo'	3" cal. B&B 12' ht. 5' spread
8	BO	Bur Oak	Quercus macrocarpa	4" cal. B&B 13' ht. 6' spread
ORNAMENTAL TREES				
7	TY	Tree Yaupon	Ilex vomitoria	30 gal. 8' ht. multi-trunk female
6	CR	Crapemyrtle	Lagerstroemia indica 'Tuscarora'	30 gal. 8' ht. 3 trunk 2 1/2" cal. min.
SHRUBS & GROUNDCOVERS				
5	DY	Dwarf Yaupon	Ilex vomitoria 'Nana'	5 gal. 36" oc
11	DA	Dwarf Abelia	Abelia x grandiflora 'Ed. Goucher'	5 gal. 36" oc
13	RY	Red Yucca	Hesperaloe parviflora	5 gal. 36" oc
6	BM	Big Muhly	Muhlenbergia lindheimeri	5 gal. 36" oc
10	NGL	New Gold Lantana	Lantana 'New Gold'	1 gal. 24" oc
9	DIH	Dwarf Indian Hawthorne	Raphiolepis indica 'Clara'	5 gal. 36" oc
20	DB	Dwarf Burford Holly	Ilex cornuta 'Burfordii Nana'	5 gal. 36" oc



REVIEWED
 CITY OF KELLER
 Released for Construction
 Date _____

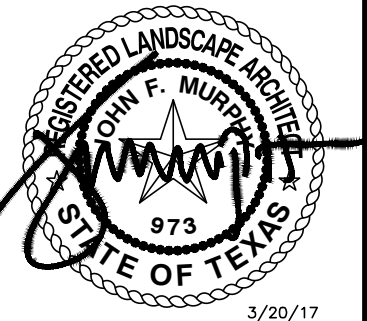
Public Works Director / City Engineer

TEXAS REGISTRATION #14199

 PHONE: 817.28.0022
 1900 CENTRAL DRIVE, SUITE 400
 BEVERLY, TX 76001
 WWW.CLAYMOORE.COM

site integration studio
 Landscape Architecture - Sustainable Site Planning - Natural Resource Design
 John F. Murphy, ASLA
 6647 Oak Hill Blvd.
 Tyler, TX 75703
 John@siteint.com
 scott@siteint.com

512.632.3822 - Mobile
 903.533.8898 - Tyler
 512.589.9584 - Austin
 www.siteint.com



ADALINA AT
 BLOOMFIELD
 KELLER, TX

LANDSCAPE PLAN

DESIGN:	HCV
DRAWN:	HCV
CHECKED:	CLC
DATE:	3/20/2017
SHEET	
L-1	
File No. 2015-064	