



PROJECT INFORMATION
ANDY'S FROZEN CUSTARD - KELLER
981 KELLER PARKWAY, KELLER, TX

ISSUE

FEBRUARY 14, 2018

ARCHITECT
urban bobcat Architects, PC
916 BRYAN AVENUE STE. 104
FT. WORTH, TX 76104
PH: (817) 335-1121
CONTACT: MATT GREEN, AIA
WWW.URBANBOBCAT.COM

CIVIL ENGINEER:
DUNAWAY ASSOCIATES L.P.
550 BAILEY AVENUE STE. 400
FORT WORTH, TEXAS 76107
PH: (817) 335-1121
CONTACT: CHRIS BIGGERS, PE

STRUCTURAL ENGINEER:
DUNAWAY ASSOCIATES L.P.
550 BAILEY AVENUE STE. 400
FORT WORTH, TEXAS 76107
PH: (817) 335-1121
CONTACT: BRIAN BOWDEN, PE

M.E.P. ENGINEER:
Jordan & Skala Engineers, Inc.
17855 N. DALLAS PKWY, SUITE 320,
DALLAS, TX 75287

PH 1: 468-395-1616
CONTACT: BILL SCHULTE, PE

NOTES:

EXTERIOR FINISH SCHEDULE

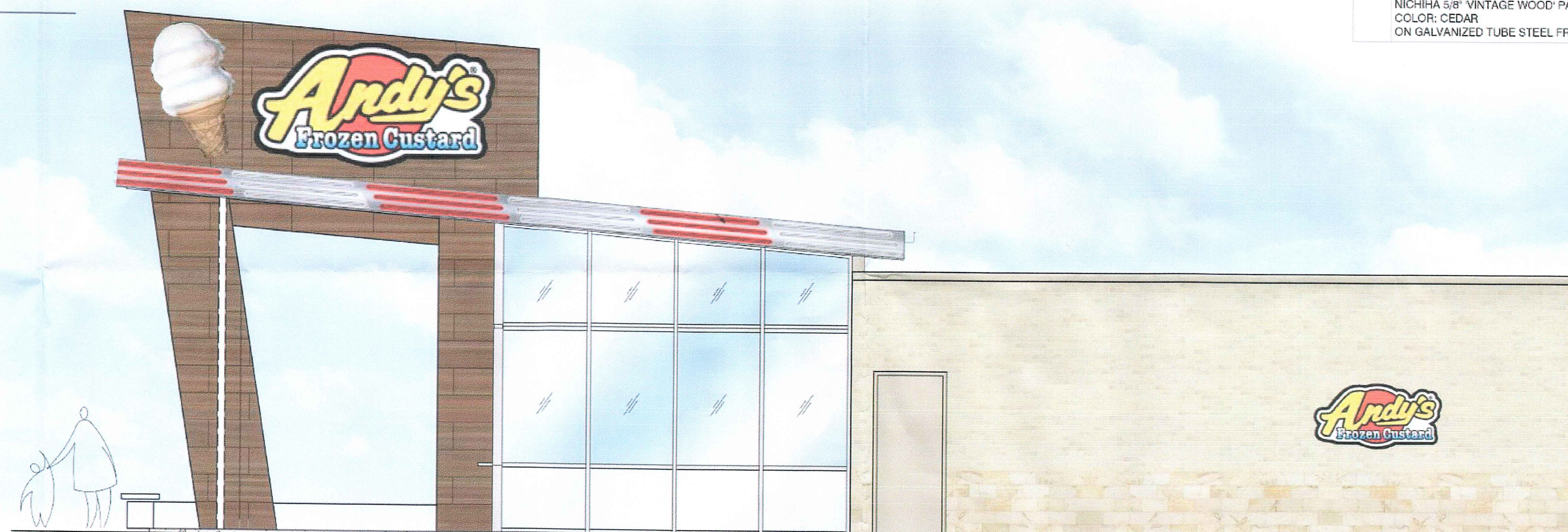
#	DESCRIPTION
C-1	COPING TYPE 1: GALV. METAL PARAPET CAP - COLOR TO MATCH MASONRY
FC-1	FIBER CEMENT TYPE 1: 5/16" HARDIE PANEL® COLOR PLUS EXT. 4' x 10' SECTIONS ON 3/4" BATTENS COLOR: LIGHT MIST; SMOOTH FINISH
GL-1	GLAZING TYPE 1: EFFCO 433 FRONT SET STOREFRONT WITH 1" INSULATED GLAZING, CLEAR OVER CLEAR
M-1	MASONRY TYPE 1: STONE - QUARRY LIMESTONE
M-2	MASONRY TYPE 2: BRICK - LIGHT TAN
M-3	MASONRY TYPE 3: SPLIT-FACE CMU - LIGHT TAN
N-1	PERIMETER L.E.D. LIGHTING BY OTHERS ON EXTENT OF ANODIZED ALUMINUM FASCIA
S-1	SOFFIT TYPE 1: GOLD BOND EXTERIOR GYPSUM BOARD, WITH A STC DIRECT APPLIED FINISH, COLOR: WHITE
W-1	FIBER PANEL (WOOD-LOOK) TYPE 1: NICHHA 5/8" VINTAGE WOOD PANELS COLOR: CEDAR ON GALVANIZED TUBE STEEL FRAME

KEYNOTES:

1. ROOF DRAINS BELOW SIDEWALK TO STORM SEWER -
NOTE EXPELL WATER UNDER SIDEWALK TO CURB -
NOT ONTO WALK.
2. WHITE FILM APPLIED TO GLAZING - TYP
3. ELECTRIC STUB
4. TACTILE ALUMINUM EXIT SIGNAGE IN COMPLIANCE
WITH SECTION 1011.3 IBC 2006 SURFACE MOUNTED
TO DOOR.
5. TACTILE ALUMINUM RESTROOM SIGNAGE IN
COMPLIANCE WITH SECTION 1110.1 IBC 2006
SURFACE MOUNTED TO DRYWALL.
6. PROVIDE 8" CLEAR ACCESSIBLE EGRESS PATH.
7. CENTERLINE OF LIGHTS TO ALIGN W/ MULLIONS.
SPACE EQUALLY WHERE MULLION DO NOT EXIST
8. ROOF STRUCTURE WITH CLEAR ANODIZED ALUMINUM
FASCIA WITH 3 CONTINUOUS BANDS OF NEON
TUBING
9. INSTALL CORNER GUARDS, TYP.
10. PROVIDE HOT AND COLD WATER HOSE BIB ON WALL
BEHIND AND ADJACENT TO CUSTARD MACHINES.
11. FIRE EXTINGUISHER AND CABINET - SEE 4/A701
12. COORDINATE INSTALLATION OF WALK-IN COOLER AND
FREEZER W/ SUPPLIER
13. ACCORDION DOOR - NOT USED THIS PROJECT
14. STEEL PIPE BOLLARD - 4" DIAMETER SCHEDULE 40
STEEL PIPE - 4' ABOVE GRADE W/ 2' CORE BELOW
GRADE
15. 5" DIAMETER DOWNSPOUT - CONNECTED TO STORM
SEWER PER CIVIL PLANS
16. OCCUPANCY LOAD SIGNAGE IN COMPLIANCE WITH
SECTION 1004.3 IBC 2006 - SURFACE MOUNTED
ABOVE DOOR
17. CORNER TO BE BUTT-GLAZED WITH A 45 DEGREE
MULLION.
18. CUSTARD MACHINES TO STRADDLE FLOOR SINKS
19. ANDY'S MENU AND POSTER SIGNAGE BY OTHERS -
VERIFY INSTALLED LOCATION W/ OWNER
20. CASED OPENING FOR WALK-IN COOLER ACCESS
21. MAINTAIN A MINIMUM OF 10" CLEAR ON OPERABLE
SIDE OF WALK-IN COOLER AND FREEZER -
COORDINATE DETAILING W/ MFG.
22. TRASH / RECYCLING PER OWNER
23. ALL EXPOSED DUCTWORK TO BE PAINTED WHITE TO
MATCH GWB CEILING
24. ROOF CONSTRUCTION - 60 MIL WHITE TPO ROOFING
MECHANICALLY FASTENED ON 1" RIGID INSULATION
OVER TJI'S PER STRUCTURAL WITH R-30 INSULATION
25. PROVIDE SOLID BLOCKING FOR ALL SHELVES & WALL
MOUNTED EQUIPMENT - SEE A203 FOR LOCATIONS
26. COLUMNS PER STRUCTURAL
27. ANDY'S FROZEN CUSTARD NEON CONE SIGN "MADE
FRESH EVERY HOUR" - LOCATED INSIDE STORE IN
FRONT OF STOREFRONT GLAZING - SUSPEND FROM
HORIZONTAL MULLION AND CONCEAL POWER
SUPPLY ALONG INSIDE FACE OF MULLION
28. ANDY'S FROZEN CUSTARD SPRECHER ROOT BEER
NEON SIGN - LOCATED INSIDE STORE IN FRONT OF
STOREFRONT GLAZING - SUSPEND FROM
HORIZONTAL MULLION AND CONCEAL POWER
SUPPLY ALONG INSIDE FACE OF MULLION
29. SQUARE CUT ROOF EDGE
30. SITE WORK PER CIVIL PLANS AND SPECIFICATIONS
31. PREFINISHED METAL BOX GUTTER
32. EASH-SERV PRODUCTS INC. - SS SERIES IN-LINE SIDE
SLIDER - DRIVE THRU WINDOW PER WINDOW
SCHEDULE
33. CAP AND SILL FLASHING AT TOP DATUM OF MASONRY
VENNER AND FREESTANDING WALL, TYP.
34. FOUNDATION PER STRUCTURAL
35. WALL TYPE PER PLAN
36. DUCTWORK LOCATION AND SIZING PER MEP
37. SUSPENDED CEILING, PER DETAIL
38. STAINLESS STEEL CORNER GUARDS



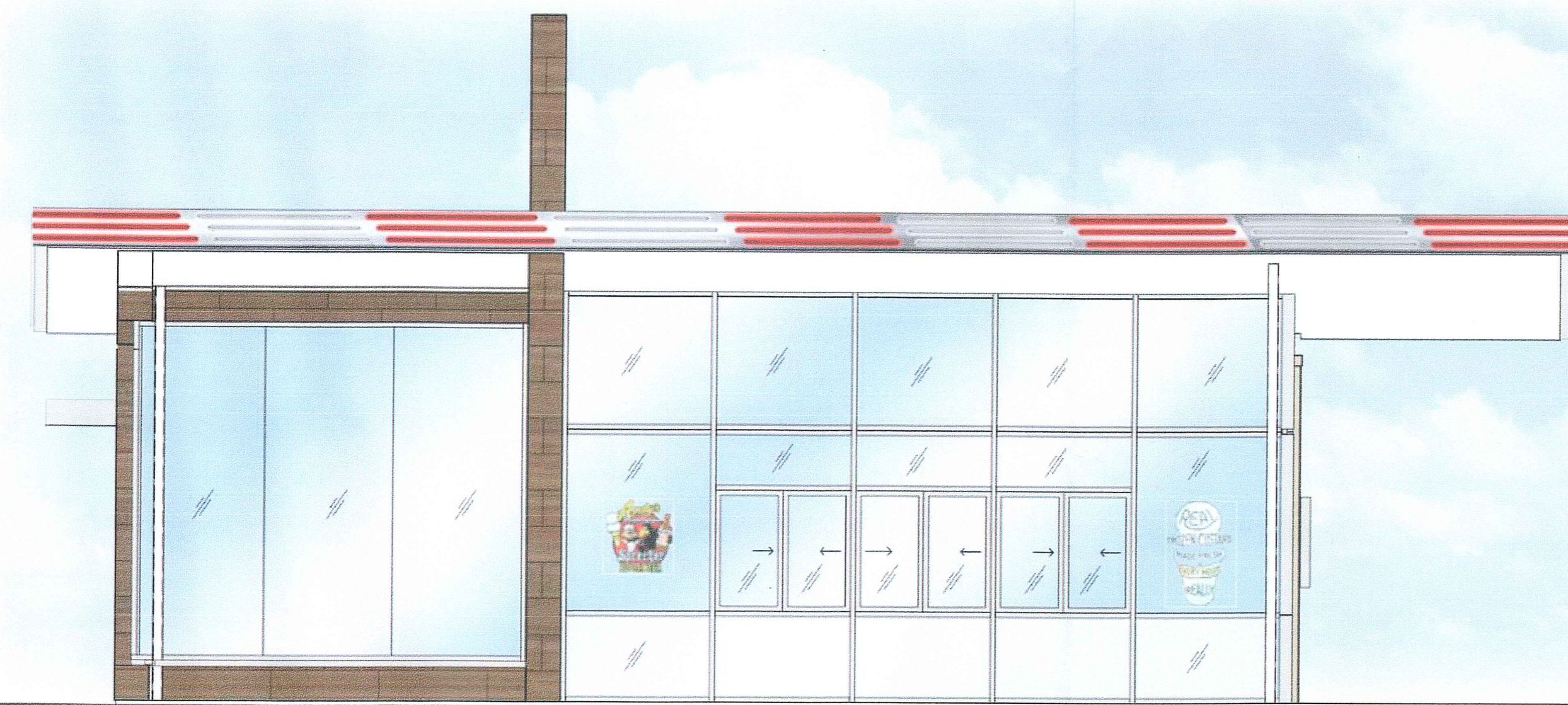
4 WEST ELEVATION
A301 scale: 1/4" = 1'-0"



3 EAST ELEVATION
A301 scale: 1/4" = 1'-0"



2 NORTH ELEVATION
A301 scale: 1/4" = 1'-0"



1 SOUTH ELEVATION
A301 scale: 1/4" = 1'-0"

REVISION SCHEDULE

NO.	DATE	ISSUE

This drawing has been prepared under the architect's supervision. The architect disclaims any responsibility for the existing building structure, existing site conditions, existing construction elements, and any drawings or documents used for this project that are not signed and sealed by the architect. The information herein is of proprietary nature and is submitted in confidence for the use of our clients only. Unauthorized reproduction, distribution, or dissemination, in whole or in part is prohibited. The information contained herein is and remains the property of urban bobcat Architects, PC and its use or possession of this information confers no right in or license to disclose to others the subject matter contained herein for any but authorized purposes. All rights reserved. Copyright © 2018.

Drawn By: MFG Architect: MATT GREEN, AIA
Project Number: 17-196-03 TX License Number: 26792

02/14/2018

SHEET
EXTERIOR ELEVATIONS

A301