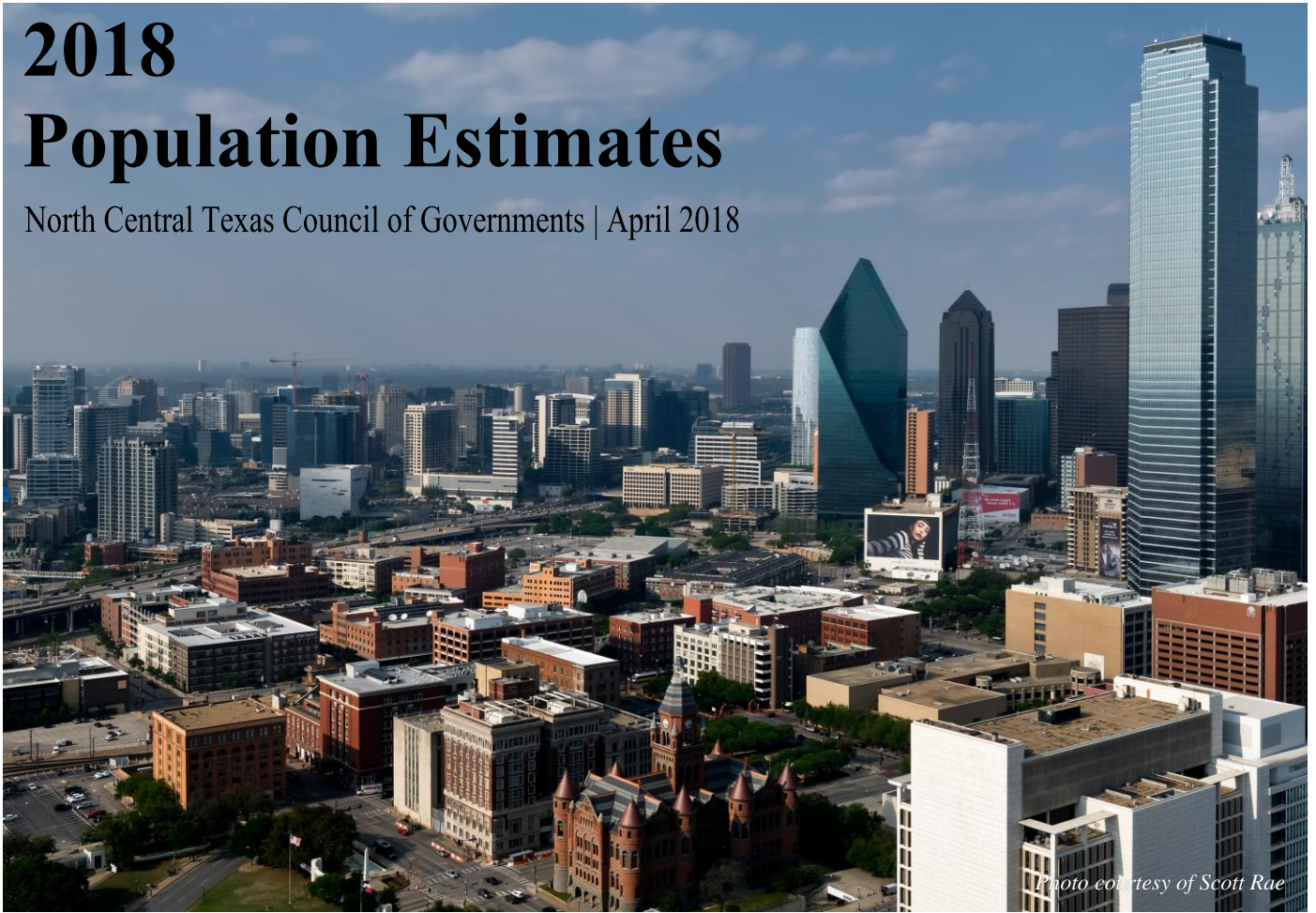


# 2018 Population Estimates

North Central Texas Council of Governments | April 2018



*Photo courtesy of Scott Rae*

## Population Estimates

Population estimates are based on current housing inventories for cities in the NCTCOG Region with populations of 1,000 or more. Cities are listed in the county that contains the majority of the city's population.

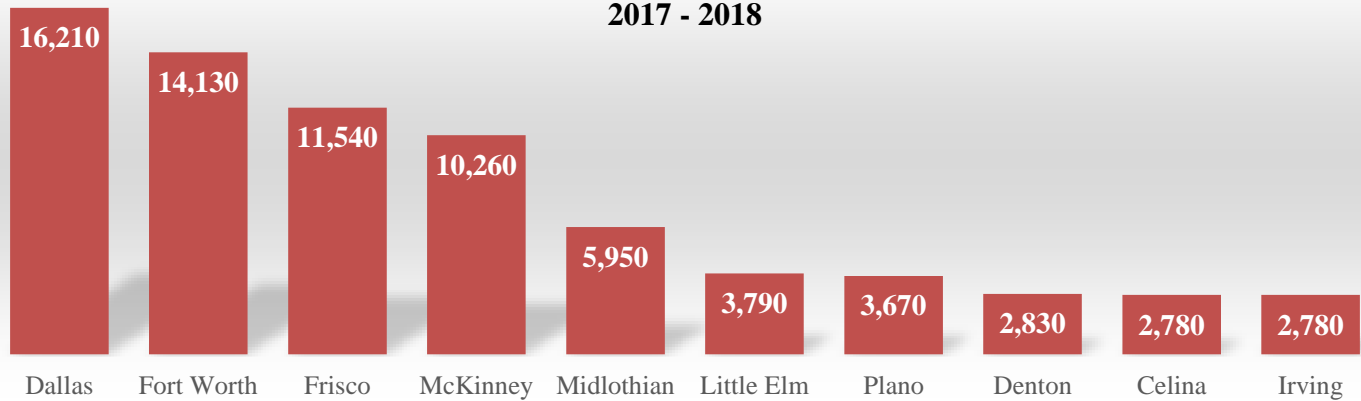
## Executive Summary

The estimated January 1, 2018 population for the NCTCOG region is 7,390,080. Last year, the region added 143,070 people. In 2017, 12 cities grew by more than 10%. The city of Dallas led the region in growth, adding 16,210 people last year while Fort Worth added 14,130, followed by Frisco with 11,540. Collin, Denton, Dallas, and Tarrant counties each added more than 20,000 people last year, accounting for 82% of the regional growth.

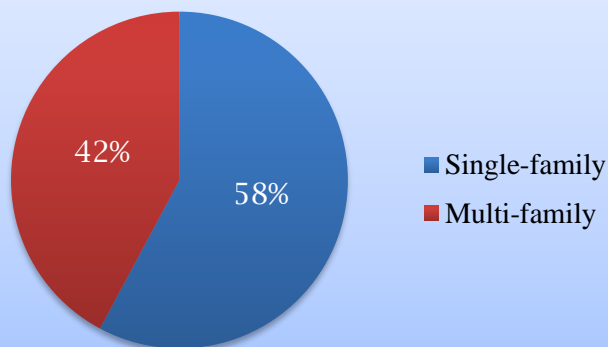
Residential construction continued to trend upward as more corporate relocations have continued to play a major role in the surge in growth. Since 2000, the region has grown by over 39%. More than 48,000 new residential units were completed in 2017 making last year the most active year for new residential construction since 2007. The city of Dallas led the way in residential units with more than 9,000 completions last year. More than 80% of these new units were multi-family. Dallas accounted for one third of all new multi-family units added to the region in 2017. Fort Worth had more than 6,000 residential completions. The top 10 cities in new construction accounted for 60% of all units built last year. The north central Texas region should continue to be one of the leading destinations for people looking to relocate to an area with a mild climate, relatively low cost of living, as well as a vibrant and diversified workforce.

# Highlights

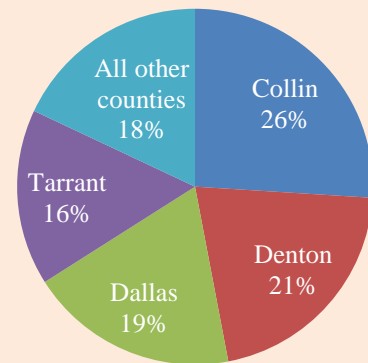
**Top 10 Cities  
Highest Absolute Population Growth  
2017 - 2018**



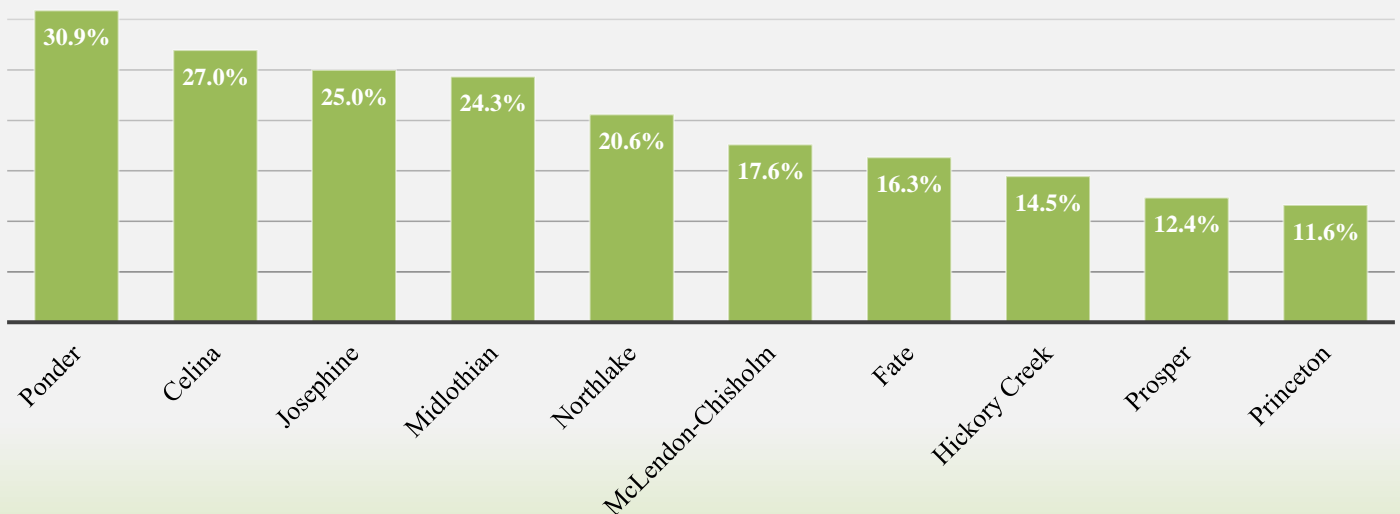
**Housing Units Added in 2017**



**County Percent Share of Regional  
Population Growth 2017 - 2018**



**Top 10 Cities  
Highest Percent Population Growth  
2017 - 2018**



## 2018 Population Estimates, City by County

	2010 Census Population April 1	2017 Estimate January 1	2018 Estimate January 1	2017 - 2018 Absolute Change	2017 - 2018 Percent Change
<b>Collin County</b>	<b>782,341</b>	<b>932,530</b>	<b>969,730</b>	<b>37,200</b>	<b>4.0%</b>
Allen	84,246	95,350	96,870	1,520	1.6%
Anna	8,249	12,390	13,690	1,300	10.5%
Celina	6,028	10,310	13,090	2,780	27.0%
Fairview	7,248	9,110	9,520	410	4.5%
Farmersville	3,301	3,330	3,330	0	0.0%
Frisco	116,989	161,400	172,940	11,540	7.1%
Josephine	812	1,160	1,450	290	25.0%
Lavon	2,219	3,220	3,510	290	9.0%
Lowry Crossing	1,711	1,710	1,710	0	0.0%
Lucas	5,166	7,030	7,710	680	9.7%
McKinney	131,117	169,710	179,970	10,260	6.0%
Melissa	4,695	8,850	9,580	730	8.2%
Murphy	17,708	19,980	20,010	30	0.2%
Parker	3,811	4,440	4,600	160	3.6%
Plano	259,841	277,720	281,390	3,670	1.3%
Princeton	6,807	9,460	10,560	1,100	11.6%
Prosper	9,423	20,160	22,650	2,490	12.4%
St. Paul	1,066	1,090	1,090	0	0.0%
Wylie	41,427	48,140	49,500	1,360	2.8%
Split Cities Adjustment	31,426	15,580	11,090		
Remainder of County	39,051	52,390	55,470	3,080	5.9%

	2010 Census Population April 1	2017 Estimate January 1	2018 Estimate January 1	2017 - 2018 Absolute Change	2017 - 2018 Percent Change
<b>Dallas County</b>	<b>2,368,139</b>	<b>2,502,270</b>	<b>2,529,150</b>	<b>26,880</b>	<b>1.1%</b>
Addison	13,056	15,730	15,760	30	0.2%
Balch Springs	23,728	24,480	24,660	180	0.7%
Cedar Hill	45,028	47,320	47,480	160	0.3%
Cockrell Hill	4,193	4,160	4,170	10	0.2%
Coppell	38,659	40,820	41,100	280	0.7%
Dallas	1,197,816	1,270,170	1,286,380	16,210	1.3%
DeSoto	49,047	52,120	52,870	750	1.4%
Duncanville	38,524	39,240	39,470	230	0.6%
Farmers Branch	28,616	31,560	31,590	30	0.1%
Garland	226,876	234,710	236,030	1,320	0.6%
Glenn Heights	11,278	11,680	11,680	0	0.0%
Grand Prairie	175,396	187,050	189,430	2,380	1.3%
Highland Park	8,564	8,510	8,520	10	0.1%

	2010 Census Population April 1	2017 Estimate January 1	2018 Estimate January 1	2017 - 2018 Absolute Change	2017 - 2018 Percent Change
Hutchins	5,338	5,350	5,950	600	11.2%
Irving	216,290	234,710	237,490	2,780	1.2%
Lancaster	36,361	37,730	37,880	150	0.4%
Mesquite	139,824	143,060	143,350	290	0.2%
Richardson	99,223	107,400	110,140	2,740	2.6%
Rowlett	56,199	57,840	58,830	990	1.7%
Sachse	20,329	23,950	24,720	770	3.2%
Seagoville	14,835	15,900	16,180	280	1.8%
Sunnyvale	5,130	5,440	5,540	100	1.8%
University Park	23,068	22,820	22,890	70	0.3%
Wilmer	3,682	4,210	4,290	80	1.9%
Split Cities Adjustment	(120,096)	(131,450)	(135,210)		
Remainder of County	7,175	7,760	7,960	200	2.6%

	2010 Census Population April 1	2017 Estimate January 1	2018 Estimate January 1	2017 - 2018 Absolute Change	2017 - 2018 Percent Change
<b>Denton County</b>	<b>662,614</b>	<b>814,710</b>	<b>844,260</b>	<b>29,550</b>	<b>3.6%</b>
Argyle	3,282	3,920	4,040	120	3.1%
Aubrey	2,595	3,110	3,200	90	2.9%
Bartonville	1,469	1,670	1,680	10	0.6%
Carrollton	119,097	130,820	132,330	1,510	1.2%
Copper Canyon	1,334	1,390	1,430	40	2.9%
Corinth	19,935	20,800	21,030	230	1.1%
Cross Roads	1,563	1,950	1,980	30	1.5%
Denton	113,383	128,160	130,990	2,830	2.2%
Double Oak	2,867	2,970	2,960	(10)	(0.3%)
Flower Mound	64,669	71,850	73,130	1,280	1.8%
Hickory Creek	3,247	3,870	4,430	560	14.5%
Highland Village	15,056	15,530	15,540	10	0.1%
Justin	3,246	3,640	3,790	150	4.1%
Krugerville	1,662	1,690	1,810	120	7.1%
Krum	4,157	4,890	4,900	10	0.2%
Lake Dallas	7,105	7,260	7,260	0	0.0%
Lewisville	95,290	103,640	104,780	1,140	1.1%
Little Elm	25,898	38,250	42,040	3,790	9.9%
Northlake	1,724	3,010	3,630	620	20.6%
Oak Point	2,786	3,210	3,440	230	7.2%
Pilot Point	3,856	4,130	4,120	(10)	(0.2%)
Ponder	1,395	1,780	2,330	550	30.9%
Providence	4,786	6,310	6,550	240	3.8%
Roanoke	5,962	8,040	8,330	290	3.6%

	2010 Census Population April 1	2017 Estimate January 1	2018 Estimate January 1	2017 - 2018 Absolute Change	2017 - 2018 Percent Change
Sanger	6,916	8,100	8,400	300	3.7%
Shady Shores	2,612	2,660	2,680	20	0.8%
The Colony	36,328	41,160	42,090	930	2.3%
Trophy Club	8,024	11,250	11,370	120	1.1%
Split Cities Adjustment	35,292	59,910	67,530		
Remainder of County	67,078	119,740	126,470	6,730	5.6%

	2010 Census Population April 1	2017 Estimate January 1	2018 Estimate January 1	2017 - 2018 Absolute Change	2017 - 2018 Percent Change
<b>Ellis County</b>	<b>149,610</b>	<b>173,410</b>	<b>183,360</b>	<b>9,950</b>	<b>5.7%</b>
Ennis	18,513	18,660	18,910	250	1.3%
Ferris	2,436	2,480	2,690	210	8.5%
Italy	1,863	1,850	1,850	0	0.0%
Midlothian	18,037	24,450	30,400	5,950	24.3%
Oak Leaf	1,298	1,370	1,380	10	0.7%
Ovilla	3,492	3,920	4,040	120	3.1%
Palmer	2,000	2,070	2,130	60	2.9%
Red Oak	10,769	12,600	12,790	190	1.5%
Waxahachie	29,621	34,410	35,550	1,140	3.3%
Split Cities Adjustment	3,154	3,290	3,480		
Remainder of County	58,427	68,310	70,140	1,830	2.7%

	2010 Census Population April 1	2017 Estimate January 1	2018 Estimate January 1	2017 - 2018 Absolute Change	2017 - 2018 Percent Change
<b>Erath County</b>	<b>37,890</b>	<b>43,850</b>	<b>44,200</b>	<b>350</b>	<b>0.8%</b>
Dublin	3,654	3,770	3,790	20	0.5%
Stephenville	17,123	21,950	22,280	330	1.5%
Remainder of County	17,113	18,130	18,130	0	0.0%

	2010 Census Population April 1	2017 Estimate January 1	2018 Estimate January 1	2017 - 2018 Absolute Change	2017 - 2018 Percent Change
<b>Hood County</b>	<b>51,182</b>	<b>64,840</b>	<b>65,060</b>	<b>220</b>	<b>0.3%</b>
DeCordova	2,683	2,790	2,800	10	0.4%
Granbury	7,978	9,310	9,520	210	2.3%
Split Cities Adjustment	(18)	(20)	(20)		
Remainder of County	40,539	52,760	52,760	0	0.0%

	2010 Census Population April 1	2017 Estimate January 1	2018 Estimate January 1	2017 - 2018 Absolute Change	2017 - 2018 Percent Change
<b>Hunt County</b>	<b>86,129</b>	<b>94,350</b>	<b>95,960</b>	<b>1,610</b>	<b>1.7%</b>
Caddo Mills	1,338	1,460	1,480	20	1.4%
Commerce	8,078	8,240	8,260	20	0.2%
Greenville	25,557	26,800	27,060	260	1.0%

	2010 Census Population April 1	2017 Estimate January 1	2018 Estimate January 1	2017 - 2018 Absolute Change	2017 - 2018 Percent Change
Quinlan	1,394	1,430	1,440	10	0.7%
West Tawakoni	1,576	1,610	1,620	10	0.6%
Wolfe City	1,412	1,420	1,420	0	0.0%
Split Cities Adjustment	356	1,200	1,590		
Remainder of County	46,418	52,190	53,090	900	1.7%

	2010 Census Population April 1	2017 Estimate January 1	2018 Estimate January 1	2017 - 2018 Absolute Change	2017 - 2018 Percent Change
<b>Johnson County</b>	<b>150,934</b>	<b>165,070</b>	<b>168,890</b>	<b>3,820</b>	<b>2.3%</b>
Alvarado	3,785	4,210	4,360	150	3.6%
Burleson	36,690	43,960	44,860	900	2.0%
Cleburne	29,337	29,780	30,230	450	1.5%
Godley	1,009	1,060	1,090	30	2.8%
Grandview	1,561	1,620	1,650	30	1.9%
Joshua	5,910	6,680	6,770	90	1.3%
Keene	6,106	6,280	6,290	10	0.2%
Venus	2,960	3,470	3,730	260	7.5%
Split Cities Adjustment	(5,608)	(6,380)	(6,280)		
Remainder of County	69,184	74,390	76,190	1,800	2.4%

	2010 Census Population April 1	2017 Estimate January 1	2018 Estimate January 1	2017 - 2018 Absolute Change	2017 - 2018 Percent Change
<b>Kaufman County</b>	<b>103,350</b>	<b>116,140</b>	<b>119,670</b>	<b>3,530</b>	<b>3.0%</b>
Combine	1,942	2,010	2,030	20	1.0%
Crandall	2,858	3,170	3,230	60	1.9%
Forney	14,661	18,590	20,280	1,690	9.1%
Kaufman	6,703	6,670	6,730	60	0.9%
Kemp	1,154	1,170	1,170	0	0.0%
Mabank	3,035	3,230	3,320	90	2.8%
Talty	1,535	2,310	2,410	100	4.3%
Terrell	15,816	16,570	16,650	80	0.5%
Split Cities Adjustment	(1,281)	(1,340)	(1,360)		
Remainder of County	56,927	63,760	65,210	1,450	2.3%

	2010 Census Population April 1	2017 Estimate January 1	2018 Estimate January 1	2017 - 2018 Absolute Change	2017 - 2018 Percent Change
<b>Navarro County</b>	<b>47,735</b>	<b>49,170</b>	<b>49,740</b>	<b>570</b>	<b>1.2%</b>
Corsicana	23,770	24,040	24,120	80	0.3%
Kerens	1,573	1,700	1,710	10	0.6%
Rice	923	1,000	1,040	40	4.0%
Remainder of County	21,469	22,430	22,870	440	2.0%



	2010 Census Population April 1	2017 Estimate January 1	2018 Estimate January 1	2017 - 2018 Absolute Change	2017 - 2018 Percent Change
<b>Palo Pinto County</b>	<b>28,111</b>	<b>28,660</b>	<b>28,710</b>	<b>50</b>	<b>0.2%</b>
Mineral Wells	16,788	16,740	16,790	50	0.3%
Split Cities Adjustment	(2,144)	(2,140)	(2,140)		
Remainder of County	13,467	14,060	14,060	0	0.0%

	2010 Census Population April 1	2017 Estimate January 1	2018 Estimate January 1	2017 - 2018 Absolute Change	2017 - 2018 Percent Change
<b>Parker County</b>	<b>116,927</b>	<b>130,150</b>	<b>131,210</b>	<b>1,060</b>	<b>0.8%</b>
Aledo	2,716	3,930	4,240	310	7.9%
Annetta	1,288	2,740	2,760	20	0.7%
Hudson Oaks	1,662	2,110	2,120	10	0.5%
Reno	2,494	2,610	2,620	10	0.4%
Springtown	2,658	2,670	2,720	50	1.9%
Weatherford	25,250	27,660	27,900	240	0.9%
Willow Park	3,982	4,780	4,800	20	0.4%
Split Cities Adjustment	4,339	4,670	5,070		
Remainder of County	72,538	78,980	78,980	0	0.0%

	2010 Census Population April 1	2017 Estimate January 1	2018 Estimate January 1	2017 - 2018 Absolute Change	2017 - 2018 Percent Change
<b>Rockwall County</b>	<b>78,337</b>	<b>93,130</b>	<b>97,990</b>	<b>4,860</b>	<b>5.2%</b>
Fate	6,434	11,380	13,240	1,860	16.3%
Heath	6,921	7,820	8,180	360	4.6%
McLendon-Chisholm	1,373	2,780	3,270	490	17.6%
Rockwall	37,490	42,120	43,750	1,630	3.9%
Royse City	9,349	11,540	12,060	520	4.5%
Split Cities Adjustment	6,775	5,140	4,740		
Remainder of County	9,995	12,350	12,750	400	3.2%

	2010 Census Population April 1	2017 Estimate January 1	2018 Estimate January 1	2017 - 2018 Absolute Change	2017 - 2018 Percent Change
<b>Somervell County</b>	<b>8,490</b>	<b>9,420</b>	<b>9,640</b>	<b>220</b>	<b>2.3%</b>
Glen Rose	2,444	2,490	2,540	50	2.0%
Remainder of County	6,046	6,930	7,100	170	2.5%

	2010 Census Population April 1	2017 Estimate January 1	2018 Estimate January 1	2017-2018 Absolute Change	2017-2018 Percent Change
<b>Tarrant County</b>	<b>1,809,034</b>	<b>1,966,850</b>	<b>1,989,810</b>	<b>22,960</b>	<b>1.2%</b>
Arlington	365,438	382,230	383,950	1,720	0.4%
Azle	10,947	11,800	12,140	340	2.9%
Bedford	46,979	48,560	48,600	40	0.1%
Benbrook	21,234	22,260	22,760	500	2.2%
Blue Mound	2,394	2,390	2,390	0	0.0%
Colleyville	22,807	24,630	25,010	380	1.5%

	2010 Census Population April 1	2017 Estimate January 1	2018 Estimate January 1	2017-2018 Absolute Change	2017-2018 Percent Change
Crowley	12,838	14,440	14,660	220	1.5%
Dalworthington Gardens	2,259	2,330	2,330	0	0.0%
Edgecliff Village	2,776	3,220	3,220	0	0.0%
Eules	51,277	54,870	55,170	300	0.5%
Everman	6,108	6,110	6,090	(20)	(0.3%)
Forest Hill	12,355	12,500	12,840	340	2.7%
Fort Worth	741,206	815,430	829,560	14,130	1.7%
Grapevine	46,334	49,130	49,240	110	0.2%
Haltom City	42,409	42,740	42,740	0	0.0%
Haslet	1,517	1,720	1,730	10	0.6%
Hurst	37,337	38,410	38,410	0	0.0%
Keller	39,627	44,620	44,940	320	0.7%
Kennedale	6,763	7,420	7,420	0	0.0%
Lake Worth	4,584	4,710	4,730	20	0.4%
Lakeside	1,307	2,100	2,100	0	0.0%
Mansfield	56,368	63,670	65,660	1,990	3.1%
North Richland Hills	63,343	67,120	67,530	410	0.6%
Pantego	2,394	2,470	2,480	10	0.4%
Pelican Bay	1,547	1,650	1,720	70	4.2%
Richland Hills	7,801	7,920	7,920	0	0.0%
River Oaks	7,427	7,310	7,310	0	0.0%
Saginaw	19,806	21,320	21,730	410	1.9%
Sansom Park	4,686	4,680	5,050	370	7.9%
Southlake	26,575	28,880	29,580	700	2.4%
Watauga	23,497	23,600	23,610	10	0.0%
Westlake	992	1,310	1,380	70	5.3%
Westworth Village	2,472	2,620	2,620	0	0.0%
White Settlement	16,116	16,830	17,380	550	3.3%
Split Cities Adjustment	43,504	47,190	47,150		
Remainder of County	54,010	78,660	78,660	0	0.0%

	2010 Census Population April 1	2017 Estimate January 1	2018 Estimate January 1	2017 - 2018 Absolute Change	2017 - 2018 Percent Change
<b>Wise County</b>	<b>59,127</b>	<b>62,460</b>	<b>62,700</b>	<b>240</b>	<b>0.4%</b>
Alvord	1,334	1,340	1,350	10	0.7%
Aurora	1,220	1,410	1,440	30	2.1%
Boyd	1,207	1,360	1,380	20	1.5%
Bridgeport	5,976	6,130	6,150	20	0.3%
Chico	1,002	1,010	1,010	0	0.0%
Decatur	6,042	6,530	6,600	70	1.1%
New Fairview	1,258	1,460	1,480	20	1.4%
Newark	1,005	1,080	1,120	40	3.7%
Rhome	1,522	1,610	1,620	10	0.6%
Runaway Bay	1,286	1,370	1,370	0	0.0%
Split Cities Adjustment	3,597	3,600	3,600		
Remainder of County	33,678	35,560	35,580	20	0.1%



### Population by Planning Area

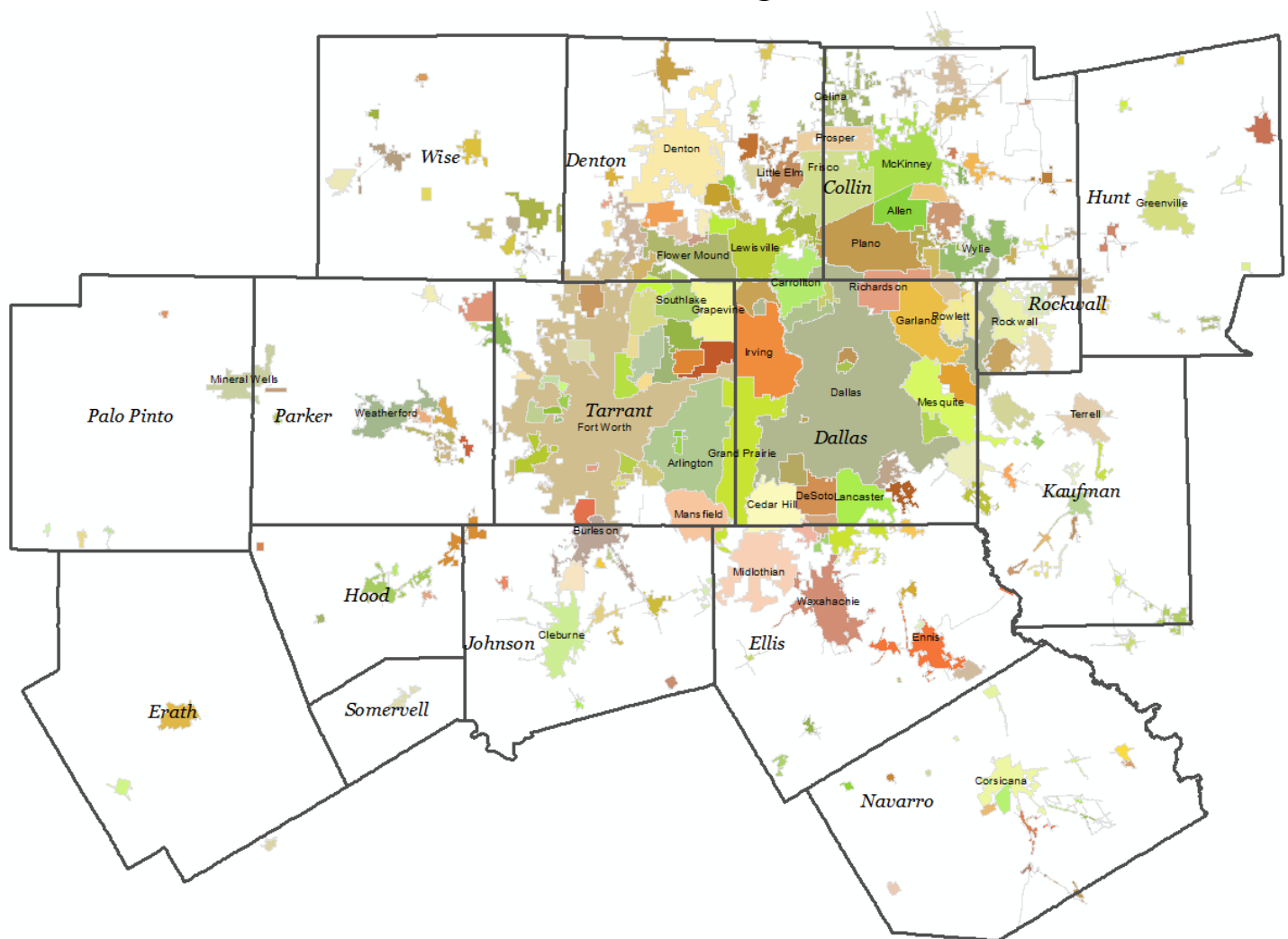
	2000 U.S. Census April 1	2010 U.S. Census April 1	2017 NCTCOG Estimate January 1	2018 NCTCOG Estimate January 1
16-County NCTCOG Region	5,309,277	6,539,950	7,247,010	7,390,080
12-County MPA*	5,197,317	6,417,724	7,115,910	7,257,790

\*The 12 county Dallas-Fort Worth Metropolitan Planning Area (MPA) consists of the following counties:

Collin	Ellis	Johnson	Rockwall
Dallas	Hood	Kaufman	Tarrant
Denton	Hunt	Parker	Wise

Source: U.S. Census Bureau, NCTCOG Population Estimates

## NCTCOG Region



This publication and other data produced by RIS can be found on the  
Regional Data Center: <http://data-nctcogis.opendata.arcgis.com/>.

## 2018 Population Estimates Methodology

NCTCOG uses the housing unit method for estimating current year population:

Estimated household population = estimated units \* estimated occupancy rate \* estimated persons per occupied unit

The calculation is performed for each unit type (single family, multi-family, other). The results are summed along with an estimate of group quarters population to arrive at a total population estimate. Every year, cities are asked to provide information about changes in housing stock and population in group quarters housing. Cities are also given the opportunity to review figures prior to release. The 2017 population estimates for some cities have been revised. The estimates included herein supersede any prior estimates.

### Split Cities

County population totals are adjusted for cities that have boundaries in more than one county. Cities that extend outside the NCTCOG Region show the city total. However, the portion of the city's population that is not in the region is not included in the county or regional totals. Cities whose boundaries extend into the NCTCOG Region, but do not have a majority of their population within the region are not included in the city listings.

Split Cities			
Azle	Flower Mound	Mabank	Rowlett
Burleson	Fort Worth	Mansfield	Royse City
Carrollton	Frisco	Mesquite	Sachse
Cedar Hill	Garland	Mineral Wells	Seagoville
Celina	Glenn Heights	Newark	Seven Points
Combine	Grand Prairie	Ovilla	Southlake
Coppell	Grapevine	Plano	Springtown
Cresson	Haslet	Prosper	Trophy Club
Crowley	Heath	Reno	Venus
Dallas	Josephine	Richardson	Westlake
Ferris	Lewisville	Roanoke	Wylie

**Disclaimer:** There are a variety of ways to estimate population for a given area. The North Central Texas Council of Governments has selected a method that accommodates the varying level of data available for local communities while focusing on consistency. These estimates were developed for regional planning activities and have not been evaluated for other uses. They are provided as an informational item and are likely to differ from estimates produced by others, including the cities and counties listed herein. The North Central Texas Council of Governments makes no warranty, express or implied, including warranties of merchantability and fitness for a particular purpose. Responsibility for the use of these data lies solely with the user.

### Research and Information Services (RIS)

NCTCOG's Research & Information Services Department performs demographic research on such topics as population, housing, and employment estimates; population, household, and employment projections; development monitoring; major employers; land use; and tabulation/analysis of Census data. The department also provides support to a regional Geographic Information System (GIS) and NCTCOG's internal computer network. Custom maps, data analysis, and special products are provided on a fee-for-service basis. To learn more about RIS at NCTCOG, visit: [www.nctcog.org/ris](http://www.nctcog.org/ris).

### North Central Texas Council of Governments

The North Central Texas Council of Governments (NCTCOG) is a voluntary association of, by, and for local governments, and was established to assist local governments in planning for common needs, cooperating for mutual benefit, and coordinating for sound regional development. NCTCOG's purpose is to strengthen both the individual and collective power of local governments and to help them recognize regional opportunities, eliminate unnecessary duplication, and make joint decisions. To learn more about NCTCOG, please visit [www.nctcog.org](http://www.nctcog.org).

© 2018 North Central Texas Council of Governments (NCTCOG). All rights reserved.  
This data is the property of NCTCOG and may not be sold, reproduced, distributed or displayed without NCTCOG's express written consent.



North Central Texas COG  
PO Box 5888  
Arlington, TX 76005  
[www.nctcog.org](http://www.nctcog.org)