

MEDSMITH

601 MAIN STREET  
SUITE 110  
KELLER, TX 76248

MEDSMITH

601 MAIN STREET  
SUITE 110  
KELLER, TX 76248

LINCOLN HARRIS CSG  
6688 N. CENTRAL EXPRESSWAY  
SUITE 300  
DALLAS, TX 75206  
214-461-2300



7.10.18

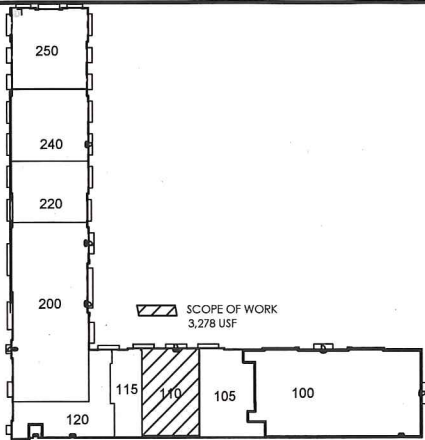
BID/PERMIT 7.10.18

SHEET TITLE:  
COVER SHEET

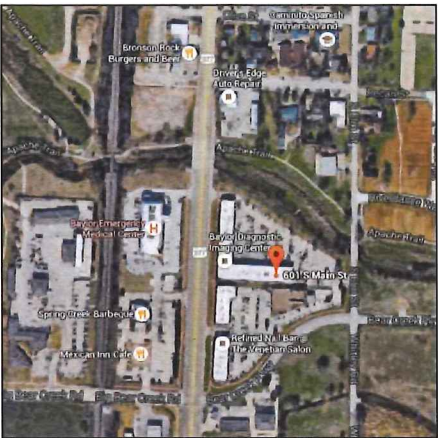
SHEET NO.:

A0.00

KEYPLAN



BUILDING LOCATION PLAN



DRAWING INDEX

SHEET	DESCRIPTION
ARCHITECTURAL DRAWINGS	
A0.00	COVER SHEET
A0.01	SPECIFICATIONS
A0.02	SPECIFICATIONS
A0.03	T&S SPECIFICATIONS
A0.04	T&S SPECIFICATIONS / PARTITION TYPES
A2.01	DEMO PLAN, FLOOR PLAN
A2.02	POWER PLAN, RCP
A2.03	FINISH PLAN AND SPECS
A5.01	INTERIOR ELEVATIONS, MILLWORK SECTIONS,
A5.01	XRAY SPECIFICATIONS - PHYSICIST PLAN

XRAY EQUIPMENT

C1	COVER SHEET
N1	NOTES/ CUSTOMER REQ'S.
A1	EQUIP. LAYOUT/ LEGEND
S1	STRUCTURAL NOTES
S2	ELECTRICAL LAYOUT / LEGEND
E1	ELECTRICAL LAYOUT DETAILS
E2	ELECTRICAL NOTES/ POWER SPECIFICATIONS
E4	ELECTRICAL NOTES / POWER SPECIFICATIONS
E5	SCHEMATIC RISER DIAGRAM

PROPERTY MANAGEMENT INFORMATION

CONSTRUCTION MANAGER LINCOLN HARRIS CSG SUSAN FRIDRICH 6688 N CENTRAL EXPY #300 DALLAS, TX 75206 SFRIDRICH@LPC.COM 214.461.2354	BUILDING ENGINEER LINCOLN HARRIS CSG TEMPLE BOWERS TBOWERS@MBRES.COM
---------------------------------------------------------------------------------------------------------------------------------------------------	-------------------------------------------------------------------------------

PROPERTY MANAGER

MB REAL ESTATE CHRISTIE CLENNEY 972-340-3987 cclenney@mbreal.com
---------------------------------------------------------------------------

TDLR PROJECT REGISTRATION DATA

PROJECT REGISTRATION NUMBER: EABPRJBXXX REGISTERED ACCESSIBILITY SPECIALIST: RON DAVIS 3801 MOTLEY DRIVE, SUITE J MESQUITE, TX 75150 972-720-3100 RON@RONDAVISCONSULTING.COM	SUITE 300 DALLAS, TX 75206 214-461-2300
---------------------------------------------------------------------------------------------------------------------------------------------------------------------------------------------------	-----------------------------------------------

BUILDING CODES

2015 INTERNATIONAL BUILDING CODE 2014 NATIONAL ELECTRIC CODE 2015 INTERNATIONAL MECHANICAL CODE 2015 INTERNATIONAL PLUMBING CODE 2015 INTERNATIONAL FIRE CODE (FIRE/LIFE SAFETY) 2015 INTERNATIONAL ENERGY CONSERVATION CODE
---------------------------------------------------------------------------------------------------------------------------------------------------------------------------------------------------------------------------------------------

PROJECT DATA

SPRINKLERED: YES OCCUPANCY GROUP: B 3,278 SQUARE FEET TOTAL OCCUPANT LOAD (1 OCCUPANT PER 100 SF): 33 EXITS REQUIRED: 1 EXITS PROVIDED: 2
----------------------------------------------------------------------------------------------------------------------------------------------------------

SHELL CONTRACTORS\*

FIRE ALARM AND SPRINKLER: WW ELECTRONICS BOBBY CHURCHMAN BCHURCHMAN@WWELECTRONICS.ORG 469-315-9065
----------------------------------------------------------------------------------------------------------------

\*GENERAL CONTRACTOR  
REQUIRED TO USE ALL LISTED.

ALTERNATES

PROVIDE LINE ITEM PRICING

#1. IN LIEU OF EXISTING TO REMAIN, PROVIDE NEW TILE AT FLOOR AND (2) WET WALLS  
IN RESTROOM, T-1.

GENERAL NOTES

CONTRACTOR SHALL CAREFULLY STUDY AND COMPARE THE CONSTRUCTION DOCUMENTS INCLUDING CONSULTANT'S DRAWINGS AND SHALL IMMEDIATELY REPORT ANY DISCREPANCIES, INCONSISTENCIES, OR OMISSIONS TO INTERIOR DESIGNER. CONTRACTOR SHALL PERFORM NO PORTION OF THE WORK AT ANY TIME WITHOUT CONSTRUCTION DOCUMENTS OR, WHERE REQUIRED, APPROVED SHOP DRAWINGS, PRODUCT DATA OR SAMPLES FOR SUCH PORTION OR THE WORK.

A.I.A. DOCUMENT A201 GENERAL CONDITIONS SHALL BE INCORPORATED INTO THESE DOCUMENTS.

G1 CONSTRUCTION DOCUMENTS

G1.1 ALL DIMENSIONS AND DESCRIPTIONS ON CONSTRUCTION DRAWINGS ARE COMPLEMENTARY. ANY WORK SHOWN OR REFERRED TO ON ANY CONSTRUCTION DOCUMENT SHALL BE PROVIDED AS THOUGH ON ALL RELATED DOCUMENTS.

G1.2 ANY CONFLICTS BETWEEN THE MEP DRAWINGS AND THE ARCHITECTURAL DRAWINGS ARE TO BE BROUGHT TO THE IMMEDIATE ATTENTION OF THE DESIGNER PRIOR TO CONSTRUCTION.

G1.3 THE USE OF THE WORD "PROVIDE" IN CONNECTION WITH ANY ITEM SPECIFIED IS INTENDED TO MEAN THAT SUCH SHALL BE FURNISHED, INSTALLED, AND CONNECTED, WHERE SO REQUIRED, EXCEPT AS OTHERWISE NOTED, BY THE CONTRACTOR.

G1.4 UNLESS NOTED OTHERWISE, ALL DRAWINGS HAVE BEEN PRODUCED TO SCALE. CONTRACTOR SHALL NOT DIRECTLY MEASURE OR "SCALE" SAID DRAWINGS TO ASCERTAIN ANY DIMENSION.

G2 PREBID SITE VISIT

G2.1 PRIOR TO THE BID, THE GENERAL CONTRACTOR SHALL EXAMINE THE SITE AND PORTIONS THEREOF WHICH WILL AFFECT THIS WORK AND SHALL COMPARE IT WITH THE DRAWINGS AND BE SATISFIED AS TO THE CONDITIONS UNDER WHICH WORK IS TO BE PERFORMED. THE GENERAL CONTRACTOR SHALL AT SUCH TIME ASCERTAIN AND CHECK LOCATIONS OF THE EXISTING STRUCTURE AND EQUIPMENT.

G2.2 CONTRACTOR SHALL VERIFY SIZE, LOCATION AND CHARACTERISTICS OF ALL MECHANICAL AND ELECTRICAL EQUIPMENT AND OPENINGS BEFORE CONSTRUCTION AND NOTIFY DESIGNER OF DISCREPANCIES PRIOR TO CONSTRUCTION.

G2.3 CONTRACTOR SHALL NOTIFY INTERIOR DESIGNER IN WRITING OF ANY VARIATIONS OR DISCREPANCIES FROM THE EXISTING CONDITIONS PRIOR TO BEGINNING CONSTRUCTION. THE WORK IN THE PROBLEM AREA SHALL NOT PROCEED UNTIL APPROVED BY INTERIOR DESIGNER. PROCEEDING WITH THE WORK SHALL CONSTITUTE ACCEPTANCE BY THE CONTRACTOR THAT CONDITIONS ARE CORRECT. THE SUBMISSION OF A BID WILL BE CONSTRUED AS EVIDENCE THAT SUCH AN EXAMINATION HAS BEEN MADE AND LATER CLAIMS FOR LABOR, EQUIPMENT AND/OR MATERIAL REQUIRED, OR FOR DIFFICULTIES ENCOUNTERED WHICH COULD HAVE BEEN FORESEEN HAD SUCH AN EXAMINATION BEEN MADE, WILL NOT BE RECOGNIZED.

G3 CONSTRUCTION PROGRESS SCHEDULE

G3.1 THE CONTRACTOR, AFTER BEING AWARDED THE CONTRACT, SHALL PREPARE AND SUBMIT TO THE DESIGNER AND THE TENANT AN ESTIMATED PROGRESS SCHEDULE OF THE WORK IN BAR CHART FORM.

G3.2 THE CONTRACTOR SHALL BE RESPONSIBLE FOR SECURING PERMITS FOR ALL PHASES OF THE WORK AS REQUIRED BY REFERRAL, STATE, COUNTY AND MUNICIPAL LAW, ORDINANCE AND/OR REGULATIONS.

G4 ORDER OF MATERIALS

G4.1 WITHIN FIVE (5) DAYS FROM AWARD OF CONTRACT, CONTRACTOR SHALL NOTIFY THE DESIGNER IN WRITING AS TO THE NAMES OF ALL SUBCONTRACTORS; AND SHALL CLARIFY THAT ALL MATERIALS AND EQUIPMENT NECESSARY FOR THE COMPLETION OF THE PROJECT HAVE BEEN ORDERED WITH CONFIRMED DELIVERY DATES, COORDINATED WITH THE CONSTRUCTION PROGRESS SCHEDULE. SUCH WRITTEN NOTIFICATION SHALL LIST ANY EXCEPTIONS, INCLUDING THE CAUSES AND REQUEST FOR SUBSTITUTIONS. CONTRACTOR SHALL PROVIDE A DETAILED SHOP DRAWING SUBMITTAL AND SAMPLE SCHEDULE.

G5 BUILDING STANDARDS

G5.1 THE TERM "BUILDING STANDARD" AS NOTED ON DRAWINGS AND AS SPECIFIED HEREIN REFERS TO ALL MATERIALS, LABOR, INSTALLATION, FABRICATION, ETC., PER BUILDING OWNER'S CRITERIA.

G6 SUBSTITUTIONS

G6.1 WHERE A PARTICULAR MANUFACTURER OR ITEM HAS BEEN SPECIFIED, AN EQUAL OR BETTER PRODUCT OF ANOTHER MANUFACTURER MAY BE ACCEPTED ONLY UPON REVIEW AND WRITTEN ACCEPTANCE BY THE DESIGNER. IT IS MANDATORY THAT SUCH REVIEW BE OBTAINED PRIOR TO BIDDING OR THE SUBSTITUTION WILL NOT BE CONSIDERED. ANY SUCH PROPOSED SUBSTITUTION SHALL BE SUBMITTED TO THE DESIGNER WITH ALL APPROPRIATE MANUFACTURER'S DATA AND LITERATURE. THE DESIGNER'S DECISION AS TO WHETHER A PRODUCT IS EQUAL OR SUPERIOR TO THE ONE SPECIFIED SHALL BE FINAL. THIS SECTION APPLIES TO ANY "OR EQUAL" NOTED IN THE SPECIFICATION.

G7 WORKMANSHIP AND MATERIALS

G7.1 ALL WORK SHALL BE DONE IN THE FINEST QUALITY, WORKMANSHIP MANNER IN ACCORDANCE WITH THE INDUSTRY STANDARD FOR CONSTRUCTION, FABRICATION, AND INSTALLATION FOR EACH TRADE, UNLESS OTHERWISE NOTED, USE ONLY NEW HIGHEST QUALITY MATERIALS CONSISTENT WITH SPECIFICATION'S INDICATED. CONTRACTOR SHALL COMPLY WITH LATEST EDITION OF ALL APPLICABLE BUILDING CODES AND GOVERNMENTAL REGULATIONS, INCLUDING THOSE DEALING WITH ANSI, T&S AND ADA REQUIREMENTS.

G7.2 WORK SHALL INCLUDE ALL LABOR, ASSEMBLIES, AND FINISH WORK WITH ALL PARTS AND MATERIALS NECESSARY TO MAKE A COMPLETE, IN-PLACE, PROPERLY WORKING, AND FINISHED INSTALLATION REGARDLESS OF EITHER SHOWN ON DRAWING OR NOT.

G8 SUBMITTALS

G8.1 THE GENERAL CONTRACTOR SHALL SUBMIT SHOP DRAWINGS FOR ALL FABRICATED ITEMS INCLUDING MECHANICAL AND ELECTRICAL EQUIPMENT, CUT SHEETS FOR ALL FIXTURES AND EQUIPMENT, AND SAMPLES OF ALL FINISHES TO INTERIOR DESIGNER FOR REVIEW PRIOR TO TIMELY ORDERING.

G8.2 THE CONTRACTOR SHALL PERFORM NO PORTION OF THE WORK REQUIRING SUBMITTAL AND REVIEW OF SHOP DRAWINGS, PRODUCT DATA, SAMPLES, OR SIMILAR SUBMITTALS UNTIL THE RESPECTIVE SUBMITTAL HAS BEEN PREVIEWED BY THE DESIGNER. SUCH WORK SHALL BE IN ACCORDANCE WITH ACCEPTED SUBMITTALS.

G8.3 THE CONTRACTOR SHALL NOT BE RELIEVED OF RESPONSIBILITY FOR DEVIATIONS FROM REQUIREMENTS OF THE CONTRACT DOCUMENTS BY THE DESIGNER'S REVIEW OF SHOP DRAWINGS, PRODUCT DATA, SAMPLES OR SIMILAR SUBMITTALS UNLESS THE CONTRACTOR HAS SPECIFICALLY INFORMED THE DESIGNER IN WRITING OF SUCH DEVIATION AT THE TIME OF SUBMITTAL AND THE DESIGNER HAS GIVEN WRITTEN ACCEPTANCE TO THE SPECIFIC DEVIATION. THE CONTRACTOR SHALL NOT BE RELIEVED OF RESPONSIBILITY FOR ERRORS OR OMISSIONS IN SHOP DRAWINGS, PRODUCT DATA, SAMPLES, OR SIMILAR SUBMITTALS BY THE DESIGNER'S ACCEPTANCE THEREOF.

G8.4 THE DESIGNER WILL REVIEW OR TAKE OTHER APPROPRIATE ACTION UPON THE CONTRACTOR'S SUBMITTALS SUCH AS SHOP DRAWINGS, PRODUCT DATA AND SAMPLES, BUT ONLY FOR THE LIMITED PURPOSE OF CHECKING FOR CONFORMANCE WITH INFORMATION GIVEN AND THE DESIGN CONCEPT EXPRESSED IN THE CONTRACT DOCUMENTS. THE DESIGNER'S ACTION WILL BE TAKEN WITH SUCH REASONABLE PROMPTNESS AS TO CAUSE NO DELAY IN THE WORK OR IN THE ACTIVITIES OF THE OWNER, CONTRACTOR OR SEPARATE CONTRACTORS, WHILE ALLOWING SUFFICIENT TIME IN THE DESIGNER'S PROFESSIONAL JUDGMENTS TO PERMIT ADEQUATE REVIEW. REVIEW OF SUCH SUBMITTALS IS NOT CONDUCTED FOR THE PURPOSE OF DETERMINING THE ACCURACY AND COMPLETENESS OF OTHER DETAILS SUCH AS DIMENSIONS AND QUANTITIES, OR FOR SUBSTANTIATING SYSTEMS, ALL OF WHICH REMAIN THE RESPONSIBILITY OF THE CONTRACTOR AS REQUIRED BY THE CONTRACT DOCUMENTS. THE DESIGNER'S REVIEW SHALL NOT CONSTITUTE APPROVAL OF SAFETY PRECAUTIONS OR, UNLESS OTHERWISE SPECIFICALLY STATED BY THE DESIGNER, OF ANY CONSTRUCTION MEANS, METHODS, TECHNIQUES, SEQUENCES OR PROCEDURES. THE DESIGNER'S ACCEPTANCE OF A SPECIFIC ITEM SHALL NOT INDICATE APPROVAL OF AN ASSEMBLY OF WHICH THE ITEM IS A COMPONENT.

G8.5 THE GENERAL CONTRACTOR SHALL INFORM THE DESIGNER IN WRITING AT THE TIME OF SUBMISSION OF ANY PROPOSED DEVIATION IN SUBMITTALS FROM THE REQUIREMENTS OF THE CONTRACT DOCUMENTS. BY APPROVING AND SUBMITTING SHOP DRAWINGS AND SAMPLES TO THE DESIGNER, THE CONTRACTOR REPRESENTS THAT HE HAS DETERMINED AND VERIFIED: FIELD MEASUREMENTS, FIELD CONSTRUCTION CRITERIA, MATERIAL, CATALOGUE NUMBERS AND SIMILAR DATA; AND, THAT EACH SUBMITTAL HAS BEEN CHECKED AND COORDINATED WITH THE REQUIREMENTS OF THE CONTRACT.

G8.6 THE CONTRACTOR SHALL REVIEW AND STAMP WITH HIS APPROVAL ALL SUBMITTALS. ANY SUBMITTALS WHICH DO NOT BEAR CONTRACTOR'S APPROVAL STAMP SHALL BE RETURNED WITHOUT REVIEW. WHERE PRINTED MATERIAL DESCRIBE MORE THAN ONE PRODUCT OR MODEL, CLEARLY IDENTIFY WHICH IS TO BE FURNISHED. SHOP DRAWINGS SHALL NOT BE REPRODUCTIONS OF CONSTRUCTION DOCUMENTS. EACH SHOP DRAWINGS, SAMPLE AND PRODUCT DATA SUBMITTALS SHALL BE PROPERLY IDENTIFIED BEARING THE NAME AND QUALITY OF THE MATERIAL, THE MANUFACTURER'S NAME, THE CONTRACTOR'S NAME, THE SUBCONTRACTOR'S NAME, THE NAME OF THE PROJECT AND THE DATE OF SUBMISSION.

G8.7 REJECTED SHOP DRAWINGS AND SAMPLES SHALL BE RESUBMITTED AS SOON AS POSSIBLE AND SHALL BE IDENTIFIED AS "RESUBMITTALS".

G8.8 THE CONTRACTOR SHALL DIRECT SPECIFIC ATTENTION, IN WRITING, ON RESUBMITTED SHOP DRAWINGS, PRODUCT DATA OR SAMPLES, TO REVISIONS, OTHER THAN THOSE REQUESTED BY THE DESIGNER.

G8.9 THE CONTRACTOR SHALL SUBMIT THE NUMBER OF COPIES OF PRODUCT DATA, MANUFACTURER'S INSTRUCTIONS, SHOP DRAWINGS, ETC. REQUIRED BY THE CONTRACTOR, PLUS 1 COPY WHICH WILL BE RETAINED BY THE DESIGNER.

G9 CLARIFICATIONS

G9.1 ALL REQUESTS FOR ANY CLARIFICATION OF THE CONSTRUCTION DRAWINGS SHALL BE DIRECTED TO THE DESIGNER. ALL REVIEWS SHALL BE ISSUED THROUGH THE DESIGNER IN THE FORM OF CLARIFICATION DRAWINGS AND/OR WRITTEN CORRESPONDENCE.

G10 RECORD DRAWINGS

G10.1 THE CONTRACTOR SHALL KEEP A DAILY RECORD DRAWING OF THE ONGOING HVAC, ELECTRICAL, AND ARCHITECTURAL WORK, AND SHALL KEEP THESE RECORDS AVAILABLE AT ALL TIMES. CONTRACTOR SHALL SUBMIT SUCH RECORD DRAWINGS TO THE DESIGNER AND THE OWNER AT THE COMPLETION OF THE WORK. DRAWINGS SHALL GIVE ACCURATE DIMENSIONS OF ALL WORK, INCLUDING UNDERGROUND OR OTHER CONCEALED WORK.

G10.2 ONE COPY OF ALL DRAWINGS ARE TO BE SUBMITTED TO THE OWNER BEFORE THE FINAL CERTIFICATE FOR PAYMENT IS ISSUED.

GENERAL NOTES CONTINUED ON A0.01

ARCHITECTURAL ABBREVIATIONS

AFF	ABOVE FINISH FLOOR	INT.	INTERIOR
ALT.	ALTERNATE	JT.	JOINT
ALUM.	ALUMINUM	L.P.	LOW POINT
A.B.	ANCHOR BOLT	MFR.	MANUFACTURER
A.D.	AREA DRAIN	MAS.	MASONRY
ARCH.	ARCHITECTURAL	M.O.	MASONRY OPENING
B.U.	BACK-UP ROD	MAX.	MAXIMUM
BM.	BEAM	M.E.P.	MECHANICAL/ELECTRICAL/PLUMBING
BLK.	BLOCKING	MECH.	MECHANICAL
BD.	BOARD	MFR.	MANUFACTURER
BOT.	BOTTOM	MIN.	MINIMUM
BLDG.	BUILDING	MTL.	METAL
B.U. ROOF	BUILT-UP ROOF	N.I.C.	NOT IN CONTRACT
CLG.	CEILING	N.T.S.	NOT TO SCALE
CEM.	CEMENT	O.C.	ON CENTER
C.I.P.	CAST IN PLACE	OPNG.	OPENING
C.L.	CENTER LINE	O.H.	OPPOSITE HAND
CER.	CERAMIC	O.D.	OUTSIDE DIAMETER/OVERFLOW DRAIN
C.T.	CERAMIC TILE	P.D.	PLANTER DRAIN
CLR.	CLEARANCE	PTD.	PAINTED
COL.	COLUMN	PL.	PLASTIC LAMINATE
CONC.	CONCRETE	P.L.	PROPERTY LINE
C.M.U.	CONCRETE MASONRY UNIT	PLUMB.	PLUMBING
CONST.	CONSTRUCTION	PLYWOOD	PLYWOOD
CONT.	CONTINUOUS	POL.	POLISHED
CONTR.	CONTRACTOR	RAD. R.	RADIUS
C.J.	CONTROL JOINT	RE.	REFER/REFERENCE
C.W.	CURTAIN WALL	RECEPT.	RECEPTACLE
DECOR.	DECORATIVE	REINF.	REINFORCING
DET.	DETAIL	REQ'D.	REQUIRED
DIA.	DIAMETER	R.	RISER
DR.	DOOR	R.D.	ROOF DRAIN
D.S.	DOWN SPOUT	RM.	ROOM
EACH	EACH	R.O.	ROUGH OPENING
E.W.	EACH WAY	SCHED.	SCHEDULE
ELEC.	ELECTRIC	SECT.	SECTION
E.W.C.	ELECTRIC WATER COOLER	SIM.	SIMILAR
EL.	ELEVATOR	SPEC.	SPECIFIED
ELEV.	ELEVATION	SQ.	SQUARE
EQ.	EQUAL	S.S.	STAINLESS STEEL
EQUIP.	EQUIPMENT	STD.	STANDARD
E.J.	EXPANSION JOINT	STL.	STEEL
EXT.	EXTERIOR	STN.	STONE
E.T.R.	EXISTING TO REMAIN	STRUCT.	STRUCTURAL
FIN.	FINISH	TBD	TO BE DETERMINED
F.D.C.	FIRE DEPARTMENT CONNECTION	THK.	THICK
F.E.C.	FIRE EXTINGUISHER CABINET	T.C.	TOP OF CURB
F.H.C.	FIRE HOSE CABINET	T.D.	TRENCH DRAIN
F.V.C.	FIRE VALVE CABINET	T.O.S.	TOP OF STEEL
FLASH.	FLASHING	T.O.W.	TOP OF WALL
FLR.	FLOOR	T.	TREAD
F.D.	FLOOR DRAIN	TYP.	TYPICAL
GALV.	GALVANIZED	U.N.O.	UNLESS NOTED OTHERWISE
G.I.	GALVANIZED IRON	VERT.	VERTICAL
GA.	GAUGE	VEST.	VESTIBULE
GEN.	GENERAL	V.W.C.	VINYL WALL COVERING
GYP. BD.	GYP. BOARD	W.P.	WATERPROOFING
HARDBD.	HARDBOARD	W.W.M.	WELDED WIRE MESH
HT.	HEIGHT	W.F.	WIDE FLANGE
H.P.	HIGH POINT	W/	WITH
H.M.	HOLLOW METAL	W/O	WITHOUT
HOR.	HORIZONTAL	WD.	WOOD
HR.	HOUR	W.W.F.	WELDED WIRE FABRIC
INSUL.	INSULATION		



SPECIFICATIONS CONT.

7. Sand edges that have been cut.  
8. Fit gypsum board snugly into steel door frames and spot grout at jamb anchors. Cut gypsum board neatly to fit around all outlets and switch boxes.
- C. INSTALLATION  
1. Install members true to lines and levels to provide surface flatness with maximum variation of 1/8 inch in 10 feet (1/960) in any direction, as determined by a 10 foot straightedge placed anywhere on the gypsum board in any direction.  
2. Apply gypsum board to ceilings and soffits before applying to vertical surfaces. Install wallboard to ceilings with long edge perpendicular to supports using longest pieces practicable. Stagger end joints and provide support for all edges.  
3. Install gypsum board to walls with long edge parallel to supporting members, using full length sheets. Do not install gypsum board panels horizontally, with long edges perpendicular to studs. Requests to install gypsum board panels horizontally will be rejected because gypsum board panels ends are not beveled, as are side edges, to facilitate taping and bedding of joints.  
4. Stagger joints on opposite sides of partition.  
5. Provide support for all edges and screw gypsum board to bottom runners.  
6. Butt joints loosely, maximum gap 1/8".  
7. Sand edges that have been cut.  
8. Fit gypsum board snugly into steel door frames and spot grout at jamb anchors. Cut gypsum board neatly to fit around all outlets and switch boxes.

- D. ATTACHMENT  
1. Attach gypsum board to metal supports with self drilling screws, using an electric screw driving gun and Phillips bit.  
2. Drive screws to slightly dimple surface but not to break paper.  
3. Space screws as recommended by GA-216 for non-fire rated partitions and ceilings.  
4. Start field screwing near center and work towards edges.  
5. Space screws not less than 3/8" from gypsum board edges.  
6. Space screws for fire rated partitions as required by fire test.  
7. Do not attach gypsum board to top runner where partition extends to structure unless required by fire test.

- E. MULTI-PLY CONSTRUCTION  
1. Apply base and face layer in multi-ply construction vertical with screws per manufacturer's recommendations.  
2. Offset face layer joints so they do not fall over base layer joints.

- F. MOISTURE RESISTANT GYPSUM BOARD:  
1. Use moisture resistant type gypsum board on all walls scheduled to receive ceramic tile, all toilet room walls and all walls with a lavatory.  
2. Install with long edge perpendicular to supports with end joints staggered.  
3. Do not install moisture resistant type gypsum board on ceilings, because it will sag, due to its inner core construction, which lacks sufficient tensile strength for horizontal ceiling installation.

- G. TRIM  
1. Metal Edging:  
a. Install metal edge along top edge of all board at ceiling and wherever gypsum board edge is exposed.  
b. Install metal edging where gypsum board abuts any structural element or dissimilar material. Make joint 1/8" wide and fill with acoustical sealant.  
2. Control Joints:  
a. Locate control joints as indicated but not to exceed 50'-0" in either direction for ceilings and not to exceed 30'-0" on center for partitions.  
b. Locate control joints where gypsum board abuts any dissimilar wall or ceiling assembly and where gypsum board construction changes within the same plane.  
c. Install control joint casing where control joint occurs in continuous wall surface.  
d. Make joint 1/4" wide with supports noncontinuous over joint.  
3. Install corner bead at all exterior corners.  
4. Acoustical Joint Sealant: Apply acoustical joint sealant at joint at perimeter of gypsum board at floor and ceiling, in accordance with ASTM C 919.  
5. Neoprene Fillers: Install neoprene fillers where stud walls abut vertical mullions of glass wall.

SECTION 09511 - ACOUSTICAL CEILING LAY-IN PANELS

- A. SAMPLES: Submit 12" x 12" samples of each type acoustical unit specified.
- B. SHOP DRAWINGS: Show complete pattern layout, setting diagrams and arrangement of acoustical units. Show erection details and location of all openings in system.
- C. MAINTENANCE: Furnish to Owner 2% extra of each type panel specified, for future use or replacement.
- D. PRODUCT: Manufacturer, style and color as indicated in the Finish Schedule.

SECTION 09531 - SOUND ATTENUATION BLANKETS

- A. MATERIALS: Sound Attenuation Blanket: 2" thick unless otherwise indicated. Rated noncombustible when tested per ASTM E 136.
- B. INSTALLATION  
1. Above Ceilings: Install insulation with all joints butted tightly. Extend 4" beyond each side of sound attenuated walls. Completely cover entire surface with blankets free from wrinkles, sags, tears, ripples, etc. Lay balls flat in the ceiling without being compressed. Place snug against each other so as to leave no space between balls.  
2. Within Partition Walls: Install insulation to inside face of first side of partition with staples or mastic. Anchor ball in each corner and in center. Fit joints snugly against adjoining balls and framing members.

- C. LOCATIONS:  
1. Within walls, where indicated on the drawings.  
2. Above ceilings at sound attenuated walls and other locations as indicated on plans.

SECTION 09661 - VINYL COMPOSITION FLOOR TILE

- A. SAMPLES: Submit manufacturer's full line of samples of Vinyl Composition Tile.
- B. SHOP DRAWINGS: Submit shop drawings showing special tile patterns, if applicable.
- C. MAINTENANCE: Furnish to the Owner two copies of printed maintenance instructions of the tile manufacturer for replacement, cleaning and buffing for each type of resilient tile installed.
- D. ADDITIONAL TILE: Furnish to Owner one carton of replacement vinyl composition tile for each color and/or pattern installed.

- E. MATERIALS: As indicated in the Finish Schedule  
1. Adhesives: As recommended by the tile manufacturer for the type of tile and installation used. Use waterproof adhesive.  
2. Underlayment for Leveling Subfloor: Armstrong Latex Underlayment S-180. Fill cracks and irregularities in concrete subfloor with underlayment. Apply 1/8" thick maximum per coat in accordance with manufacturer's written directions. Allow 24 hours between coats using several coats to build up required thickness.

- F. INSTALLATION:  
1. Layout work square with room size with no border tile less than half tile width. Fit borders neatly into breaks and recesses, against bases and around pipes. Cut, fit and scribe borders to walls after application of field tile.  
2. Lay resilient flooring true, level and even; with light, aligned joints. Cut all resilient flooring around all permanent cabinets and fixtures. Install edging materials where floor tile materials terminate at points higher than continuous finish flooring.

SECTION 0978 - RESILIENT BASE

- A. SAMPLES: Submit 6" length of base, each type and each color selected.
- B. MATERIALS:  
1. Resilient Cove Base: As indicated in the Finish Schedule.  
2. Adhesives: As recommended by the base manufacturer. Use waterproof adhesive.
- C. BASE INSTALLATION:  
1. Adhere base to wall and built-in cabinet work using adhesive and method recommended by manufacturer.  
2. Install base tight to wall and floor in straight line.  
3. Install preformed internal and external corners neatly and accurately for cove base.  
4. Scribe base accurately to door frames.

SPECIFICATIONS CONT.

SECTION 09688 - CARPETING GLUE DOWN

- A. SAMPLES: Furnish 18" x 18" sample of each type carpet specified and full color range available. Furnish 6" long sample of each accessory and full color range available.
- B. SHOP DRAWINGS: Furnish plan for each area to receive carpet showing locations of all seams and accessories. Furnish complete written specifications for each carpet specified.
- C. OPERATION AND MAINTENANCE DATA: Furnish to Owner, two (2) copies of maintenance manual written by carpet manufacturer's Technical Service Department for each type of carpet installed.
- D. ADDITIONAL MATERIAL: Furnish to the Owner for use as future replacement Carpet, one per cent (1%) of each color of each type carpet installed. Furnish uncut rolls. Scrap pieces and remnants will not be allowed.
- E. PRODUCT: As Indicated in the Finish Schedule
- F. WORKMANSHIP:  
1. The carpet manufacturer's recommended procedures for installation shall be closely followed. Pay particular attention to recommendations for application of floor covering adhesive, seam cement, and cross joinings.  
2. Carpet edgings shall be neatly trimmed for tight fit along walls cut and fit evenly around all projections and into trim strips. Fit closely and evenly to, in, and through doorways terminating carpet under doors. Finished installation shall be smooth and free of ripples, puckers and loose seams.  
3. Furnish Carpet binder bar and/or vinyl reducing strip and install at doorways and other areas adjoining hard surface materials which are below carpet height. Lay all carpet in the same direction unless specifically shown otherwise.  
4. Lay carpet with a minimum of seams, particularly in traffic lanes. Do not use small carpet strips. All cross seams necessary due to layout of areas shall be at the absolute minimum and shall be indicated on shop drawings.  
5. Locate cross seams necessary due to length of rolls to avoid occurrence at conspicuous locations, near doors or at pivot points. Approval must be obtained prior to seaming.

- G. INSTALLATION WITH ADHESIVE:  
1. Concrete surfaces shall be dry, clean and aged a minimum of 40 days. Seal surfaces with sealer compatible with adhesive and recommended by adhesive manufacturer. Dampmap area prior to application.  
2. Cut two pieces of carpet to length, plus trim and lay in place. Snap a chalk line to mark seam location. Turn each piece back approximately 3 feet from seam and spread adhesive uniformly for 2 ft. each side of chalk line.  
3. Unroll 1 piece of carpet into adhesive. Roll out air bubbles toward seam. Unroll second piece toward seam and work cut edge into adhesive to pick up sufficient adhesive to "butter" seam. Roll out air bubbles in second piece toward seam.  
4. Roll up uncemented portion of first piece toward seam, apply adhesive and unroll carpet into adhesive. Roll out air bubbles away from seam. Do likewise with second piece but omit adhesive for 2 ft. from uncemented edge where next seam will occur. Cut off excess carpet.  
5. Cut next length of carpet and lay in place. Repeat installation procedure. Cross seams shall be loosely back sewn, and the joined pieces treated as one.

SECTION 09900 - PAINTING

- A. DETAILED PAINTING SCHEDULE: Furnish a "Detailed Painting Schedule" for approval by the designer. Indicate type of surface, type of paint material, and number of coats required, as set forth in the "Painting Requirements" hereinafter specified. Submit approval of the "Detailed Painting Schedule" before delivering material to the Job Site. The designer will check the "Detailed Painting Schedule" and if any painting material listed therein does not represent, in the opinion of the designer, such highest quality of the manufacturer, the designer may direct its replacement with an acceptable painting material at no additional cost to the Owner.

- B. SAMPLES & MIXING:  
1. Paint colors shall be as selected by the designer. Before any work is begun, the designer will furnish the Painting Contractor with a color schedule and/or chips showing where the various colors shall be used.  
2. Tint prime coats and undercoats approximately to the shade of the final coat, but each with a slight variation in color to distinguish them from the preceding coat.  
3. Apply paint of consistency recommended by manufacturer. Additional thinning permitted only with specific approval.  
4. Use factory mixed colors, shades, and tints with finish paints matching the approved color samples. Job mixing permitted only with specific approval.

- C. PAINT APPLICATION:  
1. Apply paint in exact accordance with manufacturer's latest published specification requirements, and instructions.  
2. Thoroughly mix paint before application and frequently stir during application so as to maintain pigment satisfactorily in suspension.  
3. Do not thin paint in excess of the printed directions of the manufacturer.  
4. Do not allow caking or setting of pigment into a hard mass.  
5. Apply paint uniformly without visible laps, sags, curtains, holidays or objectionable brush marks.  
6. Insure that all primer and intermediate coats of paint are unscarred and completely integral at the time of application of each succeeding coat.  
7. Allow sufficient time between coats to ensure proper drying.  
8. Sand between all coats on wood and metal surfaces prior to the application of succeeding coats.  
9. Match final coat of paint in color, tint and hue with the color displays approved by the designer.  
10. Paint ceilings or walls behind open cabinets or shelves. Painting walls behind permanently built-in cabinets with closed doors will not be required.  
11. Paint factory-finished access panels, registers, grilles, diffusers, electrical panel boxes, convactor covers and similar items

SECTION 10445 - SIGNAGE AND GRAPHICS

- Interior Signage at all restrooms will be furnished and installed by the General Contractor.  
Interior Signage at all rooms requiring signage to receive Certificate of Occupancy will be furnished and installed by the General Contractor.  
The Contractor shall coordinate installation date for Certificate of Occupancy or other inspections requiring signage. All signage to be mounted in compliance with ADA and T&S standards.  
Refer to Sheet A0.04 for typical mounting heights.

SECTION 10522 - FIRE EXTINGUISHERS, CABINETS AND ACCESSORIES

- A. MATERIALS:  
1. Fire Extinguisher: Larsen's Manufacturing Co. MP Series S, UL 2A-10B/C (A, B, C fire class).  
2. Fire Extinguisher Brackets: Larsen's Manufacturing Co. #821 Fire Extinguisher Bracket.  
3. Semi-Recessed Fire Extinguisher Cabinets: Larsen's Manufacturing Co. Architectural Series, Solid S.S. Door w/ Black Type A Die Cut Lettering.

SECTION 10800 - TOILET AND BATH ACCESSORIES

- A. PRODUCT DATA: Submit manufacturer's specifications to evidence compliance with these specifications. Manufacturer's Product Data shall be clearly and specifically marked to indicate the specific models or types intended for submittals and desired approval.
- B. MATERIALS: (Bobbick Model Numbers except where otherwise indicated).  
1. Framed Mirror: B-2908 (18" x 36")  
2. Surface Mounted Double Robe Hook: B-76727  
3. Sanitary Napkin Disposal - Wall Mount Type: B-4353  
4. Surface Mounted Double Roll Toilet Paper Dispenser: B-69997  
5. Surface Mounted Soap Dispenser: B18615  
6. Recessed Paper Towel Dispenser and Waste Receptacle: B-4369  
7. Koala Bear Changing Station: KB200-XX, Cream(00), Grey(01), White Granite(05), Earth(11); verify color with designer prior to ordering  
8. Recessed Specimen Pass Through Cabinet: B-505  
9. Grab Bar: B-6806 - 36"  
10. Grab Bar: B-6806 - 42"  
11. Surface Mounted Paper Towel Dispenser: B-2621  
12. Recessed Paper Towel Dispenser: B-35903

- C. SCHEDULE OF ACCESSORIES ITEMS TYPICAL LOCATIONS: as indicated on floor plan.

SPECIFICATIONS CONT.

SECTION 09600 - STONE TILE FLOORING

PART 1 - GENERAL

- 1.01 SUMMARY  
A. Related Documents: Conditions of the Contract, Division 1 - General Requirements, and Drawings apply to Work of this Section.  
B. Section Includes:  
1. Fabrication and installation of stone flooring.  
2. Accessories as necessary to complete Work.
- 1.02 SYSTEM REQUIREMENTS  
A. Design Requirements  
1. Requirements shown by details are intended to establish basic dimensions of units, sight lines and profiles of members.  
2. Ensure sufficient quantity of acceptable stone is available of entire Work and that stone can be fabricated to meet Project delivery schedules without delays.  
3. Color match stone to produce uniform appearance acceptable to Designer after installation.  
B. Interface with Adjacent Systems: Review installation procedures and coordinate with other work.

- 1.03 SUBMITTALS  
A. General: Submit in accordance with A0.00/G4.  
B. Product Data: Submit product data for:  
1. Stone materials  
2. Mortar and grout mix designs.  
3. Latex additives for grout and mortar.  
4. Sealants.  
5. Stone cleaners.  
C. Samples:  
1. Grout: Submit samples mounted in 6 inch long metal channels in manufacturer's full range of standard colors for Designer's selection.  
2. Sealant: Submit samples 6 inches long in manufacturer's full range of standard colors for Designer's selection.  
D. Closeout Submittals:  
1. Submit under provisions of Section 01780.  
2. Maintenance data for cleaning and stain removal methods, and cleaning and impregnator materials.  
3. Warranty: Submit specified warranty.

- 1.04 QUALITY ASSURANCE  
A. Installer Qualifications: Companies specializing in stone work having minimum of 5 years successful experience with work comparable to that indicated and specified.  
B. Certifications:  
1. Submit manufacturer's certifications stating that mortars and grouts are suitable for intended use.

- 1.05 PRE-INSTALLATION CONFERENCE  
A. Conduct pre-installation conference in accordance with A0.00/G2.  
B. Require attendance of stone installer and installers of related work. Review installation procedures and coordination required with related work.

- 1.06 DELIVERY, STORAGE, AND HANDLING  
A. Comply with requirements of A0.01/G11 and A0.01/G15.  
B. Deliver stone and bulk materials using protection and handling equipment which will ensure that there will be no breakage, chipping, or soiling.  
C. Store stone vertically on clean blocking, free of ground, covered and protected from weather, soiling, and damage. Allow air circulation to prevent condensation.  
D. Maintain strict compliance with the recommendations of fabricator and MIA.  
E. Stone that is broken, chipped, cracked, stained or otherwise damaged will not be accepted.  
F. Protection:  
1. Protect mortar and grout materials against moisture, soiling, staining, and physical damage.  
2. Protect adjoining work surfaces before stone work begins.  
3. Observe precautions of products and equipment manufacturers regarding safe handling, open-flame and ventilation.

- 1.07 PROJECT CONDITIONS  
A. Verify dimensions of supporting structure and adjacent work at Project site by accurate field measurement prior to preparation of shop drawings.

- 1.08 WARRANTY  
A. Comply with provisions of A0.01/G20.  
B. Submit 3 year warranty stating labor and materials are in conformance with Specification requirements and to repair defects and work affected in connection with defects which develop within warranty period immediately after written notice is received.  
C. Defects include, but are not limited to, spalling, loose stone, faulty sealant, cracking, spitting, deformation, improper setting (hollow sound when tapped with metal rod), and improper materials or workmanship.  
D. Remedy includes labor, materials, equipment and services necessary to repair defect including removing and replacing superimposed work.

- 1.09 EXTRA STOCK MATERIALS  
A. Comply with provisions of A0.00/G4.  
B. Furnish 3% each size and shape of stone by no less than 5 pieces of each size and shape.

PART 2 - PRODUCTS

- 2.01 PRODUCTS AND MANUFACTURERS  
A. Acceptable latex seeling material and group manufacturers. Provide list to designer for approval.

- 2.02 MATERIALS  
A. Stone tile: refer to Finish Schedule.  
B. Dryset with polymer additive mortar:  
1. Description: Two component system, factory prepared second generation high bond strength dryset mortar and liquid polymer additive; complying with ANSI A118.4.  
2. Acceptable products: submit to designer for approval  
C. Grout:  
1. Latex modified, factory blended, sanded grout, consisting of Portland Cement, graded quartz and additives.  
2. Colors: Selected by designer from manufacturer's full range of colors.  
3. Acceptable products: submit to designer for approval.  
D. Primers and bond coats: as recommended by manufacturer of mortar and grout materials.  
E. Crack isolation membrane:  
1. Composite sheet of CPE (chlorinated polyethylene-elastomeric sheet) laminated on both sides to non-woven spun-bond polyester specifically designed for use in this set flooring.  
2. Acceptable products: submit to designer for approval.  
F. Sealant: refer to Section 07900-Sealants and Caulking  
G. Cleaner:  
1. Provide stone cleaner of proper formulation for stone finishes and applications indicated as recommended by stone manufacturer and by impregnator manufacturer.  
2. Do not use acid type cleaning agents or other cleaning compounds containing caustic or harsh fillers, except where expressly approved by stone manufacturer for type of condition involved.  
H. Impregnator:  
1. 96-100 percent breathable silicone materials formulated for protection of natural stone.  
2. Penetrates, impregnates and chemically bonds to stone pores to harden surface without change to natural stone appearance.  
3. UV resistant and non yellowing.  
4. Material and primer as recommended by impregnator manufacturer and by stone producer for application indicated.  
5. Static coefficient of friction: 0.60 minimum, ASTM C1028.  
6. Acceptable products: submit to designer for approval.

- 2.03 MIXING OF MORTAR AND GROUT  
A. Machine mixing  
1. Use rotating blade type mortar and grout mixer.  
2. Mix only long enough to wet out batch.  
3. Do not overmix.  
4. Stop mixer and dump mortar and grout from mixer promptly.

SPECIFICATIONS CONT.

- B. Hand mixing  
1. Premix dry ingredients  
2. Place liquid in clean container or mixing box, add dry material and mix.  
3. Adjust amount of liquid or dry material to obtain proper consistency.
- 2.04 STONE FABRICATION  
A. Provide stone which is free from starts, cracks, or seams which might impair its structural integrity or its appearance.  
B. Fabricate stone in accordance with final shop drawings.  
C. Cut joints full and square, straight, sharp and true for full thickness of stone with various shapes as detailed.  
D. Cut and drill stones with rotary drill. Impact drill not allowed. Cut and drill stones in shop as necessary for openings or equipment or other integral materials.  
E. Fabrication Tolerances:  
1. Thickness: +/-1/6 inch after finishing.  
2. Cutting: +/-1/16 inch in 8'-0"  
F. If acceptable pattern or grain direction is apparent due to natural appearance of stone or finishing, arrange units so that pattern or grain is in one direction throughout installation. Identify rift directional on concealed surface of each unit. Cut panels parallel (perpendicular) to rift to match Designer's samples.  
G. Dress joints straight and at 90 degree angle with face.  
H. Patching or other forms of concealment to cover defects in material or workmanship will not be permitted.

PART 3 - EXECUTION

- A. Examine conditions and proceed with Work in accordance with G2/A0.00.  
B. Ensure that surfaces to receive stone are firm, dry, clean, and free of oily or greasy films, mortar, soil, other foreign substances, and VCI and carpet adhesive.  
C. If necessary, bead blast floor to remove all traces of adhesive, soiling, and other contaminants. Consult with Owner and stone supplier prior to setting tile.  
D. Beginning of installation is recognition that existing substrates are acceptable.

- 3.02 PREPARATION  
A. Wet down or wash subfloor surfaces to remove dirt, dust, debris and loose particles immediately prior to setting stone.  
B. Clean stone before setting by scrubbing with fiber brushes following by thorough drenching with clean water. Use only mild cleaning compounds that contain no caustic or harsh fillers or abrasives.  
C. Clean and prime exposed edges of each panel per sealant manufacturer's recommendations before setting stones.  
D. Crack Isolation Membrane:  
1. Install crack isolation membrane at control joints, construction joints, and all cracks in concrete substrate, in strict compliance with manufacturer's instructions and details.  
2. Set membrane in latex modified Portland cement bond coat.  
3. Cover with membrane before bond coat skins over.  
4. Embed membrane into bond coat with rubber roller or linoleum roller. Work from center toward membrane edges.  
5. 100 percent coverage of substrate and full penetration of bond coat into fabric is required.

- 3.03 INSTALLATION  
A. Install stone in accordance with final shop drawings. Comply with requirements of MIZ and latex additive manufacturer.  
B. Tolerances:  
1. Variation from level: +/-1/8 inch in 10'-0", non-cumulative.  
2. Stone edge to edge alignments: +/-1/32 inch at any location.  
3. Face width of joints: +/-1/32 inch at any location.  
C. Do not install units which are shipped, cracked, discolored or not properly finished.  
D. Blend individual stone pieces so homogeneous appearance is achieved.  
E. Install stone with joints accurately aligned. Provide uniform joint width of 1/8 inch.  
F. Set stone in pattern indicated with uniform joints matching filed sample.  
G. Thin Bed Method:  
1. Apply thin and medium bed material with notched trowel to work material into good contact with surface to be covered.  
2. Apply only as much mortar as can be covered within 20 to 30 minutes.  
3. Apply skim coat of mortar to back of each stone immediately prior to placing on bed.  
4. Finish grout flush with finished surface of stone.  
5. Strike joints flush and tool slightly concave.  
6. Fill gaps and skips to produce finished joint which is uniform in color, smooth and without voids, pinholes or low spots.  
7. Cure grout by maintaining in moist condition for 72 hours minimum.  
8. Do not permit traffic on stone during setting of units or for at least 24 hours after final grouting of joints.  
I. Control Joints  
1. Provide control joints where stone abuts restraining surfaces such as perimeter walls, columns, wall corners, raised concrete platforms, and conforming to architectural details.  
2. Space control joints in horizontal plane 20'-0" OC maximum (more frequently if directed by mortar setting or stone supplier) in each direction.  
3. Provide sealant and related materials installed in accordance with requirements specified in Section 07920.

- 3.04 ADJUSTING  
A. Clean excess mortar from surface with water as work progresses. Perform cleaning damaged or those which do not match adjoining stonework.  
B. Provide neat matching units installed as specified and in manner to eliminate evidence of replacement.  
C. Repoint of grout defective and unsatisfactory joints as necessary to provide neat uniform appearance.

- 3.05 CLEANING  
A. Clean excess mortar from surface with water as work progresses. Perform cleaning while mortar is fresh and before hardening on surfaces.  
B. Remove grout haze following recommendation of mortar additive manufacturer.  
C. Remove concrete and alkali wash-offs on surfaces as work progresses.  
D. Remove excess sealant by moderate use of mineral spirits or other solvent acceptable by sealant manufacturer and stone fabricator.  
E. Clean stone after setting, pointing, grouting and curing is complete. Use procedures recommended by stone producer for types of application indicated.  
F. Use of wire brushes, acid type cleaning agents or other cleaning compounds with caustic or harsh filler will not be permitted. Rinse with clean water.  
G. Clean and repair surfaces failed or otherwise damaged in connection with work of this Section. Pay cost of replacing finished or materials that cannot be satisfactorily cleaned or which have been damaged by improper cleaning materials and techniques.  
H. Apply impregnator in accordance with manufacturer's recommendations.

- 3.06 PROTECTION  
A. Protect finished work in accordance with Section 01500.  
B. After setting, keep traffic off flooring for 48 hours.  
C. Protect freshly filled joints from traffic dirt for 48 hours.  
D. Protect interior stone flooring during construction period with kraft paper or other heavy covering of type that will not stain or discolor stone.  
E. Before final inspection, remove protective covering and clean stone surfaces using procedures and materials recommended by impregnator manufacturer.

MEDSMITH

601 MAIN STREET  
SUITE 110  
KELLER, TX 76248



7.10.18

BID/PERMIT 7.10.18

SHEET TITLE:  
SPECIFICATIONS  
(CONT.)

SHEET NO.:

A0.02

NOTE: FLUSH VALVE TO BE BELOW GRAB BAR WHERE GRAB BAR IS SCHEDULED. CONTROLS FOR FLUSH VALVES SHALL BE MOUNTED ON THE WIDE SIDE OF TOILET AREAS.

**WATER CLOSET**

44" MAX. TO FLUSH HANDLE

TOILET COMPARTMENT

17" MIN. TO FLUSH VALVE

19" MAX. TO FLUSH VALVE

1" MIN. TO FINISH FLOOR

**WALL MOUNTED LAVATORY**

MIRROR

3'-4" MIN. TO MIRROR

2'-10" MAX. TO RIM

1'-5" MIN. TO FINISH FLOOR

INSULATE ALL PIPING AT H.C.

**URINAL**

1'-0" MIN. TO FINISH FLOOR

1'-5" TO RIM AT ACCESSIBLE

**EWC**

9" MIN. TO FINISH FLOOR

3'-0" MAX. TO SHOOT AT ACCESSIBLE

**HAND HELD SHOWER/SHOWER HEAD**

MIN. 60" LONG HOSE

4'-0" MIN. TO FINISH FLOOR

6'-6" MIN. TO FINISH FLOOR

ACCESSORY TYPE	INSTALLATION REQUIREMENTS
PAPER TOWEL DISPENSER	4'-0" MAX. TO DISP. SLOT
MULTI-ROLL TOWEL TISSUE DISPENSER	7'-9" FRONT OF TOILET 1'-7" TO C.L. 1'-0" MIN. TO REINFORCED TOP EDGE
WASTE RECEPTACLE	3'-0" TO DISP. SLOT
COMBINATION PAPER TOWEL DISPENSER/WASTE RECEPTACLE	4'-0" MAX. TO DISP. SLOT
GRAB BAR	36" TO TOP
SANITARY NAPKIN/TAMPON (WOMEN'S ONLY)	4'-0" MAX. TO DISP. SLOT
TOILET-SEAT-COVER DISPENSER, SANITARY NAPKIN DISPOSAL & TOILET TISSUE DISPENSER (WOMEN'S ONLY)	8" MIN. TO C.L.
MULTI-PURPOSE UNIT	4'-0" MAX. TO DISP. SLOT
SOAP DISPENSER	3'-9"
TOILET SEAT COVER DISPENSER	4'-0" MAX. TO DISP. SLOT
SHOWER CURTAIN ROD/TRACK	6'-6"
SOAP DISH	3'-4"
FOLDING SHOWER SEAT	1'-1"
MOP & BROOM HOLDER	6'-0"
STAINLESS STEEL FRAMED MIRROR	7'-4" MIN. 4'-0" MAX. TO REFLECTIVE TO SURFACE 18"X36"
UNFRAMED MIRROR	3'-4" MAX. U.N.C.O. 3'-9" U.N.C.O.
TOWEL BAR	4'-0" MAX.
TOWEL PIN	4'-0" MAX.
ROBE HOOK	4'-0" MAX. AT ACCESSIBLE
SPECIMEN PASS-THRU	4'-0" MAX. AT ACCESSIBLE
SANITARY NAPKIN DISPOSAL (WOMEN'S ONLY)	3'-1" MAX.

FINISH FLOOR

NOTES:  
1. ACCESSORIES LISTED MAY HAVE GAPS IN ALPHABETICAL LISTING.  
2. ACCESSORIES CAN APPEAR ON FLOOR PLANS OR INTERIOR ELEVATIONS.

Diagram showing the placement of various fixtures relative to the finish floor. The fixtures and their heights are:

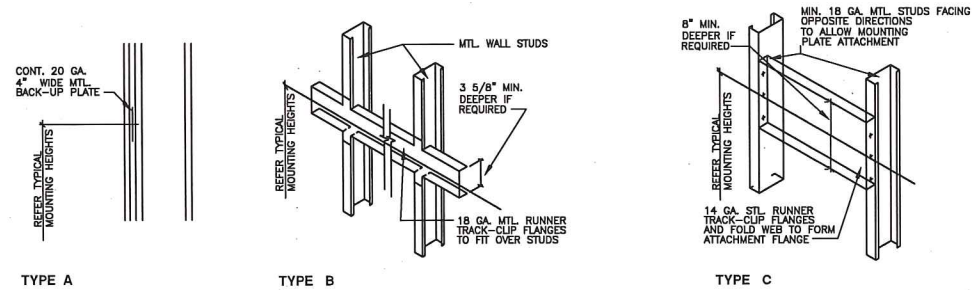
- MARKER BOARD/ CHALKBOARD: 3'-0"
- BUMPER RAIL OR BR: 3'-0"
- HANDRAIL OR HR: 3'-0"
- CORNER GUARD OR CG
- FIRE EXTINGUISHER & CABINET: 5'-0"
- COAT RACK AND SHELF: 4'-0" N.C.
- SURFACE MOUNTED PROJECTION SCREEN: 7'-2"
- LIGHT SWITCH AND CARD READER: 44"
- ELECTRICAL OUTLET: 18"
- SIGNAGE: 5'-0" TO CL OF SIGN

STRUCTURAL STRENGTH OF GRAB BARS, TUB AND SHOWER SEATS, FASTENERS AND MOUNTING DEVICES:

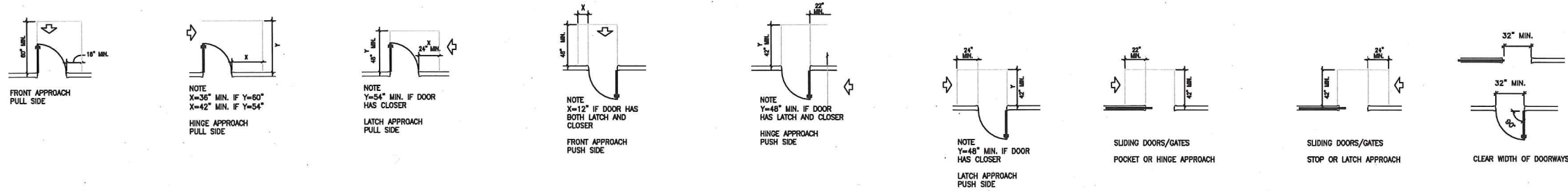
- (1) Bending stress in a grab bar or seat induced by the maximum bending moment from the application of 250 lbf (1112N) shall be less than the allowable stress for the material of the grab bar or seat.
- (2) Shear stress induced in a grab bar or seat by the application of 250 lbf (1112N) shall be less than the allowable shear stress for the material of the grab bar or seat. If the connection between the grab bar or seat and its mounting bracket or other support is considered to be fully restrained, then direct and torsional shear stresses shall be totaled for the combined shear stress, which shall not exceed the allowable shear stress.
- (3) Shear force induced in a fastener or mounting device from the application of 250 lbf (1112N) shall be less than the allowable lateral load of either the fastener or mounting device or the supporting structure, whichever is the smaller allowable load.
- (4) Tensile force induced in a fastener by a direct tension force of 250 lbf (1112N) plus the maximum moment from the application of 250 lbf (1112N) shall be less than the allowable withdrawal load between the fastener and the supporting structure.
- (5) Grab bars shall not rotate within their fittings.

## A0.03

ACCESSORY / EQUIPMENT MOUNTING DETAILS



DOOR CLEARANCES

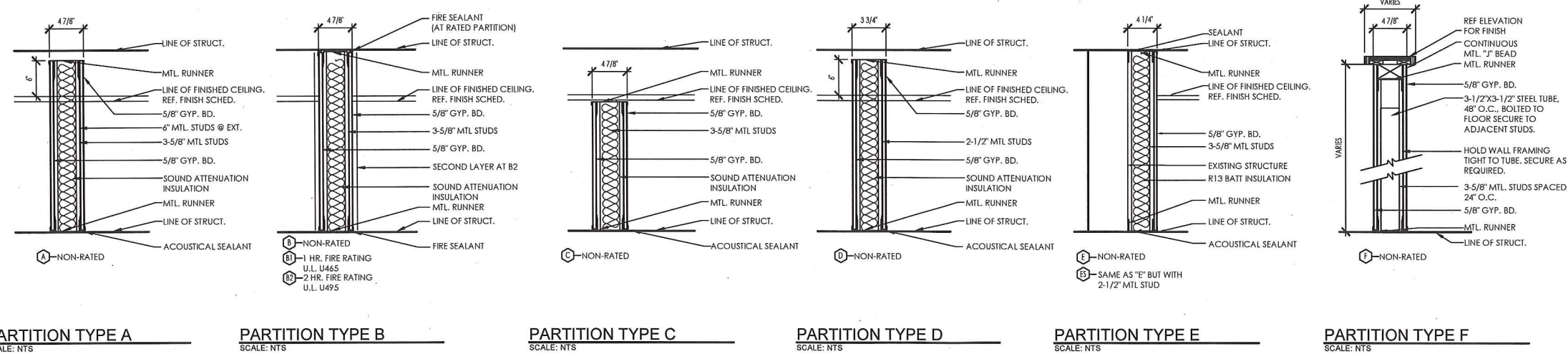


ADDITIONAL DOOR INFORMATION

**DOOR CLOSERS**  
If a door has a closer, then the sweep period of the closer shall be adjusted so that from an open position of 70 degrees, the door will take at least 3 seconds to move to a point 3 in (75 mm) from the latch, measured to the leading edge of the door.

**DOOR OPENING FORCE**  
The maximum force for pushing or pulling open a door shall be as follows:  
(1) Fire doors shall have the minimum opening force allowable by the appropriate administrative authority.  
(2) Other Doors.  
(a) exterior hinged doors: (Reserved).  
(b) interior hinged doors: 5 lbf (22.2N)  
(c) sliding or folding doors: 5 lbf (22.2N)  
These forces do not apply to the force required to retract latch bolts or disengage other devices that may hold the door in a closed position.

PARTITION TYPES



PARTITION NOTES

1. SEAL PARTITIONS BEHIND CONTROL JOINTS, BEHIND EXPANSION JOINTS, AT PERIMETERS, AT THE PERIMETER WALL, AT SEALANT AT BOTH SIDES OF PARTITIONS.
2. FIRE RESISTANT RATINGS ARE TO CONTINUE ABOVE ALL OPENINGS IN RATED PARTITIONS.
3. ALL REQUIRED FIRE RESISTIVE LAYERS OF GYPSUM BOARD AT FIRE RESISTANT PARTITION SHALL EXTEND TO THE INTERIOR FACE OF THE EXTERIOR SHEATHINGS.
4. O.C. AT CEILINGS AND NOT TO EXCEED 30'-0" O.C. FOR PARTITIONS.
5. THE LINE OF STRUCTURE AS INDICATED DOES NOT INDICATE EXACT FIELD DIMENSIONS.
6. SEALANT: FIRE RESISTANCE RATED PARTITIONS SHALL USE FIRESTOP SYSTEM. NON RATED PARTITIONS SHALL USE ACOUSTICAL SEALANT.
7. REFER TO SPECIFICATIONS SCHEDULE FOR STUD GAUGE, SPACING AND ALLOWABLE LIMITING HEIGHTS FOR GYPSUM BOARD ASSEMBLIES.

MEDSMITH

601 MAIN STREET  
SUITE 110  
KELLER, TX 76248

LINCOLN  
HARRIS  
6688 N. CENTRAL EXPRESSWAY  
SUITE 300  
DALLAS, TX 75206  
214-461-2300



7.10.18

BID/PERMIT 7.10.18

SHEET TITLE:  
TAS  
SPECIFICATIONS  
PARTITION  
TYPES

SHEET NO.:

A0.04

DEMO PLAN GENERAL NOTES:

1. COORDINATE DEMOLITION PLAN WITH ARCHITECTURAL PLAN INCLUDING ALL GENERAL NOTES, AND PLAN INFORMATION.

2. DEMOLITION IS NOT NECESSARILY LIMITED TO WHAT IS SHOWN, BUT IS TO INCLUDE WHAT IS NECESSARY TO COMPLETE THE WORK IN ACCORDANCE FULL SCOPE OF THESE DOCUMENTS.

3. FURNISH ALL LABOR, MATERIALS & EQUIPMENT TO COMPLETE DEMOLITION AND REMOVAL OF ALL ITEMS AS INDICATED.

4. CONTRACTOR SHALL KEEP ADJACENT AREAS FREE OF DUST AND DEBRIS.

5. UPON DISCOVERY OF CONCEALED OR UNANTICIPATED ITEMS (E.G. ASBESTOS, PLUMBING, DUCTWORK, ETC.) CONTACT THE ARCHITECT PRIOR TO REMOVAL OF SUCH ITEMS.

6. AT THE COMPLETION OF DEMOLITION WORK, THE CONSTRUCTION AREA(S) SHALL BE LEFT IN "BROOM CLEAN" CONDITION. ALL DEBRIS AND MISCELLANEOUS MATERIALS SHALL BE REMOVED.

7. PATCH AND REPAIR ANY DAMAGE CAUSED TO ADJACENT AREAS.

8. AN ACCESSIBLE PATH TO THE EXITS OR FIRE STAIRS SHALL BE MAINTAINED AT ALL TIMES.

9. FIRE RATED WALLS SHALL BE MAINTAINED AT ALL TIMES. IF DAMAGE OR DEMOLITION OF FIRE RATED WALLS OCCUR THEY SHALL BE PROMPTLY REPAIRED.

10. PROTECT EXISTING T-STATS DURING DEMOLITION.

11. NO EXISTING SMOKE DETECTOR, PUBLIC ADDRESS SPEAKER, FIRE ALARM BOX OR SIMILAR DEVICE INCLUDING THE ASSOCIATED WIRING SHALL BE DAMAGED DURING THE DEMOLITION OR SUBSEQUENT CONSTRUCTION. RELOCATION OF SMOKE DETECTORS, PUBLIC ADDRESS SPEAKERS AND FIRE ALARM EQUIPMENT SHALL BE ACCOMPLISHED AS A FIRST PRIORITY. NO ACTIVE SMOKE DETECTOR SHALL BE LEFT COVERED OR REMOVED.

12. ALL BROKEN, STAINED OR DAMAGED CEILING TILES SHALL BE DISCARDED.

13. REMOVAL OF ANY EQUIPMENT, CABLING, SWITCHES AND CONDUIT PERTAINING TO DATA, COMMUNICATIONS AND TELEPHONES SHALL BE VERIFIED WITH TENANT'S DATA COMMUNICATIONS REPRESENTATIVE AS REQUIRED TO PREVENT CONSTRUCTION DELAYS.

14. REMOVE ALL EXISTING IRREGULAR MATERIALS WHICH MIGHT CAUSE RISE IN FLOORING SURFACE, SUCH AS FASTENERS, OUTLETS, TRIM, FLASH PATCH, CONCRETE FILL, PLYWOOD, ETC., U.N.O.

15. CONTRACTOR TO ENSURE THAT ALL NAILS, SCREWS AND WALL MOUNTED ITEMS SHALL BE REMOVED FROM ALL EXISTING WALLS TO REMAIN AND PATCHED AND PREPARED FOR NEW SCHEDULED FINISHES, U.N.O. CONFIRM WITH TENANT PRIOR TO REMOVING ITEMS FROM WALLS.

16. ALL FLOOR FINISHES, WALL BASE AND VINYL WALLCOVERINGS SHALL BE REMOVED, U.N.O. REFERENCE FINISH PLAN FOR ADDITIONAL INFORMATION.

17. REMOVE WALLS AND ITEMS AS INDICATED ON THE PLAN.

18. DOORS SHALL BE SALVAGED AND CONSIDERED FOR REUSE, U.N.O.

19. FRAMES SHALL BE SALVAGED AND CONSIDERED FOR REUSE, U.N.O.

20. HARDWARE SHALL BE SALVAGED AND CONSIDERED FOR REUSE, U.N.O.

21. WINDOW COVERINGS SHALL REMAIN. KEEP FREE OF DUST AND PROTECT FROM DAMAGE, U.N.O.

22. ELECTRICAL/ DATA DEVICES SHOWN ARE ONLY THOSE TO BE DEMOLISHED OR RELOCATED. ALL OTHER EXISTING IS TO REMAIN UNLESS ON A WALL TO BE DEMOLISHED. COORDINATE WITH NEW ELECTRICAL PLAN AND MEP PLANS.

23. ELECTRICAL DEVICES, SWITCHES AND COVERPLATES SHALL BE REUSED UNLESS DAMAGE OR AGE CONDITION. U.N.O.

24. PLUMBING SHALL BE SALVAGED AND CONSIDERED FOR RE-USE, WHERE PLUMBING FIXTURES ARE REMOVED, CONTRACTOR SHALL TERMINATE AT THE PRIMARY SOURCE, UNLESS REUSE IS POSSIBLE.

25. REMOVE AND CAP ALL OUTLETS, SWITCHES, WIRES, AND THERMOSTATS TO THEIR SOURCE IN PARTITIONS TO BE REMOVED.

26. ALL ELECTRICAL OUTLETS, WHERE NOTED TO BE REMOVED OR RELOCATED, SHALL BE CAPPED OFF TO THE NEAREST JUNCTION BOX.

27. SALVAGE ALL CEILING TILE IN GOOD CONDITION FOR RE-USE.

28. ALL LIGHT FIXTURES, GRILLES, VENTS, SENSORS, EMERGENCY AND FIRE FIXTURES ARE EXISTING AND SHALL EITHER REMAIN OR BE SALVAGED FOR RE-USE IN AREAS WHERE DEMO OCCURS.

29. COORDINATE CEILING DEMOLITION PLAN WITH FLOOR DEMOLITION PLAN INCLUDING ALL GENERAL NOTES, AND PLAN INFORMATION.

30. CEILING DEMOLITION IS NOT NECESSARILY LIMITED TO WHAT IS SHOWN, BUT IS TO INCLUDE WHAT IS NECESSARY TO COMPLETE THE WORK IN ACCORDANCE FULL SCOPE OF THESE DOCUMENTS.

DEMO PLAN LEGEND:

ALL SYMBOLS MAY NOT BE USED

EXISTING PARTITION TO REMAIN

DEMOLISHED ITEMS

EXISTING DOOR TO REMAIN

EXISTING DOOR TO BE DEMOLISHED - SAVE FOR POSSIBLE RE-USE.

FIRE EXTINGUISHER CABINET - ALL EXISTING TO REMAIN- PROVIDE AND INSTALL FIRE EXTINGUISHER PER SPECIFICATION ON SHEET A0.02 SECTION 10522 IF REQ.

KEYED DEMO PLAN NOTES:

DX

D1. REMOVE FLOORING, WALL BASE, AND ANY WALL COVERING THROUGHOUT, U.N.O. SKIM COAT WALLS WHERE VINYL WAS REMOVED. PREP FOR NEW FINISHES. (NEW WALL BASE AND PAINT ONLY AT WATER HEATER CLOSET AND ELEC ROOM, EXIST FLOORING TO REMAIN). CORNER GUARDS TO REMAIN.

D2. REMOVE EXISTING WATER HEATER. PREP TO RECEIVE NEW WATER HEATER TO MATCH EXISTING SIZE AND ADEQUATE TO SERVICE THE SUITE.

D3. EXISTING FINISHES TO REMAIN IN RESTROOMS. PROTECT DURING CONSTRUCTION.

D4. DEMO EXISTING WALL SCONCES. PATCH WALL FOR PAINT.

D5. REMOVE EXISTING SIGNAGE AT THESE AREAS ONLY. PATCH WALL FOR NEW PAINT. ALL OTHER SIGNAGE TO REMAIN.

FLOOR PLAN GENERAL NOTES:

1. GENERAL CONTRACTOR IS RESPONSIBLE FOR BRACING AND BLOCKING OF WALLS RECEIVING MILLWORK, SHELVING, TELEPHONE BOARDS, WALL MOUNTED EQUIPMENT, ETC. ALL WOOD BLOCKING, GROUNDS, ROUGH BUCKS, AND MISCELLANEOUS BLOCKING IS TO BE FIRE-RETARDENT TREATED.

2. THE GENERAL CONTRACTOR SHALL PATCH AND FINISH TO MATCH EXISTING - ANY ADJACENT WALLS, FINISHES, ETC. AFFECTED IN ANY MANNER, BY CONSTRUCTION. THE GENERAL CONTRACTOR SHALL BE RESPONSIBLE FOR THE REPAIRS OF ANY ACCIDENTAL DAMAGE HE OR HIS EMPLOYEES INFLECT UPON THE EXISTING WORK TO REMAIN. IF FOR ANY REASON, DAMAGE TO EXISTING WORK OR UTILITIES IS CONSIDERED TO BE UNAVOIDABLE, SUBMIT WRITTEN NOTIFICATION OF THIS BEFORE SIGNING THE CONTRACT. IN THE ABSENCE OF SUCH NOTIFICATION, THE GENERAL CONTRACTOR ASSUMES FULL RESPONSIBILITY FOR DAMAGE AND THE COST OF SATISFACTORILY REPAIRING OR REPLACING THE DAMAGED WORK.

3. THE GENERAL CONTRACTOR SHALL FILL AND PATCH ALL OPENINGS AND HOLES LEFT AFTER DEMOLITION, SEAL AROUND ALL PIPING, DUCTS, ETC. AND ENSURE THE INTEGRITY OF ALL REQUIRED FIRE AND OR SMOKE SEPARATIONS IN ACCORDANCE WITH APPLICABLE CODES AND ORDINANCES.

4. GENERAL CONTRACTOR IS TO NOTIFY DESIGNER IF FLOOR PENETRATIONS CONFLICT WITH STRUCTURAL ELEMENTS, DUCTWORK, ETC. PRIOR TO PROCEEDING WITH WORK.

5. PARTITIONS:

A. ALL NEW PARTITIONS TO MATCH EXISTING UNLESS NOTED OTHERWISE

B. DO NOT SCALE DRAWINGS; DIMENSIONS GOVERN. LARGE SCALE DIMENSIONS GOVERN OVER SMALL SCALE. DRYWALL SHALL BE DIMENSIONED FROM FINISH FACE TO FINISH FACE.

C. GYPSUM BOARD ABOVE CEILING TO BE TAPED AND FLOATED ONLY.

D. INSTALL 5/8" WATER RESISTANT GYPSUM BOARD AT ALL PLUMBING CHASES.

E. PENETRATIONS IN DEMISING PARTITIONS ABOVE FINISHED CEILING SHALL BE EFFECTIVELY SEALED TO PREVENT SOUND TRANSMISSION AND SHOULD COMPLY WITH FIRE-RATINGS.

F. PROVIDE BRACING ABOVE CEILING HEIGHT PARTITIONS WHEN LONG UNBRACED WALL LENGTHS OCCUR, AND AT ALL DOOR AND GLAZED OPENING JAMBS IN ACCORDANCE WITH MANUFACTURERS SPECIFICATIONS.

G. DEMISING PARTITIONS TO GO TO DECK. GC TO VERIFY AND PONY WALL TO DECK WHERE NEEDED.

6. FURR OUT ALL COLUMNS, PIPING AND EXTERIOR WALLS AS NEEDED. HOLD TIGHT TO COLUMNS AND PIPING. PROVIDE INSULATION AS REQUIRED BY CODE.

7. WHERE MULTIPLE SWITCHES, OUTLET, ETC. OCCUR ADJACENT TO EACH OTHER, GANG THEM AS CLOSELY TOGETHER AS POSSIBLE.

8. TELEPHONES AND COMPUTERS ARE NOT PART OF THIS CONTRACT, EXCEPT FOR THE INSTALLATION OF CONDUITS WITH PULL STRINGS WHERE SPECIFICALLY CALLED FOR ON THE DRAWINGS. INSTALLATION OF COMPUTER SYSTEMS AND TELEPHONES WILL BE DONE BY OTHERS AND THE GENERAL CONTRACTOR IS EXPECTED TO FULLY COOPERATE, AND ALLOW INSTALLERS ABOVE CEILING AND TO COORDINATE WITH THE OWNER AND TENANT TO FACILITATE ORDERLY INSTALLATION OF THESE SYSTEMS.

9. PATCH ALL HOLES IN FLOOR AND KNOW DOWN ALL HIGH AREAS AS REQUIRED. PROVIDE SMOOTH, LEVEL CONC. SLAB SURFACE READY TO RECEIVE NEW FINISHES.

10. PROVIDE FIRE RATED 3/4" PLYWOOD BACKING FOR O.F.O.I. TELEPHONE/COMPUTER CABLING EQUIPMENT IN MAIN BUILDING ELECTRIC ROOM. VERIFY LOCATION WITH DESIGNER.

11. PROVIDE BACKER ROD AND SEALANT AROUND ALL WINDOWS IF NOT EXISTING.

12. RE-USE SALVAGED DOORS, FRAMES AND HARDWARE WHERE POSSIBLE. ALL NEW DOORS, FRAMES AND HARDWARE SHALL MATCH EXISTING.

13. ENSURE ALL DOORS AND DOOR HARDWARE IN WORKING CONDITION. REPAIR OR REPLACE AS NEEDED.

14. ALL EXISTING TO REMAIN MILLWORK SHALL BE INSPECTED BY THE GENERAL CONTRACTOR FOR DAMAGED/MISSING PARTS. GC TO REPAIR/REPLACE ANY DAMAGED, BROKEN, OR MALFUNCTIONING MILLWORK, HARDWARE OR COMPONENTS.

15. CLEAN ALL EXISTING TO REMAIN MILLWORK TO REMOVE ANY TAPE, STICKERS, MARKS, ETC.

16. THIS IS A DESIGN BUILD PROJECT. GENERAL CONTRACTOR IS RESPONSIBLE FOR MEP DRAWINGS REQUIRED FOR PERMIT.

FLOOR PLAN LEGEND:

ALL SYMBOLS MAY NOT BE USED

EXISTING PARTITION TO REMAIN

PARTIAL HEIGHT PARTITION AS NOTED

NEW PARTITION AS NOTED

NEW PARTITION TO BE DEMISING WALL

NEW/RELOCATED SALVAGED DOOR TO MATCH EXISTING. HARDWARE TO MATCH BUILDING STANDARD

WALL TYPE - REFER TO SHEET A0.04 FOR DETAILS

FIRE EXTINGUISHER CABINET - ALL EXISTING TO REMAIN - PROVIDE AND INSTALL FIRE EXTINGUISHER PER SPECIFICATION ON SHEET A0.02 SECTION 10522 IF REQ'D

WATER LINE

KEYED PLAN NOTES:

AX

A1. PROVIDE NEW LEAD LINED IN WALLS AS REQUIRED. REFER TO PHYSICIST'S REPORT FOR SPECIFICATIONS.

A2. PROVIDE NEW 18"W X 24" H FRAMED LEAD LINED WINDOW MOUNTED AS SHOWN IN ELEVATION. 1/2" LEADED GLASS, REFER TO PHYSICIST'S REPORT.

A3. PROVIDE NEW 36"W LEAD LINED DOOR. ASSUME 1/32", REFER TO PHYSICIST'S SPECIFICATIONS.

A4. RE-HANG WINDOW SHADE. (EXISTING ON FLOOR NEAR WINDOW)

KEYED PLUMBING NOTES:

PX

NOTE: CONTRACTORS ARE TO UTILIZE STAINLESS STEEL BRAIDED SERVICE LINES WITH STAINLESS OR BRASS CONNECTIONS FOR ALL WATER CLOSETS, SINKS, AND TENANT FURNISHED - CONTRACTOR INSTALLED ITEMS (DISHWASHERS, WASHING MACHINES, WATER COOLERS, WATER HEATERS, COFFEE MAKERS, ETC.).

P1. REPLACE EXISTING WATER HEATER WITH NEW. MATCH EXISTING SIZE. PROVIDE SHUT OFF VALVE (WATTS, SERIES WDS-E220 AND LPWDS-E220 FLOODSAFE® WATER DETECTOR SHUTOFF) CONNECT WATER HEATER TO DRAIN. PROVIDE POWER FOR DEVICE.

P2. RE-INSTALL / RE-CONNECT EXISTING SINK (STORED ON TOP OF EXISTING COUNTER).

DOOR TYPE, HARDWARE NOTES:

HX

NOTE:

1. RE-USE SALVAGED HARDWARE WHERE POSSIBLE.

H1: ENTRY/OFFICE LOCK WITH CLOSER

H2: PRIVACY LOCK

H3: ENTRY/OFFICE LOCK

H4: PASSAGE SET

H5: PASSAGE SET WITH CLOSER

02 FLOOR PLAN  
SCALE: 1/8" = 1'-0

01 DEMO PLAN  
SCALE: 1/8" = 1'-0

MEDSMITH

601 MAIN STREET  
SUITE 110  
KELLER, TX 76248

LINCOLN HARRIS CSG

6688 N. CENTRAL EXPRESSWAY  
SUITE 300  
DALLAS, TX 75206  
214-461-2300

REGISTERED INTERIOR DESIGNER

7.10.18

BID/PERMIT 7.10.18

SHEET TITLE:  
DIMENSION  
PLAN  
FLOOR PLAN

SHEET NO.:

A2.01

POWER PLAN GENERAL NOTES:

1. NOTIFY DESIGNER IN WRITING OF ANY DISCREPANCIES BETWEEN DRAWING AND ACTUAL CONDITIONS BEFORE PROCEEDING WITH WORK.
2. ALL ELECTRICAL DEVICES AND DEVICE COVERS SHALL BE BUILDING STANDARD, REVIEW COLOR WITH DESIGNER PRIOR TO INSTALLATION.
3. INSTALL ELECTRICAL, TELEPHONE, AND DATA OUTLETS AT 18" A.F.F., TO CENTERLINE (PER ADA/TAS) UNLESS NOTED OTHERWISE.
4. PROVIDE JUNCTION BOX TO ALL TELEPHONE/DATA OUTLETS INDICATED. EXTEND CONDUIT 4" ABOVE CEILING. PROVIDE JUNCTION BOX, RING & STRING IF CONDUIT IS NOT REQUIRED BY CODE (GC TO VERIFY PRIOR TO SUBMITTING COSTS). COORDINATE WITH TENANT AND THEIR DATA REPRESENTATIVE.
5. VERIFY LOCATION OF THERMOSTATS WITH DESIGNER IN FIELD IF NOT NOTED ON ARCHITECTURAL DRAWINGS.
6. VERIFY ALL SPECIAL OUTLETS WITH TENANT REQUIREMENTS.
7. HEIGHTS OF OUTLETS ARE DIMENSIONED TO CENTERLINE
8. ORIENTATION OF ALL OUTLETS ABOVE MILLWORK TO MATCH EXISTING.
9. ALL OUTLETS NOT DESCRIBED IN THE ABOVE NOTES ARE TO BE CENTERED WITHIN LENGTH OF PARTITION AT 18" A.F.F. TO CENTERLINE OF DEVICE.
10. ALL ELECTRICAL CIRCUITS IN TENANT LEASE AREAS SHALL BE INDIVIDUALLY IDENTIFIED ACCORDING TO BLUEPRINT ROOM NUMBER AND TYPE WRITTEN LABELS PROVIDED ON ELECTRICAL PANELS.
11. ALIGN STROBE AND ELECTRIC OUTLET AS REQUIRED.
12. INSTALL BLANK FACE PLATES TO MATCH BUILDING STANDARD AT ANY UNUSED DATA/PHONE LOCATIONS.
13. COORDINATE DESIGNER DRAWINGS WITH MEP DRAWINGS, NOTIFY DESIGNER OF ANY DISCREPANCIES PRIOR TO WORK.
14. IF MEP DRAWINGS ARE PROVIDED, ALL ELECTRICAL OUTLETS AND DATA/PHONE LOCATIONS SHOWN ON THE MEP DRAWINGS TO BE INCLUDED IN BID. SUBMIT RFI IF NEEDED.
15. PROVIDE AND INSTALL DEDICATED CIRCUIT FOR FIRE ALARM WHERE NEEDED.
16. IF NEW DEVICE IS WITHIN 24" OF AN EXISTING DEVICE, REUSE EXISTING DEVICE.
17. CONTRACTOR TO VERIFY AVAILABLE CIRCUITS OF EXISTING ELECTRICAL PANEL AND PROVIDE ADDITIONAL PANELS, TRANSFORMERS AND OTHER EQUIPMENT AS NEEDED TO MEET TENANT REQUIREMENTS.
18. ALL EXISTING TO REMAIN U.N.O.
19. WHERE ELECTRICAL IS ADDED OR MODIFIED IN EXAM ROOMS: ALL NEW AND EXISTING ELECTRICAL WIRING TO BE HCF MC PER CODE.
20. THIS IS A DESIGN BUILD PROJECT. GENERAL CONTRACTOR IS RESPONSIBLE FOR MEP DRAWINGS REQUIRED FOR PERMIT.

POWER PLAN LEGEND: ALL SYMBOLS MAY NOT BE USED

- EXISTING ITEMS TO REMAIN
- DUPLEX WALL OUTLET
- DEDICATED CIRCUIT DUPLEX WALL OUTLET
- CEILING MOUNTED DUPLEX OUTLET
- FLOOR FLUSH MOUNTED OUTLET
- FOURPLEX WALL OUTLET
- DEDICATED CIRCUIT FOURPLEX WALL OUTLET
- DATA / TELEPHONE WALL OUTLET
- STROBE TO COMPLY WITH TAS
- CEILING MOUNTED STROBE TO COMPLY WITH TAS
- ELECTRIC PANEL
- UNDER CABINET LIGHT FIXTURE
- WALL MOUNTED FURNITURE FEED 4" X 4" BOX, S.S. COVERPLATE. PROVIDE 8 WIRE FEED AND VOICE/DATA WALL OUTLET. ALLOW ONE PER 4 WORKSTATIONS. CONNECT TENANT'S FURNITURE FEEDS TO POWER. COORDINATE WITH TENANT ON FINAL POWER REQUIREMENTS FOR SYSTEMS FURNITURE
- CARD READER BY TENANT. GC TO PROVIDE POWER & MAG LOCK AT DOOR. COORDINATE WITH TENANT ON SPECIFICATIONS

KEYED POWER PLAN NOTES: (EX)

- E1. PROVIDE NEW ELEC FOR XRAY PER EQUIPMENT PER VENDOR SHEETS (CL N1, A1, S1, S2, E1, E2, E3, E4, E5). PROVIDE DATA BOX, RING AND STRING AS SHOWN ON THIS PLAN.
- E2. PROVIDE POWER FOR WAITS SHUT OFF DEVICES IF NOT EXISTING.

RCP GENERAL NOTES:

1. RECESSED FLUORESCENT LIGHT FIXTURES TO BE CENTERED WITHIN SQUARE OF TILE UNLESS OTHERWISE INDICATED BY GRAPHIC NOTATION OR DIMENSIONS.
2. ALL CEILING INTERRUPTIONS, SUCH AS FURR-DOWNS OR PARTITIONS, SHOULD BE CHECKED AND QUESTIONS SHOULD BE CONFIRMED BEFORE ANY RELATED ELEMENTS ARE CONSTRUCTED REGARDING THESE OR ANY OTHER COORDINATION QUESTIONS, THE CONTRACTOR IS RESPONSIBLE FOR OBTAINING CLARIFICATIONS FROM THE DESIGNER BEFORE PROCEEDING WITH WORK IN QUESTION OR RELATED WORK.
3. EXISTING CEILING HEIGHT TO BE VERIFIED. NEW TO MATCH EXISTING U.N.O.
4. ALL EXISTING VENTS, GRILLES, FANS, STROBES, AND FIRE/EMERGENCY FIXTURES ARE TO BE SALVAGED, CLEANED AND REUSED U.N.O. GC TO VERIFY ALL ITEMS ARE IN GOOD WORKING ORDER. IF DAMAGED, GC TO PROVIDE NEW TO MATCH.
5. CEILING GRID IS EXISTING AND SHALL REMAIN. RE-WORK, PATCH/EXTEND TO ACCOMMODATE NEW CONSTRUCTION. LIGHT FIXTURES SHOULD BE PLACED AS SHOWN IN DRAWINGS. CONTRACTOR SHOULD NOTIFY DESIGNER BEFORE PROCEEDING WITH ANY WORK THAT VARIES FROM GRAPHIC REPRESENTATION OF THE CEILING GRID OR LIGHT PLACEMENT.
6. ALL SWITCHES TO BE MOUNTED AT 44" A.F.F. TO CENTERLINE OF SWITCH VERTICAL. HORIZONTAL CENTERLINE OF SWITCH SHALL BE NO MORE THAN 6" FROM AN ADJACENT CORNER OR DOOR FRAME U.N.O.
7. MULTIPLE SWITCHES AT THE SAME LOCATION ARE TO BE GANGED UNDER A COMMON COVER PLATE. THE CENTERLINE OF THE FIRST SWITCH SHALL BE NO MORE THAN 7" FROM AN ADJACENT CORNER OR DOOR FRAME.
8. ALL SWITCHES AND CENTERPLATES SHALL MATCH BUILDING STANDARD U.N.O.
9. ALL FIXTURES SHALL MATCH EXISTING.
10. DESIGNER AND CONTRACTOR TO REVIEW CEILING GRID BEFORE FIXTURES ARE INSTALLED. COORDINATE WITH EQUIPMENT DRAWINGS WHERE APPLICABLE.
11. PROVIDE BLOCKING AS NEEDED FOR ANY WALL OR CEILING MOUNTED LIGHT FIXTURES.
12. REWORK HVAC AND RELOCATE DIFFUSERS AND GRILLES AS NEEDED TO ACCOMMODATE NEW LAYOUT OR AS SHOWN IN MEP DRAWINGS WHERE PROVIDED.
13. EXISTING CEILING TILE SHALL BE SALVAGED AND REUSED WHERE POSSIBLE. GC TO ONLY USE TILE IN GOOD CONDITION (DISCARD AGED/DAMAGED). PROVIDE NEW TILE AS NECESSARY. ASSUME MINIMUM 30% REPLACEMENT OF TILE THROUGHOUT.
14. ACOUSTICAL CEILING SYSTEMS ARE TO COMPLY WITH ASTM C 635 AND ASTM C 636.
15. PROVIDE LIGHTING CONTROLS TO CONFORM TO CURRENT ENERGY CODE. MODIFY EXISTING AS NEEDED.
16. PROVIDE EXIT SIGNS AND EMERGENCY LIGHTING AS REQUIRED BY CODE.
17. PATCH ALL ABANDONED TAPS, HOLES OR LEAKING JOINTS IN DUCTWORK.
18. EXISTING AND RELOCATED LIGHT FIXTURES SHALL BE REFURBISHED AND CLEANED. REPLACE BAD BALLASTS, DIM AND BURNED OUT LAMPS. LAMP COLOR AND WAITAGE TO TO MATCH EXISTING AND BE CONSISTENT THROUGHOUT SPACE U.N.O.
19. AUTOMATIC FIRE SPRINKLER EXISTS AND SHALL BE MODIFIED TO CONFORM TO IMPROVEMENTS. ALL NEW SPRINKLER HEADS SHALL MATCH EXISTING AND HAVE ESCUTCHEONS. REPLACE ANY MISSING ESCUTCHEONS THROUGHOUT SPACE.
20. NEW SPRINKLER HEADS SHALL BE CENTERED WITHIN TILE U.N.O.
21. SPRINKLER HEADS WITHIN GYPSUM BOARD CEILINGS SHALL BE CONCEALED TYPE U.N.O.
22. FIRE ALARM SYSTEM IS EXISTING. MODIFY AS REQUIRED. PROVIDE NEW WHERE NOT PRESENT.
23. WHERE FIRE ALARM PANEL EXISTS, ENSURE INSTALLATION OF SMOKE DETECTOR AT FIRE ALARM PANEL.
24. RELEVEL GRID DUE TO DEMOLITION AND NEW CONSTRUCTION. CAULK HOLES AND TOUCH UP SCRATCHES AT MAIN TEES. REPLACE BADLY DAMAGED GRID. MATCH EXISTING.
25. NOT USED
26. GC TO ENSURE MECHANICAL EQUIPMENT FOR SUITE FUNCTIONS INDEPENDENTLY OF ADJACENT SUITES. IF MODIFICATION IS REQUIRED, PROVIDE LINE ITEM PRICING. U.N.O.
27. THIS IS A DESIGN BUILD PROJECT. GENERAL CONTRACTOR IS RESPONSIBLE FOR MEP DRAWINGS REQUIRED FOR PERMIT.

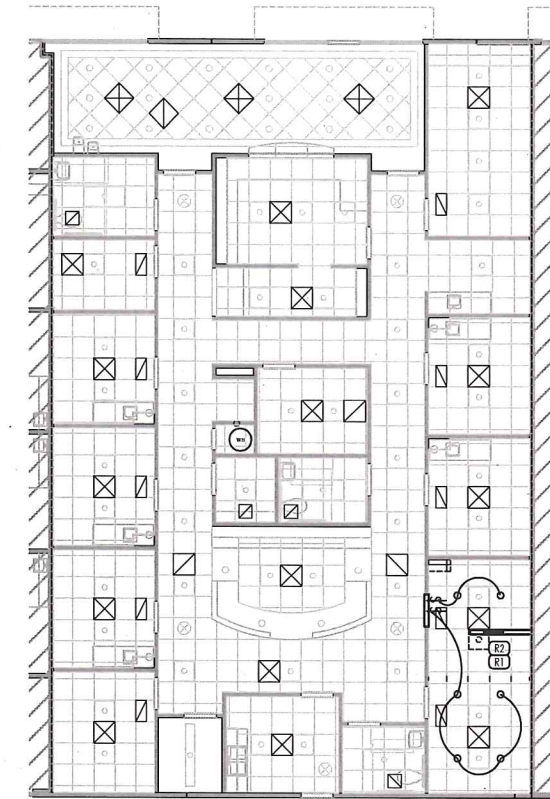
RCP LEGEND:

ALL SYMBOLS MAY NOT BE USED

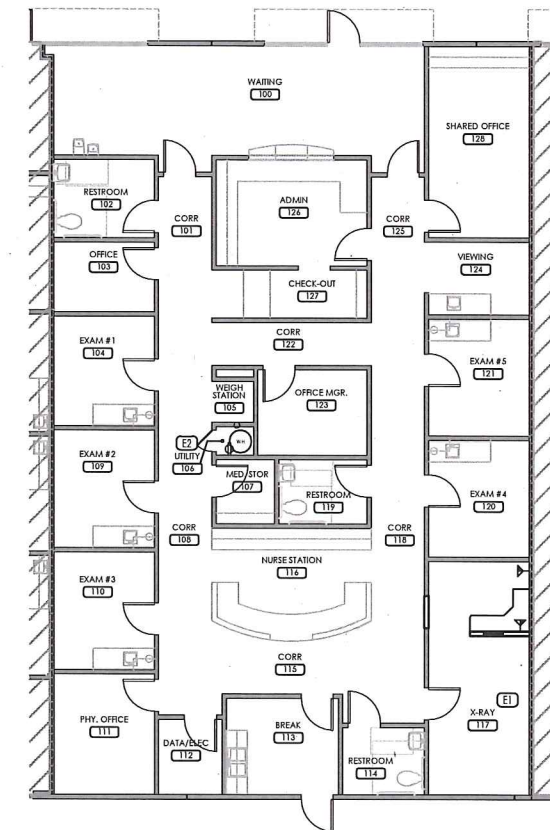
- NEW OR RELOCATED 2' X 4' FLUORESCENT LIGHT FIXTURE. RE-LAMP AS REQUIRED. MATCH EXISTING. ALL LAMPS TO BE SAME TEMPERATURE
- NEW OR RELOCATED 2' X 2' FLUORESCENT LIGHT FIXTURE
- EXISTING FIXTURE TO REMAIN
- RECESSED DOWNLIGHT FIXTURE. 6" LED.
- EXHAUST FAN
- WALL SCONCE
- WALL MOUNTED LIGHT FIXTURE
- PENDANT LIGHT FIXTURE
- RECESSED DOWN LIGHT FIXTURE. DIMMABLE, FLUOR.
- CEILING MOUNTED EXIT SIGN
- PAINTED GYP. BOARD FURR DOWN
- PAINTED GYP. BOARD U.N.O.
- NEW CEILING GRID AND ACOUSTICAL CEILING TILE. PATCH/REWORK AS NECESSARY. MATCH EXISTING.
- EXISTING TO REMAIN ACOUSTICAL CEILING TILE

KEYED RCP NOTES: (RX)

- R1. EXTEND/PATCH GRID WHERE WALL WAS REMOVED.
- R2. PROVIDE DIMMABLE RECESSED DOWN LIGHT FIXTURES (6"-FLUOR) ON SEPARATE SWITCHES AS SHOWN. ALL EXISTING TO REMAIN RECESSED TROFFER FIXTURES TO BE COMBINED ON ONE SWITCH.



02 RCP  
SCALE: 1/8" = 1'-0"



01 POWER PLAN  
SCALE: 1/8" = 1'-0"

MEDSMITH

601 MAIN STREET  
SUITE 110  
KELLER, TX 76248

LINCOLN HARRIS  
6688 N. CENTRAL EXPRESSWAY  
SUITE 300  
DALLAS, TX 75206  
214-461-2300



7.10.18

BID/PERMIT 7.10.18

SHEET TITLE:  
POWER PLAN

SHEET NO.:

A2.02

FINISH PLAN GENERAL NOTES:

SLAB PREPARATION

1. FLOOR SURFACES SHALL BE INSPECTED BY THE CONTRACTOR. THE DESIGNER SHALL BE NOTIFIED IF FLOOR LEVELING MUST BE NECESSARY FOR PROPER EXECUTION OF THE WORK.
2. CONCRETE SLABS ON GRADE OR NEW CONCRETE FLOORS SHALL BE TESTED FOR MOISTURE PRIOR TO ORDERING THE FLOORING. CONTRACTOR SHALL NOTIFY THE DESIGNER IN WRITING IF SLAB FAILS TO MEET THE MOISTURE REQUIREMENTS OF THE MANUFACTURER.

FINISHES-GENERAL

1. ALL FINISHES SHALL BE BID AS SPECIFIED. ANY SUBSTITUTION MUST BE APPROVED BY THE DESIGNER PRIOR TO SUBMISSION OF BID.
2. ALL INTERIOR FINISHES SHALL BE IN COMPLIANCE WITH LOCAL AND NATIONAL CODES. THE CONTRACTOR SHALL ADVISE THE DESIGNER IMMEDIATELY UPON DISCOVERY OF A NON-COMPLIANT FINISH.
3. ALL FINISHES SHALL BE INSPECTED UPON ARRIVAL TO THE JOB SITE FOR DEFECTS AND DYE LOT CONSISTENCY. NOTIFY DESIGNER OF ANY DEFECTS PRIOR TO INSTALLATION. THE DESIGNER SHALL ALSO BE NOTIFIED IMMEDIATELY OF ANY INSTALLATION PROBLEMS.
4. THE CONTRACTOR SHALL BE RESPONSIBLE FOR DELIVERY LEAD TIMES FOR ALL FINISHES. ALL DELIVERY TIMES MUST BE CONFIRMED AND ANY FINISHES THAT HAVE EXCESSIVE LEAD TIMES WHEREBY NOT PERMITTING INSTALLATION SHALL BE BROUGHT TO THE DESIGNER'S ATTENTION IMMEDIATELY.
5. ALL FINISHES SHALL BE INSTALLED PER MANUFACTURER'S RECOMMENDATION.
6. ALL SURFACES SHALL BE PREPARED APPROPRIATELY TO RECEIVE THE SPECIFIED FINISH. ENSURING THAT ALL HOLES, SCRAPES AND GOUGES HAVE BEEN PATCHED AND PREPARED APPROPRIATELY.
7. NONE OF THE FINISHES SHALL BE INSTALLED UNDER CONDITIONS WHICH WOULD JEOPARDIZE THE QUALITY OF THE WORK. ALL WORKMANSHIP WHICH IS JUDGED TO BE LESS THAN FIRST QUALITY BY THE DESIGNER SHALL BE REJECTED.
8. PROTECT NEW INSTALLED FINISHES FROM DAMAGE THAT MAY OCCUR FROM OTHER TRADES.
9. EXAMINE ALL FINISH SURFACES AFTER COMPLETION OF WORK AND PROCEED WITH TOUCH-UP AS REQUIRED.
10. ALL FINISHES SHALL BE LEFT IN A "LIKE NEW" CONDITION.
11. FINISHES OF THE SAME KIND SHALL ALIGN AND NAP, WEAVE OR PATTERN SHALL RUN IN THE SAME DIRECTION, U.N.O.
12. ALL INTERIOR WALL AND CEILING FINISH MATERIALS SHALL BE CLASSIFIED IN ACCORDANCE WITH ASTM E 84 OR UL 723.

FLOORING AND BASE

1. ALL IMPERFECTIONS AND SLIGHT DEPRESSIONS IN THE FLOOR SURFACE SHALL BE SKIM COATED.
2. WHERE FLOOR FINISHES OF DIFFERENT THICKNESS MEET, FLOOR SHALL BE FILLED TO A MINIMUM SLOPE OF 1" PER 12'-0" TO ALLOW A SMOOTH TRANSITION.
3. WHERE FLOOR FINISHES MEET AT DOORWAYS, TRANSITION OF FINISHES SHALL OCCUR DIRECTLY BENEATH THE CENTER OF THE DOOR LEAF WHEN DOOR IS IN THE CLOSED POSITION, U.N.O.
4. PROVIDE REDUCER STRIP WHERE FLOOR FINISHES OF DIFFERENT MATERIALS OCCUR APPROPRIATE TO THE TRANSITION. COLOR SHALL BE SELECTED BY THE DESIGNER.
5. BASE SHALL BE INSTALLED USING WHOLE UNITS. NO PIECE SHALL BE SMALLER THAN 1'-0" AT A CORNER CONDITION.
6. CONTRACTOR TO PROVIDE A PLAN SHOWING ALL CARPET SEAMING AND ACCESSORIES WITH COMPLETE WRITTEN SPECIFICATIONS FOR EACH CARPET SPECIFIED TO OWNER'S REPRESENTATIVE FOR REVIEW AND APPROVAL.

TAPE, BED, TEXTURE AND PAINT

1. TREAT JOINTS AND FASTENERS IN GYP. BD. IN ACCORDANCE WITH GA-214.
2. LEVEL OF FINISH
  - LEVEL 0 - NO TAPING OR FINISHING, TEMPORARY CONSTRUCTION.
  - LEVEL 1 - FOR SURFACES IN PLENUM.
  - LEVEL 2 - FOR WATER RESISTANT GYP. BD., WAREHOUSE STORAGE.
  - LEVEL 3 - FOR HEAVY SPRAY OR TEXTURE IS TO BE USED.
  - LEVEL 4 - FOR FLAT PAINT, LIGHT TEXTURES, OR WALLCOVERING IS TO BE USED.
  - LEVEL 5 - FOR HIGH OR SEMI-GLOSS PAINT, NON-TEXTURED FLAT PAINTS AND IN SEVERE LIGHTING CONDITIONS.
3. PAINT SURFACES PER MANUFACTURER'S RECOMMENDATION, BUT A MINIMUM OF:
  - 1 COAT OF PRIMER
  - 2 COATS OF PAINT
4. VERIFY WITH DESIGNER PRIOR TO RE-PAINTING ALL EXISTING METAL SURFACES, INCLUDING HOLLOW METAL DOOR FRAMES, FIRE EXTINGUISHER CABINETS, ACCESS PANELS, ETC.

ATTIC STOCK

1. PROVIDE 2% ATTIC STOCK OF WALL COVERING, PAINT, FLOORING, BASE AND CEILING TILE.

FINISH PLAN LEGEND:

ALL SYMBOLS MAY NOT BE USED

- XXX FINISH MATERIAL
- INDICATES TERMINATION POINT OF MATERIAL
- X-X CORNER GUARD TYPE
- L CORNER GUARD LOCATION
- FLOOR FINISH TRANSITION. PROVIDE TRANSITION STRIP WHERE NEEDED. VERIFY COLOR WITH DESIGNER.
- ARROW INDICATES DIRECTION VINYL PLANK IS TO BE LAID.

FINISH PLAN NOTES:

1. PATCH, REPAIR ANY DAMAGED WALLS / FLOORS AND AREAS WHERE EQUIPMENT, OUTLETS OR DATA HAVE BEEN REMOVED. PREP FOR NEW FINISHES.

KEYED FINISH PLAN NOTES: (FX)

- F1. WALL OPPOSITE WATER CLOSET TO HAVE TILE BASE ONLY. INSTALL TILE BORDER AROUND PAPER TOWEL DISPENSER.
- F2. ALL DOOR FRAMES TO BE PAINTED TO MATCH B-1.

FINISH SPECIFICATIONS:

FLOORING

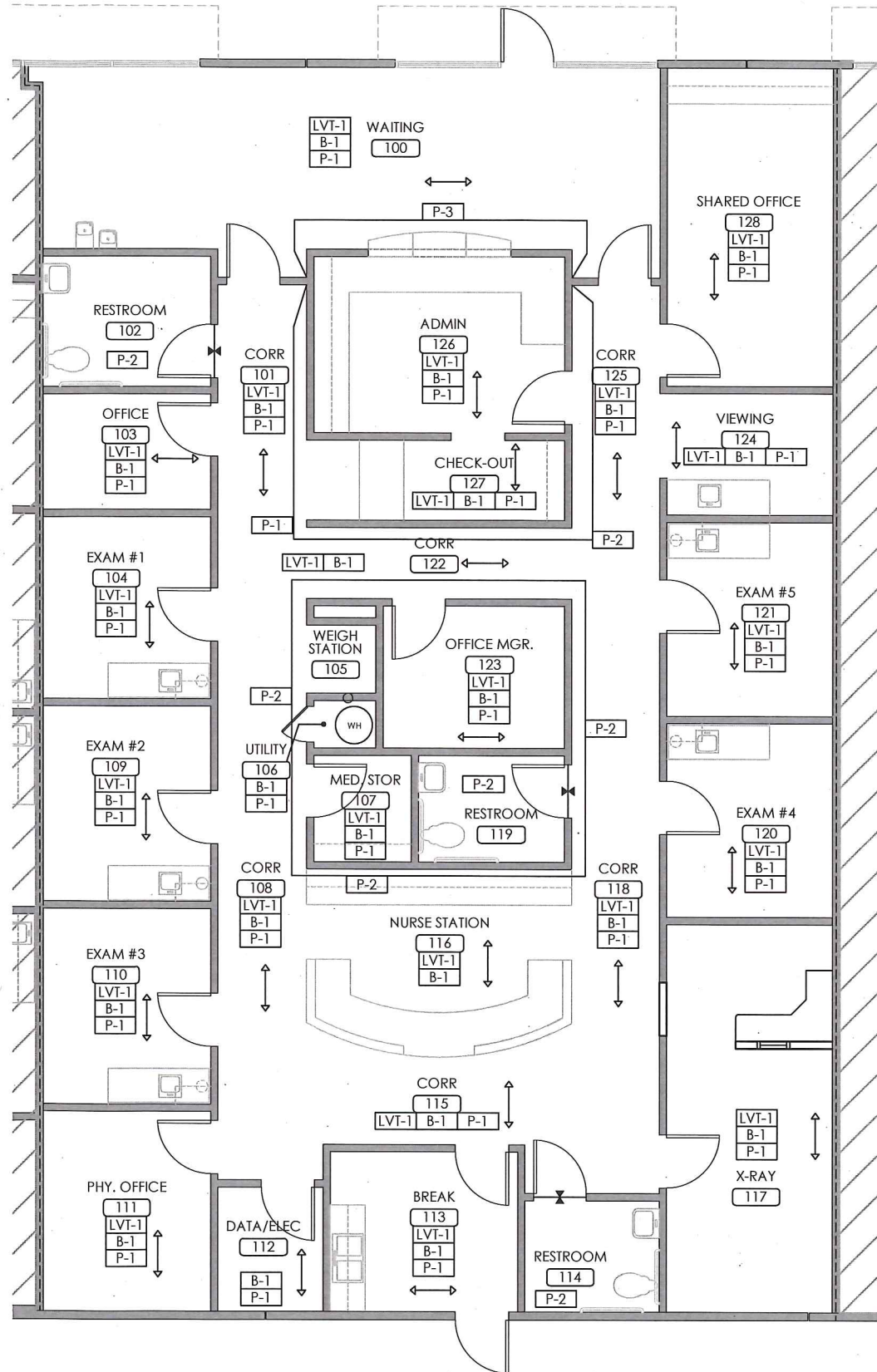
- LVT-1 LUXURY VINYL TILE  
MFG: TBD  
STYLE: TBD  
COLOR: TBD  
LOCATION: AS NOTED  
ASSUME \$4.00 SF MATERIAL COSTS.
- B-1 4" RUBBER COVE WALL BASE  
MFG.: JOHNSONITE OR SIM  
COLOR: TBD  
LOCATION: THROUGHOUT

PAINT / WALL COVERING

- P-1 PAINT, LATEX, EG-SHEL  
MFG.: SHERWIN WILLIAMS  
COLOR: TBD  
LOCATION: THROUGHOUT AS NOTED
- P-2 PAINT, LATEX, EG-SHEL  
MFG.: SHERWIN WILLIAMS  
COLOR: TBD  
LOCATION: REPLACE EXISTING "GREEN" ACCENT COLOR AND AREAS AS NOTED ON PLAN.
- P-3 PAINT, LATEX, EG-SHEL  
MFG.: SHERWIN WILLIAMS  
COLOR: TBD  
LOCATION: ACCENT AS NOTED IN WAITING ROOM.

PLASTIC LAMINATE/ WOOD/ SPECIALTY

- PL-1 PLASTIC LAMINATE  
MFG.: WILSONART  
COLOR: 4669-60 NATURAL TIGRIS



MEDSMITH

601 MAIN STREET  
SUITE 110  
KELLER, TX 76248

LINCOLN  
HARRIS  
CSG  
6688 N. CENTRAL EXPRESSWAY  
SUITE 300  
DALLAS, TX 75206  
214-461-2300



7.10.18

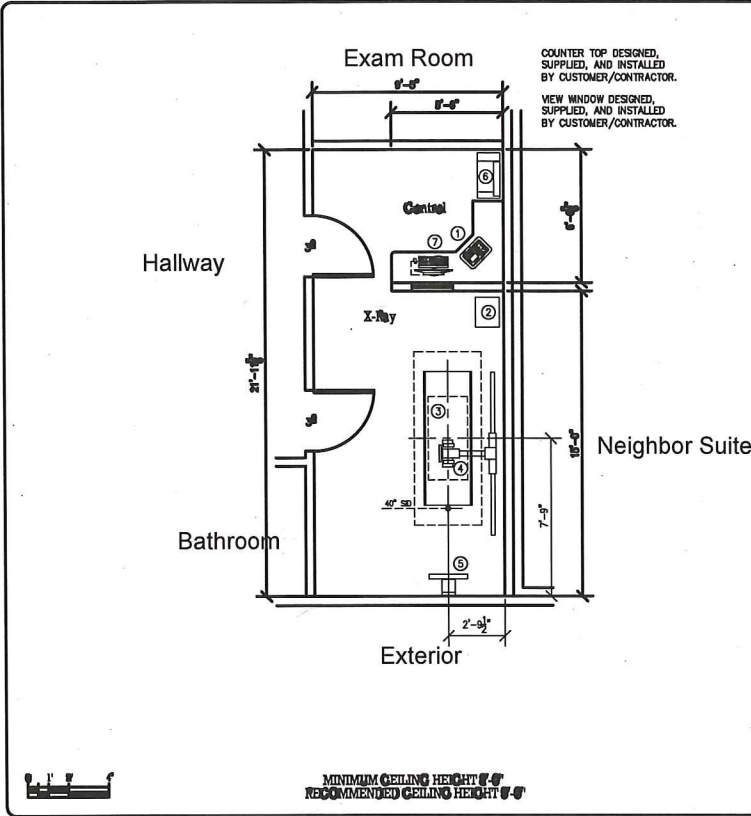
BID/PERMIT 7.10.18

SHEET TITLE:  
FINISH PLAN  
AND SPECS

SHEET NO.:

A2.03

XRAY SPECIFICATIONS

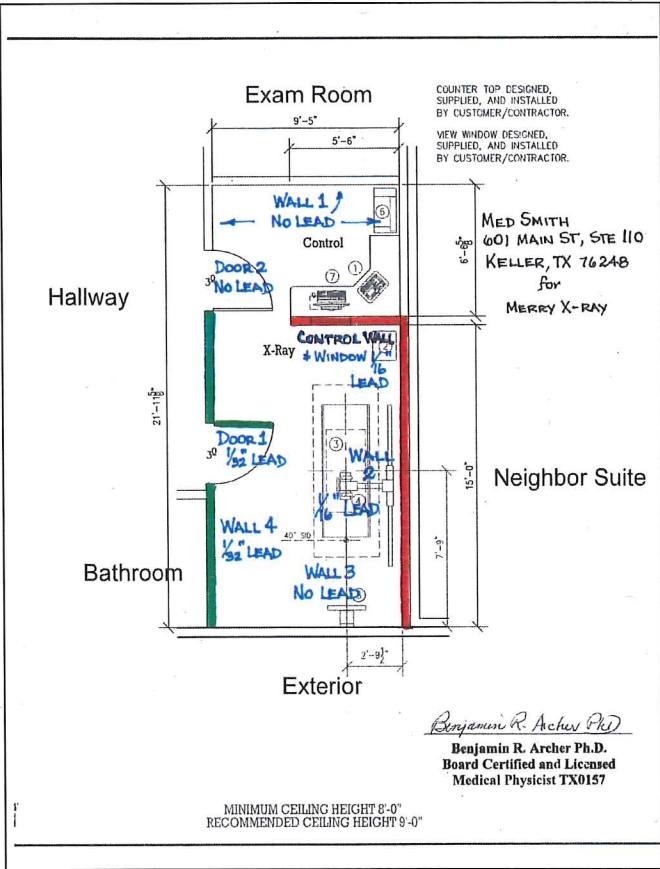


EQUIPMENT LEGEND				
CCC	CONTRACTOR FURNISHED AND CONTRACTOR INSTALLED			
CCC	OWNER FURNISHED AND OWNER OR CONTRACTOR INSTALLED			
CCC	OWNER FURNISHED AND OWNER OR VENDOR INSTALLED			
ITEM	DESCRIPTION	SIZE	WT/LBS	BTU/HR
CCC 1	THE 40KV CONTROL CONSOLE	17" x 17"	13	120
CCC 2	THE 40KV GENERATOR CABINET	17" x 17" x 17"	143	1025
CCC 3	THE 4-WAY FLOAT TOP RADIOGRAPHIC TABLE	48" x 48" x 17"	170	N/A
CCC 4	THE FLOOR-TO-WALL TUBESTAND	48" x 48" x 17"	302	673
CCC 5	THE WALL CASSETTE HOLDER	17" x 17"	130	N/A
CCC 6	CARDSTREAM DIRECTVIEW WITH FLEX OR SYSTEM	17" x 17"	65	330
CCC 7	CARDSTREAM WORKSTATION PC, MONITOR & KEYBOARD	17" x 17"	64	1130

CUSTOMER: MedSmith  
Equipment Layout / Legend  
DATE: 7/10/18  
DRAWN BY: J. Archer  
CHECKED BY: J. Archer  
SHEET: A1

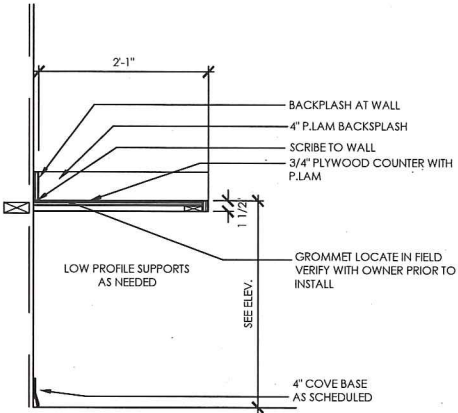
01 XRAY EQUIP PLAN - FOR REF ONLY  
SCALE: NTS

SEE XRAY EQUIPMENT SHEETS FOR ADDITIONAL SPECIFICATIONS. ACTUAL EQUIPMENT PROVIDED BY TENANT. ELECTRICAL AND STRUCTURAL BY GC AS NOTED IN PLANS.

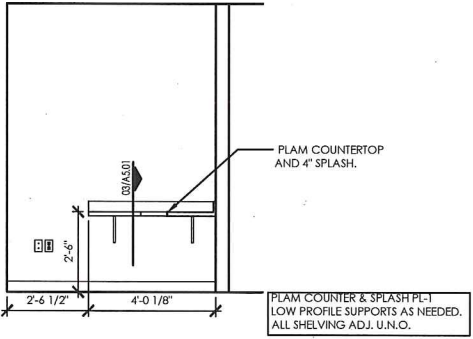


SEE PHYSICIST'S REPORT FOR ADDITIONAL SPECIFICATIONS.

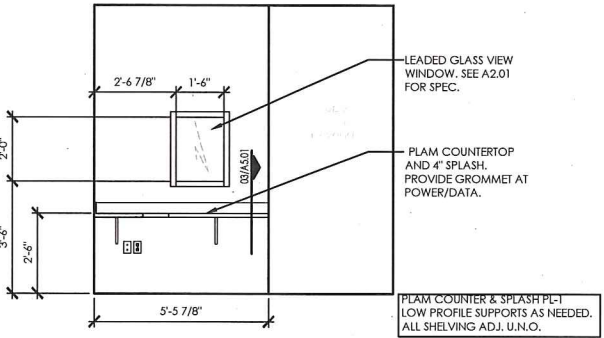
MILLWORK ELEVATIONS & DETAILS



03 MILLWORK SECTION  
SCALE: 1" = 1'-0"



02 XRAY ELEVATION  
SCALE: 3/8" = 1'-0"



01 XRAY ELEVATION  
SCALE: 3/8" = 1'-0"

MEDSMITH

601 MAIN STREET  
SUITE 110  
KELLER, TX 76248

LINCOLN HARRIS  
6688 N. CENTRAL EXPRESSWAY  
SUITE 300  
DALLAS, TX 75206  
214-461-2300

7/10/18

BID/PERMIT 7.10.18

SHEET TITLE:  
INTERIOR  
ELEVATIONS

SHEET NO.:

A5.01

PREFACE

These drawings have been prepared to provide siting, electrical, mechanical and environmental specifications required to accomodate the installation and operation of diagnostic imaging equipment and sub-components illustrated.

The layout(s) provides for components purchased from and/or provided by the equipment Vendor and shall serve as a guide for installation by the local Service/Installation Representatives.

Information in this drawing package relating to building/facility specifications that will support Vendor components such as electrical, structural, mechanical, and environmental requirements, shall be utilized as a guide by the Customer's Architect and/or Contractor. Facility conditions will dictate actual construction methods and materials applied. However, ALL methods and materials must comply with Vendor specifications, as well as Local and/or National Building Codes having jurisdiction.

The quality of construction methods, materials, and conformance to vendor specifications and tolerances will affect equipment performance.

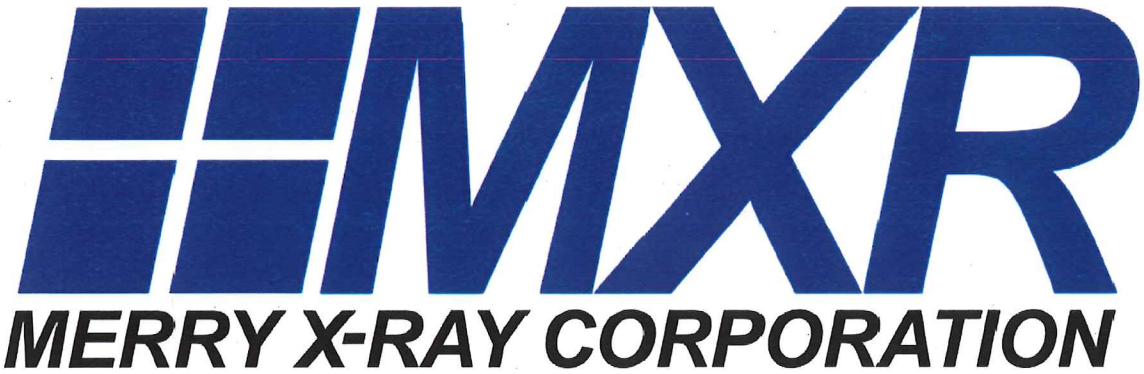
DISCLAIMER

These drawings are **REFERENCE DRAWINGS** only, illustrating general equipment layout and facility-related equipment requirements. The information contained in these drawings is provided for the use of Customers and/or their designated Architects, Engineers, or other Design/Construction professionals in the preparation of official construction documents. The equipment Vendor and preparer of these drawings makes no warranty or representation, either express or implied, with respect to the attached drawings, and in no event will either be liable for any direct, indirect, special, incidental, or consequential damages resulting in any manner from use of the attached drawings.

These drawings are provided with the understanding that providing such drawings does not alter any of the terms and conditions of sale between equipment Vendor and Customer.

These drawings are **NOT TO BE USED AS CONSTRUCTION DOCUMENTS**. It is the responsibility of the Customer or his/her designate to insure the correct siting and placement of all purchased diagnostic equipment based on these reference drawings. The Customer or his/her designate shall be responsible for the complete and accurate incorporation of all specifications and requirements from these reference drawings into official construction drawings and documents for use in the preparation of the site.

The attached drawings are subject to change without notice. This disclaimer may not be modified by anyone other than the preparer.



CONTACT:

Roger Chamberlain  
(815) 568-0107  
Roger.Chamberlain@merryxray.com

PREPARED FOR:

MedSmith  
Fort Worth, TX

PREPARED BY:

Medical Design, Inc.  
1251 Eugenia Terrace Lawrenceville, GA 30046

DRAWING INDEX		REV	DATE
COVER SHEET	- C1	-	07/02/18
NOTES / CUSTOMER RESPONSIBILITIES	- N1	-	07/02/18
EQUIPMENT LAYOUT / LEGEND	- A1	A	06/26/18
STRUCTURAL LAYOUT/ LEGEND	- S1	-	07/02/18
STRUCTURAL NOTES	- S2	-	07/02/18
ELECTRICAL LAYOUT / LEGEND	- E1	-	07/02/18
ELECTRICAL DETAILS	- E2	-	07/02/18
ELECTRICAL NOTES / POWER SPECIFICATIONS	- E3	-	07/02/18
ELECTRICAL NOTES / POWER SPECIFICATIONS	- E4	-	07/02/18
SCHEMATIC RISER DIAGRAM	- E5	-	07/02/18

GENERAL NOTES:

ALL WORK EXCEPT INSTALLATION OF DIAGNOSTIC IMAGING EQUIPMENT IS TO BE DONE BY OTHERS THAN EQUIPMENT VENDOR.

PURCHASER, AT HIS EXPENSE, SHALL EMPLOY A REGISTERED PHYSICIST TO SPECIFY AND TEST ALL RADIATION PROTECTION REQUIRED.

PURCHASER OR HIS CONTRACTOR IS RESPONSIBLE FOR VERIFYING ALL PASSAGE OPENINGS ARE ADEQUATE FOR THE TRANSPORTATION OF DIAGNOSTIC IMAGING EQUIPMENT FROM SHIPPING VAN INTO EXAM ROOM, AND IS RESPONSIBLE FOR ANY RIGGING, SPECIAL HANDLING, OR FACILITY MODIFICATIONS NECESSARY TO MEET THE REQUIREMENTS FOR SAFE PASSAGE OF EQUIPMENT.

CUSTOMER TO PROVIDE A LOCKABLE STORAGE AREA IN OR NEAR THE PROPOSED ROOM FOR STORAGE OF TOOLS AND TEST EQUIPMENT USED BY SERVICE ENGINEERS DURING THE INSTALLATION.

CUSTOMER TO PROVIDE A DUST FREE, AIR CONDITIONED, AND HUMIDIFIED ENVIRONMENT FOR THE STORAGE OF ALL DIAGNOSTIC IMAGING EQUIPMENT IF THE PROPOSED INSTALLATION SITE IS NOT COMPLETE AT THE TIME OF EQUIPMENT DELIVERY. CUSTOMER IS RESPONSIBLE FOR DELIVERY OF EQUIPMENT FROM STORAGE TO THE PREPARED SITE AS NEEDED.

LIGHTING FIXTURES, VENTS, SPRINKLERS, ETC. TO BE FLUSH WITH FINISHED CEILING.

ANY BACKING REQUIRED SHALL BE A MINIMUM THICKNESS OF 1/2" (WOOD) OR 3/16" (STEEL) SECURED TO A MINIMUM OF THREE STUDS WITH THE FACE OF THE BACKING FLUSH WITH THE LINE OF STUDS. ALL BACKING SHALL EXTEND A MINIMUM OF 4" ABOVE AND 4" BELOW MOUNTING POINTS.

ALL CEILINGS TO BE 2' x 4' LIFT-OUT PANELS OF MATERIAL ACCEPTABLE TO CODES IF APPROVED BY CODES. LEAVE 12" MINIMUM ABOVE CEILING TILES FOR SERVICE ACCESS.

ALL DIMENSIONS ARE FROM FINISHED SURFACES UNLESS OTHERWISE INDICATED ON THESE PLANS. CONTACT EQUIPMENT VENDOR OR DESIGNATED REPRESENTATIVES SHOULD ACTUAL ROOM DIMENSIONS VARY FROM THOSE INDICATED ON THESE DRAWINGS.

ALL WORK SHALL COMPLY WITH LOCAL, STATE, AND FEDERAL BUILDING CODES THAT HAVE JURISDICTION.

MODIFICATIONS SHALL NOT BE MADE TO THESE DRAWINGS OR ANY CONSTRUCTION CHANGES APPROVED WITHOUT WRITTEN CONSENT FROM AN AUTHORIZED EQUIPMENT VENDOR PERSONNEL OR ITS DESIGNATED REPRESENTATIVE.

PURCHASER OR HIS CONTRACTOR IS RESPONSIBLE FOR PROVIDING AND INSTALLING ALL PLUMBING, WALL, FLOOR, OR CEILING REINFORCING UNISTRUT, ELECTRICAL CONDUIT, RECEPTACLES, WIRE, MAIN SWITCHES, PANEL BOARDS, JUNCTION BOXES AND COVER PLATES, BUSHINGS, WIRE OR CABLE DUCT, OR TROUGH SPECIFIED OR REQUIRED FOR THE SATISFACTORY INSTALLATION OF DIAGNOSTIC IMAGING EQUIPMENT.

ANY DETAILS SHOWN IN THESE DRAWINGS ARE SAMPLE DETAILS BASED UPON STANDARD BUILDING PRACTICES AND ARE NOT INTENDED FOR CONSTRUCTION USE. ACTUAL CONSTRUCTION DETAILS, LOADING FACTORS, SPECIFICATIONS, AND ALL CALCULATIONS SHALL BE PREPARED BY A PROFESSIONAL ENGINEER AT THE PURCHASER'S EXPENSE.

INSTALLATION OF DIAGNOSTIC IMAGING EQUIPMENT WILL NOT COMMENCE UNTIL THE PROPOSED SPACE MEETS ALL THE REQUIREMENTS INDICATED WITHIN THIS SET OF DRAWINGS AND / OR REQUIRED BY CODES. THE PROPOSED SPACE MUST BE DUST FREE, AIR CONDITIONED, AND HUMIDIFIED AS REQUIRED. FILM PROCESSING MUST BE READILY AVAILABLE FOR EQUIPMENT CALIBRATION AND TESTING.

EXAM ROOM FLOOR UNDER ALL FLOOR MOUNTED X-RAY EQUIPMENT SHALL BE FLAT AND LEVEL TO WITHIN 0.125" IN ALL DIRECTIONS IN A 10' SPAN.

SITE PREPARATION REQUIREMENTS:

- A SMOOTH EFFICIENT INSTALLATION IS VITAL TO THE EQUIPMENT VENDOR AND ITS CUSTOMERS. THE FOLLOWING ARE THE MINIMUM REQUIREMENTS WHICH MUST BE MET PRIOR TO EQUIPMENT INSTALLATION:
- ALL WALLS TO BE PAINTED OR PAPERED, BASEBOARDS INSTALLED, FLOORS TILED OR COVERED, AND CEILING PANELS AND LIGHT FIXTURES, LIGHT SWITCHES INSTALLED.
  - ALL DOORS, WINDOWS, AND PROTECTIVE BARRIERS INSTALLED WITH ALL HARDWARE OPERATIONAL.
  - ELECTRICAL SYSTEM INCLUDING MAINSWITCHES, LOAD CENTERS, JUNCTION BOXES, CONDUITS, WIRES, DUCTS, RACEWAYS, RECEPTACLES, AND COVERPLATES INSTALLED AND OPERATIONAL.
  - INCOMING POWER SUPPLIES CONNECTED TO X-RAY MAINSWITCH AND LOAD CENTER. ALL BRANCH CIRCUIT BREAKERS AND BRANCH WIRING INSTALLED, LABELED, AND TERMINATED BY CONTRACTOR.
  - ROOM LIGHTING INSTALLED AND OPERATIONAL. PROVIDE ALL NECESSARY CONTACTORS AND SWITCHES REQUIRED FOR LIGHT SWITCHES/DIMMERS AS REQUIRED.
  - ALL CONVENIENCE OUTLETS INSTALLED AND OPERATIONAL.
  - OVERHEAD SUPPORT SYSTEM PROPERLY INSTALLED WITH BOTTOM MEMBERS LEVEL TO WITHIN 1/16", PARALLEL, AND FREE OF DEFLECTION IN ALL DIRECTIONS.
  - ALL CONTRACTOR SUPPLIED WIRES OR CABLES PULLED, TAGGED, AND TERMINATED.
  - DUST-FREE ENVIRONMENT WITHIN AND SURROUNDING THE PROCEDURE ROOM.
  - COMPLETE OPERATIONAL HVAC (HEATING, VENTILATING, AND AIR CONDITIONING) SYSTEM WITHIN SPECIFICATIONS LISTED OR REQUIRED TO MAINTAIN EQUIPMENT TO BE INSTALLED.
  - ALL ARCHITECTURAL ITEMS FINISHED AND OPERATIONAL INCLUDING CASEWORK, SINKS, DOORS, RAISED FLOORING, WINDOWS, AND WALL SUPPORTS.
  - ANY PLUMBING COMPLETED AND OPERATIONAL.
  - EQUIPMENT VENDOR DOES NOT INSTALL LEAD PROTECTIVE SCREENS, PANELS, OR LEAD GLASS WINDOWS AND FRAMES. THIS WORK IS TO BE PERFORMED BY THE CUSTOMER OR HIS CONTRACTOR.

WIRING NOTES:

ELECTRICAL CONTRACTOR TO SUPPLY AND INSTALL ALL BOXES, CONDUITS, DUCT, WIRE, MAIN SWITCHES, ETC. REQUIRED TO MAKE THE X-RAY SYSTEM OPERATIONAL WITHIN THE SPACE PROVIDED.

ALL WIRES TO BE TYPE THHN, OR THW STRANDED COPPER UNLESS OTHERWISE NOTED.

CONDUIT AND DUCT RUNS ARE SHOWN SCHEMATICALLY. ACTUAL BUILDING CONDITIONS WILL DETERMINE CONDUIT AND DUCT ROUTES. MAKE THE MOST DIRECT ROUTE POSSIBLE FOR THE SHORTEST POINT TO POINT DISTANCES BETWEEN OPENINGS.

CONDUIT TURNS TO HAVE LARGE, SWEEPING BENDS WITH MINIMUM RADIUS AS SPECIFIED IN NEC ART. 346-10. 90° ELBOWS ARE NOT ACCEPTABLE.

ELECTRICAL CONTRACTOR TO PROVIDE 10'-0" WIRE TAILS FOR ALL WIRES UNLESS OTHERWISE SPECIFIED AND IDENTIFY BOTH ENDS OF ALL WIRES.

ELECTRICAL CONTRACTOR TO PROVIDE 120 VAC CONVENIENCE OUTLETS WITHIN 10' OF ALL X-RAY EQUIPMENT INDICATED. ADDITIONAL OUTLETS MAY BE REQUIRED BY CODE. CONSULT CODES FOR REQUIREMENTS AND OUTLET PLACEMENT ABOVE FLOOR OR COUNTER TOPS AS REQUIRED.

PROVIDE REMOVABLE COVERS FOR ALL BOXES AND LEAVE PULL WIRE IN ALL CONDUITS.

ALL CONDUITS INDICATED ON THESE DRAWINGS SHALL CONNECT TO THE CONTROL CABLE SIDE (LARGE AREA) OF TROUGH UNLESS OTHERWISE NOTED.

CONTRACTOR MAY USE AND OR ADAPT ALL EXISTING CONDUITS, BOXES, WIRES, MAIN SWITCHES, ETC., WHERE POSSIBLE.

ALL BOXES, STUBBED CONDUITS, WIREMOLD, DUCT, MAIN BREAKERS, LOAD CENTERS, ETC. INDICATED ON THESE DRAWINGS HAVE BEEN COORDINATED WITH X-RAY EQUIPMENT PLACEMENT. CONTACT EQUIPMENT VENDOR FOR PROPER VERIFICATION OF EQUIPMENT PLACEMENT AND CLEARANCES BEFORE MAKING ANY CHANGES TO THE LOCATIONS INDICATED ON THESE DRAWINGS.

ELECTRICAL POWER FOR X-RAY EQUIPMENT REQUIRES VERY LARGE CURRENTS FOR EXTREMELY SHORT PERIODS OF TIME WHILE THE SUPPLY VOLTAGE MUST REMAIN STABLE. SEE ELECTRICAL SHEETS "E" IN THIS SET FOR DETAILS.

POWER LINES FOR X-RAY SYSTEMS SHALL BE DEDICATED LINES RUN DIRECTLY FROM NEAREST HOSPITAL MAIN DISTRIBUTION TRANSFORMER OR DISTRIBUTION PANEL NOT SUPPLYING "SPARKY" OR HIGH INSTANTANEOUS PEAK LOAD DEVICES (I.E.; MOTORS, ELEVATORS, AIR CONDITIONERS, CLOCK TIMERS, ETC.). UNDER NO CIRCUMSTANCES SHALL ANY OTHER ELECTRICAL EQUIPMENT BE CONNECTED TO THE X-RAY POWER LINES NOW OR IN THE FUTURE.

ELECTRICAL CONTRACTOR SHALL BE RESPONSIBLE FOR SUPPLYING AND INSTALLING PATIENT GROUNDING SYSTEM WHEN REQUIRED BY CODE. GROUNDING SYSTEM TO COMPLY WITH NEC ARTICLE 517 AND NFPA 70.

GENERAL ROOM LIGHTING IS NOT INDICATED ON THESE DRAWINGS AND IS THE RESPONSIBILITY OF THE PURCHASER OR HIS ARCHITECT AND ELECTRICAL ENGINEER. IT IS SUGGESTED THAT DIMMERS BE USED TO CONTROL LIGHT LEVELS, ESPECIALLY IN AREAS WHERE MONITORS ARE USED.

TROUGH / RACEWAY NOTES:

ALL TROUGH TO BE SQUARE D, WALKER DUCT OR EQUAL FLOOR AND WALL TRENCH DUCT WITH REMOVABLE COVERS THE FULL LENGTH. ALL TROUGH TO BE 10" X 3 1/2", OR AS INDICATED IN THESE DRAWINGS, OR PROVIDE THE EQUIVALENT NOMINAL SIZE AVAILABLE.

ALL FLUSH DUCT TO HAVE OVERSIZED COVERS AND ALL SURFACE MOUNTED OR ABOVE CEILING DUCT TO HAVE COVERS THE SAME SIZE AS THE DUCT. ALL FLUSH IN FLOOR DUCT TO HAVE GASKETED REMOVABLE COVERS WITH TILE TRIM TO PREVENT ENTRY OF LIQUIDS. CONTACT MANUFACTURER FOR ALL ROUGH IN SIZES REQUIRED.

ALL TROUGH SHALL BE FLUSH WITH FINISHED SURFACES UNLESS OTHERWISE SPECIFIED AND PROVIDED WITH OVERSIZED REMOVABLE COVERS THE FULL LENGTH. COVERS SHALL BE CLEAR OF ANY OBSTRUCTION FOR INSERTION OF VENDOR SUPPLIED CABLES. IF IT IS NECESSARY THAT THE TROUGH BE INSTALLED OTHER THAN AS INDICATED ON THESE PLANS, CONTACT EQUIPMENT VENDOR OR VENDOR REPRESENTATIVE FOR PROPER VERIFICATION OF ALL EQUIPMENT PLACEMENT AND TROUGH CLEARANCES.

ALL DUCT ABOVE CEILING OR BELOW FLOOR TO BE PROVIDED WITH REMOVABLE COVERS FACING UP. PROVIDE ADEQUATE SPACE ABOVE DUCT FOR INSTALLATION OF VENDOR SUPPLIED CABLES AT TIME OF EQUIPMENT INSTALLATION. MAINTAIN MINIMUM CLEARANCE ABOVE CEILING OR BELOW FLOOR TO DUCT FOR SHORTEST CABLE RUNS. DUCT INSTALLED MORE THAN 12" ABOVE CEILING OR 18" BELOW FLOOR IS UNACCEPTABLE.

GENERAL CONTRACTOR SHALL PAINT ALL EXPOSED AREAS OF WALL AND CEILING TROUGH. CONSULT WITH THE EQUIPMENT PURCHASER ON MATCHING OR ACCENT COLOR.

CONTRACTOR TO SUPPLY AND INSTALL TWO REMOVABLE DIVIDER STRIPS WITHIN DUCT TO FORM THREE EQUAL AREAS FOR SEPARATION OF HIGH VOLTAGE CABLES, LOW VOLTAGE CABLES, AND DATA CABLES. PROVIDE CROSSOVER TUNNELS AT ALL INTERSECTIONS AS REQUIRED.

ENVIRONMENTAL NOTES:

TEMPERATURE MUST BE REGULATED BETWEEN 68°-78°F WITH RELATIVE HUMIDITY REGULATED BETWEEN 45%-70% NON-CONDNSING.

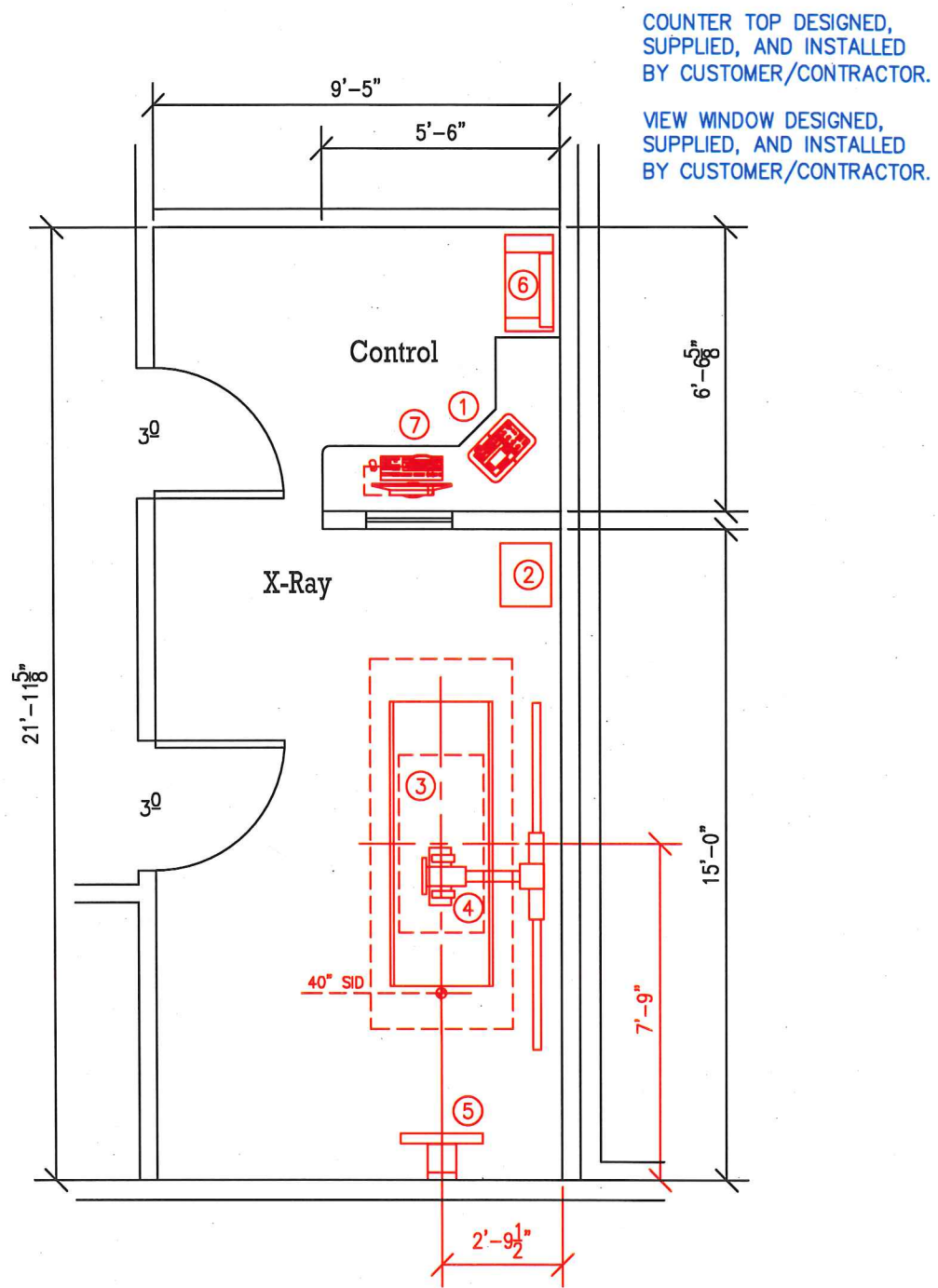
HEAT OUTPUT OF EQUIPMENT IN ONE AREA MUST NOT EFFECT TEMPERATURE AND HUMIDITY REGULATIONS IN OTHER AREAS. IT IS STRONGLY RECOMMENDED THAT EACH AREA BE INDIVIDUALLY ENVIRONMENTALLY CONTROLLED WITH A THERMOSTAT.

AN AUDIBLE THERMAL ALARM IS RECOMMENDED IN THE CONTROL AREA TO ALERT THE SYSTEM OPERATOR TO TURN THE SYSTEM OFF SHOULD THE AMBIENT TEMPERATURE IN ANY AREA EXCEED THE SPECIFICATIONS LISTED ABOVE.

SUPPLY DIFFUSERS SHALL NOT CAUSE DIRECT AIR CURRENTS ON PATIENT OR OPERATORS.

THESE DRAWINGS ARE SUBMITTED TO SUGGEST LOCATION OF ALL DIAGNOSTIC IMAGING EQUIPMENT AND ASSOCIATED APPARATUS; ELECTRICAL WIRING DETAILS, AND ROOM ARRANGEMENTS. IN PREPARING THIS DRAWING, EVERY EFFORT HAS BEEN MADE TO CONFORM TO THE ACTUAL EQUIPMENT SPECIFICATIONS AND TO THE ACTUAL CONSTRUCTION PURPOSES. THE PREPARED DRAWINGS CANNOT ACCEPT ANY RESPONSIBILITY FOR DAMAGES RESULTING THEREFROM. CONSTRUCTION DRAWINGS TO BE PREPARED BY PURCHASER'S ARCHITECT OR CONTRACTOR.





MINIMUM CEILING HEIGHT 8'-0"  
RECOMMENDED CEILING HEIGHT 9'-0"

EQUIPMENT LEGEND

CFCI.....CONTRACTOR FURNISHED AND CONTRACTOR INSTALLED  
OFCI.....OWNER FURNISHED AND OWNER OR CONTRACTOR INSTALLED  
OFOI.....OWNER FURNISHED AND OWNER OR VENDOR INSTALLED

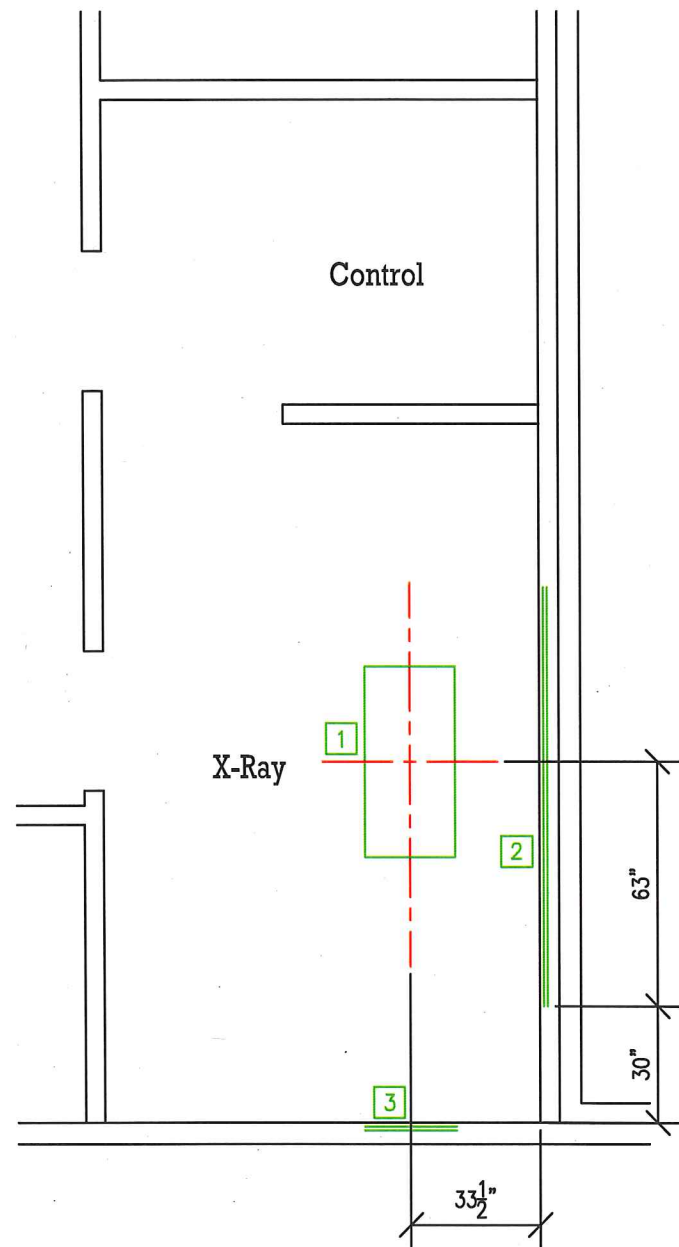
	ITEM	DESCRIPTION	SIZE	WT/LBS	BTU/HR	DETAIL SHEET
OFOI	①	TXR 40KW CONTROL CONSOLE	17" W 11" D 2" H	13	120	
OFOI	②	TXR 40KW GENERATOR CABINET	18" W 14" D 22" H	143	1025	
OFOI	③	TXR 4-WAY FLOAT TOP RADIOGRAPHIC TABLE	79" W 29" D 31" H	176	N/A	
OFOI	④	TXR FLOOR-TO-WALL TUBESTAND	96" W 37" D 89" H	352	873	
OFOI	⑤	TXR WALL CASSETTE HOLDER	23" W 13" D 84" H	130	N/A	
OFOI	⑥	CARESTREAM DIRECTVIEW VITA FLEX CR SYSTEM	26.7" W 13.4" D 17.7" H	55	330	
OFOI	⑦	CARESTREAM WORKSTATION PC, MONITOR & KEYBOARD	17.2" W 9.5" D 19" H	64	1130	

THESE DRAWINGS ARE SUBMITTED TO SUGGEST LOCATION OF ALL DIAGNOSTIC IMAGING EQUIPMENT AND ASSOCIATED APPARATUS, ELECTRICAL WIRING DETAILS, AND ROOM ARRANGEMENTS. IN PREPARING THIS DRAWING, EVERY EFFORT HAS BEEN MADE TO CORRELATE THE LOCATION OF EQUIPMENT WITH THE EXISTING CONDITIONS OF THE ROOM. HOWEVER, THE DRAWINGS ARE NOT TO BE USED FOR CONSTRUCTION PURPOSES, AND THE PREPARED CANNOT ACCEPT ANY RESPONSIBILITY FOR DAMAGES RESULTING THEREFROM. CONSTRUCTION DRAWINGS TO BE PREPARED BY PURCHASER'S ARCHITECT OR CONTRACTOR.



DRAWN BY:  
R. Rider  
DATE:  
06/26/18  
DWG. NO.  
18259A  
SHEET:  
A1

CUSTOMER:  
MedSmith  
Fort Worth, TX  
Equipment Layout / Legend



### STRUCTURAL SUPPORT LEGEND

CFCI.....CONTRACTOR FURNISHED AND CONTRACTOR INSTALLED  
OFCI.....OWNER FURNISHED AND OWNER OR CONTRACTOR INSTALLED  
OFOI.....OWNER FURNISHED AND OWNER OR VENDOR INSTALLED

	ITEM	DESCRIPTION	DETAIL SHEET
OFOI	1	TXR TABLE BASE LOCATION.	
CFCI	2	12" H x 108" W (2x12 OR EQUAL) WALL SUPPORT 95" ABOVE FINISHED FLOOR TO CENTER. 500 LB/POINT PULL PLUS REQUIRED SAFETY FACTOR.	
CFCI	3	8" H x 24" W (2x8 OR EQUAL) WALL SUPPORT 85" ABOVE FINISHED FLOOR TO CENTER. 250 LB/POINT PULL PLUS REQUIRED SAFETY FACTOR.	

THESE DRAWINGS ARE SUBMITTED TO SUGGEST LOCATION OF ALL DIAGNOSTIC IMAGING EQUIPMENT AND ASSOCIATED APPARATUS, ELECTRICAL WIRING DETAILS, AND ROOM ARRANGEMENTS. IN PREPARING THIS DRAWING, EVERY EFFORT HAS BEEN MADE TO CONFORM TO THE ACTUAL EQUIPMENT. THE PREPARED FOR ACTUAL CONSTRUCTION PURPOSES AND THE PREPARED CANNOT ACCEPT ANY RESPONSIBILITY FOR DAMAGES RESULTING THEREFROM. CONSTRUCTION DRAWINGS TO BE PREPARED BY PURCHASER'S ARCHITECT OR CONTRACTOR.



DRAWN BY:  
D. CROSBY  
DATE:  
07/02/18  
DWG. NO.  
18259  
SHEET:  
S1

CUSTOMER:  
MedSmith  
Fort Worth, TX  
Structural Layout / Legend

STRUCTURAL NOTES:

- THE GENERAL CONTRACTOR SHALL PROVIDE AND INSTALL ALL STRUCTURAL SUPPORT MEMBERS AND NEEDED HARDWARE FOR THE INSTALLATION OF ALL X-RAY AND ANCILLARY EQUIPMENT.
- EXAMINATION ROOM FLOOR TO BE FLAT AND LEVEL TO WITHIN  $\pm 1/8"$  IN ALL DIRECTIONS FROM TABLE CENTER TO 10' RADIUS AND CAPABLE OF SUPPORTING THE TABLE WEIGHT INDICATED ON SHEET "A1" OVER AN AREA OF 60" X 36" MINIMUM.
- ANY STRUCTURAL DETAILS SHOWN ARE SAMPLE DETAILS BASED UPON STANDARD BUILDING PRACTICES AND ARE NOT INTENDED FOR CONSTRUCTION USE. ACTUAL CONSTRUCTION DETAILS, LOADING FACTORS, SPECIFICATIONS, AND ALL CALCULATIONS SHALL BE PREPARED BY A PROFESSIONAL STRUCTURAL ENGINEER AT THE HOSPITAL'S EXPENSE.
- METHODS OF SUPPORT FOR THE STEELWORK THAT WILL PERMIT ATTACHMENT TO STRUCTURAL STEEL OR THROUGH BOLTS IN CONCRETE CONSTRUCTION SHOULD BE FAVORED. DO NOT USE SCREW ANCHORS IN DIRECT TENSION.
- EQUIPMENT VENDOR OR DESIGNATED REPRESENTATIVES ARE IN NO WAY RESPONSIBLE FOR THE DESIGN OR INSTALLATION OF THE SUPPORT STRUCTURE FOR ANY IMAGING EQUIPMENT. THIS IS THE RESPONSIBILITY OF THE PURCHASER OR PURCHASER'S CONTRACTOR.
- PURCHASER OR HIS CONTRACTOR IS RESPONSIBLE FOR LOCATING AND MARKING ALL POST TENSION CABLES OR OTHER OBSTACLES THAT MAY INTERFERE WITH PROPER LOCATION AND INSTALLATION OF REQUIRED DIAGNOSTIC IMAGING EQUIPMENT FLOOR ANCHORS. ANY OBSTRUCTIONS OR CABLES NOTED NEAR THE AREA OF ANCHOR POINTS ARE TO BE MARKED AND INDICATED BEFORE INSTALLATION OF THE DIAGNOSTIC IMAGING SYSTEM AND RELATED EQUIPMENT.
- ANY NOTED POSSIBLE OBSTRUCTIONS OR CABLES THAT MAY REQUIRE REPOSITIONING OR MODIFICATION OF THE DIAGNOSTIC IMAGING SYSTEM AND RELATED EQUIPMENT MUST BE COORDINATED WITH THE AUTHORIZED EQUIPMENT VENDOR PERSONNEL OR DESIGNATED REPRESENTATIVE PRIOR TO INSTALLATION.

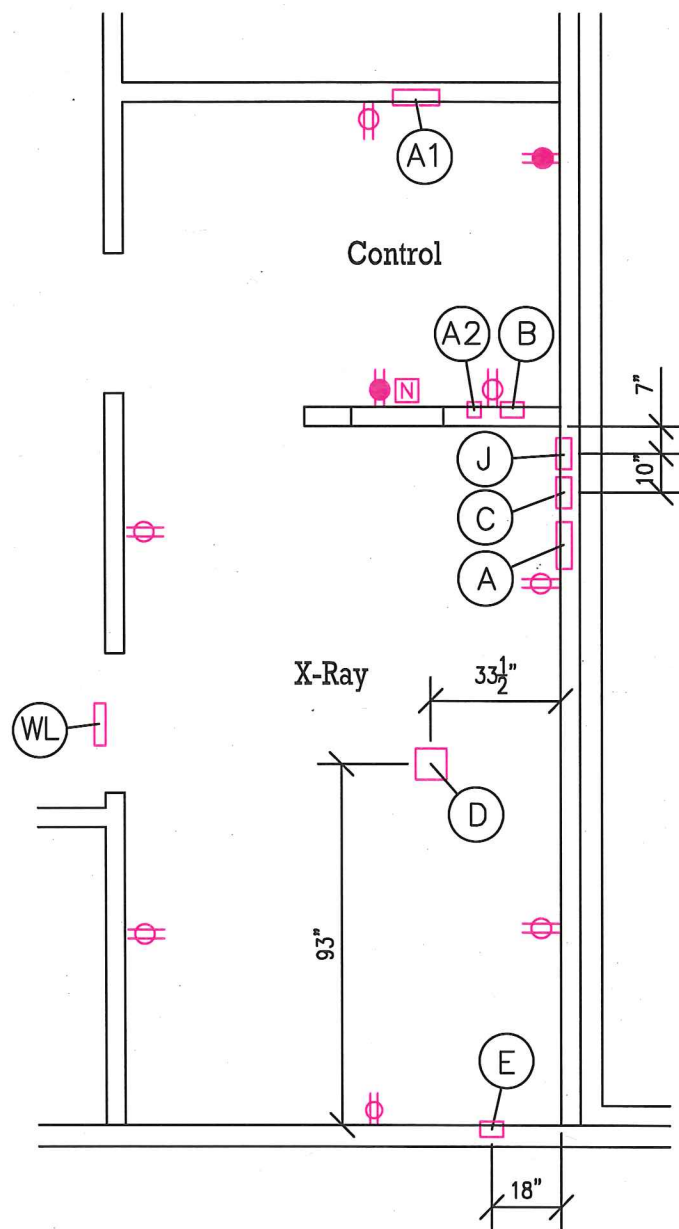
CUSTOMER:  
**MedSmith**  
Fort Worth, TX

Structural Notes

THESE DRAWINGS ARE SUBMITTED TO SUGGEST LOCATION OF ALL DIAGNOSTIC IMAGING EQUIPMENT AND ASSOCIATED APPARATUS, ELECTRICAL WIRING DETAILS, AND ROOM ARRANGEMENTS. IN PREPARING THIS DRAWING, EVERY EFFORT HAS BEEN MADE TO CONFORM DETAILS TO THE ACTUAL EQUIPMENT SPECIFIED. THESE DRAWINGS ARE NOT TO BE USED FOR CONSTRUCTION PURPOSES. THE PREPARED CONSTRUCTION DRAWINGS TO BE PREPARED BY PURCHASER'S ARCHITECT OR CONTRACTOR.



DRAWN BY:  
**D. CROSBY**  
DATE:  
**07/02/18**  
DWG. NO.  
**18259**  
SHEET:  
**S2**



NOTE: ALL FLUSH MOUNTED BOXES/ENCLOSURES  
TO HAVE OVERSIZED COVERS TO CONCEAL  
OPENING AROUND BOX.

115 VAC, 15 Amp, Convenience Outlet

115 VAC, 15 Amp, Dedicated Outlet

RJ-45 Network Connection w/Cat. 5 Cable Outlet  
(consult with local representative for exact configuration)



## ELECTRICAL LEGEND

CFCI.....CONTRACTOR FURNISHED AND CONTRACTOR INSTALLED  
OFCI.....OWNER FURNISHED AND OWNER OR CONTRACTOR INSTALLED  
OFOI.....OWNER FURNISHED AND OWNER OR VENDOR INSTALLED

	ITEM	DESCRIPTION												
CFCI	(A)	MAIN CIRCUIT BREAKER IN APPROVED FLUSH MOUNTED NEMA ENCLOSURE WITH NEUTRAL AND GROUND ACCESSORIES. LOCATION INDICATED IS A SUGGESTION ONLY. EXACT LOCATION TO BE DETERMINED ON SITE AND PER LOCAL/NATIONAL CODE REQUIREMENTS.  CONTRACTOR TO SUPPLY AND INSTALL HARD WIRES AS SHOWN ON SHEET "E3" OR "E4" FROM CIRCUIT BREAKER TO LOCATION "C".												
CFCI	(A1)	120/208-240 VAC SINGLE PHASE, SN LOAD CENTER WITH SINGLE MAIN BREAKER. LOCATION INDICATED IS A SUGGESTION ONLY. EXACT LOCATION TO BE DETERMINED ON SITE AND PER LOCAL/NATIONAL CODE REQUIREMENTS. LOAD CENTER TO CONTAIN BREAKERS WITH RATINGS AS FOLLOWS:  <table><tr><td><u>BRANCH CIRCUIT</u></td><td><u>BOX LOCATION</u></td><td><u>120 VAC</u></td><td><u>208-240 VAC</u></td></tr><tr><td>TABLE</td><td>"D"</td><td>20 AMP</td><td></td></tr><tr><td>TUBESTAND</td><td>"C"</td><td>15 AMP</td><td></td></tr></table> CONTRACTOR TO SUPPLY AND INSTALL HARD WIRES FROM CIRCUIT BREAKER IN LOAD CENTER TO "BOX LOCATION" AND LABEL ACCORDINGLY.	<u>BRANCH CIRCUIT</u>	<u>BOX LOCATION</u>	<u>120 VAC</u>	<u>208-240 VAC</u>	TABLE	"D"	20 AMP		TUBESTAND	"C"	15 AMP	
<u>BRANCH CIRCUIT</u>	<u>BOX LOCATION</u>	<u>120 VAC</u>	<u>208-240 VAC</u>											
TABLE	"D"	20 AMP												
TUBESTAND	"C"	15 AMP												
CFCI	(A2)	REMOTE SWITCH FOR OPERATION OF SHUNT TRIP FEATURE ON MAIN BREAKER "A". PROVIDE MUSHROOM TYPE "EMERGENCY OFF" RED BUTTON. LOCATION INDICATED IS A SUGGESTION ONLY. EXACT LOCATION TO BE DETERMINED ON SITE AND PER LOCAL/NATIONAL CODE REQUIREMENTS.												
CFCI	(B)	6" x 6" x 4" DEEP JUNCTION BOX. SPLIT REMOVABLE COVER SHALL CONTAIN A 2" GROMMETED OPENING. LOCATE COVER 6" BELOW COUNTER TOP. PROVIDE GROMMETED OPENING IN COUNTER TOP FOR CABLE ACCESS TO EQUIPMENT.												
CFCI	(C)	8" x 8" x 4" DEEP JUNCTION BOX. SPLIT REMOVABLE COVER SHALL CONTAIN A 2" GROMMETED OPENING. LOCATE COVER 12" ABOVE FINISHED FLOOR. PROVIDE 4' SEALTITE WITH 90° CONNECTORS AT EACH END. CONNECT TO "C" AND LEAVE 6' WIRE TAILS TO EQUIPMENT.												
CFCI	(D)	8" x 8" x 4" DEEP JUNCTION BOX. SPLIT REMOVABLE COVER SHALL CONTAIN A 2" GROMMETED OPENING. LOCATE COVER FLUSH IN FINISHED FLOOR.												
CFCI	(E)	6" x 6" x 4" DEEP JUNCTION BOX. SPLIT REMOVABLE COVER SHALL CONTAIN A 2" GROMMETED OPENING. LOCATE COVER 43" ABOVE FINISHED FLOOR.												
CFCI	(J)	8" x 8" x 4" DEEP JUNCTION BOX. SPLIT REMOVABLE COVER SHALL CONTAIN A 2" GROMMETED OPENING. LOCATE COVER 12" ABOVE FINISHED FLOOR.												
CFCI	(WL)	WARNING LIGHT. CONTRACTOR TO SUPPLY AND INSTALL LIGHT ABOVE ENTRANCE DOOR, IF REQUIRED BY CODE, AND RUN 3 #14 TO "C". LIGHT POWER TO BE SUPPLIED BY CONTRACTOR FROM SOURCE OTHER THAN X-RAY EQUIPMENT.												

CUSTOMER:

MedSmith

Fort Worth, TX

Electrical Layout / Legend

THESE DRAWINGS ARE SUBMITTED TO SUGGEST LOCATION OF ALL DIAGNOSTIC IMAGING EQUIPMENT AND ASSOCIATED APPARATUS, ELECTRICAL WIRING DETAILS, AND ROOM ARRANGEMENTS. IN PREPARING THIS DRAWING, EVERY EFFORT HAS BEEN MADE TO CONFORM TO THE DETAILS TO THE ACTUAL EQUIPMENT EXPECTED TO BE INSTALLED. THE CONTRACTOR SHALL BE RESPONSIBLE FOR VERIFYING THE ACTUAL CONSTRUCTION PURPOSES, AND THE PREPARED CONSTRUCTION DRAWINGS TO BE PREPARED BY PURCHASER'S ARCHITECT OR CONTRACTOR.



DRAWN BY:

D. CROSBY

DATE:

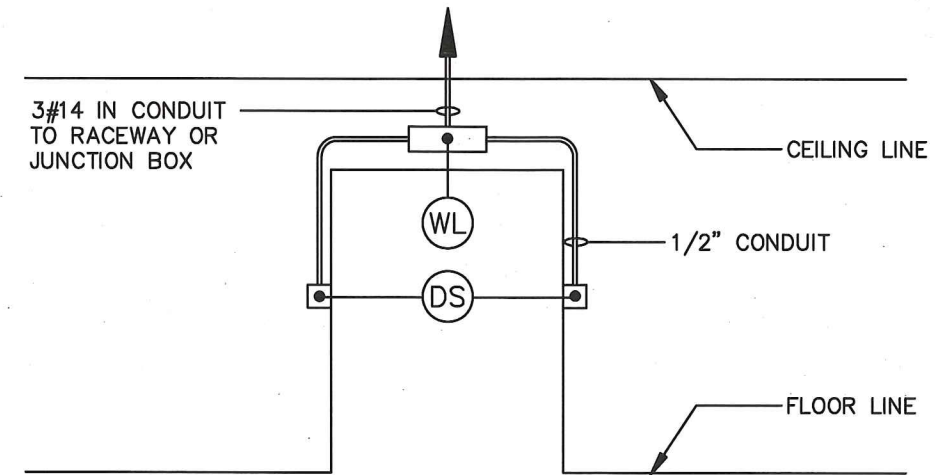
07/02/18

DWG. NO.

18259

SHEET:

E1



**NOTES:**

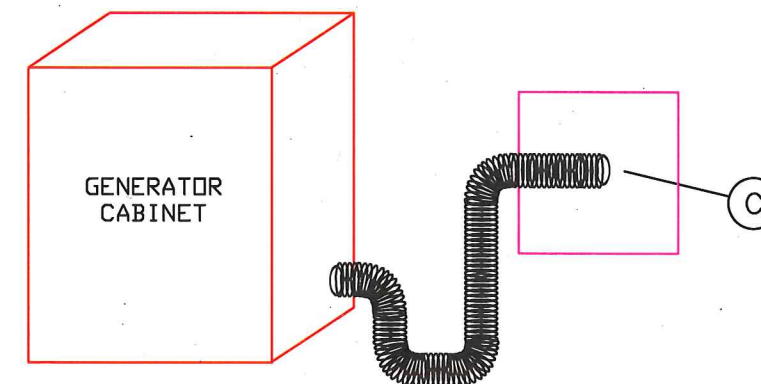
- DOORSWITCH TO BE LOCATED ON HINGE SIDE OF DOOR JAMB. SWITCH TO HAVE NORMALLY OPEN CONTACT (SWITCH CLOSSES WHEN DOOR CLOSSES).
- IN CASE OF A DOUBLE JAMB, ONE DOOR SWITCH SHOULD BE LOCATED ON EACH SIDE.
- SEE ELECTRICAL LAYOUT FOR DOOR SWITCH/WARNING LIGHT LOCATION IN ROOM.
- MAXIMUM 25 WATT INCANDESCENT BULBS RECOMMENDED FOR WARNING LIGHT.

CFCI

**DOOR SWITCH / WARNING LIGHT DETAIL**

NO SCALE

SEALTITE CONNECTION FROM "C":



CFCI

**TYPICAL X-RAY GENERATOR CABINET CONNECTION DETAIL**

NO SCALE

CUSTOMER:  
**MedSmith** Fort Worth, TX  
Electrical Details

THESE DRAWINGS ARE SUBMITTED TO SUGGEST LOCATION OF ALL DIAGNOSTIC IMAGING EQUIPMENT AND ASSOCIATED APPARATUS; ELECTRICAL WIRING DETAILS, AND ROOM ARRANGEMENTS. IN PREPARING THIS DRAWING, EVERY EFFORT HAS BEEN MADE TO CONFORM TO THE ACTUAL EQUIPMENT EXPECTED TO BE INSTALLED. HOWEVER, THESE DRAWINGS ARE NOT TO BE USED FOR ANY CONSTRUCTION OR REVISIONS THEREOF WITHOUT THE ARCHITECT'S RESPONSIBILITY FOR DAMAGES RESULTING THEREFROM. CONTRACTOR'S DRAWINGS TO BE PREPARED BY PURCHASER'S ARCHITECT OR CONTRACTOR.

**MXR**  
MERRY X-RAY CORPORATION

DRAWN BY:  
**D. CROSBY**  
DATE:  
07/02/18  
DWG. NO.  
18259  
SHEET:  
**E2**

INCOMING POWER SPECIFICATIONS:

TXR 40 KW GENERATOR:

SELECT PROPER INCOMING VOLTAGE, DISTRIBUTION TRANSFORMER, WIRE SPECIFICATIONS, AND MAIN CIRCUIT BREAKER FROM THIS CHART BASED UPON AVAILABLE POWER SOURCE AT THE FACILITY

SINGLE PHASE INCOMING VOLTAGE	MAIN FACILITY DIST XFMR	INCOMING WIRE SIZE ≤50' ≤100' ≤200'	LINE IMPEDANCE	X-RAY ROOM MAIN BREAKER
208 VAC	50 KVA	#00 300MCM 600MCM	0.035 OHMS	125 AMP
240 VAC	50 KVA	#0 #0000 400MCM	0.046 OHMS	100 AMP

NOTE: MINIMUM #6 AWG GROUND WIRE REQUIRED  
VOLTAGE FLUCTUATION ±10% FULL LOAD  
FOR LINES AT 210 VAC OR BELOW, AN AUXILIARY BOOST TRANSFORMER IS REQUIRED TO ADEQUATE THE LINE VOLTAGE TO THE GENERATOR INPUT.  
ALL WIRES TO BE THHN OR TFFN STRANDED COPPER THERMOPLASTIC 600 VOLT OR EQUIVALENT, UNLESS OTHERWISE NOTED.  
MAXIMUM LENGTH FROM DISTRIBUTION TRANSFORMER TO ROOM MAIN BREAKER NOT TO EXCEED 200'.

CONTRACTOR SUPPLIED AND INSTALLED WIRING FROM MAIN CIRCUIT BREAKER "A" IN X-RAY ROOM TO X-RAY GENERATOR "C":

SELECT PROPER WIRE SIZE BASED UPON INCOMING VOLTAGE TO MAIN CIRCUIT BREAKER "A" IN X-RAY ROOM

DISTANCE	208 VAC	240 VAC
0'-15'	#1	#1

NOTE: IF LENGTH OF RUN FROM "A" TO "C" EXCEEDS 15', INCREASE WIRE SIZE PROPORTIONALLY

SPECIAL GROUNDING:

A SPECIAL GROUNDING SYSTEM IS REQUIRED IN DIAGNOSTIC ROOMS BY SOME STATE AND LOCAL CODES. IT IS STRONGLY RECOMMENDED IN AREAS WHERE ELECTRICALLY SUSCEPTIBLE PATIENTS MAY BE EXAMINED OR TREATED UNDER PRESENT, FUTURE, OR EMERGENCY CONDITIONS. CONSULT THE GOVERNING ELECTRICAL CODE AND CONFER WITH APPROPRIATE HOSPITAL ADMINISTRATIVE PERSONNEL TO DETERMINE THE AREAS REQUIRING THIS GROUNDING SYSTEM. IF SUCH A SYSTEM IS REQUIRED, CONTRACTOR TO DESIGN AND INSTALL GROUNDING SYSTEM AND INCLUDE ALL METAL OBJECTS AND FIXTURES, OTHER THAN DIAGNOSTIC X-RAY EQUIPMENT.

IMPORTANT POWER NOTES:

POWER LINES FOR X-RAY SYSTEMS SHALL BE DEDICATED LINES RUN FROM NEAREST HOSPITAL MAIN DISTRIBUTION TRANSFORMER. UNDER NO CIRCUMSTANCES SHALL ANY OTHER ELECTRICAL EQUIPMENT BE CONNECTED TO THESE LINES NOW OR IN THE FUTURE.

LINE REQUIREMENTS:

- A. NO TRANSIENTS (IMPULSES FROM 0.5 TO 800 MICROSECONDS) THAT EXCEED 30% OF NOMINAL PEAK LINE VOLTAGE AS MEASURED BY A DRANETZ POWER LINE ANALYZER (MODEL 606B OR EQUIVALENT) WITH THE SYSTEM IN STANDBY SHALL OCCUR.
- B. TRANSIENTS EQUAL TO OR LESS THAN 30% OF NOMINAL PEAK LINE VOLTAGE SHALL NOT OCCUR MORETHAN ONCE PER HOUR OR EXCEED MORE THAN 12 IMPULSES PER 24-HOUR PERIOD.
- C. 50 KVA, 208-240 VAC, SINGLE PHASE, 60 HZ, INCOMING LINE TO MAIN DISCONNECT "A" WITH ±10% VOLTAGE REGULATION UNDER INTERMITTENT, NO LOAD TO FULL LOAD CONDITIONS REQUIRED.
- D. ELECTRICAL GROUNDING RESISTANCE LESS THAN 10 OHMS.

IF ANY OF THE ABOVE POWER SPECIFICATIONS REGARDING LINE TRANSIENTS, NOMINAL LINE VOLTAGE, AND VOLTAGE REGULATION CANNOT BE MET, THE FOLLOWING CORRECTIVE ACTION MUST BE TAKEN:

- A. NOISE AND TRANSIENTS  
TRANSIENTS AND NOISE SHALL BE REMOVED BY THE USE OF A TRANSIENT SUPPRESSOR AND/OR ISOLATION TRANSFORMER (EITHER FARADAY TYPE OR ULTRA-HIGH TYPE) DEPENDING ON THE SEVERITY OF THE PROBLEM.
- B. NOMINAL LINE VOLTAGE  
A LINE MATCHING TRANSFORMER MUST BE UTILIZED.
- C. VOLTAGE REGULATION  
A REGULATION TRANSFORMER OR LINE CONDITIONER DEPENDING ON THE SEVERITY OF THE PROBLEM SHALL BE EMPLOYED TO MAINTAIN LINE VOLTAGE WITHIN 5% UNDER-INTERMITTENT, NO LOAD TO FULLLOAD CONDITIONS.
- D. GROUNDING  
DEPENDING UPON THE SEVERITY OF THE PROBLEM, INCREASE GROUND RUNS TO FACILITY DISTRIBUTIONPOINT OR IN SEVERE CONDITIONS, NEW GROUND RODS TO BE INSTALLED AS REQUIRED.



DRAWN BY:  
D. CROSBY  
DATE:  
07/02/18  
DWG. NO.  
18259  
SHEET:  
E3

CUSTOMER:  
MedSmith  
Fort Worth, TX  
Electrical Notes / Power Specifications

THESE DRAWINGS ARE SUBMITTED TO SUGGEST LOCATION OF ALL DIAGNOSTIC IMAGING EQUIPMENT AND ASSOCIATED APPARATUS; ELECTRICAL WIRING DETAILS AND ROOM ARRANGEMENTS. IN PREPARING THIS DRAWING, EVERY EFFORT HAS BEEN MADE TO CONFORM TO THE ACTUAL EQUIPMENT. THE USER IS RESPONSIBLE FOR VERIFYING THE ACTUAL CONSTRUCTION PURPOSES AND THE PREPARED CANNOT ACCEPT ANY RESPONSIBILITY FOR DAMAGES RESULTING THEREFROM. CONSTRUCTION DRAWINGS TO BE PREPARED BY PURCHASER'S ARCHITECT OR CONTRACTOR.

INCOMING POWER SPECIFICATIONS:

TXR 40 KW GENERATOR:

SELECT PROPER INCOMING VOLTAGE, DISTRIBUTION TRANSFORMER, WIRE SPECIFICATIONS, AND MAIN CIRCUIT BREAKER FROM THIS CHART BASED UPON AVAILABLE POWER SOURCE AT THE FACILITY

THREE PHASE INCOMING VOLTAGE	MAIN FACILITY DIST XFMR	INCOMING WIRE SIZE			LINE IMPEDANCE	X-RAY ROOM MAIN BREAKER
		≤50'	≤100'	≤200'		
208 VAC	50 KVA	#1	#000	350MCM	0.060 OHMS	70 AMP
240 VAC	50 KVA	#2	#00	250MCM	0.079 OHMS	60 AMP
480 VAC	50 KVA	#8	#4	#2	0.317 OHMS	50 AMP

NOTE: MINIMUM #6 AWG GROUND WIRE REQUIRED  
VOLTAGE FLUCTUATION ±10% FULL LOAD

FOR LINES AT 210 VAC OR BELOW, AN AUXILIARY BOOST TRANSFORMER IS REQUIRED TO ADEQUATE THE LINE VOLTAGE TO THE GENERATOR INPUT.

ALL WIRES TO BE THHN OR TFFN STRANDED COPPER THERMOPLASTIC 600 VOLT OR EQUIVALENT, UNLESS OTHERWISE NOTED.

MAXIMUM LENGTH FROM DISTRIBUTION TRANSFORMER TO ROOM MAIN BREAKER NOT TO EXCEED 200'.

CONTRACTOR SUPPLIED AND INSTALLED WIRING FROM MAIN CIRCUIT BREAKER "A" IN X-RAY ROOM TO X-RAY GENERATOR "C":

SELECT PROPER WIRE SIZE BASED UPON INCOMING VOLTAGE TO MAIN CIRCUIT BREAKER "A" IN X-RAY ROOM

DISTANCE	208 VAC	240 VAC	480 VAC
0'-50'	#4	#4	#4

NOTE: IF LENGTH OF RUN FROM "A" TO "C" EXCEEDS 50', INCREASE WIRE SIZE PROPORTIONALLY

SPECIAL GROUNDING:

A SPECIAL GROUNDING SYSTEM IS REQUIRED IN DIAGNOSTIC ROOMS BY SOME STATE AND LOCAL CODES. IT IS STRONGLY RECOMMENDED IN AREAS WHERE ELECTRICALLY SUSCEPTIBLE PATIENTS MAY BE EXAMINED OR TREATED UNDER PRESENT, FUTURE, OR EMERGENCY CONDITIONS. CONSULT THE GOVERNING ELECTRICAL CODE AND CONFER WITH APPROPRIATE HOSPITAL ADMINISTRATIVE PERSONNEL TO DETERMINE THE AREAS REQUIRING THIS GROUNDING SYSTEM. IF SUCH A SYSTEM IS REQUIRED, CONTRACTOR TO DESIGN AND INSTALL GROUNDING SYSTEM AND INCLUDE ALL METAL OBJECTS AND FIXTURES, OTHER THAN DIAGNOSTIC X-RAY EQUIPMENT.

IMPORTANT POWER NOTES:

POWER LINES FOR X-RAY SYSTEMS SHALL BE DEDICATED LINES RUN FROM NEAREST HOSPITAL MAIN DISTRIBUTION TRANSFORMER. UNDER NO CIRCUMSTANCES SHALL ANY OTHER ELECTRICAL EQUIPMENT BE CONNECTED TO THESE LINES NOW OR IN THE FUTURE.

LINE REQUIREMENTS:

- A. NO TRANSIENTS (IMPULSES FROM 0.5 TO 800 MICROSECONDS) THAT EXCEED 30% OF NOMINAL PEAK LINE VOLTAGE AS MEASURED BY A DRANETZ POWER LINE ANALYZER (MODEL 606B OR EQUIVALENT) WITH THE SYSTEM IN STANDBY SHALL OCCUR.
- B. TRANSIENTS EQUAL TO OR LESS THAN 30% OF NOMINAL PEAK LINE VOLTAGE SHALL NOT OCCUR MORETHAN ONCE PER HOUR OR EXCEED MORE THAN 12 IMPULSES PER 24-HOUR PERIOD.
- C. 50 KVA, 208-240 OR 480 VAC, THREE PHASE, 60 HZ, INCOMING LINE TO MAIN DISCONNECT "A" WITH ±10% VOLTAGE REGULATION UNDER INTERMITTENT, NO LOAD TO FULL LOAD CONDITIONS REQUIRED.
- D. ELECTRICAL GROUNDING RESISTANCE LESS THAN 10 OHMS.

IF ANY OF THE ABOVE POWER SPECIFICATIONS REGARDING LINE TRANSIENTS, NOMINAL LINE VOLTAGE, AND VOLTAGE REGULATION CANNOT BE MET, THE FOLLOWING CORRECTIVE ACTION MUST BE TAKEN:

- A. NOISE AND TRANSIENTS  
TRANSIENTS AND NOISE SHALL BE REMOVED BY THE USE OF A TRANSIENT SUPPRESSOR AND/OR ISOLATION TRANSFORMER (EITHER FARADAY TYPE OR ULTRA-HIGH TYPE) DEPENDING ON THE SEVERITY OF THE PROBLEM.
- B. NOMINAL LINE VOLTAGE  
A LINE MATCHING TRANSFORMER MUST BE UTILIZED.
- C. VOLTAGE REGULATION  
A REGULATION TRANSFORMER OR LINE CONDITIONER DEPENDING ON THE SEVERITY OF THE PROBLEM SHALL BE EMPLOYED TO MAINTAIN LINE VOLTAGE WITHIN 5% UNDER INTERMITTENT, NO LOAD TO FULLLOAD CONDITIONS.
- D. GROUNDING  
DEPENDING UPON THE SEVERITY OF THE PROBLEM, INCREASE GROUND RUNS TO FACILITY DISTRIBUTIONPOINT OR IN SEVERE CONDITIONS, NEW GROUND RODS TO BE INSTALLED AS REQUIRED.

CUSTOMER:

Fort Worth, TX

MedSmith

Electrical Notes / Power Specifications

THESE DRAWINGS ARE SUBMITTED TO SUGGEST LOCATION OF ALL DIAGNOSTIC IMAGING EQUIPMENT AND ASSOCIATED APPARATUS, ELECTRICAL WIRING DETAILS, AND ROOM ARRANGEMENTS. IN PREPARING THIS DRAWING, EVERY EFFORT HAS BEEN MADE TO CORRELATE THE LOCATION OF EQUIPMENT WITH THE SPECIFIED LOCATION OF THE EQUIPMENT. HOWEVER, THE CONTRACTOR SHALL BE RESPONSIBLE FOR THE ACTUAL CONSTRUCTION OF THE EQUIPMENT AND THE PREPARER CANNOT ACCEPT ANY RESPONSIBILITY FOR DAMAGES RESULTING THEREFROM. CONSTRUCTION DRAWINGS TO BE PREPARED BY PURCHASER'S ARCHITECT OR CONTRACTOR.

MXR

MERRY X-RAY CORPORATION

DRAWN BY:

D. CROSBY

DATE:

07/02/18

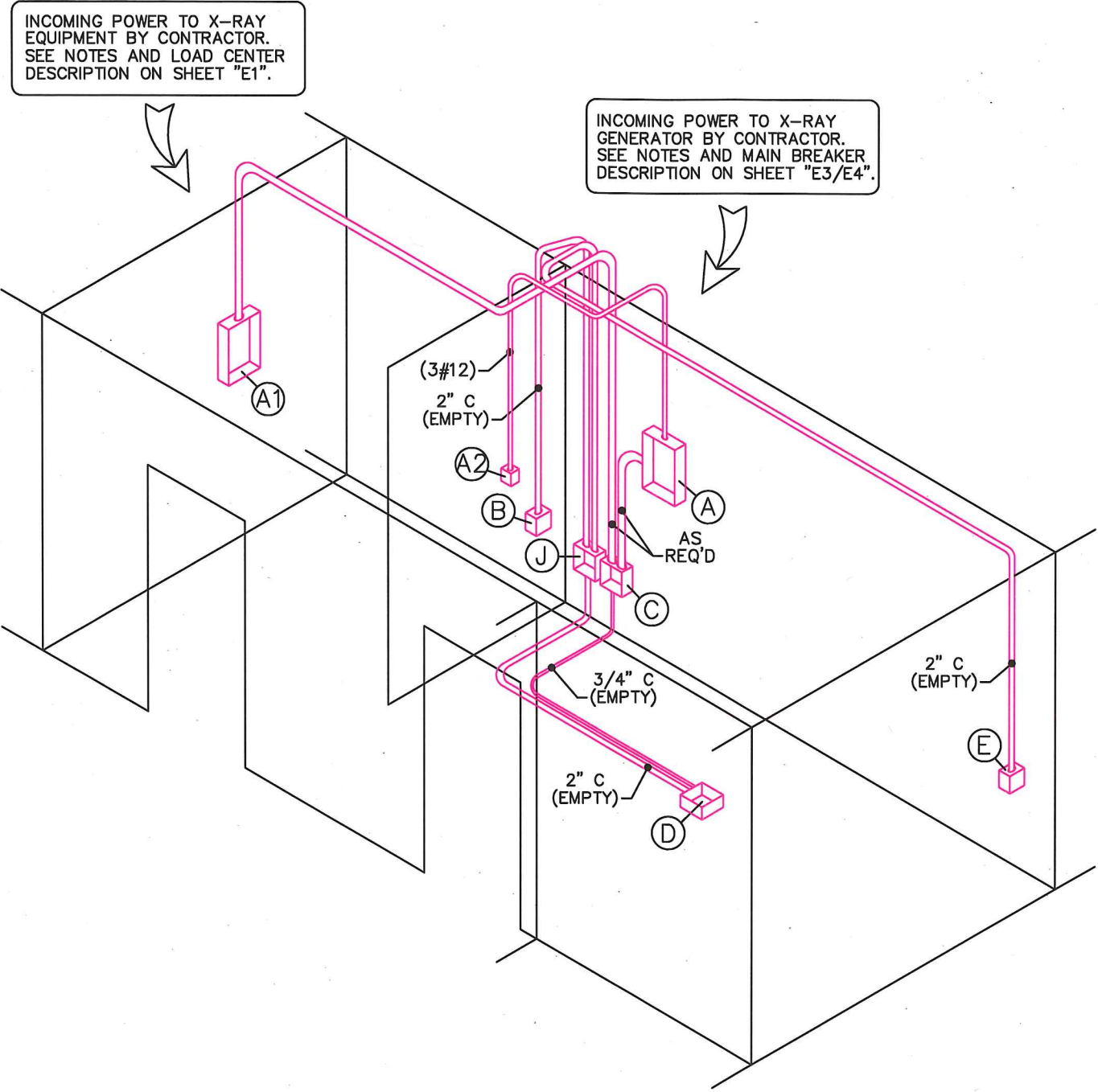
DWG. NO.

18259

SHEET:

E4

SCHEMATIC RISER DIAGRAM



NOTE: CONDUIT RUNS SHOWN SCHEMATICALLY. BUILDING CONDITIONS WILL DETERMINE ACTUAL CONDUIT RUNS. KEEP ALL RUNS AS SHORT AS POSSIBLE. ALL CONDUIT SIZES MUST MEET LOCAL AND NATIONAL CODE REQUIREMENTS.

NO SCALE

CUSTOMER:  
**MedSmith**  
Fort Worth, TX  
Schematic Riser Diagram

THESE DRAWINGS ARE SUBMITTED TO SUGGEST LOCATION OF ALL DIAGNOSTIC IMAGING EQUIPMENT AND ASSOCIATED APPARATUS, ELECTRICAL WIRING DETAILS, AND ROOM ARRANGEMENTS. IN PREPARING THIS DRAWING, EVERY EFFORT HAS BEEN MADE TO CORRELATE THE DRAWING WITH THE ACTUAL CONDITIONS AS REPORTED TO BE INSTALLED. HOWEVER, THESE DRAWINGS ARE NOT TO BE USED FOR ANY PURPOSES OTHER THAN THE PURPOSES FOR WHICH THEY WERE PREPARED. THE PREPARED CANNOT ACCEPT ANY RESPONSIBILITY FOR DAMAGES RESULTING THEREFROM. CONSTRUCTION DRAWINGS TO BE PREPARED BY PURCHASER'S ARCHITECT OR CONTRACTOR.



DRAWN BY:  
**D. CROSBY**  
DATE:  
07/02/18  
DWG. NO.  
18259  
SHEET:  
**E5**