

PERMIT REQUEST PROPERTY ADDRESS 460 Keller Parkway, Suite B Keller, Texas

Legal Description: Lot(s) 1R Block(s): A Subdivision Name: Shops at Cindy Addition

Terrace Retreat Salon & Day Spa opened its' first location in Colleyville, Texas in August 1995, setting the trend for the emerging Day Spa Industry in Northeast Tarrant County. In 1998 when Southlake Town Square in Southlake began development. Owner, Anne Adams was asked to add a second location by the Southlake Town Square Executive Management. Terrace Retreat opened two locations in the Town Square. A Salon, the first Aveda Lifestyle Salon in Tarrant County, as well as a Day Spa and later adding a Med Spa in 2007, again, were setting the trend for this industry. In 2007, Terrace Retreat was welcomed and invited to join the Southlake Hilton Hotel by Southlake Town Square Executive Management and Owner Partner in the Hilton Hotel group. In October 2009, Terrace Retreat had been in Southlake Town Square 10 years, sold Town Square locations to an Aveda Salon group expanding its' locations in Tarrant County. In July 2011 the original Colleyville location relocated to the Terrace Retreat Spa at the Hilton Hotel.

In July 2018, Anne Marie Adams purchased the Avalon Designs Salon, now an Aveda Concept Salon located at 251 Town Center Lane, Keller Town Center. She recently looked into relocating her Day Spa to 460 Keller Parkway; Suite B, located in the Shops at Cindy Court Addition. Ms. Adams is relocating her residence to Keller, Texas.

The location at 460 Keller Parkway, Suite B prior was a skin care business, currently has approximately 4 treatment rooms and contains approximately 1250 square feet. A salon next door to this location is ideal for the two owners to work together. This location is very suitable for the needs of Terrace Retreat's relocation to Keller. Terrace Retreat Spa Salon plans retail the Aveda brand, utilizing the Aveda professional product line to offer Skincare Services, which include Facials and Waxing Services, Natural Nail Services, and Massage Services, which would include 30, 50 and 80 minute treatments of Swedish, Deep Tissue and Stone Therapy Therapeutic protocols.

In addition, Terrace Retreat offers Endermologie services. Endermologie utilizes a machine that has two rollers, which roll over the skin's top layer to create a fold. It is through this folding action that the connective tissue stretches to reduce cellulite's appearance. According to Cellulite Treatment, this machine reduces cellulite but cannot remove cellulite permanently. Additional benefits of the machine are reduction of muscular pain and muscle spasms.

It is the hope of Anne Marie Adams and her longtime and dedicated employees of Terrace Retreat Salon & Day Spa, several of whom have been with Terrace Retreat since 1995, to continue their commitment to excellence in service of their guests providing personalized nurturing services in a relaxing environment.

Terrace Retreat Spa & Salon

See and feel the Aveda difference. The latest haircuts, styling and color are just the start. During your visit, enjoy signature treatments that care for you and the Earth – from a cup of comforting tea to a skin care consultation or makeup touch-up. Free with any salon service.

ADDRESS

1400 Plaza Place, Southlake, Texas 76092 (located inside the Hilton Hotel)

PHONE

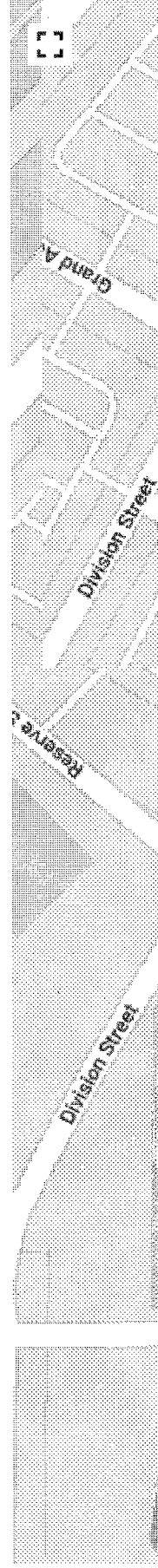
817-788-0800

STORE HOURS

Sun-Mon 10-6, Tues-Wed 9-7, Th 9-8, Fri-Sat 9-6

WEBSITE

<http://www.terraceretreat.com/>

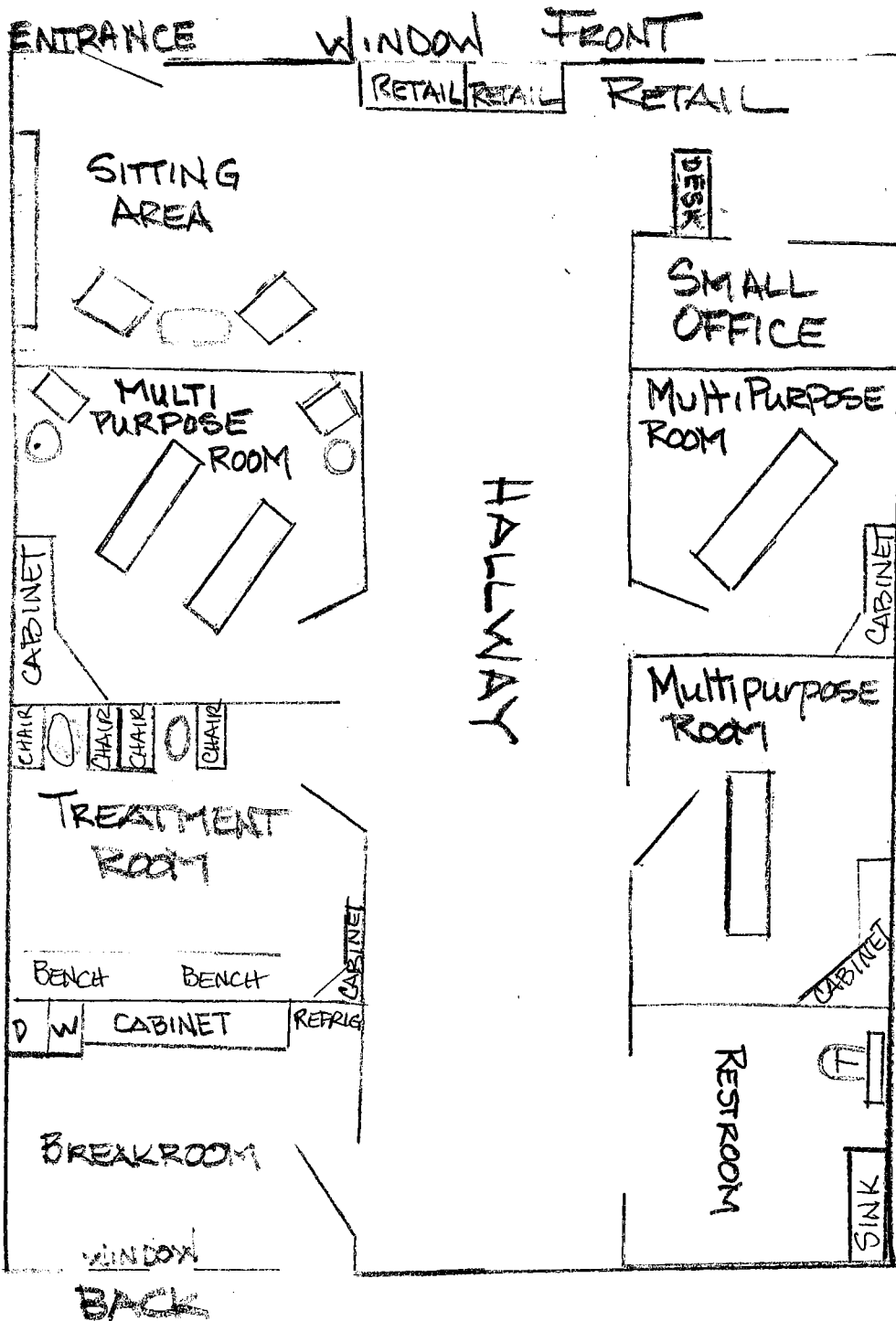


DRIVEWAY

TRASH

PARKING LOT

SPACE 460 B



CINDY COURT

PARKING LOT

DRIVEWAY

KELLER PARKWAY