

Keller Development Corporation

February 12, 2019



Discuss additional funding needs for current Capital Projects.

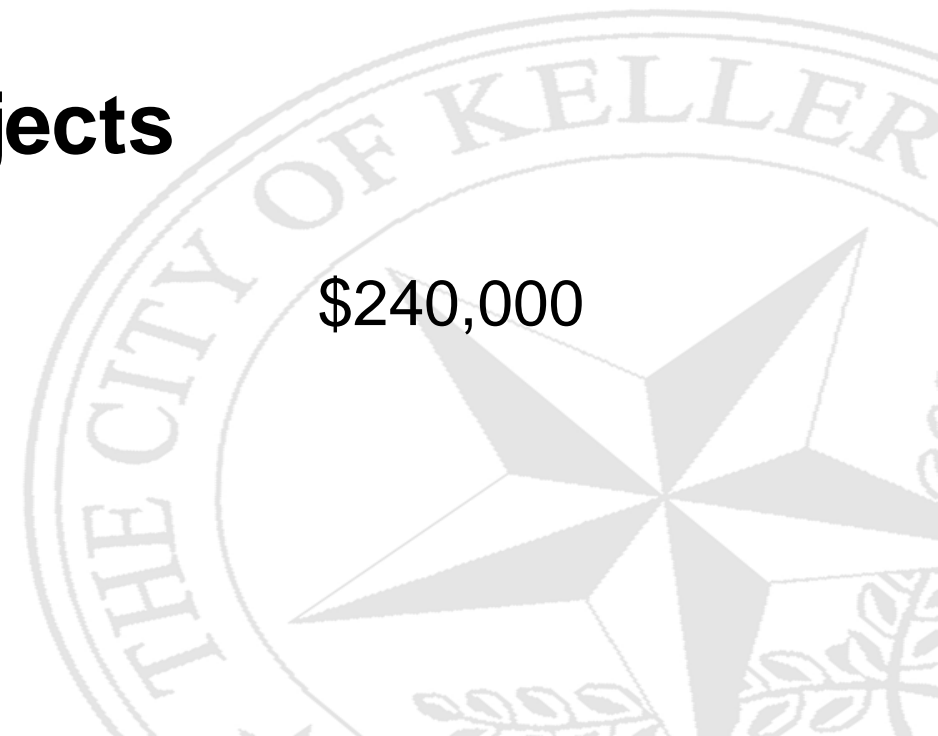


FY 2016/17 Capital Projects

Keller Smithfield Activity Node Parking Lot Expansion	\$100,000
---	-----------

FY 2018/19 Capital Projects

Bear Creek Park Restroom/Storage Facility	\$240,000
---	-----------



Keller Smithfield Activity Node Parking Lot



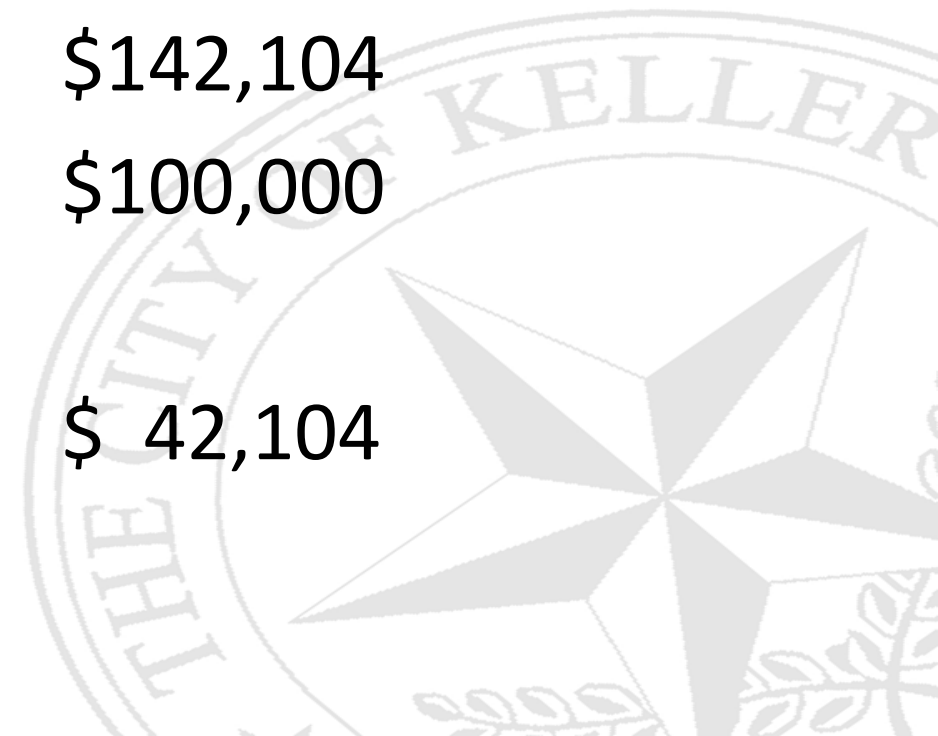


Bid Tab

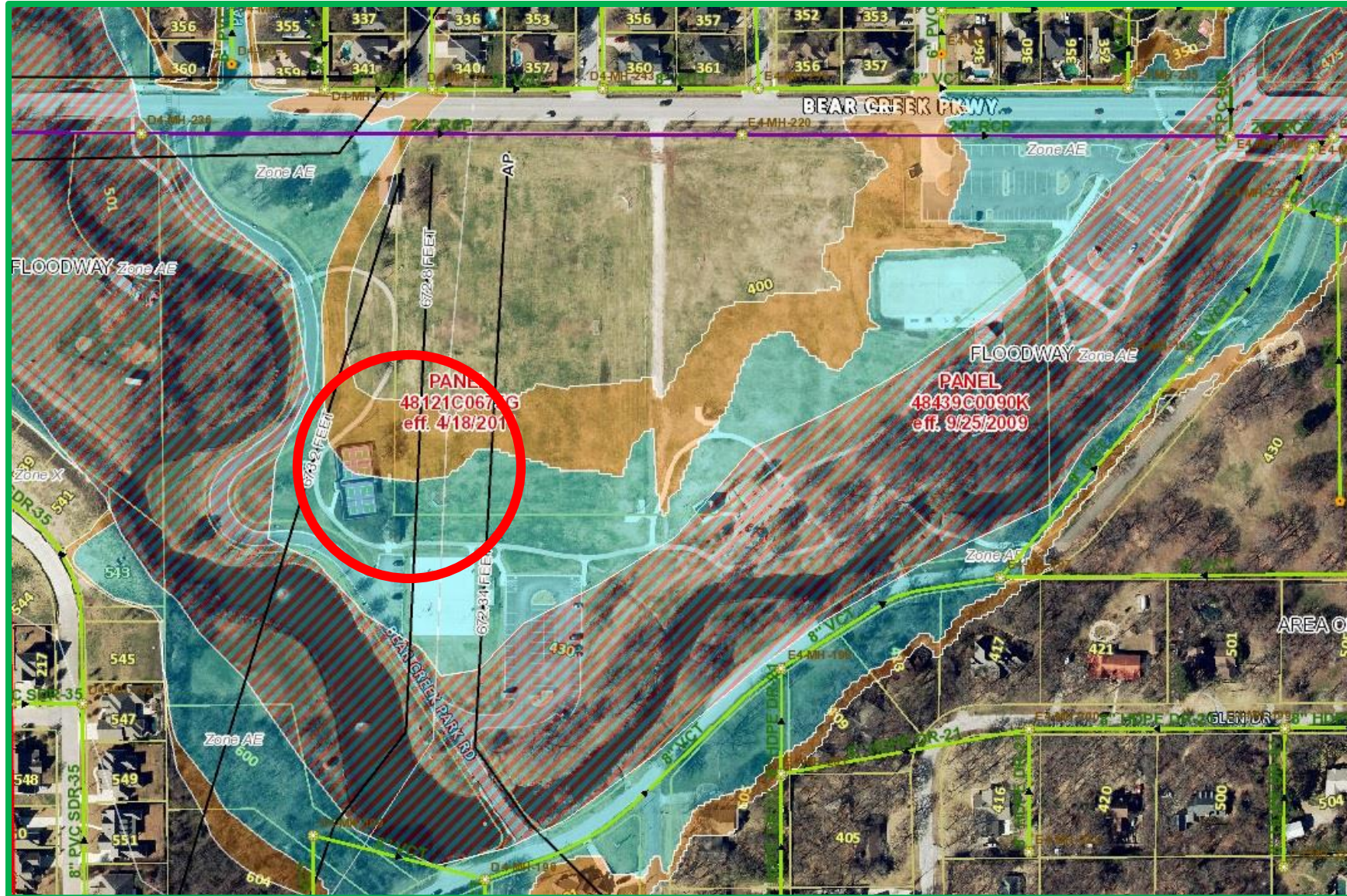
Bidder	Base Bid
Cole Construction	\$121,099.00
MHB Construction	\$141,682.00
Quick Set Concrete	\$149,637.00
Oakhill Concrete	\$174,016.00
CC Zamora Construction	\$178,130.00
VA Construction Inc.	\$189,400.05
North Texas Contracting	\$189,420.00
Cam-Crete Contracting	\$204,000.00
North Rock Construction	\$214,856.33
2L Construction	\$247,957.00

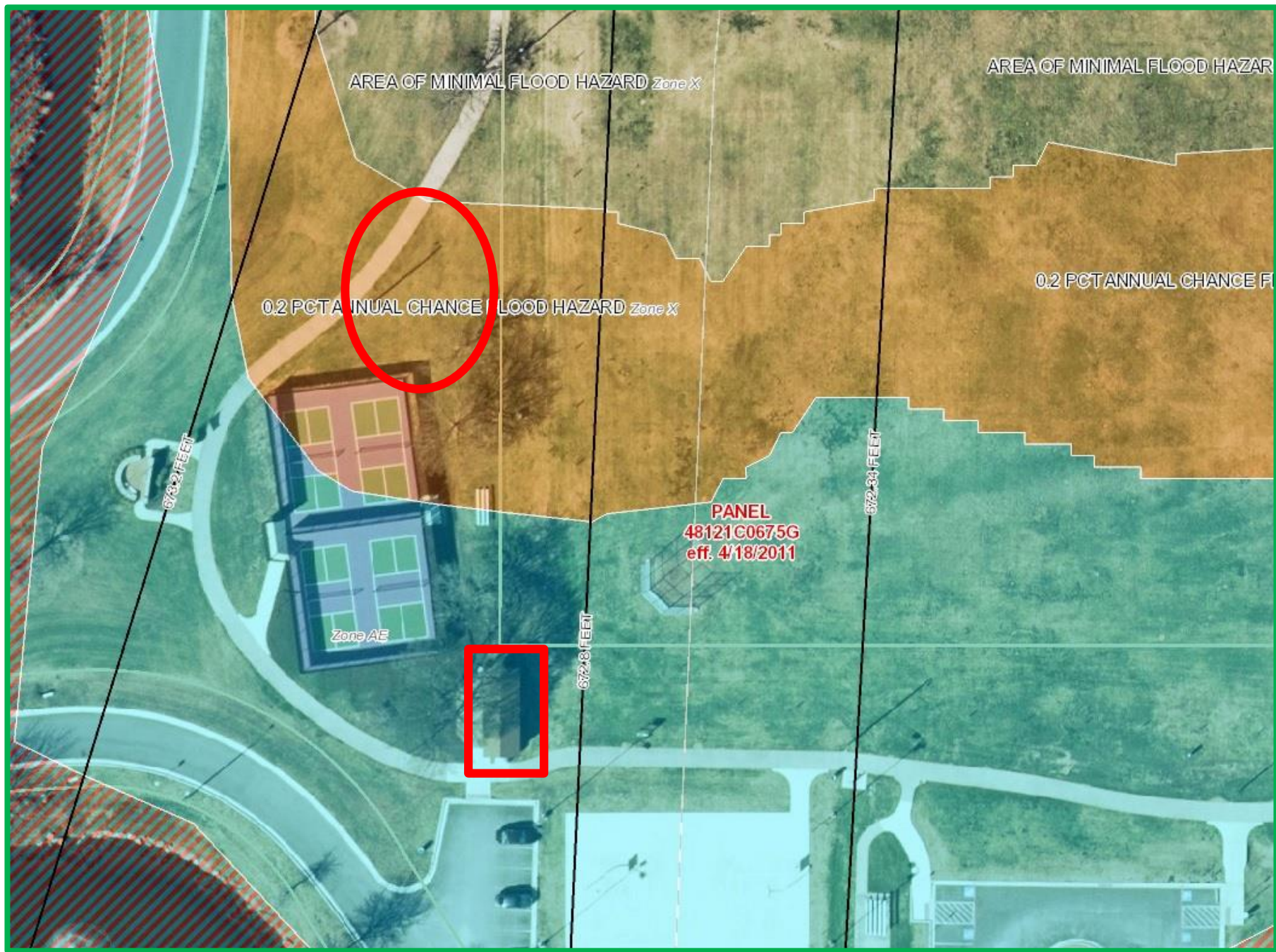
Keller Smithfield Activity Node Parking Lot

- Design \$ 21,005
- Construction \$121,099
- Total \$142,104
- Budget \$100,000
- Additional Funds Needed \$ 42,104

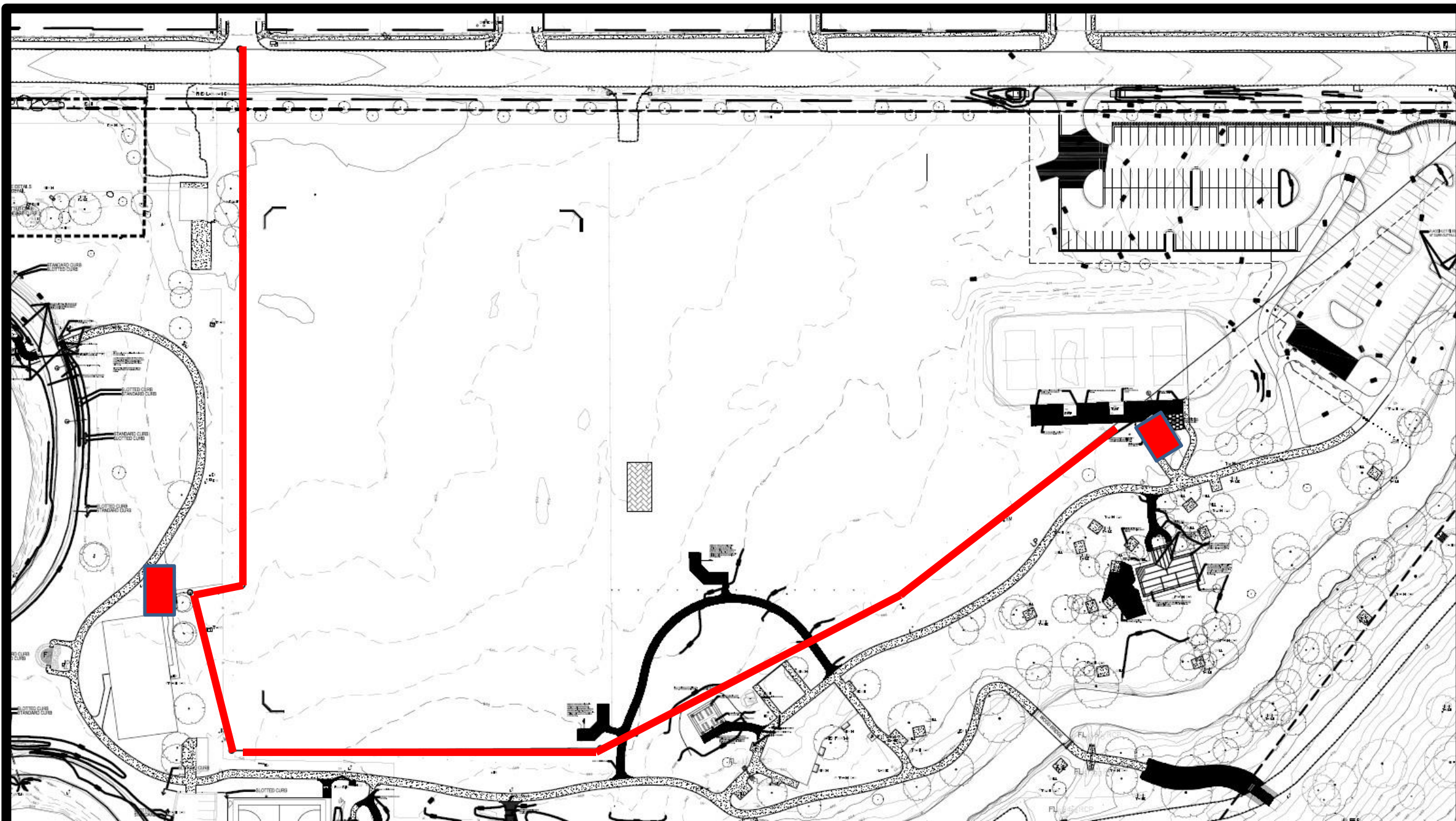


Bear Creek Park Restroom/Storage Facility





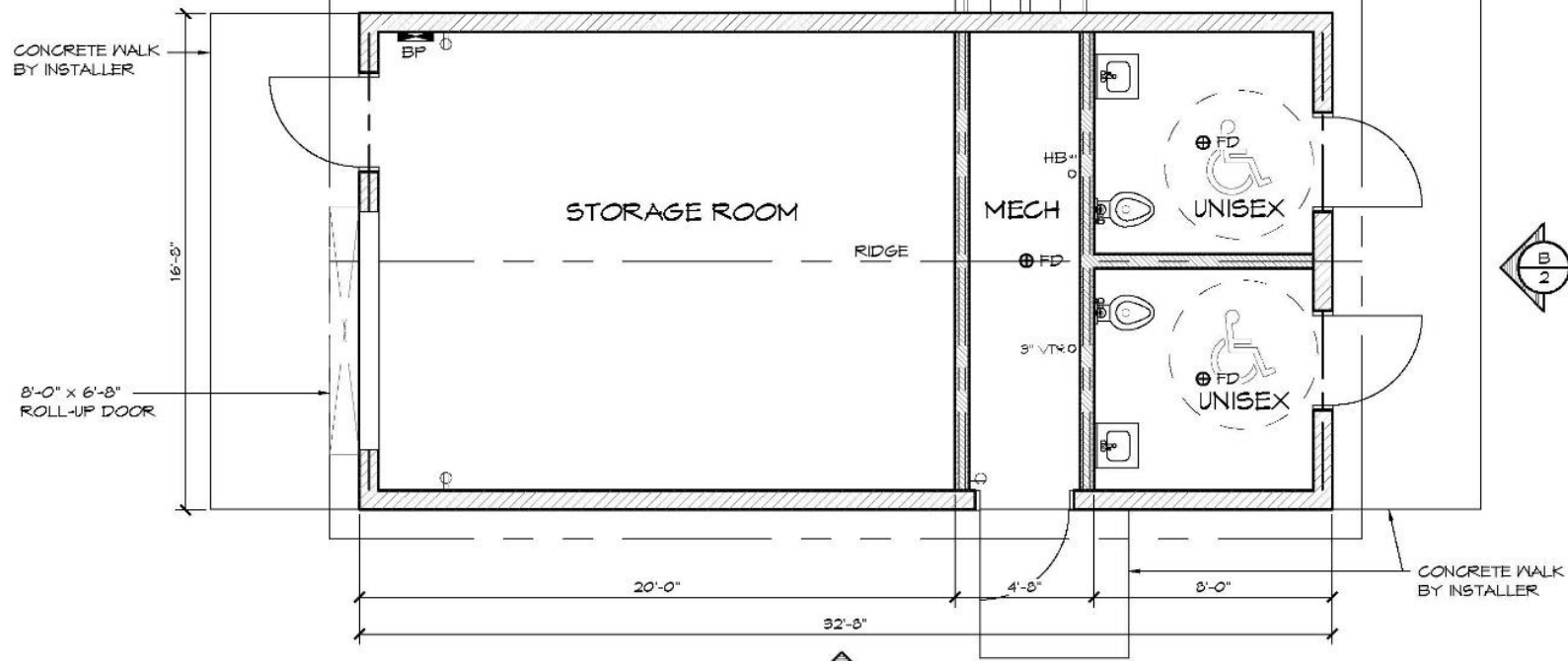




LEGEND		
SYMBOL	DESCRIPTION	AREA/ QUANTITY
---	GABLE VENT	4
===	2x6 WOOD FILLER WALL	4
	EXTERIOR WALL LIGHTS	5
	INTERIOR WALL LIGHTS	2
	INTERIOR CEILING LIGHT	8
⊙	FLOOR DRAIN	3
⊕ ID-1	WALL FAUCET	1
⊖	ELECTRICAL OUTLET	3
T SD	SOAP DISPENSER	2
	1000 FT ROLL TP DISP	2
	MIRROR	2
L HD	WALL MOUNT HAND DRYER	2
	MECH ROOM HEATER	1

THESE PLAN VIEW AND ELEVATION DRAWINGS ARE A PRELIMINARY ARCHITECTURAL REPRESENTATION OF THE BUILDING. ALL DIMENSIONS, FEATURES AND COMPONENTS SHOWN ON THESE PRELIMINARY DRAWINGS MAY OR MAY NOT BE PART OF THE QUOTE. PLEASE REFER TO THE "SCOPE OF SUPPLY AND SERVICES" LETTER PROVIDED WITH YOUR QUOTE FOR ROMTEC'S PROPOSED SCOPE OF SUPPLY.

WALL TYPE SCHEDULE	
	8" REINFORCED CONCRETE MASONRY BLOCK WALL WITH MORTAR JOINTS, GROUTED SOLID ALL CELLS RUNNING BOND PATTERN.
	6" REINFORCED CONCRETE MASONRY BLOCK WALL WITH MORTAR JOINTS, GROUTED SOLID ALL CELLS RUNNING BOND PATTERN.



1 FLOOR PLAN
SCALE: 1/4" = 1'-0"

18240 NORTH BANK ROAD - ROSEBURG, OR 97470
(503) 684-1111 FAX (503) 684-0888

PRELIMINARY

PROJECT: 2024-SIERRA II COMPACT DOUBLE RESTROOM W/STORAGE-MECH
CITY OF KELLER
BEAR CREEK PARK RESTROOM
KELLER, TEXAS

SHEET TITLE: FLOOR PLAN

PROJECT#: 868
MODEL#: 2024
DATE: 4/02/2018

REVISIONS

REV	DATE	BY

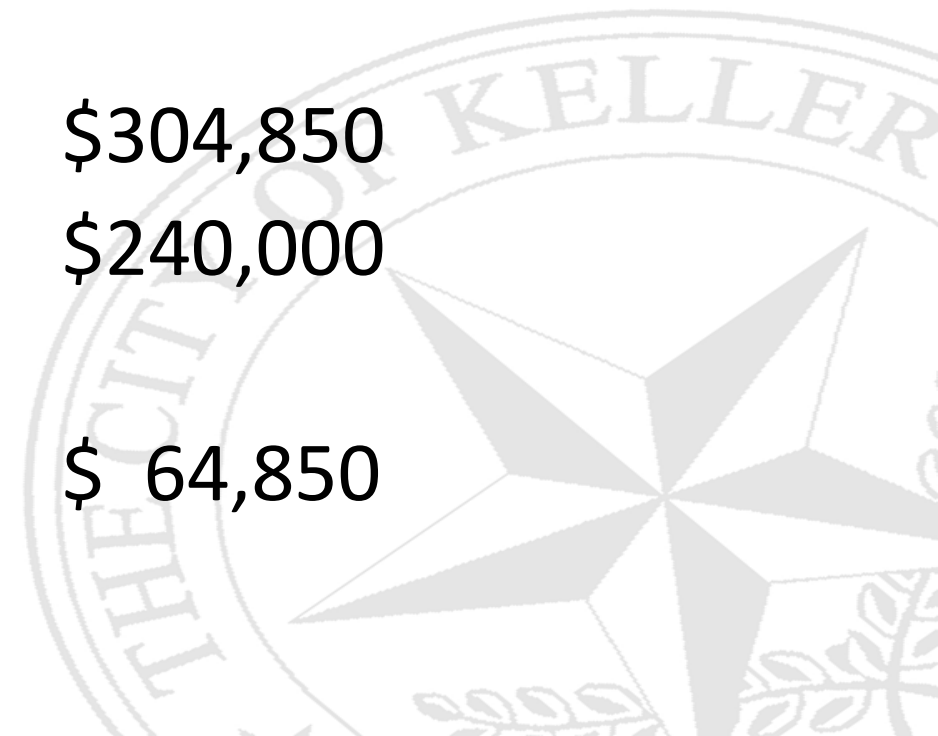
DRAWN BY: TH

SHEET NO. 1

© 2018 ROMTEC, INC. ALL RIGHTS RESERVED. THESE PLANS AND DRAWINGS MAY NOT BE REPRODUCED, ADAPTED OR FURTHER DISTRIBUTED, AND NO BUILDINGS MAY BE CONSTRUCTED FROM THESE PLANS WITHOUT THE WRITTEN PERMISSION OF ROMTEC, INC.

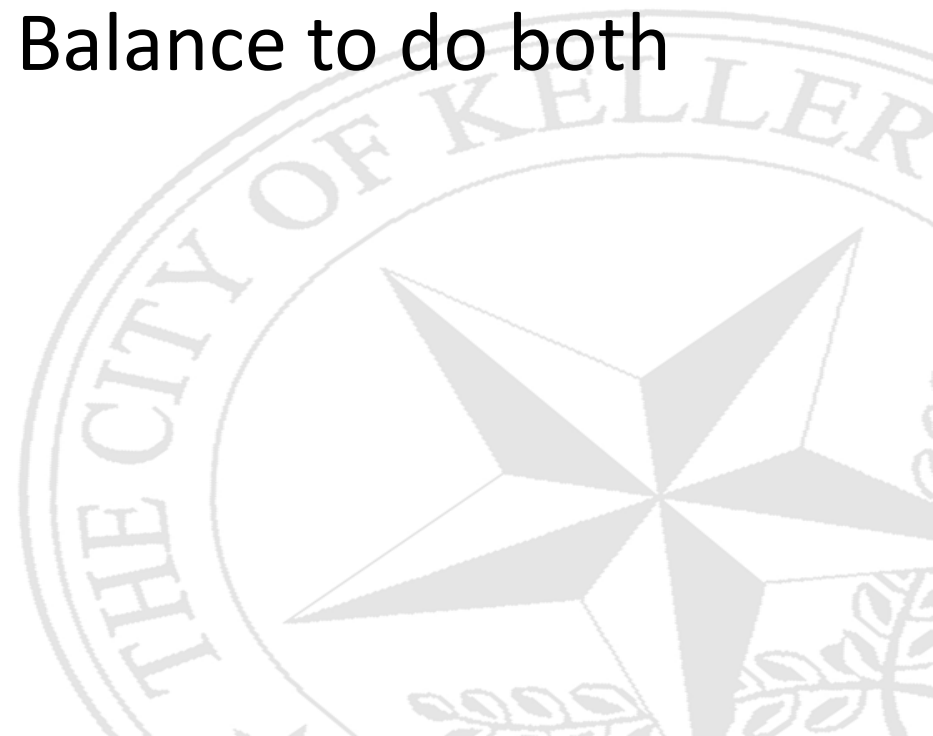
Bear Creek Park Restroom/Storage Facility

• Facility	\$201,918
• Utility Design	\$ 11,500
• Utility Construction	\$ 91,432
• Total	\$304,850
• Budget	\$240,000
• Additional Funds Needed	\$ 64,850



Options

- Combine funding and only do one project
- Modify proposed Restroom/Storage Facility to Restroom Facility only
- Allocate additional funds from KDC Fund Balance to do both projects

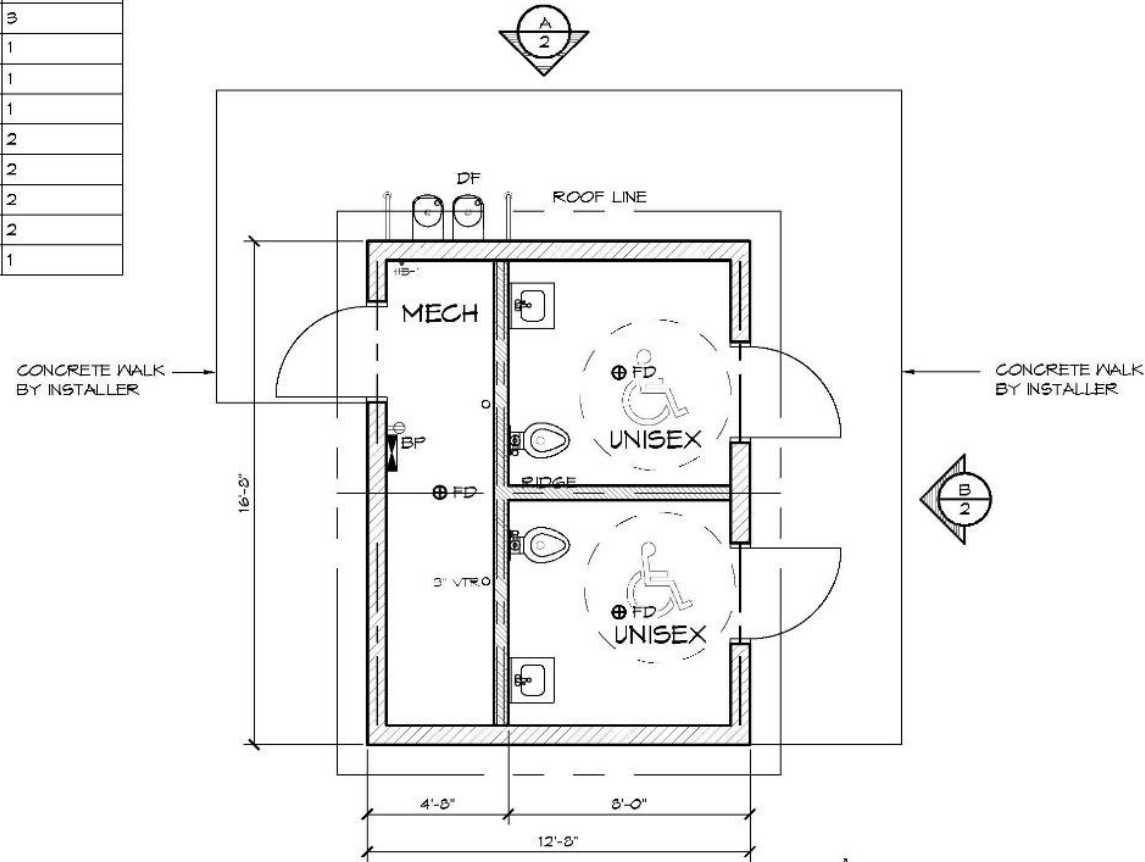


LEGEND		
SYMBOL	DESCRIPTION	AREA/ QUANTITY
---	GABLE VENT	4
===	2x6 WOOD FILLER WALL	2
	EXTERIOR WALL LIGHTS	4
	INTERIOR WALL LIGHTS	2
	INTERIOR CEILING LIGHTS	2
○	FLOOR DRAIN	3
TH	WALL HYDRANT	1
HB-1	WALL FAUCET	1
⊕	ELECTRICAL OUTLET	1
SD	SOAP DISPENSER	2
	1000 FT ROLL TP DISP	2
M	MIRROR	2
HD	WALL MOUNT HAND DRYER	2
	MECH ROOM HEATER	1

THESE PLAN VIEW AND ELEVATION DRAWINGS ARE A PRELIMINARY ARCHITECTURAL REPRESENTATION OF THE BUILDING. ALL DIMENSIONS, FEATURES AND COMPONENTS SHOWN ON THESE PRELIMINARY DRAWINGS MAY OR MAY NOT BE PART OF THE QUOTE. PLEASE REFER TO THE "SCOPE OF SUPPLY AND SERVICES" LETTER PROVIDED WITH YOUR QUOTE FOR ROMTEC'S PROPOSED SCOPE OF SUPPLY.

WALL TYPE SCHEDULE

- 8" REINFORCED CONCRETE MASONRY BLOCK WALL WITH MORTAR JOINTS, GROUTED SOLID ALL CELLS RUNNING BOND PATTERN.
- 6" REINFORCED CONCRETE MASONRY BLOCK WALL WITH MORTAR JOINTS, GROUTED SOLID ALL CELLS RUNNING BOND PATTERN.



1 FLOOR PLAN
SCALE: 1/4" = 1'-0"

ROMTEC

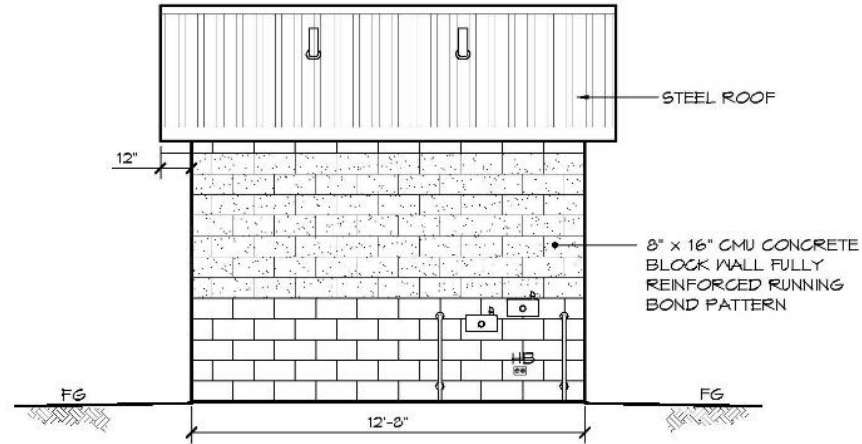
18240 NORTH BANK ROAD - ROSEBURG, OR 97470
503-766-3341 FAX 503-766-3342

PRELIMINARY

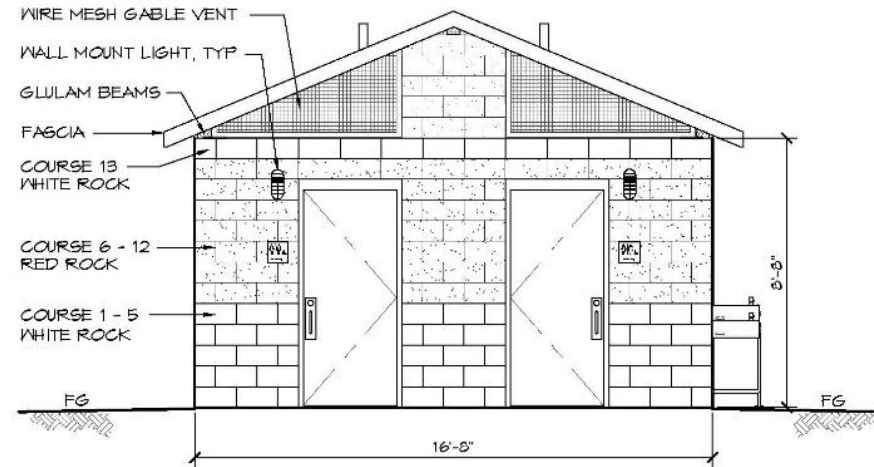
© 2018 ROMTEC, INC. ALL RIGHTS RESERVED. THESE PLANS AND DRAWINGS MAY NOT BE REPRODUCED, ADAPTED OR FURTHER DISTRIBUTED AND NO BUILDINGS MAY BE CONSTRUCTED FROM THESE PLANS WITHOUT THE WRITTEN PERMISSION OF ROMTEC, INC.
PROJECT: 2024-SIERRA II COMPACT DOUBLE RESTROOM W/STORAGE-MECH
CITY OF KELLER
BEAR CREEK PARK RESTROOM-ONLY
KELLER, TEXAS
SHEET TITLE: FLOOR PLAN

PROJECT#: 885
MODEL#: 2022
DATE: 4/23/2018
REVISIONS
REV. DATE BY
TH

1



A ELEVATION VIEW
SCALE: 1/4" = 1'-0"



B ELEVATION VIEW
SCALE: 1/4" = 1'-0"

ROMTEC

18240 NORTH BANK ROAD - ROSEBURG, OR 97470

(503) 488-3441 FAX (503) 488-0003

PRELIMINARY

PROJECT: 2024-SIERRA II COMPACT DOUBLE RESTROOM W/STORAGE-MECH

CITY OF KELLER

BEAR CREEK PARK RESTROOM-ONLY

KELLER, TEXAS

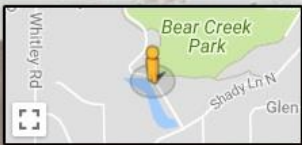
SHEET TITLE: ELEVATIONS (CMU)

PROJECT: 885	
MODEL: 2022	
DATE: 4/23/2018	
REVISIONS	
REV.	DATE BY
DRAWN BY: TH	
SHEET NO. 2	

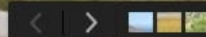
Bear Creek Park Rd
Keller, Texas

Google, Inc.

Street View - Nov 2016



Google





Keller Development Corporation



Questions?

Cody Maberry 817-743-4002

