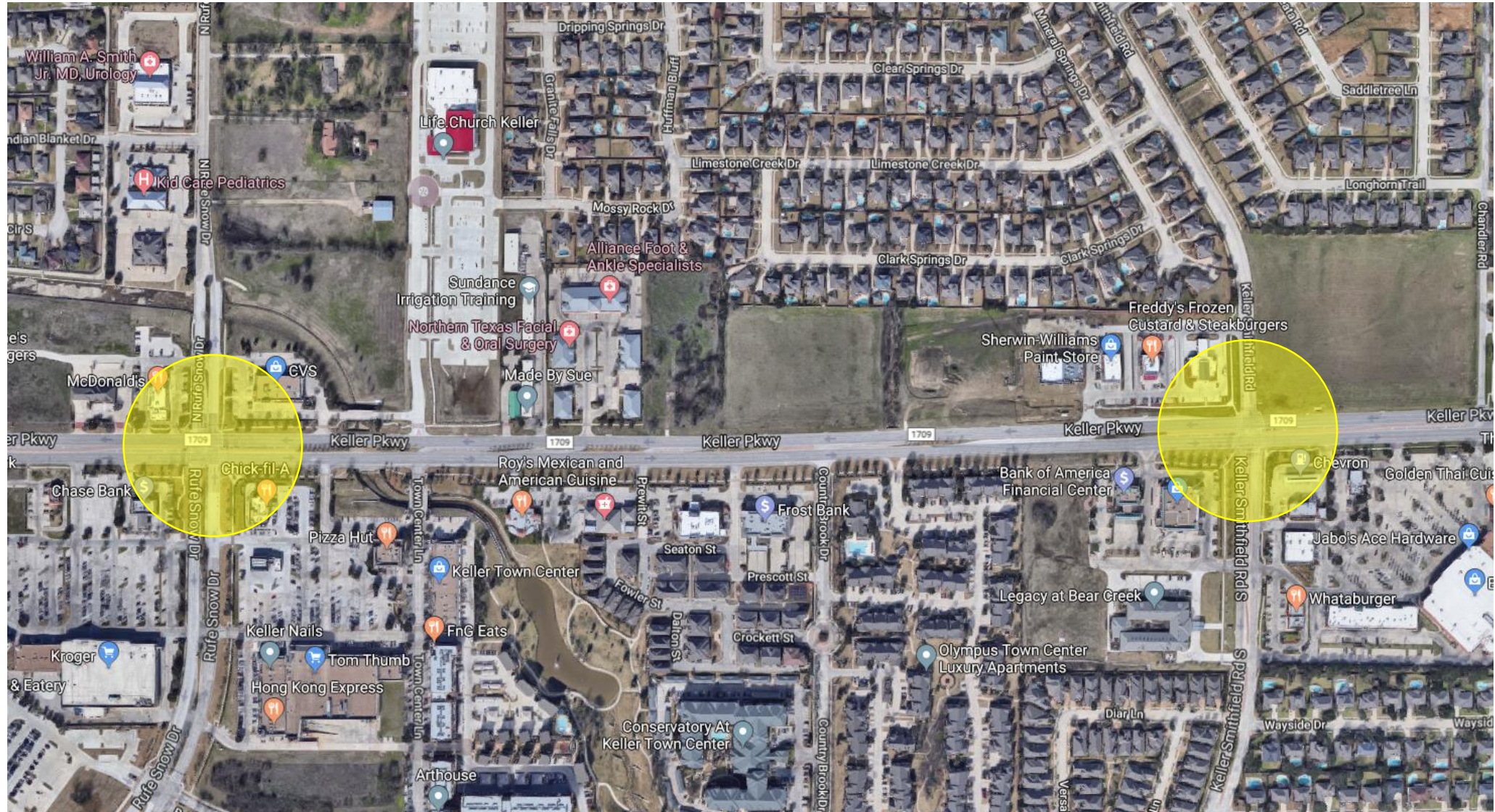


**Dual Left Turns for
Rufe Snow and Keller-Smithfield
at FM 1709 (Keller Parkway)**

Background

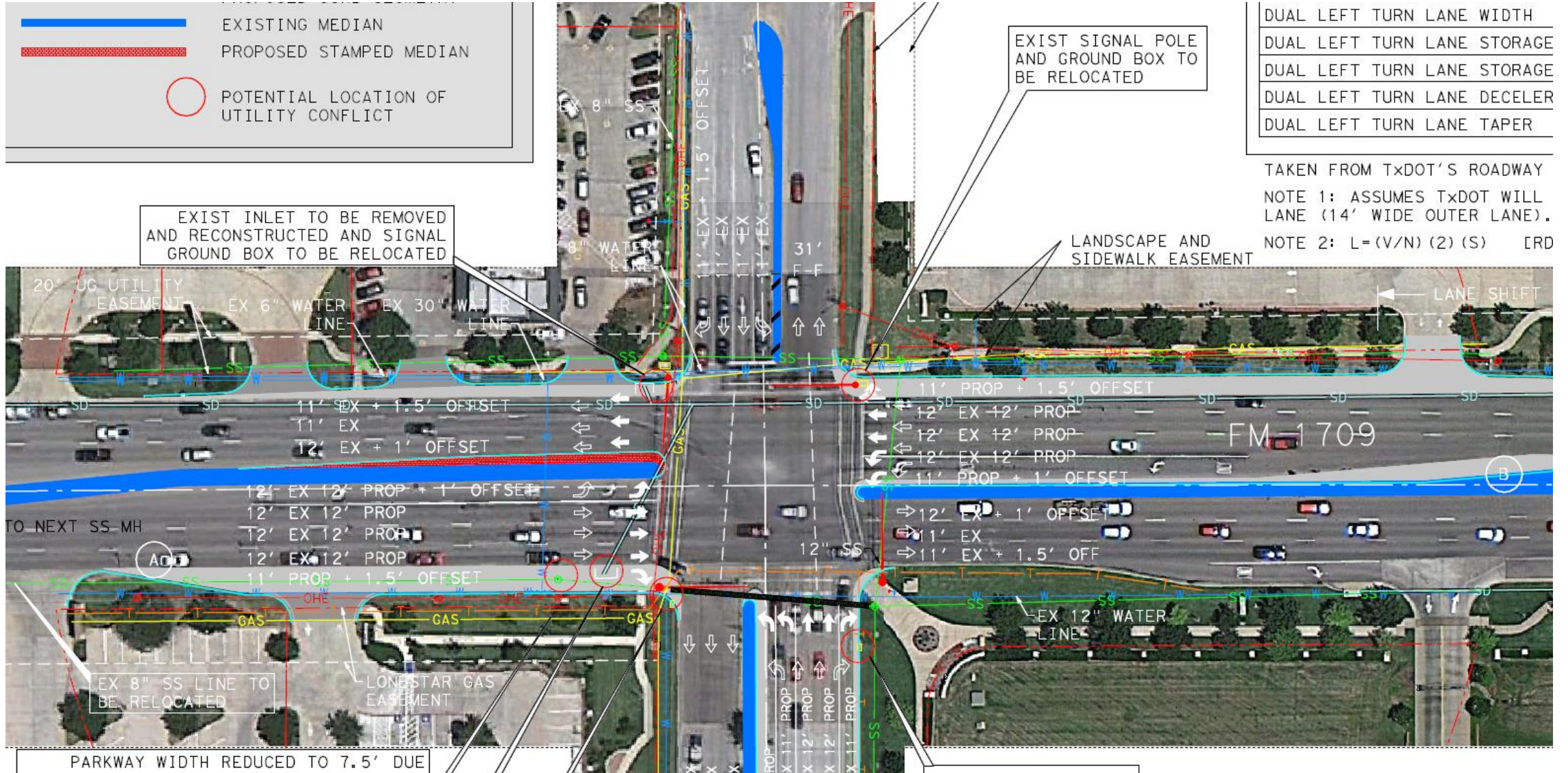
- Originally proposed in 2012/13 for two dual-left turns at each intersection (~\$5M, or \$2.5M each)
- In 2017, staff reviewed operational impacts of only North/South dual-left turn lanes
- Avoids wholesale reconstruction and “repurposes” existing pavement (~\$500k, or \$250k each)
- Alignment with TxDOT overlay project on FM 1709

Intersections

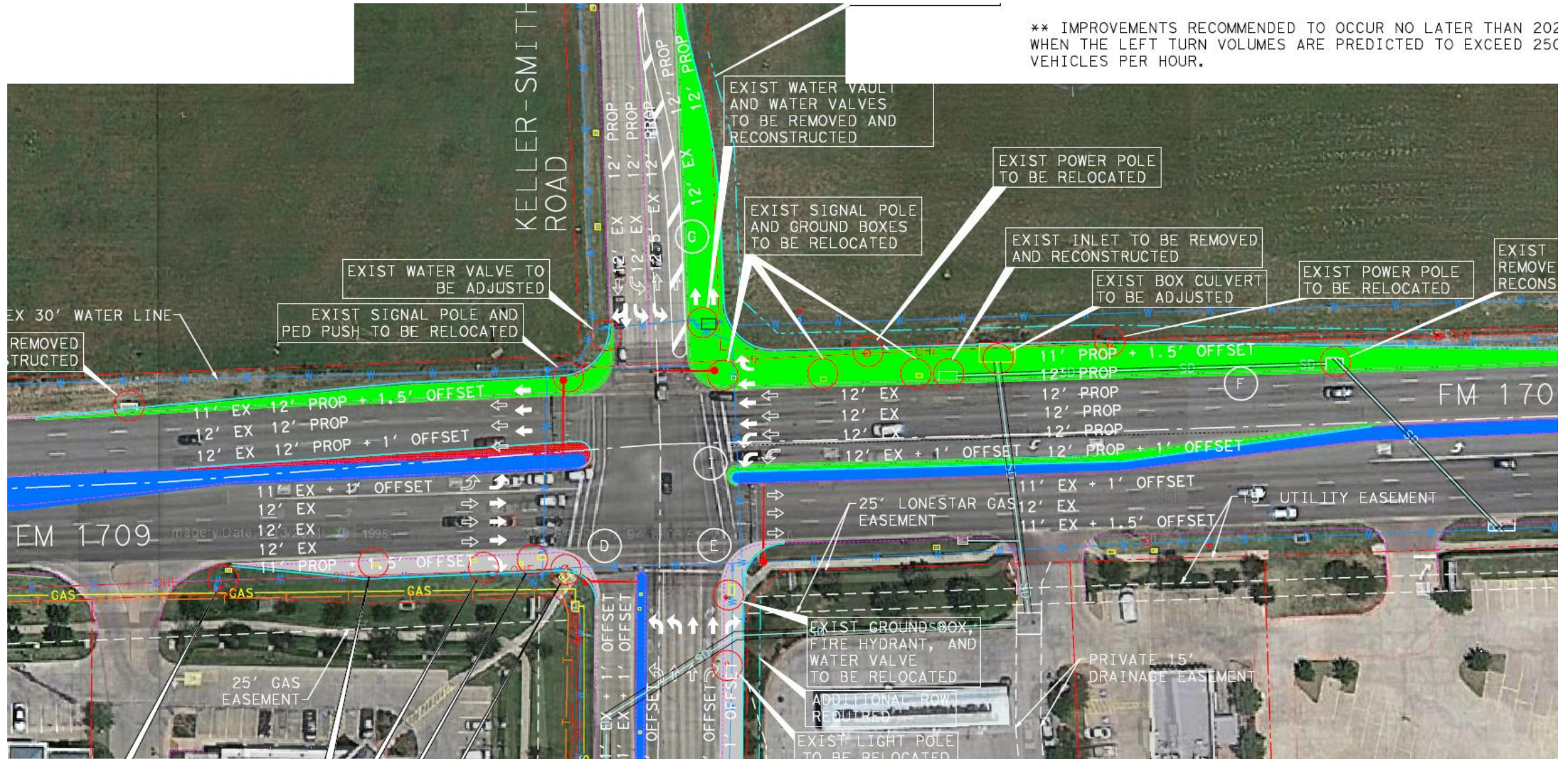


Excellence • Integrity • Service • Creativity • Communication

Previous Concept: Rufe Snow

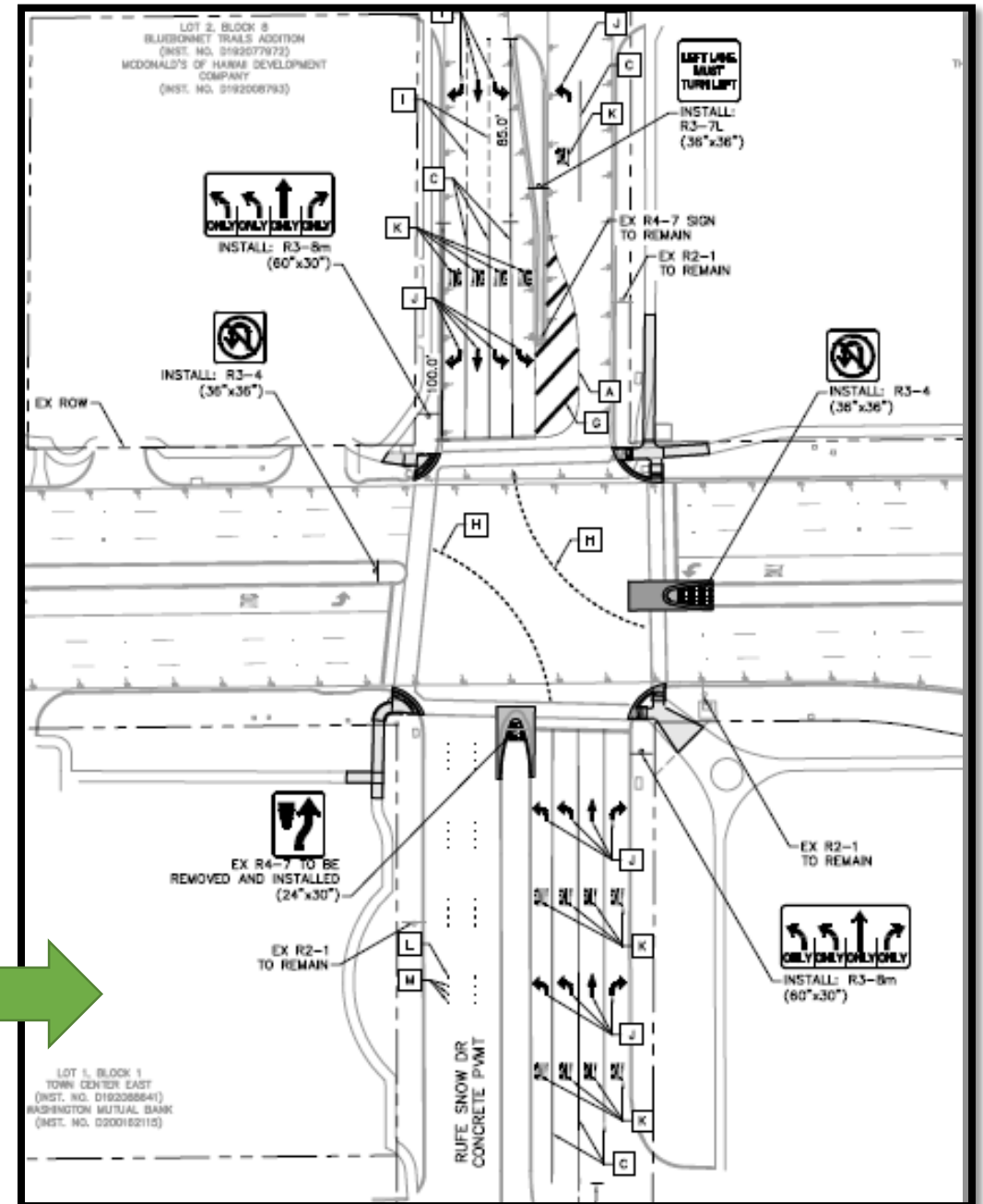
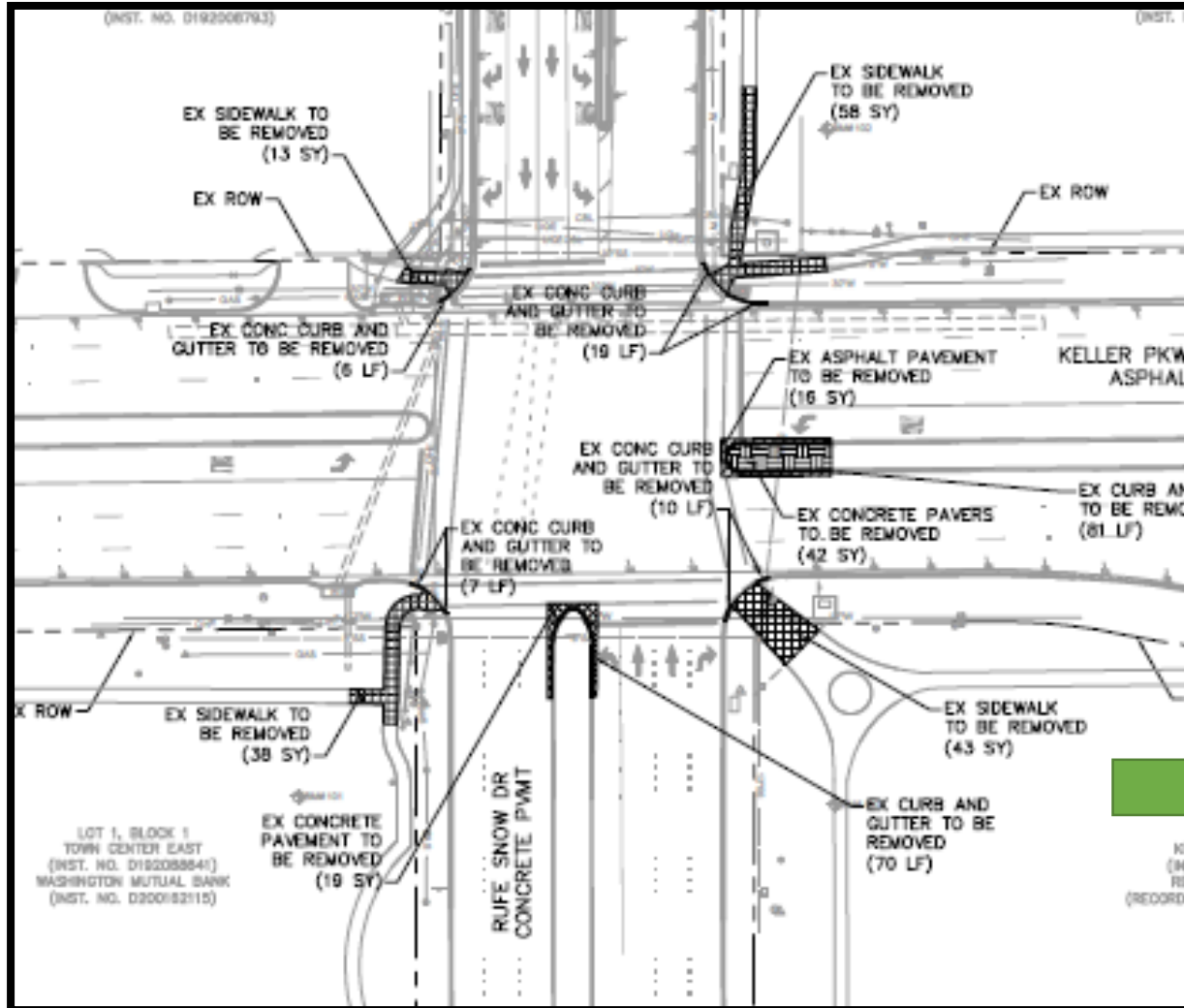


Previous Concept: Keller-Smithfield

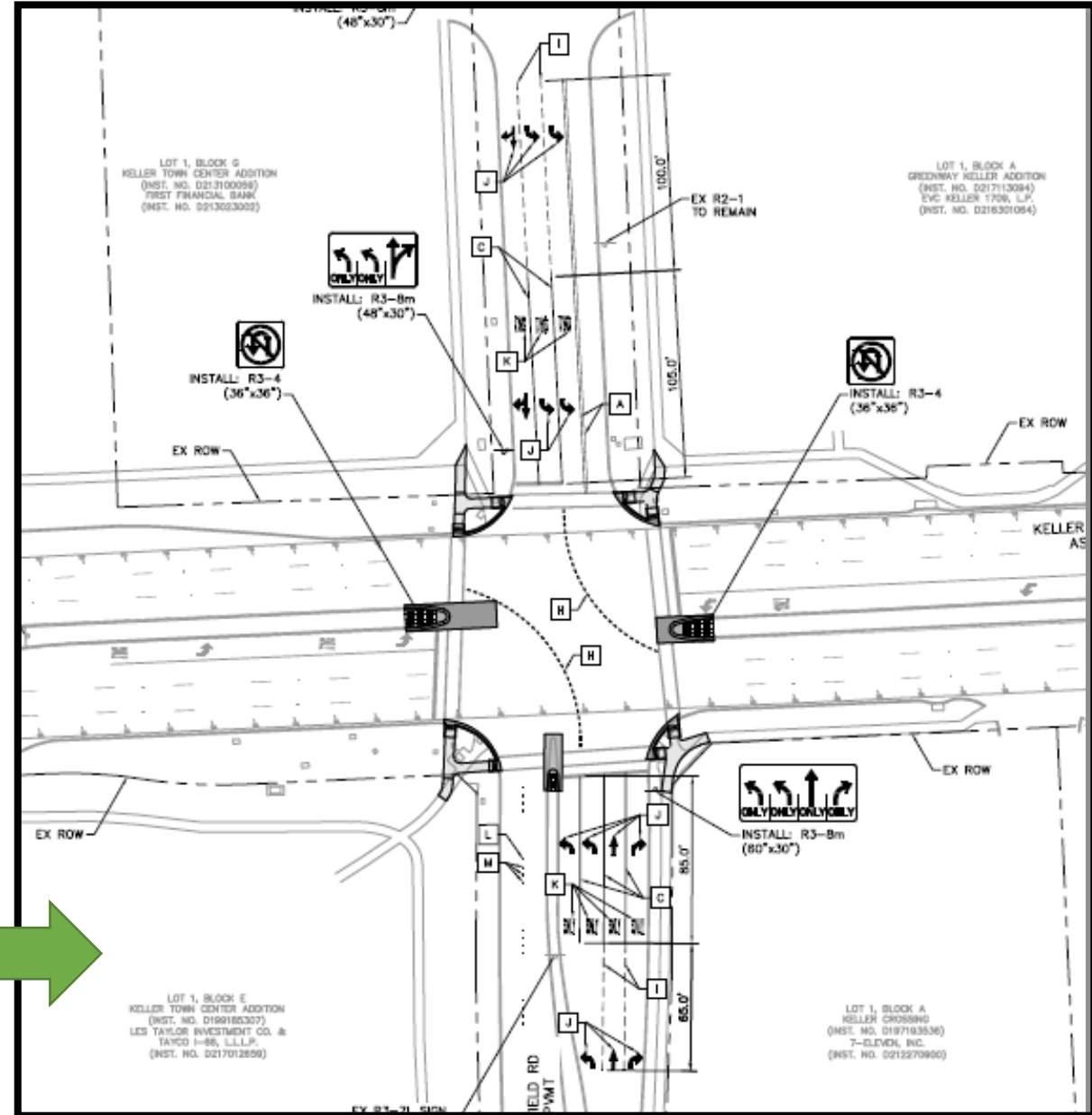
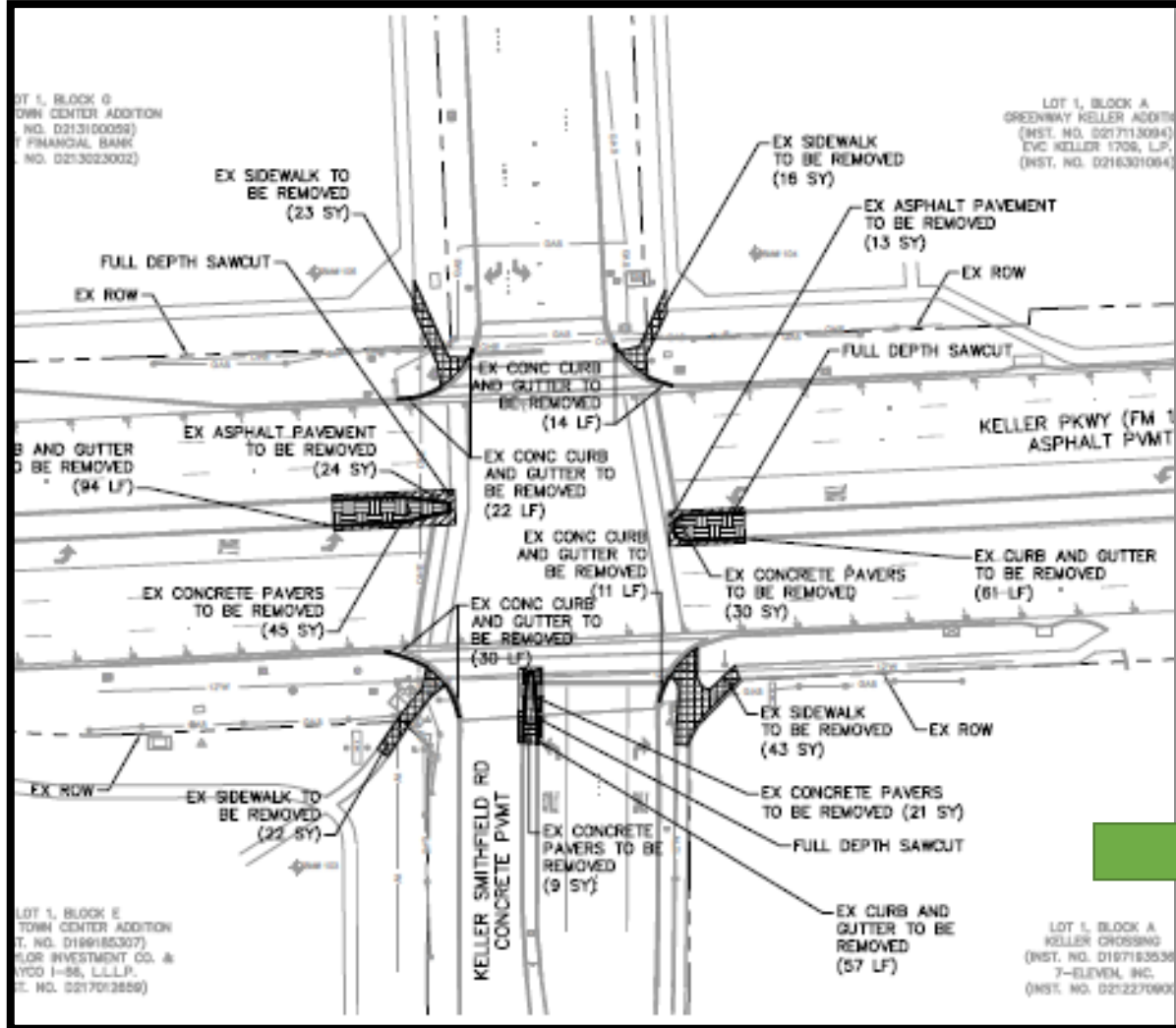


** IMPROVEMENTS RECOMMENDED TO OCCUR NO LATER THAN 202 WHEN THE LEFT TURN VOLUMES ARE PREDICTED TO EXCEED 250 VEHICLES PER HOUR.

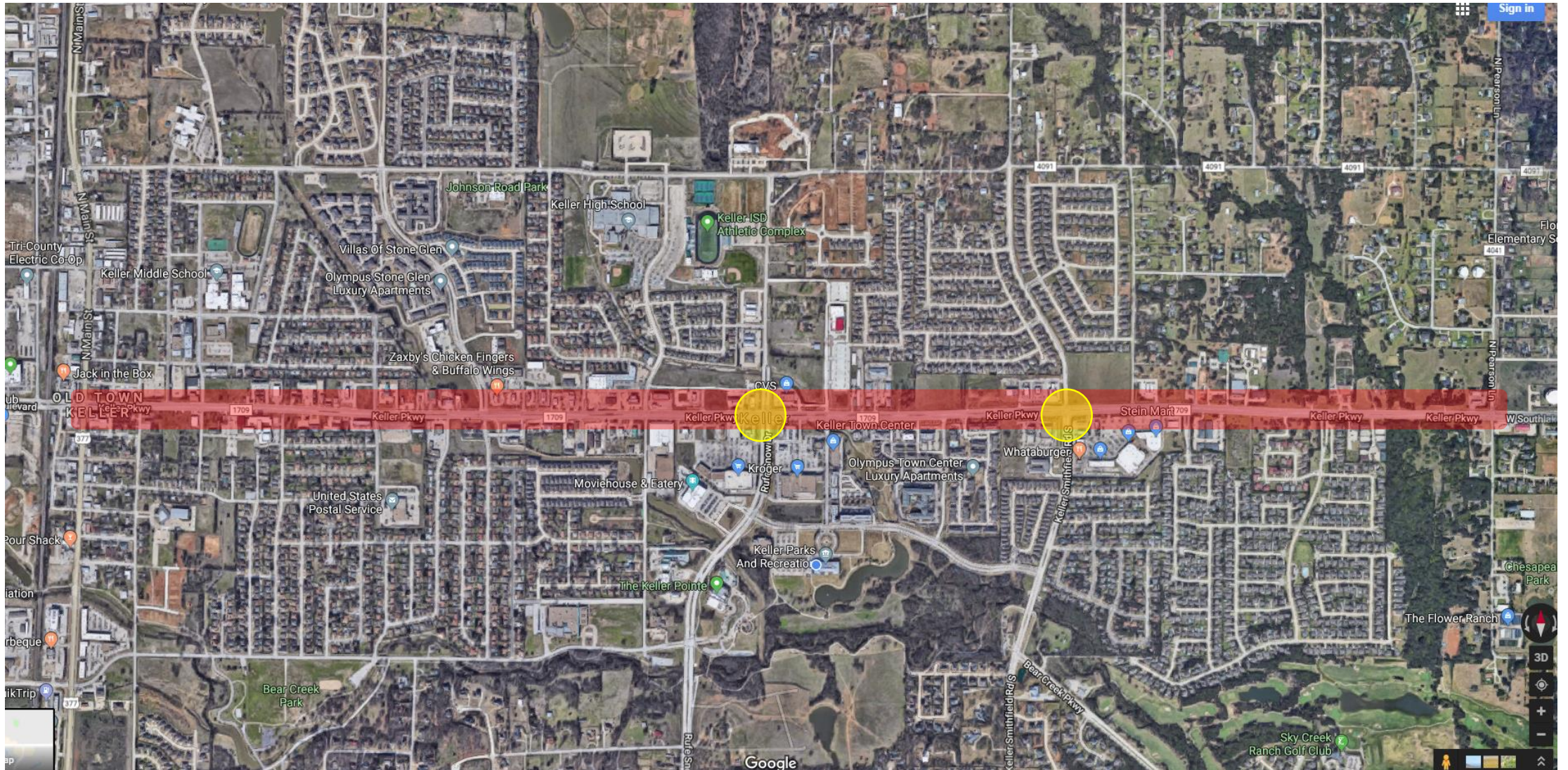
Rufe Snow



Keller-Smithfield



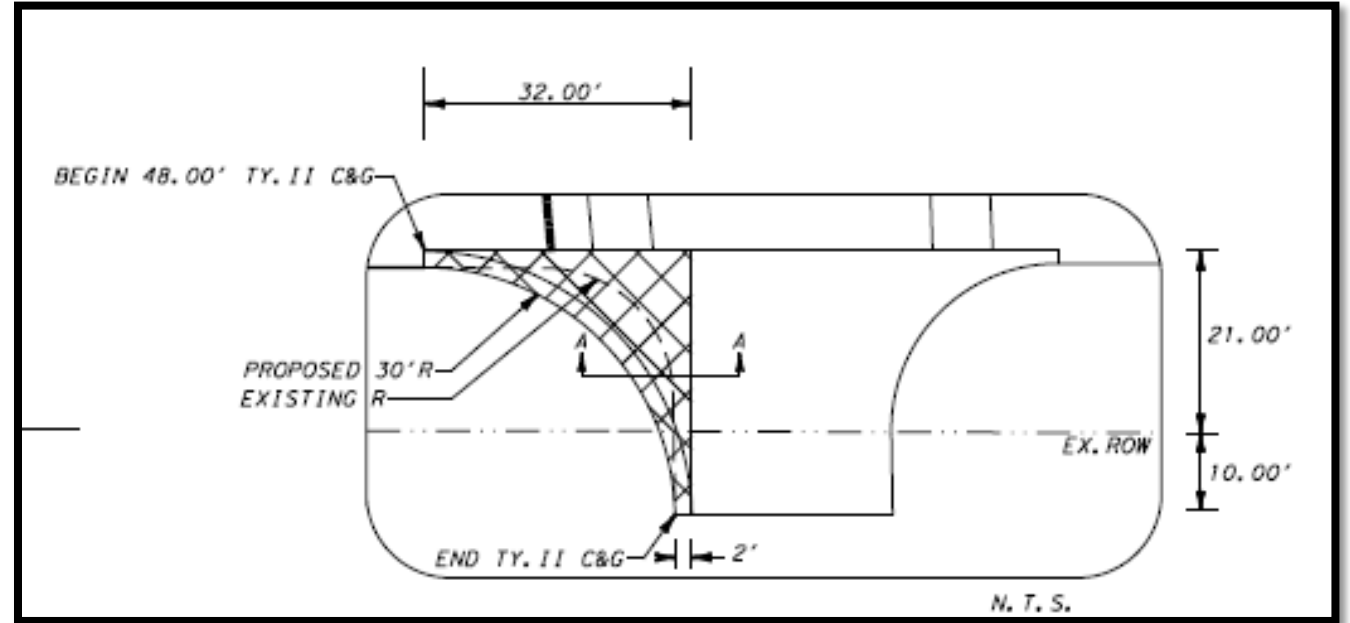
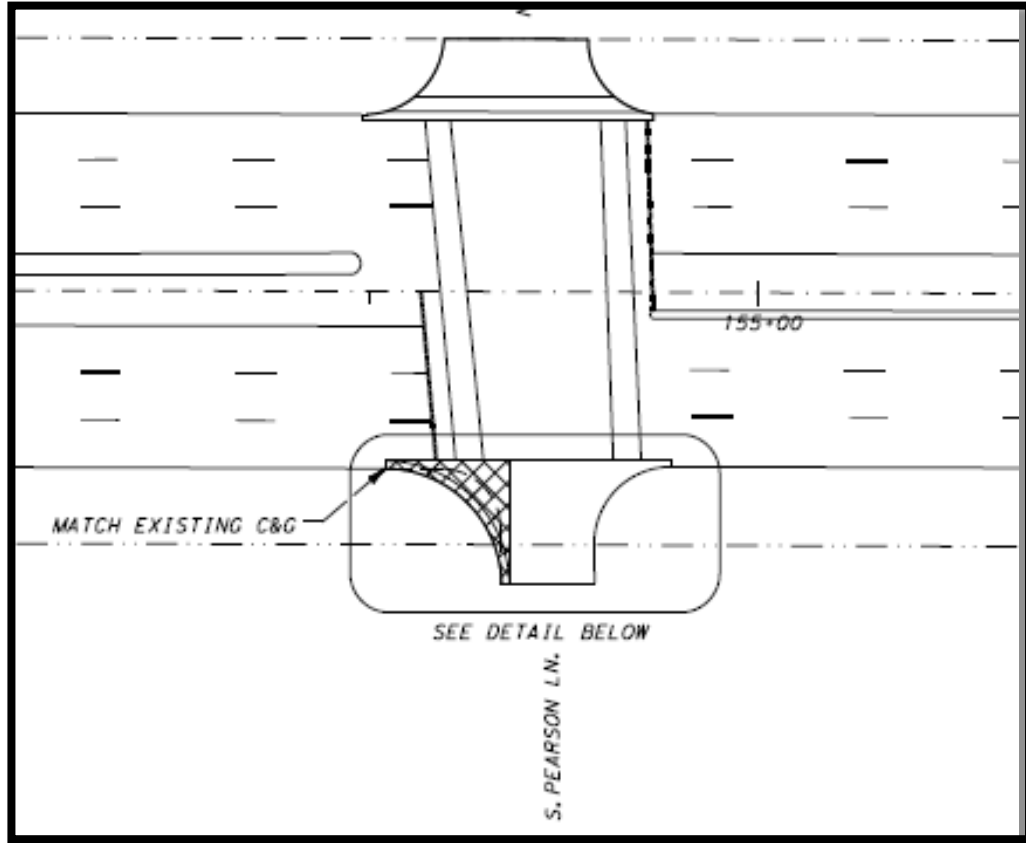
TxDOT Overlay Work



TxDOT Overlay Work

- Scheduled to begin work in April 2019
- Extend from Pearson Lane to U.S. 377
- Intersection improvements anticipated for SW corner of Pearson
- State to cover intersection modification costs with overlay project

Pearson Lane Southwest Corner Modification (Southlake-owned intersection)



ESTIMATED RUFÉ SNOW & KELLER-SMITHFIELD COSTS

\$7,600	Pavement Already Part of State Work
\$116,400	Additional Pavement/Pavers/Concrete Work
\$176,500	Additional Traffic Signal Work
\$300,500	Estimated Cost for Both Intersections



Questions?
Alonzo Liñán
817-743-4081