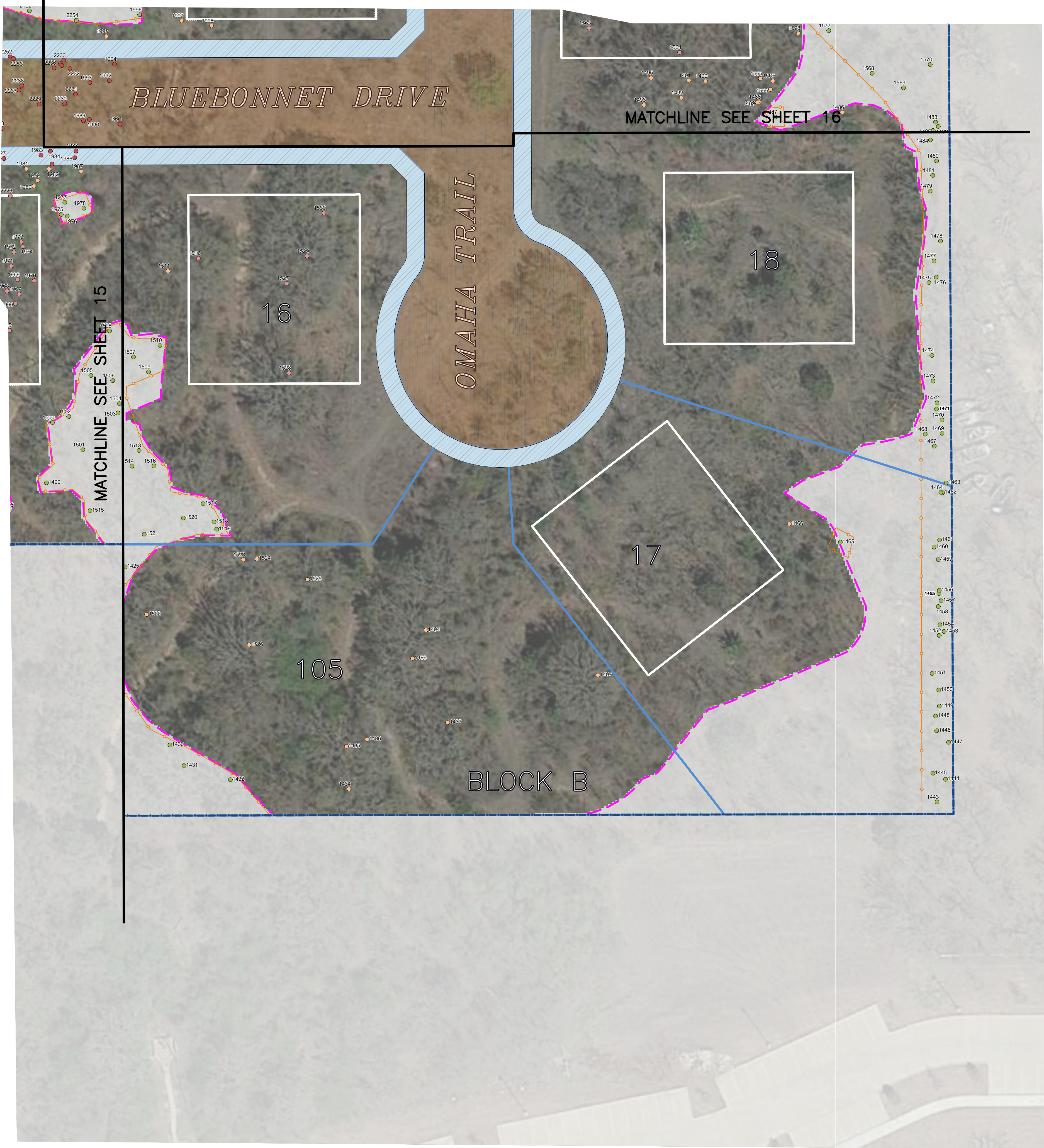
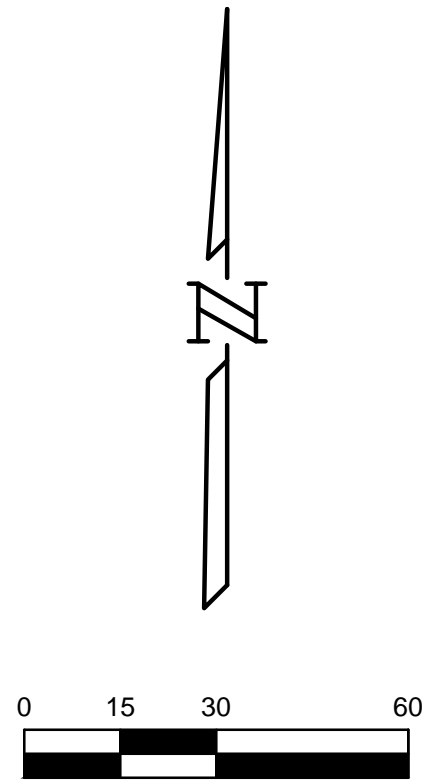
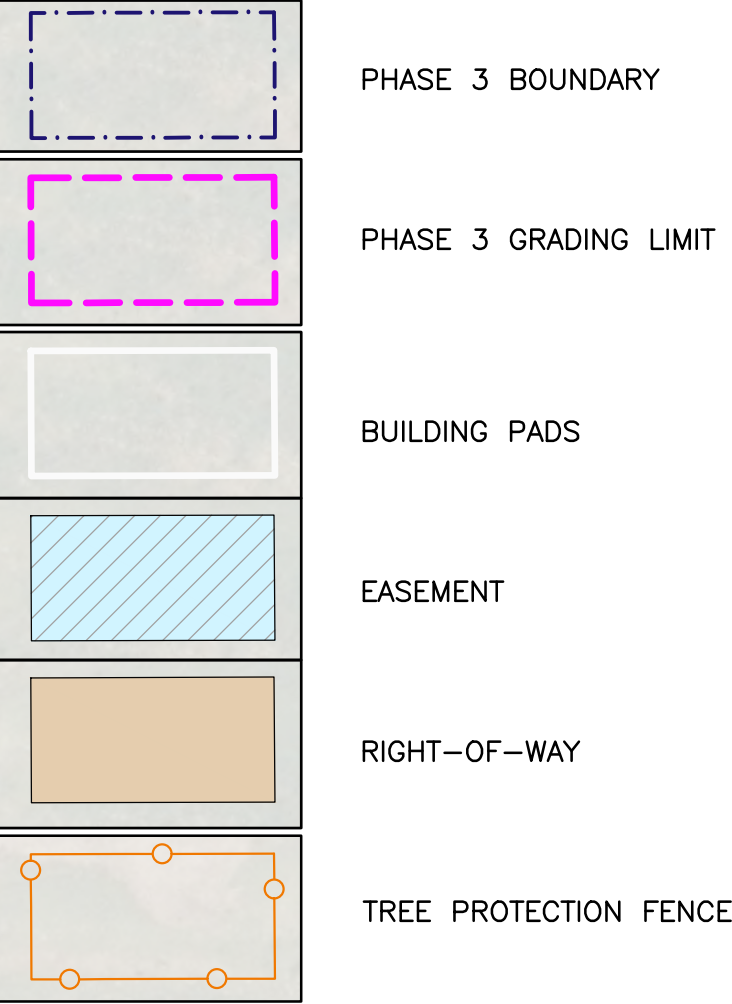


S:\NTX-LAND\0404\100 GIS\110 MXD\Phase 3\Tree Mitigation Plan02.dwg, 2/20/2019 12:24 PM, Evan Stidham



TREE REMOVAL PROPOSED BY THIS APPLICATION INCLUDES UNPROTECTED TREES WITHIN RIGHT-OF-WAYS, EASEMENTS, AND LOTS (AS REQUIRED), AND PROTECTED TREES WITHIN RIGHT-OF-WAYS AND EASEMENTS ONLY, AS SUMMARIZED IN THE TABLES ON SHEETS 18-25.

LEGEND



- TREE TO BE REMOVED WITHIN ROW/EASEMENT
- TREE TO BE REMOVED WITHIN BUILDING PAD
- TREE TO BE REMOVED BEYOND BUILDING PAD
- TREE TO REMAIN

NOTE:
THIS TREE PRESERVATION PLAN DEPICTS ALL OF THE PROTECTED TREES WITHIN THE LIMITS OF DISTURBANCE FOR PHASE 3 AS IDENTIFIED IN THE TREE SURVEY PREPARED BY INTEGRATED ENVIRONMENTAL SOLUTIONS (IES) ON DECEMBER 8, 2014, UPDATED DECEMBER 2, 2015.

BENCHMARKS:
BM#1 - CITY OF KELLER MONUMENT #4-LOCATED 10.6' EAST OF THE EAST BACK CURB OF TRAIL RIDGE DRIVE, AND IS 53'+/- SOUTH OF THE SOUTH EDGE OF PAVEMENT OF MOUNT GILEAD ROAD. ELEV=738.51
BM#2 - A STANDARD NGS DISK STAMPED P 941 1946 AND IS LOCATED ABOUT 32 KM (19.90 MI) NORTH-NORTHEAST OF FORT WORTH, IN THE NORTHWEST CORNER OF ROANOKE, AND IN THE SOUTHEAST BRIDGE ABUTMENT OF THE U.S. HIGHWAY 377 OVERPASS OF STATE HIGHWAY 114. ELEV=642.27

REV	DATE	REVISION

LJA Engineering, Inc.
6060 North Central Expressway
Suite 440
Dallas, Texas 75206
Phone 469.621.0710
FRN - F-1386

TREE PRESERVATION PLAN

GEAN ESTATES
PHASE 3

CITY OF KELLER,
TARRANT COUNTY, TEXAS

REVIEWED BY THE CITY OF KELLER AND
RELEASED FOR CONSTRUCTION.
DATE: _____

DIRECTOR OF PUBLIC WORKS / CITY ENGINEER

DESIGNED: STIDHAM
DRAWN: STIDHAM
APPROVED: HANSEN

PROJECT NUMBER:
WFXM8300
DATE: FEB 2019

SCALE
HORZ: 1"=30'
VERT: N/A

REV DATE:
SHEET
17
OF 30 SHEETS