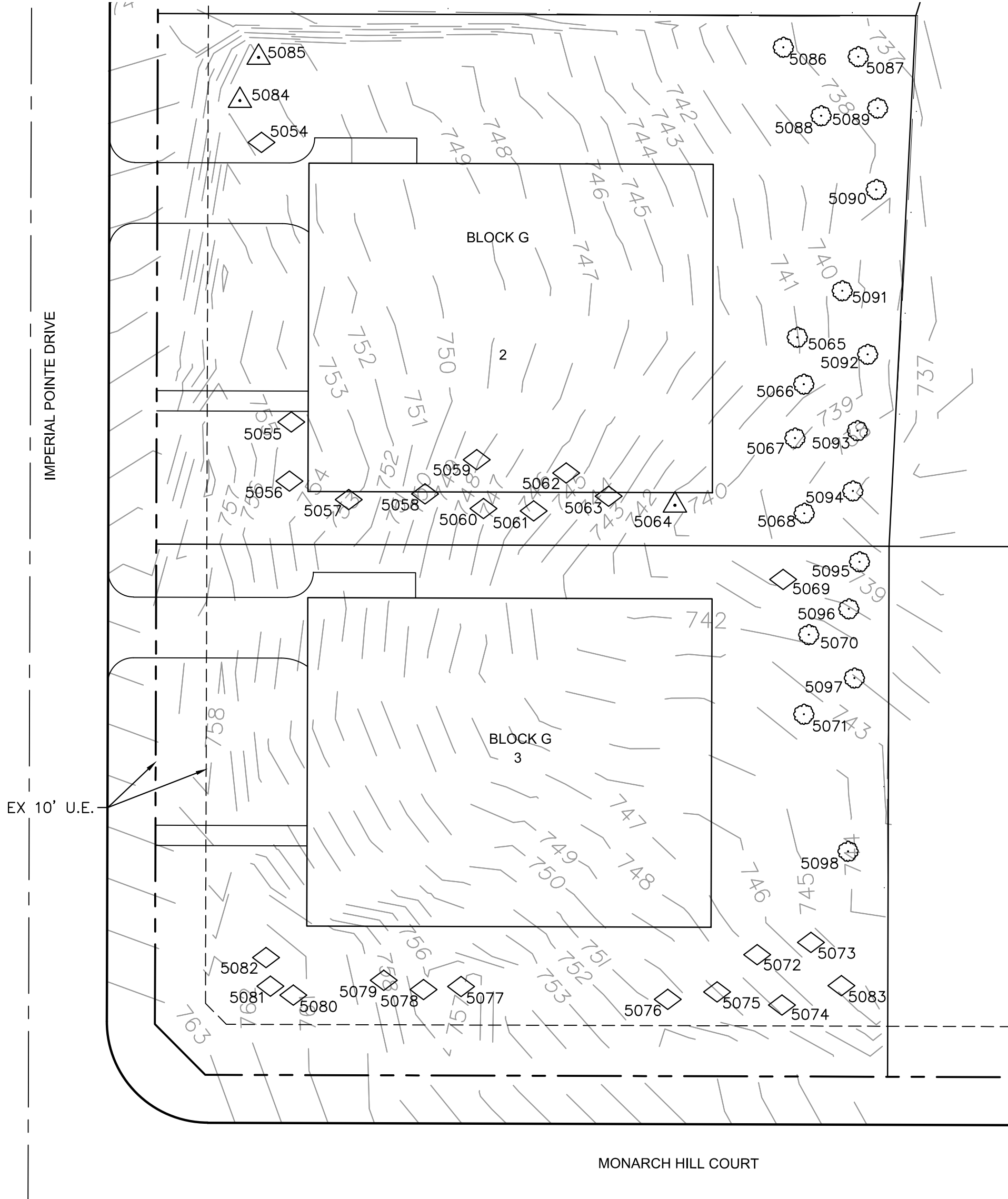
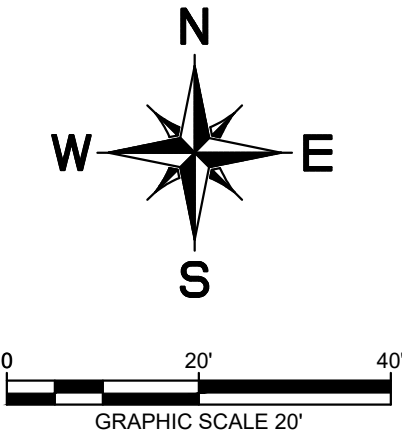
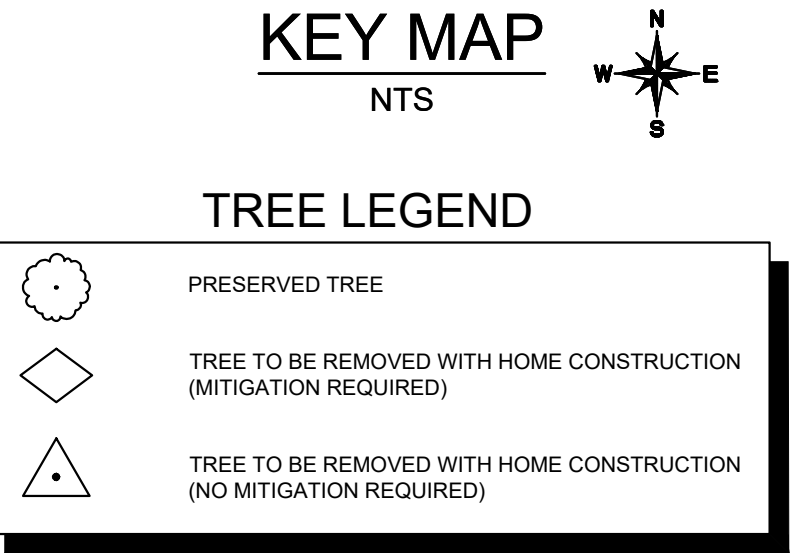
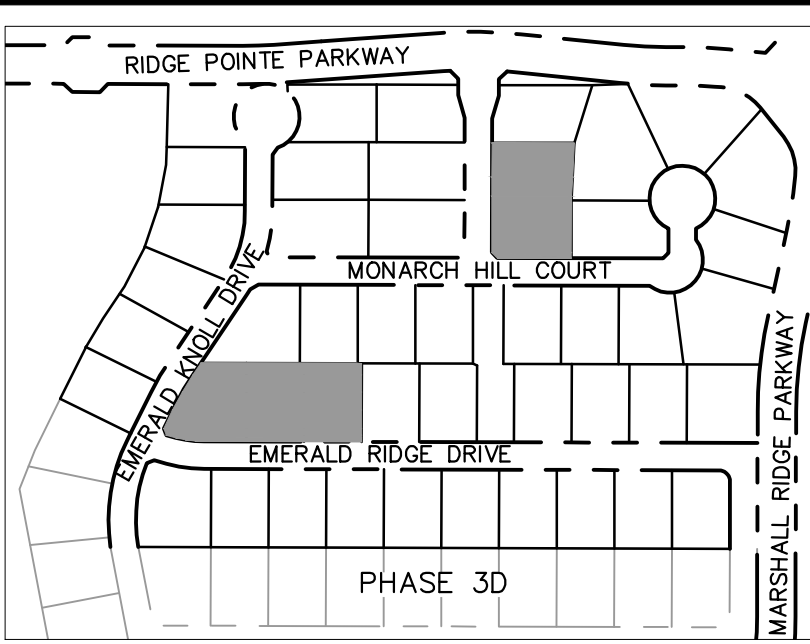
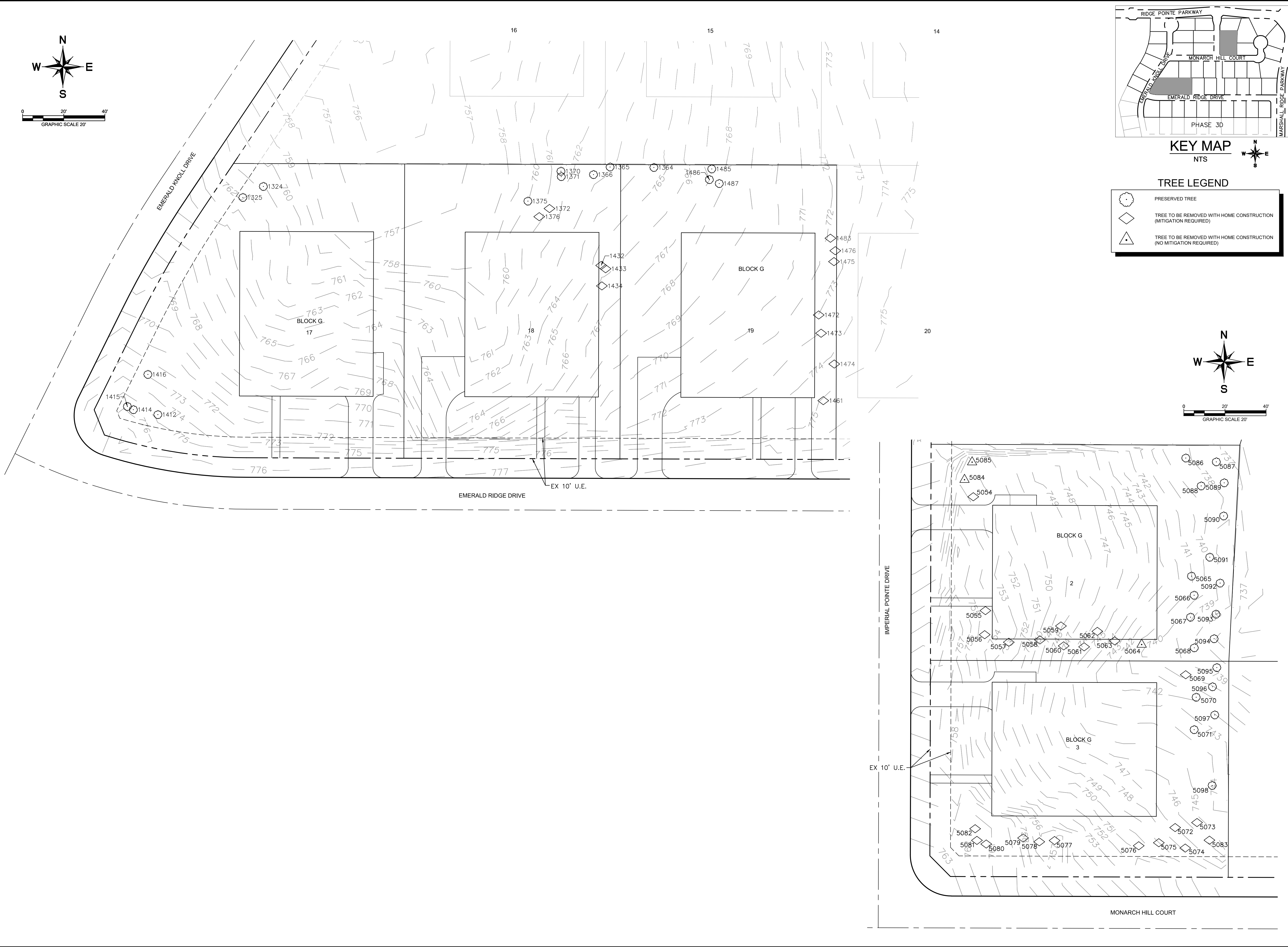


Plotted By: Pfister, Brock Date: May 09, 2019 05:00:58pm File Path: K:\VRI_Civil\061179160 - Marshall Ridge\Code Tree Preservation\Phase 1 South\DWG\Code Tree Preservation Plan - Phase 1 South_v2.dwg

This document, together with the concepts and designs presented herein, as an instrument of service, is intended only for the specific purpose and client for which it was prepared. Reuse of and improper reliance on this document without written authorization and adaptation by Kimley-Horn and Associates, Inc. shall be without liability to Kimley-Horn and Associates, Inc.



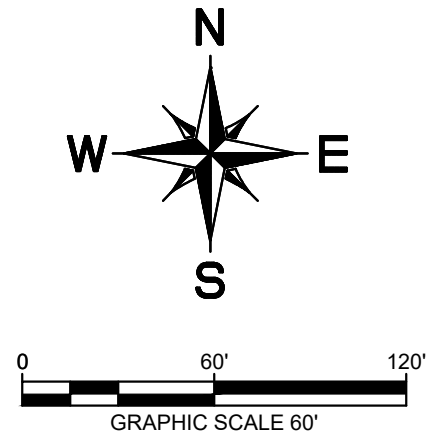
MARSHALL RIDGE		TREE SURVEY		KHA PROJECT 061179160	
PHASE 1 SOUTH		BLOCK D - LOTS 19-21, & 23; BLOCK G - LOTS 17-19, & 2-3.		DATE MAY 2019	
CITY OF KELLER		TARRANT COUNTY, TEXAS		SCALE: AS SHOWN	
				DESIGNED BY: BRM	
				DRAWN BY: MTH	
				CHECKED BY: BRM	
SHEET NUMBER C-02		REVISIONS		No.	
				DATE	
				BY	

Kimley»Horn

© 2019 KIMLEY-HORN AND ASSOCIATES, INC.
5750 GENESIS COURT, SUITE 200, FRISCO, TX 75034
PHONE: 972-335-3580 FAX: 972-335-3779
WWW.KIMLEY-HORN.COM
TEXAS REGISTERED ENGINEERING FIRM F-928

Plotted By:Frister, Brock Date:May 09, 2019 05:01:41pm File Path:K:\FRI_Civil\061179160 - Marshall Ridge\Code\Tree Preservation\Phase 1 South\DMG-C-Tree Mitigation Plan_v2.dwg

This document, together with the concepts and designs presented herein, as an instrument of service, is intended only for the specific purpose and client for which it was prepared. Reuse of and improper reliance on this document without written authorization and adaptation by Kimley-Horn and Associates, Inc. shall be without liability to Kimley-Horn and Associates, Inc.



TREE LEGEND

#

INDICATES THE NUMBER OF 3" DIAMETER TREES TO BE REPLANTED ON THE SPECIFIC LOT WITH THE CONSTRUCTION OF THE HOME.

#

INDICATES THE NUMBER OF 4" DIAMETER TREES TO BE REPLANTED ON THE SPECIFIC LOT WITH THE CONSTRUCTION OF THE HOME.

MARSHALL RIDGE - PHASE 1 SOUTH - TREE PLANTING SUMMARY					
LOT	BLOCK	NO. OF 3" TREES PER THE APPROVED TREE MITIGATION PLAN DATED 5/21/2014	NO. OF 3" TREES PER THIS PLAN	NET NO. OF 3" TREES PER THIS PLAN	NO. OF 4" TREES PER THIS PLAN
		A	B	C=(B-A)	D
19	D	2	2	0	3
20	D	4	2	-2	3
21	D	3	2	-1	2
23	D	3	2	-1	3
2	G	2	0	-2	2
3	G	2	0	-2	4
17	G	5	5	0	4
18	G	4	3	-1	2
19	G	3	3	0	2
TOTALS		28	19	-9	25

MITIGATION SUMMARY	
NO. OF INCHES OF TREES TO BE REMOVED WITH HOME CONSTRUCTION - REQUIRING MITIGATION	421
ADDITIONAL NO. OF INCHES OF TREES TO BE PLANTED PER THIS PLAN	73.0
MITIGATION BANK CREDIT FROM PREVIOUSLY APPROVED TREE MITIGATION PLAN DATED 5/21/2014	60
REMAINING INCHES TO BE MITIGATED WITH FEE PAYMENT	288.0

MARSHALL RIDGE
PHASE 1 SOUTH
CITY OF KELLER
TARRANT COUNTY, TEXAS

SHEET NUMBER
C-04

MITIGATION PLAN
BLOCK D - LOTS 19-21, & 23;
BLOCK G - LOTS 17-19, & 2-3.

KHA PROJECT
061179160

DATE
MAY 2019

SCALE: AS SHOWN

DESIGNED BY: BRM

DRAWN BY: MTH

CHECKED BY: BRM

Kimley»Horn

© 2019 KIMLEY-HORN AND ASSOCIATES, INC.
5750 GENESIS COURT, SUITE 200, FRISCO, TX 75034
PHONE: 972-335-3580 FAX: 972-335-3779
WWW.KIMLEY-HORN.COM
TEXAS REGISTERED ENGINEERING FIRM F-928

No.

REVISIONS

DATE

BY