

# 2019 Population Estimates

North Central Texas Council of Governments | April 2019



Photo courtesy of Scott Rae

## Population Estimates

Population estimates are based on current housing inventories for cities in the NCTCOG Region with populations of 1,000 or more. Each city is listed in the county that contains the majority of the city's population.

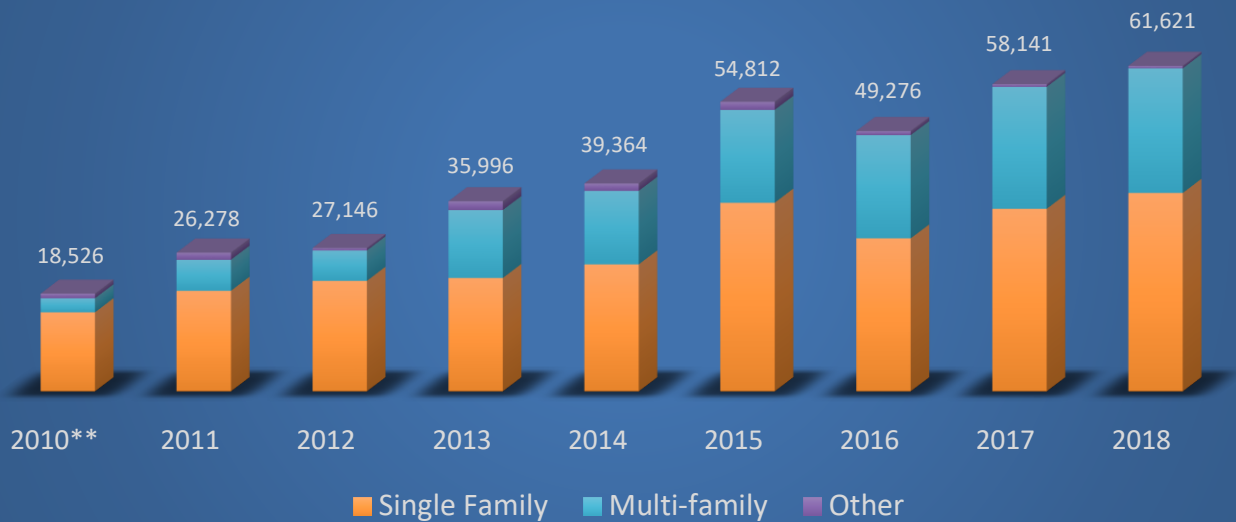
## Executive Summary

The estimated January 1, 2019 population for the NCTCOG region is 7,548,400. Last year, the region added 158,000 people. In 2018, 14 cities grew by 10% or more. Fort Worth led the region in growth, adding more than 19,000 people last year while Dallas grew by more than 15,000, followed by Frisco with 10,620. Collin, Denton, Dallas, and Tarrant counties each added more than 25,000 people last year, accounting for 83% of the regional growth. The region has added more than 1 million new residents since 2010. Collin County is now home to more than 1,000,000 residents; Tarrant County has grown to over 2,000,000 residents.

Residential construction continued its upward trend as the region continues to see an increase in employment and population growth. Since 2010, the region has grown by over 15% creating a demand for housing. A total of 37,500 single family units were completed in 2018, while more than 23,000 multi-family units completed last year. The city of Dallas led the way in residential units with more than 9,000 completions last year, and 79% of these new units were multi-family. Dallas accounted for 30% of all new multi-family units added to the region in 2018. Fort Worth had more than 7,000 residential completions. The top 10 cities in new construction accounted for 58% of all units built last year. North Central Texas added nearly twice as many new residents in 2018 than it did in 2011, when the economy was starting to recover from the great recession that started in 2008.

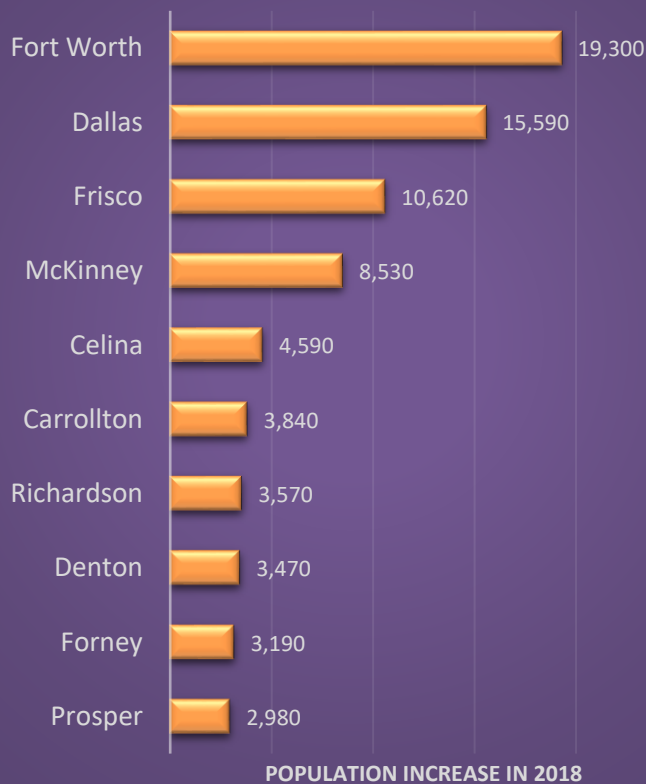
# Highlights

## NCTCOG Region - Net Housing Units Added by Year

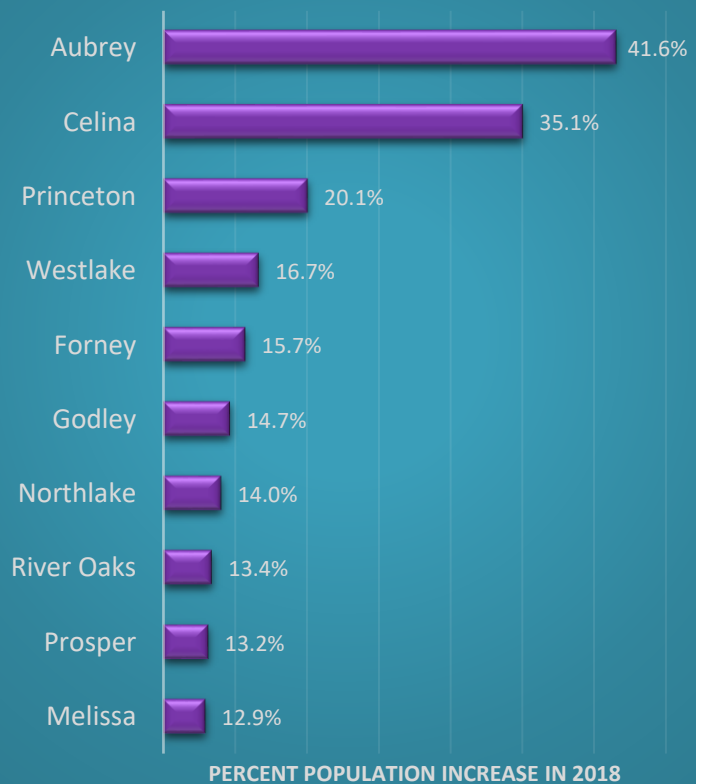


\*\*2010 shows changes for a partial year, from April 1 to December 31.

## Cities with the Most Growth in 2018



## Fastest Growing Cities in 2018



## 2019 Population Estimates, City by County

	2010 Census Population April 1	2018 Estimate January 1	2019 Estimate January 1	2018 - 2019 Absolute Change	2018 - 2019 Percent Change
<b>Collin County</b>	<b>782,341</b>	<b>969,780</b>	<b>1,010,330</b>	<b>40,550</b>	<b>4.2%</b>
Allen	84,246	96,870	99,020	2,150	2.2%
Anna	8,249	13,690	15,010	1,320	9.6%
Celina	6,028	13,090	17,680	4,590	35.1%
Fairview	7,248	9,520	9,610	90	0.9%
Farmersville	3,301	3,330	3,340	10	0.3%
Frisco	116,989	172,940	183,560	10,620	6.1%
Josephine	812	1,450	1,550	100	6.9%
Lavon	2,219	3,510	3,860	350	10.0%
Lowry Crossing	1,711	1,710	1,710	-	0.0%
Lucas	5,166	7,710	7,960	250	3.2%
McKinney	131,117	179,970	188,500	8,530	4.7%
Melissa	4,695	9,580	10,820	1,240	12.9%
Murphy	17,708	20,060	20,080	20	0.1%
Parker	3,811	4,600	4,840	240	5.2%
Plano	259,841	281,390	284,070	2,680	1.0%
Princeton	6,807	10,560	12,680	2,120	20.1%
Prosper	9,423	22,650	25,630	2,980	13.2%
St. Paul	1,066	1,090	1,090	-	0.0%
Wylie	41,427	49,500	51,730	2,230	4.5%
Split Cities Adjustment	31,426	11,090	9,360		
Remainder of County	39,051	55,470	58,230	2,760	5.0%

	2010 Census Population April 1	2018 Estimate January 1	2019 Estimate January 1	2018 - 2019 Absolute Change	2018 - 2019 Percent Change
<b>Dallas County</b>	<b>2,368,139</b>	<b>2,529,150</b>	<b>2,554,770</b>	<b>25,620</b>	<b>1.0%</b>
Addison	13,056	15,760	15,790	30	0.2%
Balch Springs	23,728	24,660	24,740	80	0.3%
Cedar Hill	45,028	47,480	47,570	90	0.2%
Cockrell Hill	4,193	4,170	4,190	20	0.5%
Coppell	38,659	41,100	41,290	190	0.5%
Dallas	1,197,816	1,286,380	1,301,970	15,590	1.2%
DeSoto	49,047	52,870	53,200	330	0.6%
Duncanville	38,524	39,470	39,510	40	0.1%
Farmers Branch	28,616	31,590	31,780	190	0.6%
Garland	226,876	236,030	237,270	1,240	0.5%
Glenn Heights*	11,278	11,680	11,680	-	0.0%
Grand Prairie	175,396	189,430	191,720	2,290	1.2%
Highland Park	8,564	8,520	8,500	(20)	(0.2%)

	2010 Census Population April 1	2018 Estimate January 1	2019 Estimate January 1	2018 - 2019 Absolute Change	2018 - 2019 Percent Change
Hutchins	5,338	5,950	6,210	260	4.4%
Irving	216,290	237,490	240,420	2,930	1.2%
Lancaster	36,361	37,880	38,400	520	1.4%
Mesquite	139,824	143,350	145,030	1,680	1.2%
Richardson	99,223	110,140	113,710	3,570	3.2%
Rowlett	56,199	58,830	59,300	470	0.8%
Sachse	20,329	24,720	24,910	190	0.8%
Seagoville	14,835	16,180	16,620	440	2.7%
Sunnyvale	5,130	5,540	5,580	40	0.7%
University Park	23,068	22,890	22,910	20	0.1%
Wilmer*	3,682	4,290	4,290	-	0.0%
Split Cities Adjustment	(120,096)	(135,210)	(139,780)		
Remainder of County	7,175	7,960	7,960	-	0.0%

	2010 Census Population April 1	2018 Estimate January 1	2019 Estimate January 1	2018 - 2019 Absolute Change	2018 - 2019 Percent Change
<b>Denton County</b>	<b>662,614</b>	<b>844,260</b>	<b>874,240</b>	<b>29,980</b>	<b>3.6%</b>
Argyle	3,282	4,040	4,170	130	3.2%
Aubrey	2,595	3,200	4,530	1,330	41.6%
Bartonville	1,469	1,680	1,710	30	1.8%
Carrollton	119,097	132,330	136,170	3,840	2.9%
Copper Canyon	1,334	1,430	1,430	-	0.0%
Corinth	19,935	21,030	21,260	230	1.1%
Cross Roads	1,563	1,980	2,200	220	11.1%
Denton	113,383	130,990	134,460	3,470	2.6%
Double Oak	2,867	2,960	2,970	10	0.3%
Flower Mound	64,669	73,130	76,030	2,900	4.0%
Hickory Creek	3,247	4,430	4,560	130	2.9%
Highland Village	15,056	15,540	15,650	110	0.7%
Justin	3,246	3,790	4,050	260	6.9%
Krugerville	1,662	1,810	1,840	30	1.7%
Krum	4,157	4,900	4,910	10	0.2%
Lake Dallas	7,105	7,260	7,260	-	0.0%
Lewisville	95,290	104,780	105,640	860	0.8%
Little Elm	25,898	42,040	44,530	2,490	5.9%
Northlake	1,724	3,630	4,140	510	14.0%
Oak Point	2,786	3,440	3,680	240	7.0%
Pilot Point	3,856	4,120	4,260	140	3.4%
Ponder	1,395	2,330	2,390	60	2.6%
Providence	4,786	6,550	6,630	80	1.2%
Roanoke	5,962	8,330	8,530	200	2.4%

	2010 Census Population April 1	2018 Estimate January 1	2019 Estimate January 1	2018 - 2019 Absolute Change	2018 - 2019 Percent Change
Sanger	6,916	8,400	8,800	400	4.8%
Shady Shores	2,612	2,680	2,670	(10)	(0.4%)
The Colony	36,328	42,090	44,370	2,280	5.4%
Trophy Club	8,024	11,370	11,480	110	1.0%
Split Cities Adjustment	35,292	67,530	73,430		
Remainder of County	67,078	126,470	130,490	4,020	3.2%

	2010 Census Population April 1	2018 Estimate January 1	2019 Estimate January 1	2018 - 2019 Absolute Change	2018 - 2019 Percent Change
<b>Ellis County</b>	<b>149,610</b>	<b>183,360</b>	<b>189,820</b>	<b>6,460</b>	<b>3.5%</b>
Ennis	18,513	18,910	19,750	840	4.4%
Ferris	2,436	2,690	2,930	240	8.9%
Italy	1,863	1,850	1,850	-	0.0%
Midlothian	18,037	30,400	32,100	1,700	5.6%
Oak Leaf	1,298	1,380	1,390	10	0.7%
Ovilla	3,492	4,040	4,090	50	1.2%
Palmer	2,000	2,130	2,170	40	1.9%
Red Oak	10,769	12,790	13,400	610	4.8%
Waxahachie	29,621	35,550	37,040	1,490	4.2%
Split Cities Adjustment	3,154	3,480	3,510		
Remainder of County	58,427	70,140	71,590	1,450	2.1%

	2010 Census Population April 1	2018 Estimate January 1	2019 Estimate January 1	2018 - 2019 Absolute Change	2018 - 2019 Percent Change
<b>Erath County</b>	<b>37,890</b>	<b>44,200</b>	<b>44,700</b>	<b>500</b>	<b>1.1%</b>
Dublin	3,654	3,790	3,800	10	0.3%
Stephenville	17,123	22,280	22,660	380	1.7%
Remainder of County	17,113	18,130	18,240	110	0.6%

	2010 Census Population April 1	2018 Estimate January 1	2019 Estimate January 1	2018 - 2019 Absolute Change	2018 - 2019 Percent Change
<b>Hood County</b>	<b>51,182</b>	<b>65,060</b>	<b>65,960</b>	<b>900</b>	<b>1.4%</b>
DeCordova	2,683	2,800	2,810	10	0.4%
Granbury	7,978	9,520	9,790	270	2.8%
Split Cities Adjustment	(18)	(20)	(20)		
Remainder of County	40,539	52,760	53,380	620	1.2%

	2010 Census Population April 1	2018 Estimate January 1	2019 Estimate January 1	2018 - 2019 Absolute Change	2018 - 2019 Percent Change
<b>Hunt County</b>	<b>86,129</b>	<b>95,960</b>	<b>97,410</b>	<b>1,450</b>	<b>1.5%</b>
Caddo Mills	1,338	1,480	1,500	20	1.4%
Commerce	8,078	8,260	8,330	70	0.8%
Greenville	25,557	27,060	27,600	540	2.0%



	2010 Census Population April 1	2018 Estimate January 1	2019 Estimate January 1	2018 - 2019 Absolute Change	2018 - 2019 Percent Change
Quinlan	1,394	1,440	1,440	-	0.0%
West Tawakoni*	1,576	1,620	1,620	-	0.0%
Wolfe City	1,412	1,420	1,420	-	0.0%
Split Cities Adjustment	356	1,590	1,780		
Remainder of County	46,418	53,090	53,720	630	1.2%

	2010 Census Population April 1	2018 Estimate January 1	2019 Estimate January 1	2018 - 2019 Absolute Change	2018 - 2019 Percent Change
<b>Johnson County</b>	<b>150,934</b>	<b>169,160</b>	<b>173,700</b>	<b>4,540</b>	<b>2.7%</b>
Alvarado	3,785	4,360	4,530	170	3.9%
Burleson	36,690	44,860	45,620	760	1.7%
Cleburne	29,337	30,500	30,770	270	0.9%
Godley	1,009	1,090	1,250	160	14.7%
Grandview	1,561	1,650	1,700	50	3.0%
Joshua	5,910	6,770	6,930	160	2.4%
Keene	6,106	6,290	6,310	20	0.3%
Venus	2,960	3,730	3,730	-	0.0%
Split Cities Adjustment	(5,608)	(6,280)	(5,120)		
Remainder of County	69,184	76,190	77,980	1,790	2.3%

	2010 Census Population April 1	2018 Estimate January 1	2019 Estimate January 1	2018 - 2019 Absolute Change	2018 - 2019 Percent Change
<b>Kaufman County</b>	<b>103,350</b>	<b>119,670</b>	<b>124,850</b>	<b>5,180</b>	<b>4.3%</b>
Combine	1,942	2,030	2,070	40	2.0%
Crandall*	2,858	3,230	3,230	-	0.0%
Forney	14,661	20,280	23,470	3,190	15.7%
Kaufman	6,703	6,730	6,780	50	0.7%
Kemp	1,154	1,170	1,220	50	4.3%
Mabank	3,035	3,320	3,570	250	7.5%
Talty	1,535	2,410	2,530	120	5.0%
Terrell	15,816	16,650	16,740	90	0.5%
Split Cities Adjustment	(1,281)	(1,360)	(1,490)		
Remainder of County	56,927	65,210	66,730	1,520	2.3%

	2010 Census Population April 1	2018 Estimate January 1	2019 Estimate January 1	2018 - 2019 Absolute Change	2018 - 2019 Percent Change
<b>Navarro County</b>	<b>47,735</b>	<b>49,740</b>	<b>50,250</b>	<b>510</b>	<b>1.0%</b>
Corsicana	23,770	24,120	24,180	60	0.2%
Kerens	1,573	1,710	1,710	-	0.0%
Rice	923	1,040	1,040	-	0.0%
Remainder of County	21,469	22,870	23,320	450	2.0%

	2010 Census Population April 1	2018 Estimate January 1	2019 Estimate January 1	2018 - 2019 Absolute Change	2018 - 2019 Percent Change
<b>Palo Pinto County</b>	<b>28,111</b>	<b>28,710</b>	<b>28,820</b>	<b>110</b>	<b>0.4%</b>
Mineral Wells	16,788	16,790	16,780	(10)	(0.1%)
Split Cities Adjustment	(2,144)	(2,140)	(2,140)		
Remainder of County	13,467	14,060	14,180	120	0.9%

	2010 Census Population April 1	2018 Estimate January 1	2019 Estimate January 1	2018 - 2019 Absolute Change	2018 - 2019 Percent Change
<b>Parker County</b>	<b>116,927</b>	<b>131,210</b>	<b>134,620</b>	<b>3,410</b>	<b>2.6%</b>
Aledo	2,716	4,240	4,240	-	0.0%
Annetta	1,288	2,760	2,780	20	0.7%
Hudson Oaks	1,662	2,120	2,150	30	1.4%
Reno	2,494	2,620	2,700	80	3.1%
Springtown	2,658	2,720	2,760	40	1.5%
Weatherford	25,250	27,900	28,090	190	0.7%
Willow Park	3,982	4,800	4,910	110	2.3%
Split Cities Adjustment	4,339	5,070	6,300		
Remainder of County	72,538	78,980	80,690	1,710	2.2%

	2010 Census Population April 1	2018 Estimate January 1	2019 Estimate January 1	2018 - 2019 Absolute Change	2018 - 2019 Percent Change
<b>Rockwall County</b>	<b>78,337</b>	<b>97,990</b>	<b>101,020</b>	<b>3,030</b>	<b>3.1%</b>
Fate	6,434	13,240	14,940	1,700	12.8%
Heath	6,921	8,180	8,530	350	4.3%
McLendon-Chisholm	1,373	3,270	3,470	200	6.1%
Rockwall	37,490	43,750	44,110	360	0.8%
Royse City	9,349	12,060	12,400	340	2.8%
Split Cities Adjustment	6,775	4,740	4,490		
Remainder of County	9,995	12,750	13,080	330	2.6%

	2010 Census Population April 1	2018 Estimate January 1	2019 Estimate January 1	2018 - 2019 Absolute Change	2018 - 2019 Percent Change
<b>Somervell County</b>	<b>8,490</b>	<b>9,640</b>	<b>9,820</b>	<b>180</b>	<b>1.9%</b>
Glen Rose	2,444	2,540	2,560	20	0.8%
Remainder of County	6,046	7,100	7,260	160	2.3%

	2010 Census Population April 1	2018 Estimate January 1	2019 Estimate January 1	2018-2019 Absolute Change	2018-2019 Percent Change
<b>Tarrant County</b>	<b>1,809,034</b>	<b>1,989,810</b>	<b>2,024,030</b>	<b>34,220</b>	<b>1.7%</b>
Arlington	365,438	383,950	386,180	2,230	0.6%
Azle	10,947	12,140	12,670	530	4.4%
Bedford	46,979	48,600	48,810	210	0.4%
Benbrook	21,234	22,760	22,920	160	0.7%
Blue Mound	2,394	2,390	2,390	-	0.0%
Colleyville	22,807	25,010	25,370	360	1.4%

	2010 Census Population April 1	2018 Estimate January 1	2019 Estimate January 1	2018-2019 Absolute Change	2018-2019 Percent Change
Crowley	12,838	14,660	15,540	880	6.0%
Dalworthington Gardens	2,259	2,330	2,330	-	0.0%
Edgecliff Village	2,776	3,220	3,220	-	0.0%
Eules	51,277	55,170	56,160	990	1.8%
Everman	6,108	6,090	6,090	-	0.0%
Forest Hill	12,355	12,840	12,950	110	0.9%
Fort Worth	741,206	829,560	848,860	19,300	2.3%
Grapevine	46,334	49,240	51,370	2,130	4.3%
Haltom City	42,409	42,740	42,730	(10)	0.0%
Haslet	1,517	1,730	1,740	10	0.6%
Hurst	37,337	38,410	38,510	100	0.3%
Keller	39,627	44,940	45,090	150	0.3%
Kennedale	6,763	7,420	7,650	230	3.1%
Lake Worth	4,584	4,730	4,710	(20)	(0.4%)
Lakeside	1,307	2,100	2,110	10	0.5%
Mansfield	56,368	65,660	68,520	2,860	4.4%
North Richland Hills	63,343	67,530	67,980	450	0.7%
Pantego	2,394	2,480	2,480	-	0.0%
Pelican Bay	1,547	1,720	1,900	180	10.5%
Richland Hills	7,801	7,920	7,920	-	0.0%
River Oaks	7,427	7,310	8,290	980	13.4%
Saginaw	19,806	21,730	22,380	650	3.0%
Sansom Park	4,686	5,050	5,450	400	7.9%
Southlake	26,575	29,580	30,010	430	1.5%
Watauga	23,497	23,610	23,770	160	0.7%
Westlake	992	1,380	1,610	230	16.7%
Westworth Village	2,472	2,620	2,640	20	0.8%
White Settlement	16,116	17,380	17,600	220	1.3%
Split Cities Adjustment	43,504	47,150	45,190		
Remainder of County	54,010	78,660	80,890	2,230	2.8%

	2010 Census Population April 1	2018 Estimate January 1	2019 Estimate January 1	2018 - 2019 Absolute Change	2018 - 2019 Percent Change
<b>Wise County</b>	<b>59,127</b>	<b>62,700</b>	<b>64,060</b>	<b>1,360</b>	<b>2.2%</b>
Alvord	1,334	1,350	1,360	10	0.7%
Aurora	1,220	1,440	1,440	-	0.0%
Boyd	1,207	1,380	1,400	20	1.4%
Bridgeport	5,976	6,150	6,170	20	0.3%
Chico	1,002	1,010	1,010	-	0.0%
Decatur	6,042	6,600	7,190	590	8.9%
New Fairview*	1,258	1,480	1,480	-	0.0%
Newark	1,005	1,120	1,140	20	1.8%
Rhome	1,522	1,620	1,650	30	1.9%
Runaway Bay	1,286	1,370	1,390	20	1.5%
Split Cities Adjustment	3,597	3,600	3,600		
Remainder of County	33,678	35,580	36,230	650	1.8%

\*City declined to provide data.

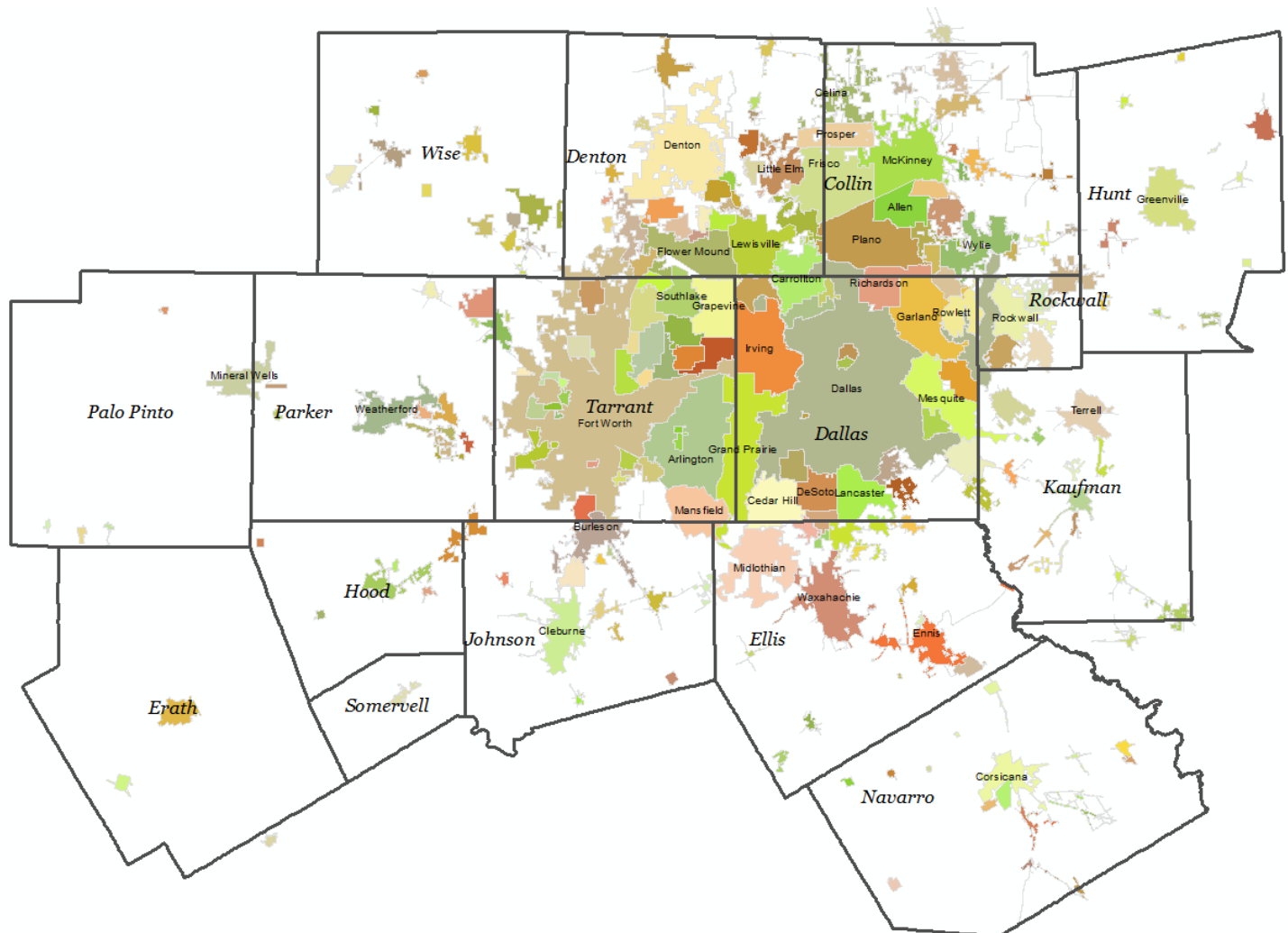


### Population by Planning Area

	2000 U.S. Census April 1	2010 U.S. Census April 1	2018 NCTCOG Estimate January 1	2019 NCTCOG Estimate January 1
16-County NCTCOG Region	5,309,277	6,539,950	7,390,400	7,548,400
12-County MPA <sup>^</sup>	5,197,317	6,417,724	7,258,110	7,414,810
<sup>^</sup> The 12 county Dallas-Fort Worth Metropolitan Planning Area (MPA) consists of the following counties:				
	Collin	Ellis	Johnson	Rockwall
	Dallas	Hood	Kaufman	Tarrant
	Denton	Hunt	Parker	Wise

Source: U.S. Census Bureau, NCTCOG Population Estimates

## NCTCOG Region



This publication and other data produced by RIS can be found on the Regional Data Center: <https://data-nctcoggis.opendata.arcgis.com/>.

## 2019 Population Estimates Methodology

NCTCOG uses the housing unit method for estimating current year population:

Estimated household population = estimated units \* estimated occupancy rate \* estimated persons per occupied unit

The calculation is performed for each unit type (single family, multi-family, other). The results are summed along with an estimate of group quarters population to arrive at a total population estimate. Every year, cities are asked to provide information about changes in housing stock and population in group quarters housing. Cities are also given the opportunity to review figures prior to release. The 2018 population estimates for some cities have been revised. The estimates included herein supersede any prior estimates.

### Split Cities

County population totals are adjusted for cities that have boundaries in more than one county. Cities that extend outside the NCTCOG Region show the city total. However, the portion of the city's population that is not in the region is not included in the county or regional totals. Cities whose boundaries extend into the NCTCOG Region, but do not have a majority of their population within the region are not included in the city listings.

Split Cities			
Azle	Flower Mound	Mabank	Rowlett
Burleson	Fort Worth	Mansfield	Royse City
Carrollton	Frisco	Mesquite	Sachse
Cedar Hill	Garland	Mineral Wells	Seagoville
Celina	Glenn Heights	Newark	Seven Points
Combine	Grand Prairie	Ovilla	Southlake
Coppell	Grapevine	Plano	Springtown
Cresson	Haslet	Prosper	Trophy Club
Crowley	Heath	Reno	Venus
Dallas	Josephine	Richardson	Westlake
Ferris	Lewisville	Roanoke	Wylie

**Disclaimer:** There are a variety of ways to estimate population for a given area. The North Central Texas Council of Governments has selected a method that accommodates the varying level of data available for local communities while focusing on consistency. These estimates were developed for regional planning activities and have not been evaluated for other uses. They are provided as an informational item and are likely to differ from estimates produced by others, including the cities and counties listed herein. The North Central Texas Council of Governments makes no warranty, express or implied, including warranties of merchantability and fitness for a particular purpose. Responsibility for the use of these data lies solely with the user.

## Research and Information Services

NCTCOG's Research and Information Services (RIS) Department provides objective, consistent, and timely information and analysis on development in the region for use in regional and local planning and economic development activities. The substantive focus is on population, employment, and other socio-economic factors; commercial and residential development; and land use. The department also provides support to a regional Geographic Information System (GIS) and NCTCOG's internal computer network.

To learn more about regional data initiatives within RIS, visit: <https://www.nctcog.org/regional-data>.

## North Central Texas Council of Governments

The North Central Texas Council of Governments (NCTCOG) is a voluntary association of, by, and for local governments, and was established to assist local governments in planning for common needs, cooperating for mutual benefit, and coordinating for sound regional development. NCTCOG's purpose is to strengthen both the individual and collective power of local governments and to help them recognize regional opportunities, eliminate unnecessary duplication, and make joint decisions. To learn more about NCTCOG, please visit <https://www.nctcog.org/>.

© 2019 North Central Texas Council of Governments (NCTCOG). All rights reserved.  
This data is the property of NCTCOG and may not be sold, reproduced, distributed or displayed without NCTCOG's express written consent.



North Central Texas COG  
PO Box 5888  
Arlington, TX 76005  
[www.nctcog.org](http://www.nctcog.org)