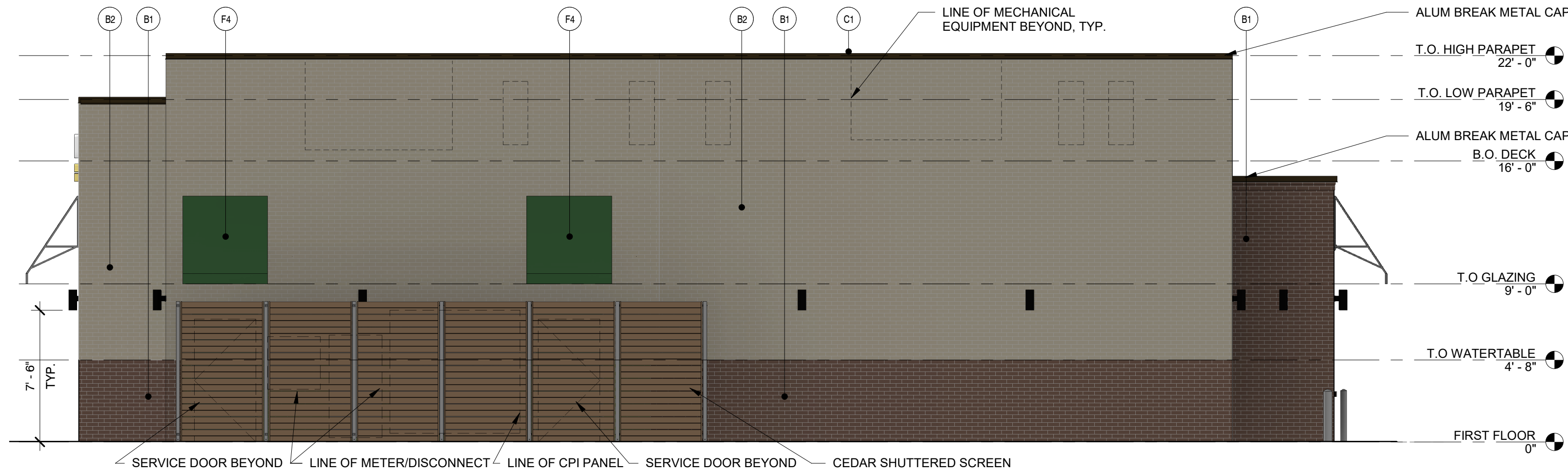


1/10/2020 4:44:21 PM

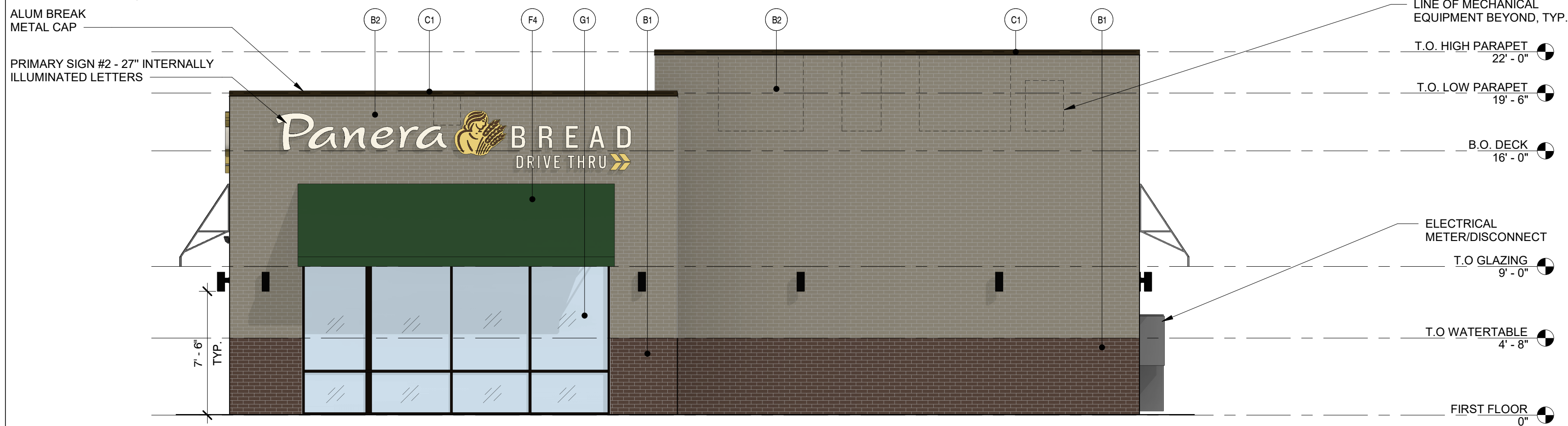
PG 2019.05



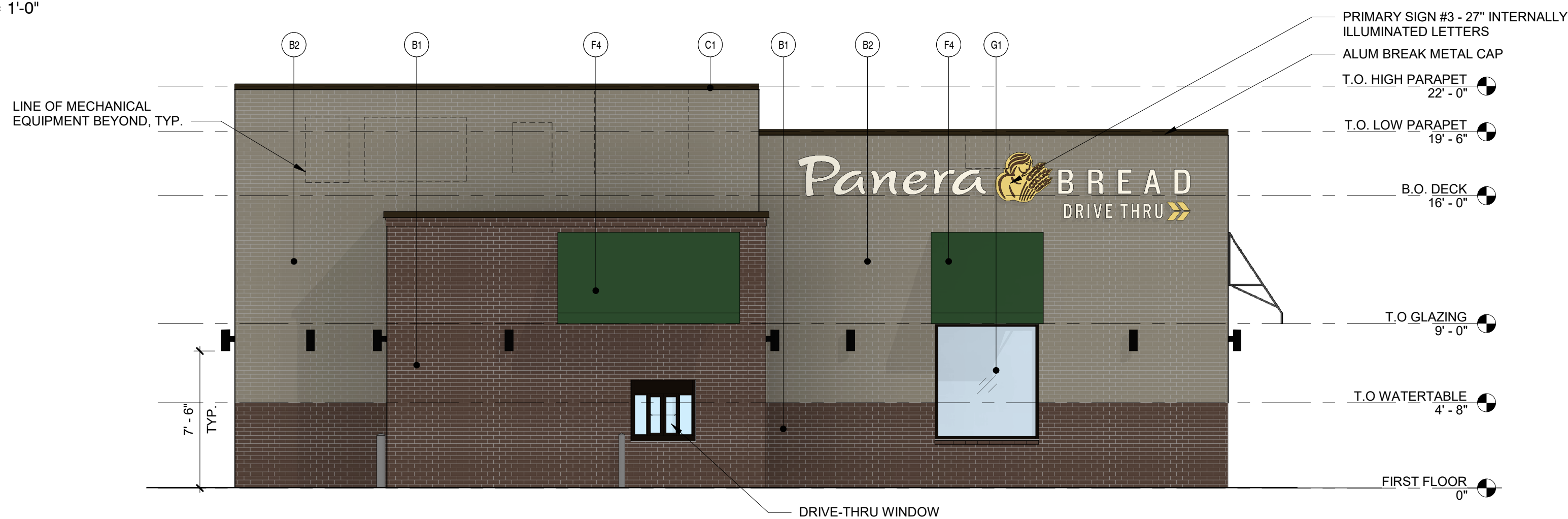
1 SOUTH ELEVATION
3/16" = 1'-0"



2 NORTH ELEVATION
3/16" = 1'-0"



3 EAST ELEVATION
3/16" = 1'-0"



4 WEST ELEVATION
3/16" = 1'-0"

MATERIAL PERCENTAGES

SOUTH ELEVATION: 1,535 SF
B1: 263 SF, 17%
B2: 898 SF, 59%
G1: 374 SF, 24%

NORTH ELEVATION: 1,373 SF
B1: 308 SF, 22%
B2: 1065 SF, 78%
G1: 0 SF, 0%

EAST ELEVATION: 1,137 SF
B1: 170 SF, 15%
B2: 799 SF, 70%
G1: 168 SF, 15%

WEST ELEVATION: 1,093 SF
B1: 441 SF, 40%
B2: 620 SF, 57%
G1: 32 SF, 3%

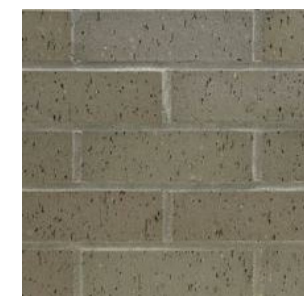
EXTERIOR MATERIALS:

- B1 CLAY BRICK MASONRY VENEER
ENDICOTT, MODULAR SIZE, RUNNING
BOND
COLOR: EXECUTIVE IRONSPOT,
SMOOTH
- B2 CLAY BRICK MASONRY VENEER
ENDICOTT, MODULAR SIZE, RUNNING
BOND
COLOR: LIGHT GREY BLEND, VELOUR
- C1 COPING: PRE-FINISHED, COLOR:
DARK BRONZE
- F4 FABRIC AWNING, COLOR: 314-043
SATTLER GREEN WHEAT DESIGN
FABRIC
- G1 ALUM. STOREFRONT, COLOR:
DARK BRONZE, CLEAR GLAZING

MATERIALS SAMPLE BOARD:



- B1 CLAY BRICK MASONRY VENEER
ENDICOTT, MODULAR SIZE, RUNNING
BOND
COLOR: EXECUTIVE IRONSPOT,
SMOOTH



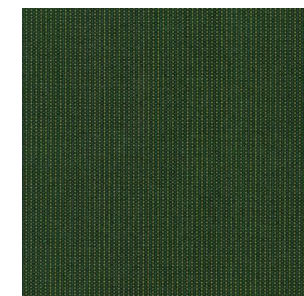
- B2 CLAY BRICK MASONRY VENEER
ENDICOTT, MODULAR SIZE, RUNNING
BOND
COLOR: LIGHT GREY BLEND, VELOUR



- C1 COPING: PRE-FINISHED, COLOR:
DARK BRONZE



- G1 ALUM. STOREFRONT, COLOR:
DARK BRONZE, CLEAR GLAZING



- F4 FABRIC AWNING, COLOR: 314-043
SATTLER GREEN WHEAT DESIGN
FABRIC



5 VIEW FROM NORTHEAST

Bakery-Cafe:

#6186

SYSTEM: G4

Project Team:

NORR

An Ingenium International Company

325 N. La Salle Street, Suite 500
Chicago, IL 60654 U.S.A.
nor.com



William J. Alkemyer, P.E.
353 Marshall Avenue
St. Louis, Missouri 63119
Phone (314) 772-1752
Fax (314) 373-3514

Engineering Consultant

Professional Seal:



Project Title:

ENTITLEMENT DOCUMENTS

Bakery Cafe #6186
KELLER PKWY (FM 1709)
KELLER, TX 76248



COPYRIGHT (C) NORR, INC. ALL RIGHTS RESERVED.
NO PART OF THIS DOCUMENT MAY BE
REPRODUCED, STORED IN A RETRIEVAL SYSTEM,
OR TRANSMITTED IN ANY FORM OR BY ANY MEANS,
ELECTRONIC, MECHANICAL, PHOTOCOPYING,
RECORDING, OR OTHERWISE WITHOUT THE
EXPRESS WRITTEN CONSENT OF NORR INC. ANY
MODIFICATIONS MADE TO THIS DOCUMENT
WITHOUT THE WRITTEN PERMISSION OF NORR INC.
SHALL RENDER IT INVALID AND UNUSABLE.
THIS DRAWING HAS BEEN PREPARED SOLELY FOR
THE USE OF PANERA BREAD AND THERE ARE NO
REPRESENTATIONS OF ANY KIND MADE BY NORR
INC. TO ANY PARTY WITH WHOM NORR INC. HAS
NOT ENTERED INTO A CONTRACT.

No.	Description	Date
	ENTITLEMENT DOCUMENTS	01/10/20

EXTERIOR COLOR
ELEVATIONS

Project Number:

NICH19.0150.00

Drawn By:

AMAUSER

Issue Date:

01/10/20

DPM:

RP

Sheet Number:

A305

CPM:

DC

KB