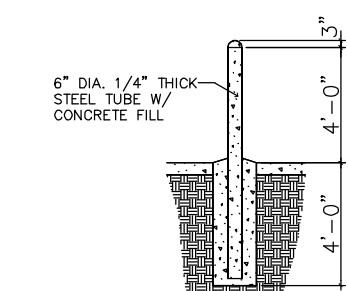
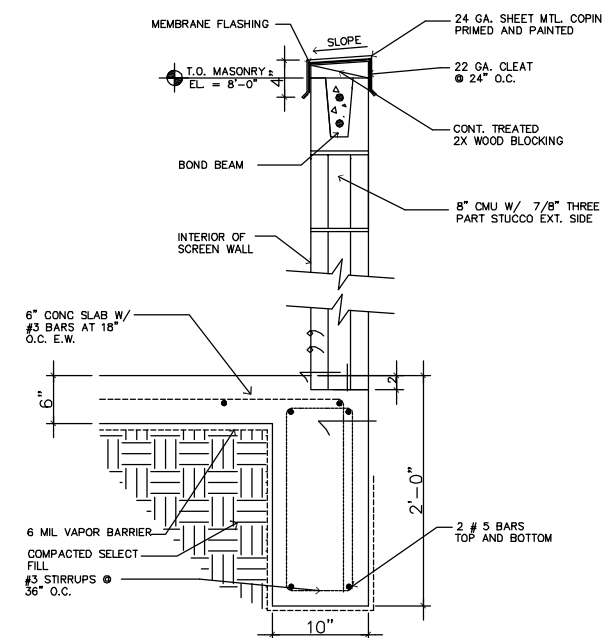
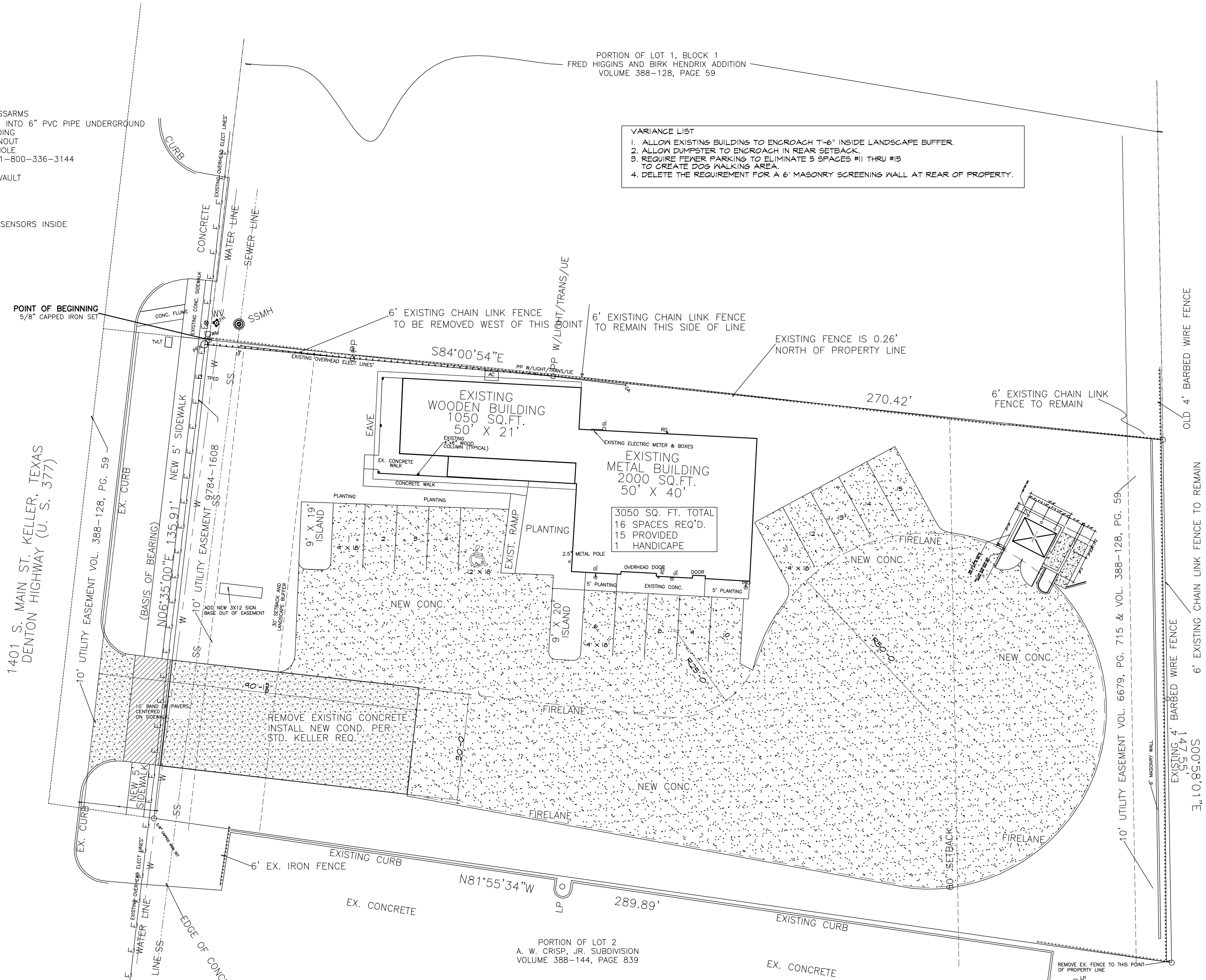


LEGEND:

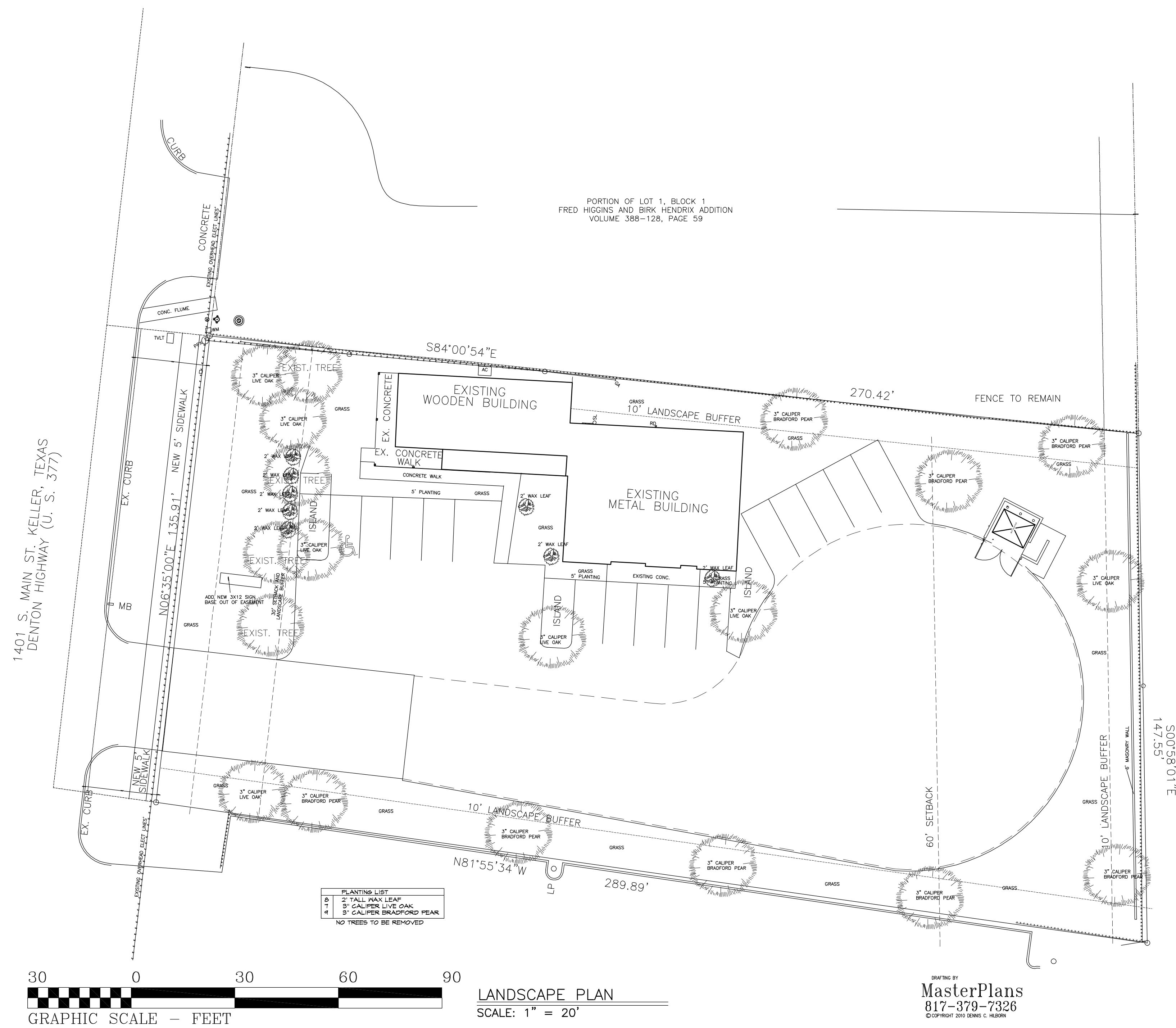
AC = AIR CONDITIONER UNIT
FE = FIRE EXTINGUISHER
FH = FIRE HYDRANT
GA = GUY ANCHOR
LP = LIGHT POLE
MB = METAL MAILBOX
PP = POWER POLE
PPV = POWER POLE WITH CROSSARMS
RD = 4"x4" METAL ROOF DRAIN INTO 6" PVC PIPE UNDERGROUND
SL = SECURITY LIGHT ON BUILDING
SSCO = SANITARY SEWER CLEANOUT
SSMH = SANITARY SEWER MANHOLE
TPED = TELEPHONE PEDESTAL 1-800-336-3144
TRANS = TRANSFORMER
TVLT = "VERIZON" TELEPHONE VAULT
UE = UNDERGROUND ELECTRIC
WM = WATER METER
WV = WATER VALVE
W/ = WITH
8" PVC = VERTICAL PIPE WITH SENSORS INSIDE



DRAWN BY
MasterPlans
817-379-7326
© COPYRIGHT 2010 DENNIS C. HELGREN

SITE/LANDSCAPING
10/5/15
REV. 9/11/19
20-031
SHEET 1 OF 1

KENNETH D. AND MAUREEN A. RYON
VOLUME 12120, PAGE 2154
(REMAINDER 3.04 ACRES)



9/24/2020

From: Stephen Butler

Arborist/Owner | Butler Tree Health | 1700 Little Deer Ln. Fort Worth, TX 76131

To: Jay Kenerly

Distinguished Custom Homes | 5601 Bridge St. Suite 300 Fort Worth, TX 76112

To Whom It May Concern:

The three Live Oaks at the front of the property at 1401 S. Main St. had the T-posts and wires used to stake the trees when planted left on the trees. The trunks of the trees have expanded and grown around the wires that were used to support the trees. I was able to remove one of the wires on the tree closest to the driveway. All the other wires are too far imbedded in the trunks to be removed. Although this is not ideal for the trees, they should survive. The growth above the wires will be stunted until the bark tissue completely grows over the wires and connects back together. After the bark tissue reconnects, the trees should grow just fine with the wires inside the trees.

Sincerely,

Stephen Butler

ISA Certified Arborist TX-4046A

www.ButlerTreeHealth.com