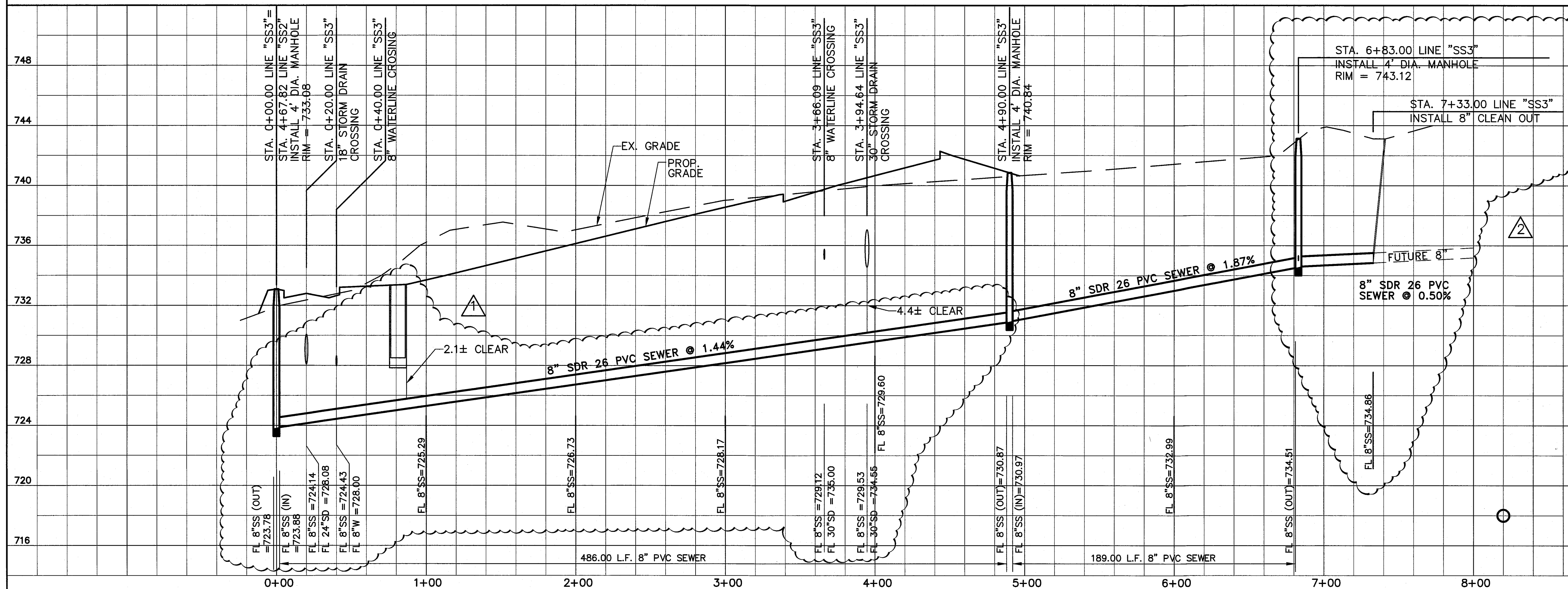
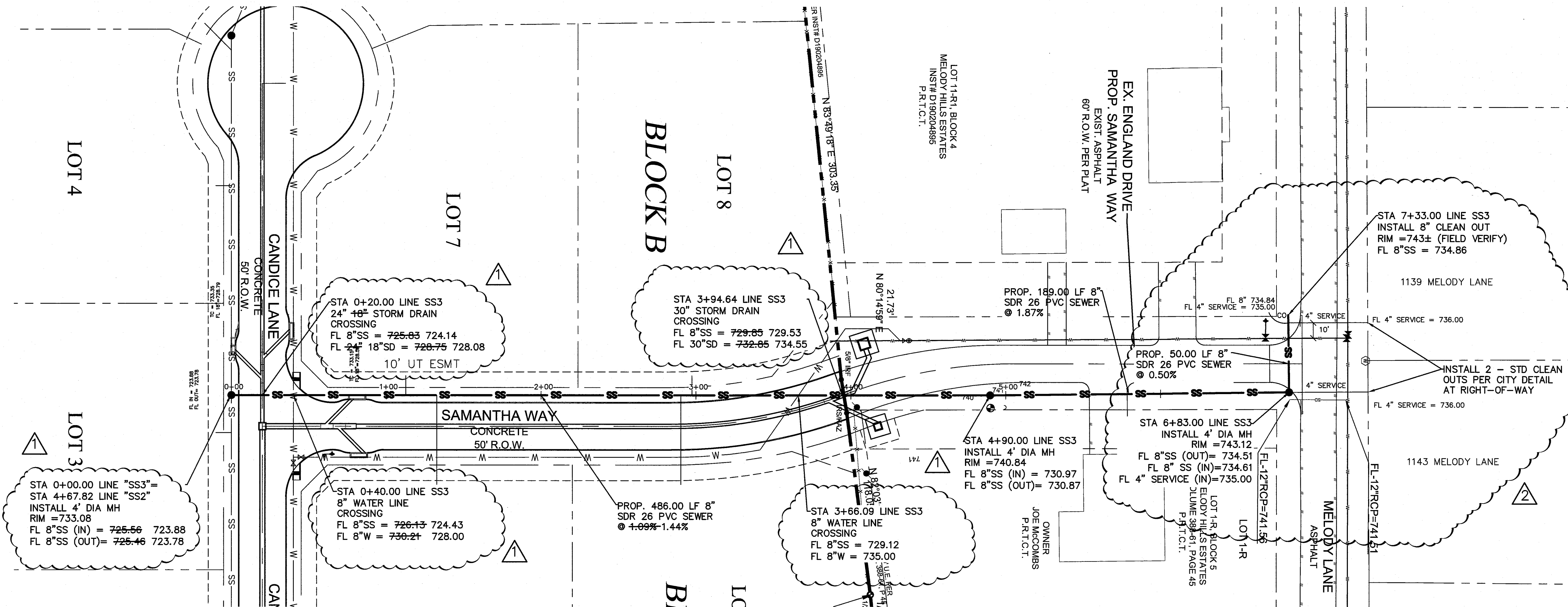
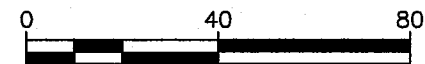
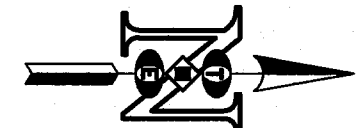



Exhibit "A"



| REVISIONS/ SUBMISSIONS | | Date |
|------------------------|--|---------|
| 1 | LOWERED FOR STORM INLET | 9-23-20 |
| 2 | EXTENDED FOR SERVICE TO 1139 & 1143 MELODY | 1-07-21 |



REVIEWED
CITY OF KELLER

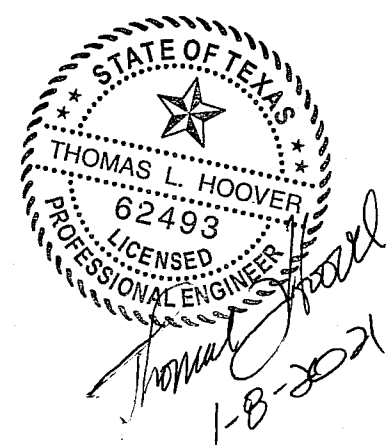
Released for Construction

Date _____

Public Works Director/City Engineer

NOTE

1) The sanitary sewer service lines installed to serve 1139 & 1143 Melody Lane are to be installed via non-open cut methods. Directional drilling or an approved trenchless method may be used.



THOMAS HOOVER ENGINEERING, LLC
P.O. BOX 1808
KELLER, TEXAS 76244
(817) 913-1350 PH.
T.B.P.E. FIRM REGISTRATION NO. 006009

SAMANTHA SPRINGS ESTATES
LOTS 1-8, BLOCK A
LOTS 1-8, BLOCK B
OF THE
SAMANTHA SPRINGS ADDITION
IN THE CITY OF KELLER,
TARRANT COUNTY, TEXAS.
16.502 ACRES OF LAND
CURRENT ZONING - "SF-36" SINGLE FAMILY

SANITARY SEWER LINE "SS3" STA 0+00 TO 6+83

| | | | | | |
|----------|-----|-------|---------------------|-------------|-------|
| DESIGNED | TLH | SCALE | 1"=4' V 1"=40' H | PROJECT NO. | SHEET |
| DRAWN | SDS | DATE | 08-18-20 | | C-16 |
| CHECKED | TLH | | | | of |