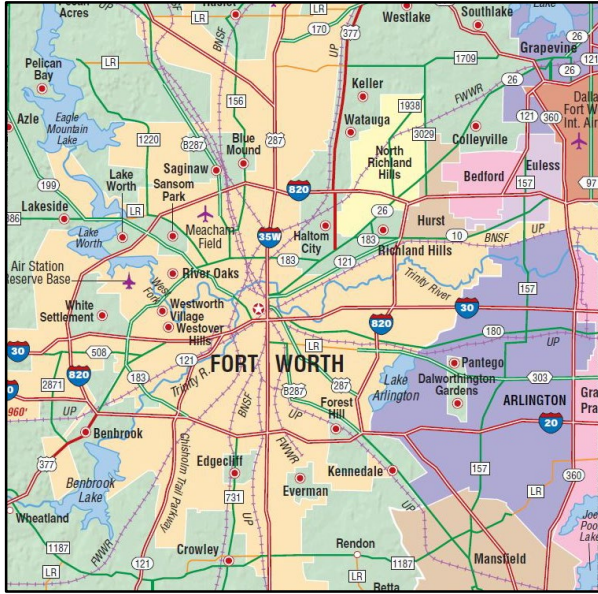


Item H-1

Consider a Resolution of Support for the Tarrant County 2021 Transportation Bond Program and to submit City of Keller, Texas, projects for consideration to be included in said program.

Program Overview



Program Goals

- Increased mobility
- Congestion reduction
- Safety enhancement
- Improved connectivity
- Must begin construction within 5 years

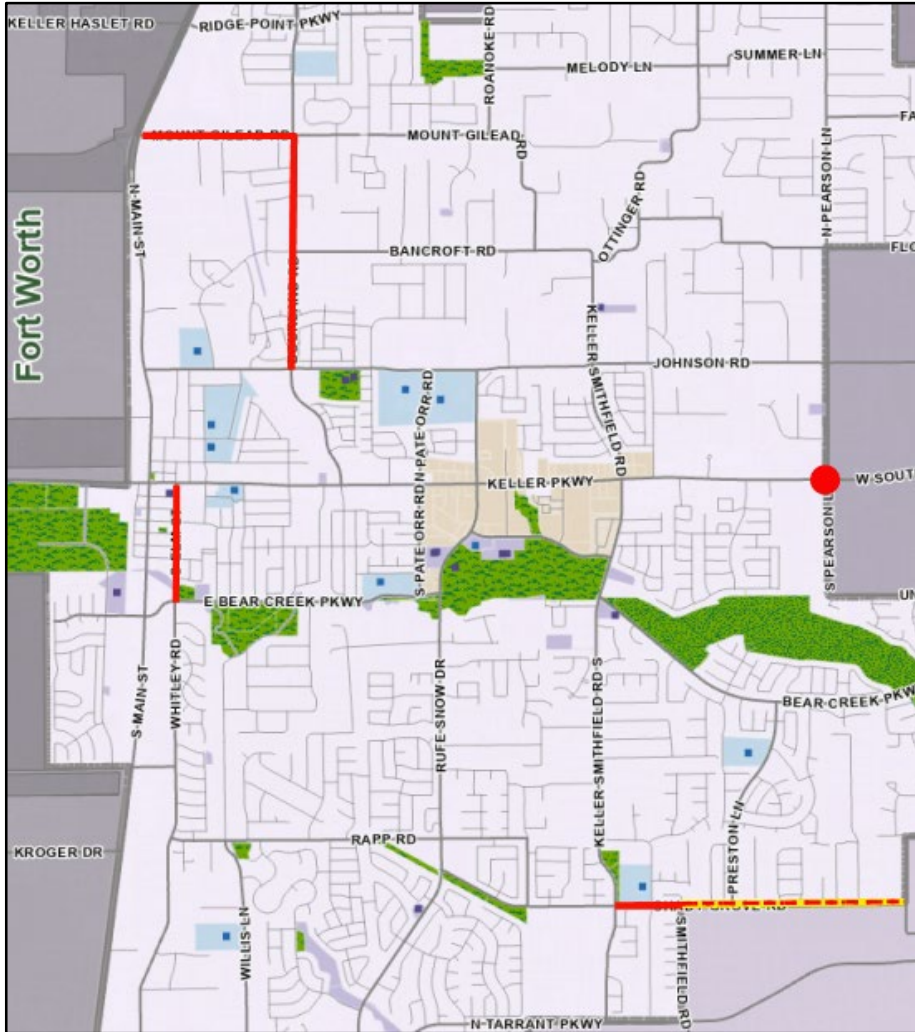
Current Call for Projects

- Designed to leverage local funding resources
- 50% local match is required (reimbursement)
- Neighborhood streets that connect to major thoroughfares are eligible
- Overlays are eligible
- \$200M in county funds

Submission Requirements

- Letter from Mayor
- **City Resolution Of Support**
- Project cost estimate and funding source(s)
- Detailed description (concept drawings, schematics, preliminary designs etc.)
- Project alignment with local planning documents (i.e. Master Thoroughfare Plan)

Projects Submissions



Candidate Projects

- Mt. Gilead from US 377 to Bourland
- Bourland from Mt. Gilead to Johnson
- Elm from Keller Parkway to Bear Creek Pkwy.
- Shady Grove from Keller-Smithfield to Smithfield
- Pearson & 1709 Intersection (Southlake Partnership)
- Shady Grove from Preston to Clay Hibbons (North Richland Hills Partnership)

Conceptual Project Scope

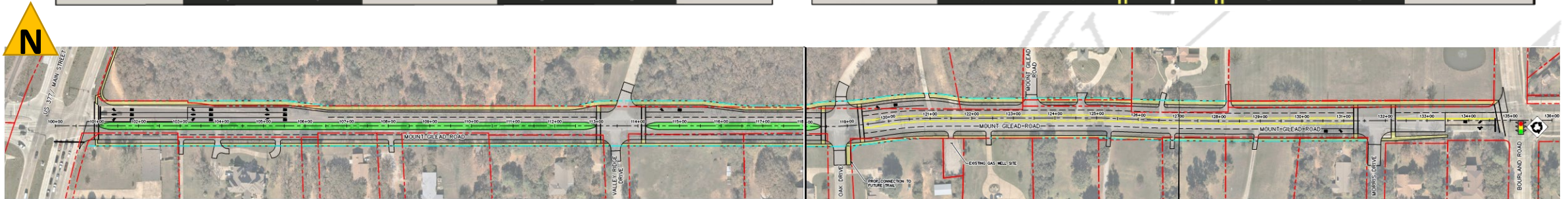
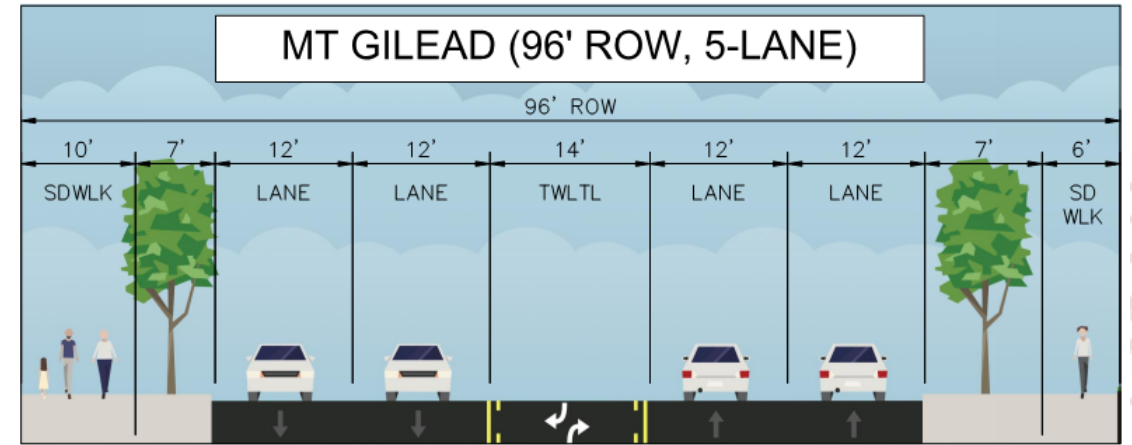
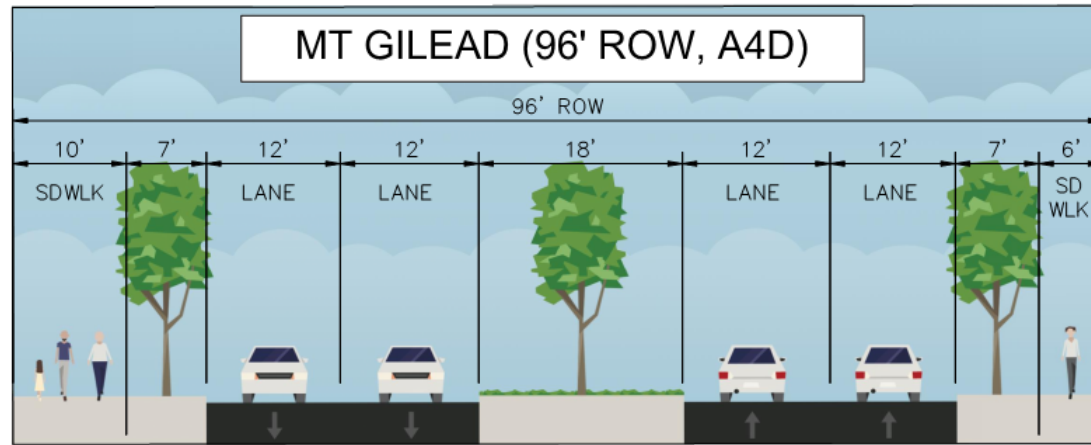
Project Concepts shown on the following slides are based on current Master Plans:

- Major Thoroughfare Plan
- Trails Master Plan
- Future Land Use Plan

Any Projects selected by Tarrant County for inclusion in the bond program will still go through our local public input process and detailed evaluation by City Council to define scope (and adjust cost).

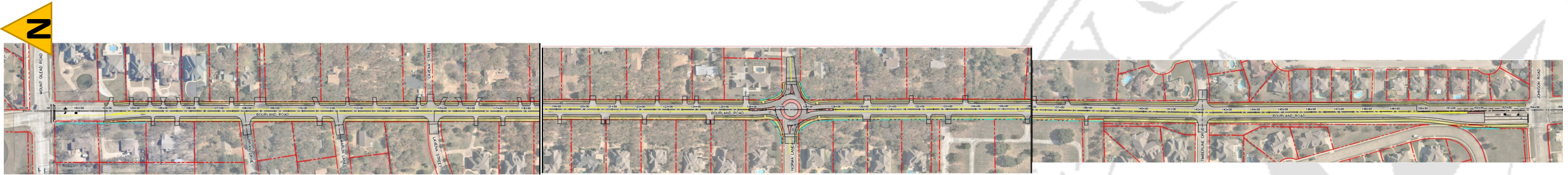
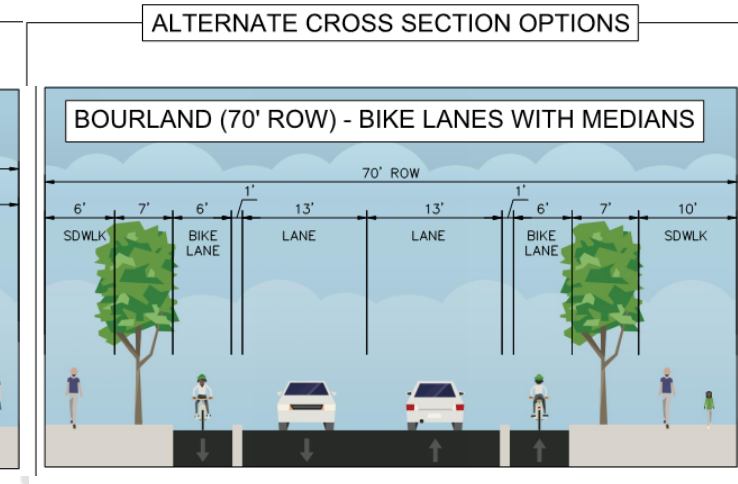
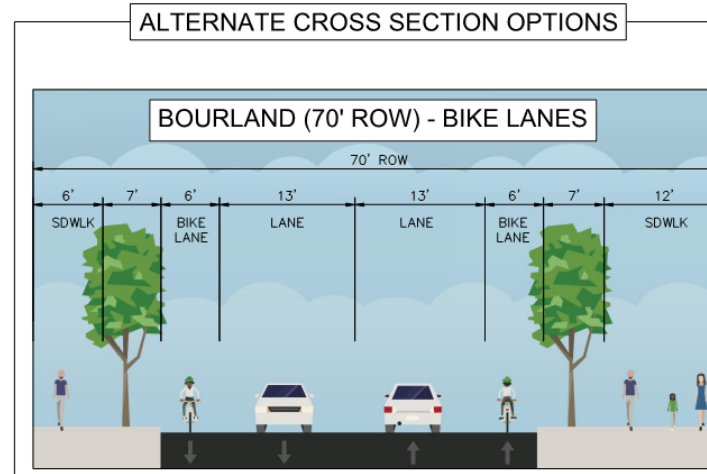
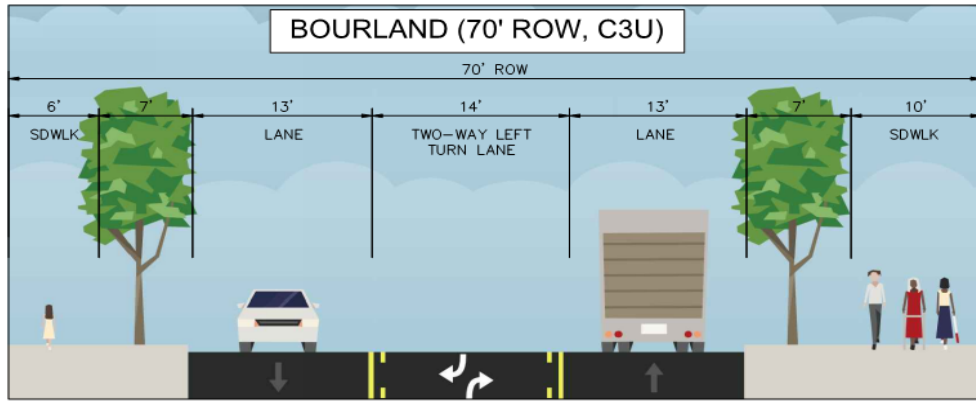
Note: While some of the following projects are currently included in the five-year Capital Improvements Program, the CIP mostly budgets them for reconstruction only rather than any expansion/drainage upgrades/pedestrian improvements.

Mt. Gilead from US 377 to Bourland



Convert a two-lane, bar ditch street to a four- to five-lane roadway with curb & gutter and sidewalks
~0.65 miles in length
~\$18M

Bourland from Mt. Gilead to Johnson

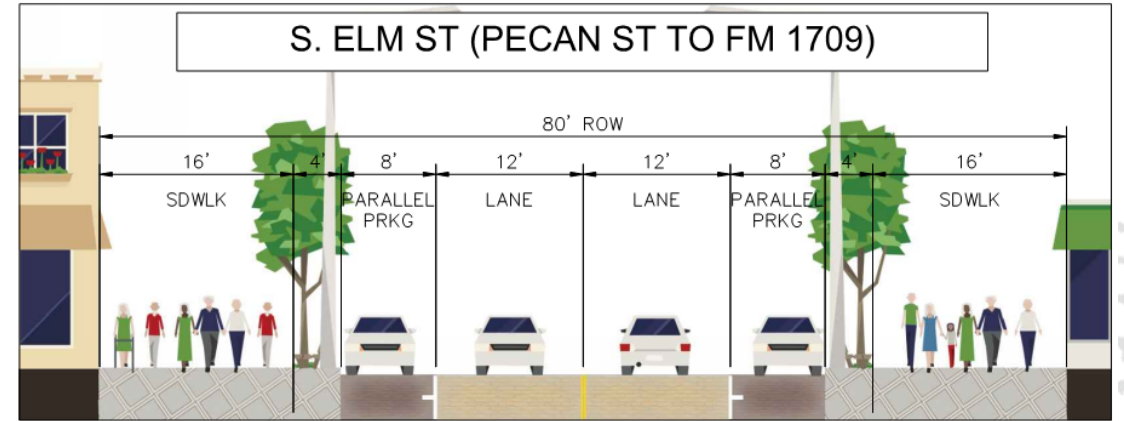
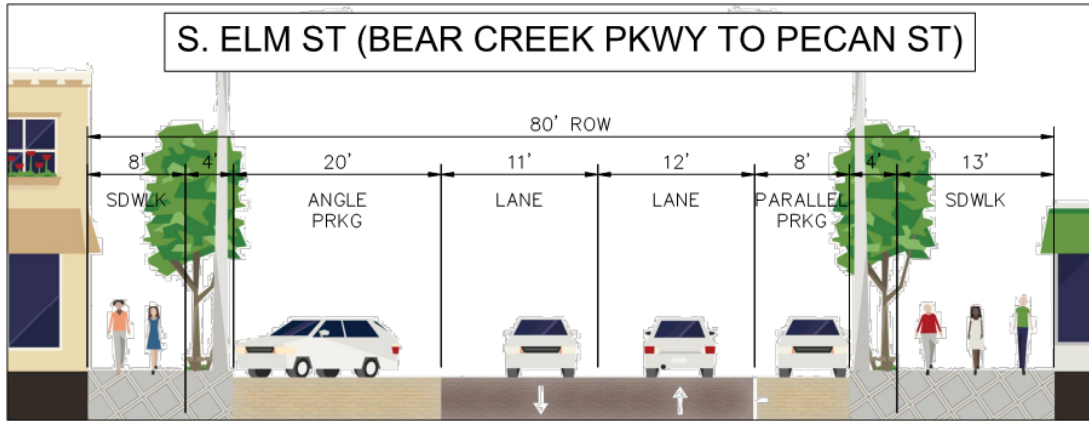


Convert a two-lane, bar ditch roadway to a three-lane roadway with curb & gutter and sidewalks. Bicycle accommodation and intersection control at Bancroft TBD.

~1 mile in length

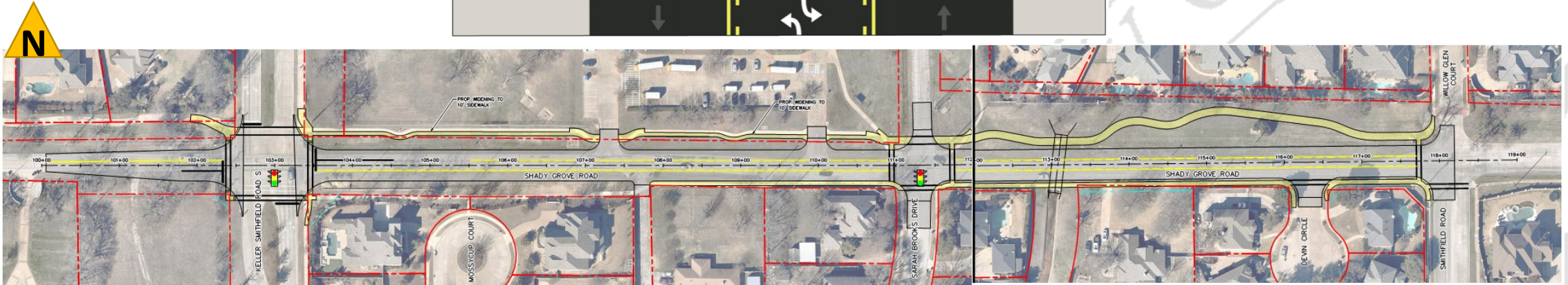
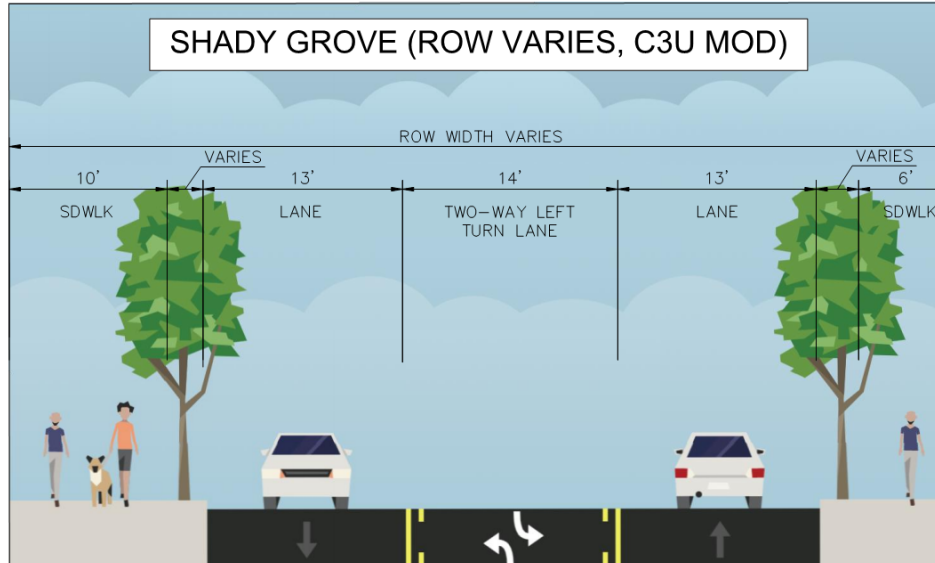
~\$18M

Elm from Keller Parkway to Bear Creek Pkwy



Convert a two-lane, bar ditch street to a two-lane street with curb & gutter and sidewalks
~0.51 miles in length
~\$17M

Shady Grove from Keller-Smithfield to Smithfield



Convert a two-lane, bar ditch street to a three-lane street with curb & gutter and sidewalks
~0.3 miles in length
~\$10M

Excellence • Integrity • Service • Creativity • Communication

Pearson & 1709 Intersection

1709 / Pearson Intersection

Focus Area Safety & Security, Mobility, Infrastructure;
Master Mobility Plan Item MT20

Project Description

Joint project with Keller, TxDOT and Southlake intended to improve mobility at the intersection and safety at the intersection. Proposed work to include ROW acquisition, dedicated turn lanes, widening, improved striping, ped crossings and utility relocations.

Project Phase:

Conceptual Design, 2012

Intersection Capacity Analysis 2017



Funding Summary				
Milestone	Amount	City of Southlake Committed	City of Keller Committed	Requested County Funding
Design	\$ 400,000	\$ 150,000	\$ 50,000	\$ 200,000
ROW/Easement	\$ 960,000	\$ 360,000	\$ 120,000	\$ 480,000
Construction	\$ 1,640,000	\$ 615,000	\$ 205,000	\$ 820,000
Total	\$ 3,000,000	\$ 1,125,000	\$ 375,000	\$ 1,500,000



Construct NB & SB left-turn lanes and improve pedestrian accommodations and signal timing.
Southlake would take the lead.

~\$3M

Excellence • Integrity • Service • Creativity • Communication

Shady Grove from Preston to Clay Hibbins

PROJECT SUMMARY

Shady Grove Road is used by both Keller and North Richland Hills residents to access the Davis and North Tarrant commercial areas. This project consists of reconstructing the existing 2-lane undivided roadway to provide wider lanes. The project also includes adding 6' sidewalk to both sides of the street, adding illumination and internal stormwater, and replacing existing water lines.

Project Length: 4,000 LF
Classification: Minor Collector
ADT: 5,000 vpd

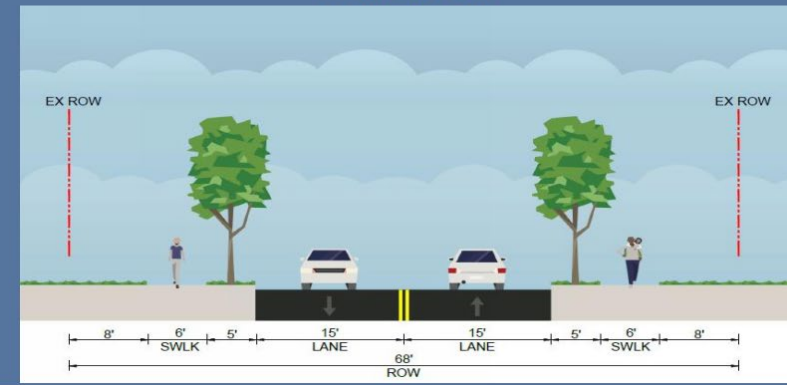
PROJECT COSTS

Category	Amount (\$)
Construction	\$ 4,340,000
ROW	\$ 231,000
Design	\$ 660,000
Contingency (25%)	\$ 1,090,000
Inflation (4%/year)	\$ 355,000
Subtotal (Eligible for Tarrant County 50% Match)	\$ 6,680,000

PROJECT LOCATION



TYPICAL SECTION



Convert a two-lane, bar ditch street to a two to three-lane roadway with curb & gutter and sidewalks. North Richland Hills would take the lead.

~0.75 miles in length

~\$6.7M

Next Steps

Mayor Letter of Support

Project Submission to Tarrant County

- Tarrant County will determine which projects to include in the bond package
- Bond package will be on the November 2021 ballot
- If approved, cities will have five years to deliver the projects



Questions?
Alonzo Liñán
817-743-4081

Excellence • Integrity • Service • Creativity • Communication